

# Product Datasheet

## CTLA-4 Antibody (CTLA4/6864R)

### NBP3-20446-100ug

Unit Size: 100 ug

Store at 4C. Do not freeze.

[www.novusbio.com](http://www.novusbio.com)



[technical@novusbio.com](mailto:technical@novusbio.com)

Protocols, Publications, Related Products, Reviews, Research Tools and Images at:  
[www.novusbio.com/NBP3-20446](http://www.novusbio.com/NBP3-20446)

Updated 4/2/2026 v.20.1

Earn rewards for product reviews and publications.

Submit a publication at [www.novusbio.com/publications](http://www.novusbio.com/publications)

Submit a review at [www.novusbio.com/reviews/destination/NBP3-20446](http://www.novusbio.com/reviews/destination/NBP3-20446)



**NBP3-20446-100ug**

CTLA-4 Antibody (CTLA4/6864R)

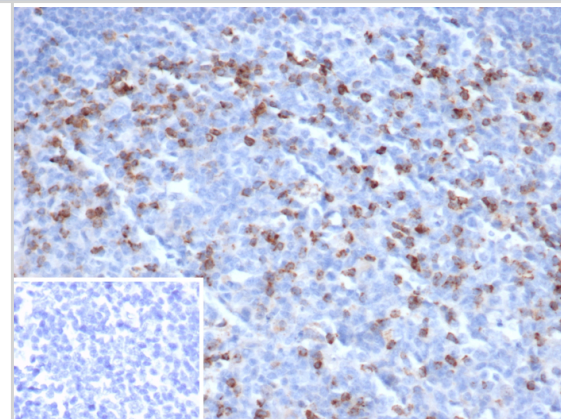
Product Information	
Unit Size	100 ug
Concentration	0.2 mg/ml
Storage	Store at 4C. Do not freeze.
Clonality	Monoclonal
Clone	CTLA4/6864R
Preservative	0.05% Sodium Azide
Isotype	IgG Kappa
Purity	Protein A or G purified
Buffer	10mM PBS with 0.05% BSA

Product Description	
Description	Positive Controls: Jurkat or Raji cells. Lymph node or tonsil.  Antibody with azide - store at 2 to 8C. Antibody without azide - store at -20 to -80C. Non-hazardous. No MSDS required.
Host	Rabbit
Gene ID	1493
Gene Symbol	CTLA4
Species	Human
Immunogen	Recombinant fragment of human CTLA-4 (exact sequence is proprietary)

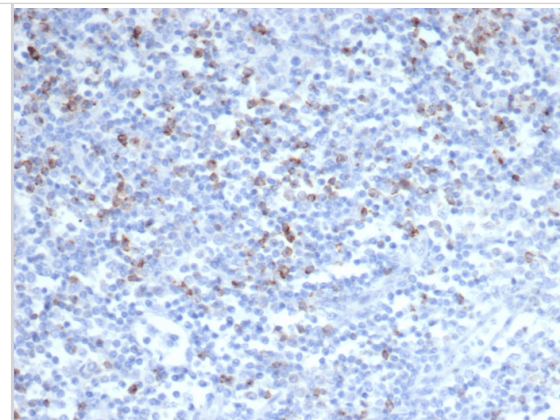
Product Application Details	
Applications	Immunohistochemistry-Paraffin, COMET
Recommended Dilutions	Immunohistochemistry-Paraffin 1-2 ug/ml, COMET
Application Notes	Immunohistochemistry (Formalin-fixed): 1-2ug/ml for 30 minutes. at RT. Staining of formalin-fixed tissues requires heating tissue sections in 10mM Tris with 1mM EDTA, pH 9.0, for 45 min at 95C followed by cooling at RT for 20 minutes.  Optimal dilution for a specific application should be determined.

**Images**

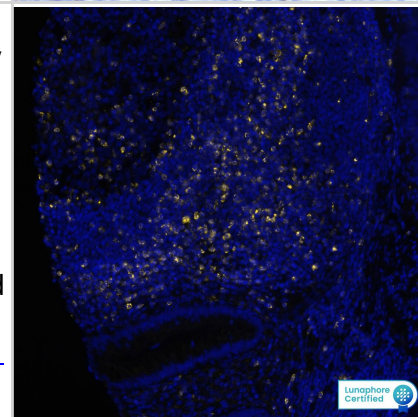
Formalin-fixed, paraffin-embedded human tonsil stained with CTLA-4 antibody (CTLA4/6864R). Inset: PBS instead of primary antibody; secondary only negative control.



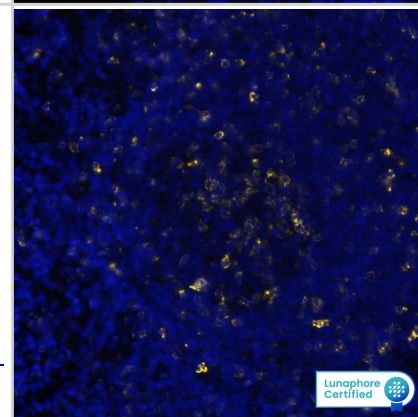
Formalin-fixed, paraffin-embedded human tonsil stained with CTLA-4 antibody (CTLA4/6864R). HIER: Tris/EDTA, pH9.0, 45min. Secondary: HRP-polymer, 30min. DAB, 5min



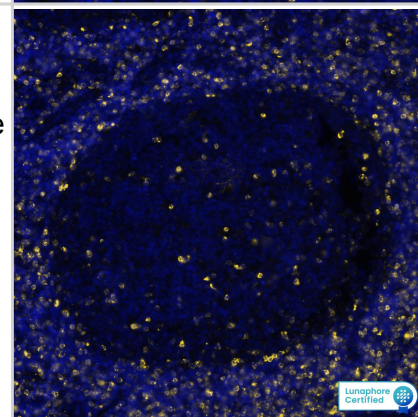
CTLA4 was detected in immersion fixed paraffin-embedded sections of human Appendix using Rabbit Anti-Human CTLA4, Monoclonal Antibody (Catalog # NBP3-20446 ) at 1:100 at 37° Celsius for 4 minutes. Before incubation with the primary antibody, tissue underwent an all-in-one dewaxing and antigen retrieval preprocessing using PreTreatment Module (PT Module)and Dewax and HIER Buffer H (pH 9; EpreDia Catalog #TA-999-DHBH). Tissue was stained using the Alexa Fluor™ Plus 647 Goat anti-Rabbit IgG Secondary Antibody at 1:200 at 37 ° Celsius for 2 minutes. (Yellow; Lunaphore Catalog # [DR647RB](#)) and counterstained with DAPI (blue; Lunaphore Catalog # [DR100](#)). Specific staining was localized to the membrane. Protocol available in [COMET™ Panel Builder](#).



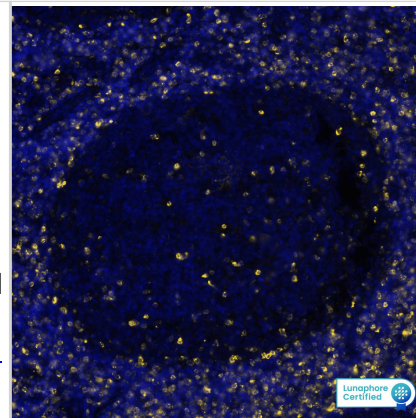
CTLA4 was detected in immersion fixed paraffin-embedded sections of human Tonsil using Rabbit Anti-Human CTLA4, Monoclonal Antibody (Catalog # NBP3-20446 ) at 1:100 at 37° Celsius for 4 minutes. Before incubation with the primary antibody, tissue underwent an all-in-one dewaxing and antigen retrieval preprocessing using PreTreatment Module (PT Module)and Dewax and HIER Buffer H (pH 9; EpreDia Catalog #TA-999-DHBH). Tissue was stained using the Alexa Fluor™ Plus 647 Goat anti-Rabbit IgG Secondary Antibody at 1:200 at 37 ° Celsius for 2 minutes. (Yellow; Lunaphore Catalog # [DR647RB](#)) and counterstained with DAPI (blue; Lunaphore Catalog # [DR100](#)). Specific staining was localized to the membrane. Protocol available in [COMET™ Panel Builder](#).



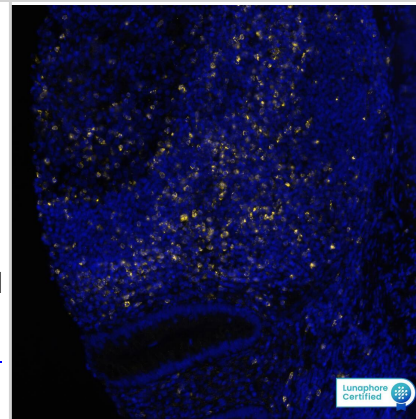
CTLA4 was detected in immersion fixed paraffin-embedded sections of human Hodgkin's Lymphoma using Rabbit Anti-Human CTLA4, Monoclonal Antibody (Catalog # NBP3-20446 ) at 1:100 at 37° Celsius for 4 minutes. Before incubation with the primary antibody, tissue underwent an all-in-one dewaxing and antigen retrieval preprocessing using PreTreatment Module (PT Module)and Dewax and HIER Buffer H (pH 9; EpreDia Catalog #TA-999-DHBH). Tissue was stained using the Alexa Fluor™ Plus 647 Goat anti-Rabbit IgG Secondary Antibody at 1:200 at 37 ° Celsius for 2 minutes. (Yellow; Lunaphore Catalog # [DR647RB](#)) and counterstained with DAPI (blue; Lunaphore Catalog # [DR100](#)). Specific staining was localized to the membrane. Protocol available in [COMET™ Panel Builder](#).



CTLA4 was detected in immersion fixed paraffin-embedded sections of human Lymph Node using Rabbit Anti-Human CTLA4, Monoclonal Antibody (Catalog # NBP3-20446 ) at 1:100 at 37° Celsius for 4 minutes. Before incubation with the primary antibody, tissue underwent an all-in-one dewaxing and antigen retrieval preprocessing using PreTreatment Module (PT Module)and Dewax and HIER Buffer H (pH 9; EpreDia Catalog #TA-999-DHBH). Tissue was stained using the Alexa Fluor™ Plus 647 Goat anti-Rabbit IgG Secondary Antibody at 1:200 at 37 ° Celsius for 2 minutes. (Yellow; Lunaphore Catalog # [DR647RB](#)) and counterstained with DAPI (blue; Lunaphore Catalog # [DR100](#)). Specific staining was localized to the membrane. Protocol available in [COMET™ Panel Builder](#).



CTLA4 was detected in immersion fixed paraffin-embedded sections of human Appendix using Rabbit Anti-Human CTLA4, Monoclonal Antibody (Catalog # NBP3-20446 ) at 1:100 at 37° Celsius for 4 minutes. Before incubation with the primary antibody, tissue underwent an all-in-one dewaxing and antigen retrieval preprocessing using PreTreatment Module (PT Module)and Dewax and HIER Buffer H (pH 9; EpreDia Catalog #TA-999-DHBH). Tissue was stained using the Alexa Fluor™ Plus 647 Goat anti-Rabbit IgG Secondary Antibody at 1:200 at 37 ° Celsius for 2 minutes. (Yellow; Lunaphore Catalog # [DR647RB](#)) and counterstained with DAPI (blue; Lunaphore Catalog # [DR100](#)). Specific staining was localized to the membrane. Protocol available in [COMET™ Panel Builder](#).





### **Novus Biologicals USA**

10730 E. Briarwood Avenue  
Centennial, CO 80112  
USA  
Phone: 303.730.1950  
Toll Free: 1.888.506.6887  
Fax: 303.730.1966  
nb-customerservice@bio-techne.com

### **Bio-Techne Canada**

21 Canmotor Ave  
Toronto, ON M8Z 4E6  
Canada  
Phone: 905.827.6400  
Toll Free: 855.668.8722  
Fax: 905.827.6402  
canada.inquires@bio-techne.com

### **Bio-Techne Ltd**

19 Barton Lane  
Abingdon Science Park  
Abingdon, OX14 3NB, United Kingdom  
Phone: (44) (0) 1235 529449  
Free Phone: 0800 37 34 15  
Fax: (44) (0) 1235 533420  
info.EMEA@bio-techne.com

### **General Contact Information**

www.novusbio.com  
Technical Support: nb-technical@bio-techne.com  
Orders: nb-customerservice@bio-techne.com  
General: novus@novusbio.com

### **Products Related to NBP3-20446-100ug**

---

HAF008	Goat anti-Rabbit IgG Secondary Antibody [HRP]
NB7160	Goat anti-Rabbit IgG (H+L) Secondary Antibody [HRP]
NBP2-22987	Recombinant Human CTLA-4 His Protein
210-TA-005	TNF-alpha [Unconjugated]

---

### **Limitations**

This product is for research use only and is not approved for use in humans or in clinical diagnosis. Primary Antibodies are guaranteed for 1 year from date of receipt.

For more information on our 100% guarantee, please visit [www.novusbio.com/guarantee](http://www.novusbio.com/guarantee)

Earn gift cards/discounts by submitting a review: [www.novusbio.com/reviews/submit/NBP3-20446](http://www.novusbio.com/reviews/submit/NBP3-20446)

Earn gift cards/discounts by submitting a publication using this product:  
[www.novusbio.com/publications](http://www.novusbio.com/publications)

