

Product Datasheet

LRP-1 Antibody (S09-4E8) - BSA Free NBP3-19934-100ul

Unit Size: 100 ul

Store at 4C short term. Aliquot and store at -20C long term. Avoid freeze-thaw cycles.

www.novusbio.com



technical@novusbio.com

Protocols, Publications, Related Products, Reviews, Research Tools and Images at:
www.novusbio.com/NBP3-19934

Updated 9/9/2025 v.20.1

Earn rewards for product
reviews and publications.

Submit a publication at www.novusbio.com/publications

Submit a review at www.novusbio.com/reviews/destination/NBP3-19934



NBP3-19934-100ul

LRP-1 Antibody (S09-4E8) - BSA Free

Product Information	
Unit Size	100 ul
Concentration	0.3 mg/ml
Storage	Store at 4C short term. Aliquot and store at -20C long term. Avoid freeze-thaw cycles.
Clonality	Monoclonal
Clone	S09-4E8
Preservative	0.02% Sodium Azide
Isotype	IgG
Purity	Affinity purified
Buffer	PBS (pH 7.4), 150mM NaCl, 50% glycerol
Target Molecular Weight	85 kDa

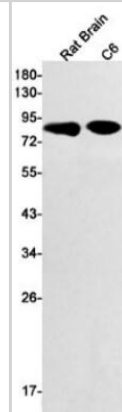
Product Description	
Description	Novus Biologicals Rabbit LRP-1 Antibody (S09-4E8) - BSA Free (NBP3-19934) is a recombinant monoclonal antibody validated for use in IHC, WB, Flow, ICC/IF and IP. All Novus Biologicals antibodies are covered by our 100% guarantee.
Host	Rabbit
Gene ID	4035
Gene Symbol	LRP1
Species	Human, Mouse, Rat
Immunogen	A synthetic peptide of human LRP-1 (Uniprot # Q07954)

Product Application Details	
Applications	Western Blot, Immunohistochemistry-Paraffin, Flow Cytometry, Immunocytochemistry/ Immunofluorescence, Immunohistochemistry, Immunoprecipitation
Recommended Dilutions	Western Blot 1:10000-1:20000, Flow Cytometry 1:50, Immunohistochemistry 1:50-1:100, Immunocytochemistry/ Immunofluorescence 1:50-1:100, Immunoprecipitation 1:30, Immunohistochemistry-Paraffin

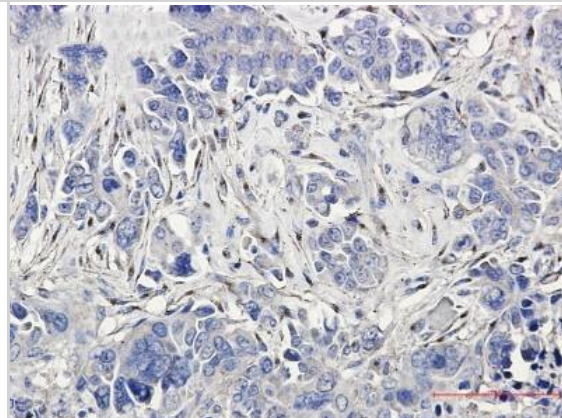


Images

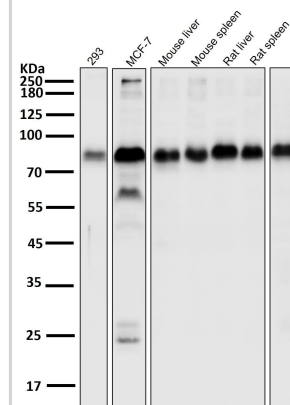
Western Blot: LRP-1 Antibody (S09-4E8) [NBP3-19934] - Western blot detection of LRP-1 in Rat Brain, C6 cell lysates using NBP3-19934 (1:1000 diluted). Predicted band size: 85kDa. Observed band size: 85kDa.



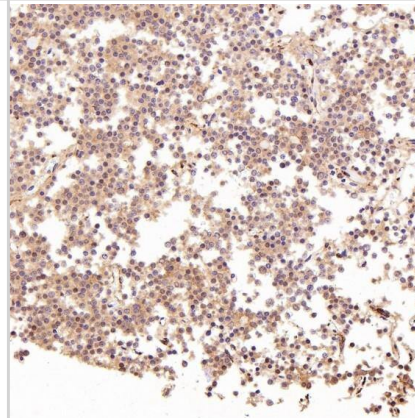
Immunohistochemistry-Paraffin: LRP-1 Antibody (S09-4E8) [NBP3-19934] - Immunohistochemistry of LRP-1 in paraffin-embedded Human Cholangiocarcinoma using NBP3-19934 at dilution 1/20



Western Blot: LRP-1 Antibody (S09-4E8) [NBP3-19934] - All lanes use NBP3-19934 at 1:3W dilution for 1 hour at room temperature.



Immunohistochemistry-Paraffin: LRP-1 Antibody (S09-4E8) [NBP3-19934] - Immunohistochemical analysis of paraffin-embedded Human pituitary tumor, using NBP3-19934.





Novus Biologicals USA

10730 E. Briarwood Avenue
Centennial, CO 80112
USA
Phone: 303.730.1950
Toll Free: 1.888.506.6887
Fax: 303.730.1966
nb-customerservice@bio-techne.com

Bio-Techne Canada

21 Canmotor Ave
Toronto, ON M8Z 4E6
Canada
Phone: 905.827.6400
Toll Free: 855.668.8722
Fax: 905.827.6402
canada.inquires@bio-techne.com

Bio-Techne Ltd

19 Barton Lane
Abingdon Science Park
Abingdon, OX14 3NB, United Kingdom
Phone: (44) (0) 1235 529449
Free Phone: 0800 37 34 15
Fax: (44) (0) 1235 533420
info.EMEA@bio-techne.com

General Contact Information

www.novusbio.com
Technical Support: nb-technical@bio-techne.com
Orders: nb-customerservice@bio-techne.com
General: novus@novusbio.com

Products Related to NBP3-19934-100ul

NBP2-33376H	Blue Marker Antibody (6F4-F6) [HRP]
HAF008	Goat anti-Rabbit IgG Secondary Antibody [HRP]
NB7160	Goat anti-Rabbit IgG (H+L) Secondary Antibody [HRP]
NBP2-24891	Rabbit IgG Isotype Control

Limitations

This product is for research use only and is not approved for use in humans or in clinical diagnosis. Primary Antibodies are guaranteed for 1 year from date of receipt.

For more information on our 100% guarantee, please visit www.novusbio.com/guarantee

Earn gift cards/discounts by submitting a review: www.novusbio.com/reviews/submit/NBP3-19934

Earn gift cards/discounts by submitting a publication using this product:
www.novusbio.com/publications

