

# Product Datasheet

## Casein Kinase 2 alpha Antibody (S05-7F8) NBP3-19853-100ul

Unit Size: 100 ul

Store at 4C short term. Aliquot and store at -20C long term. Avoid freeze-thaw cycles.

[www.novusbio.com](http://www.novusbio.com)



[technical@novusbio.com](mailto:technical@novusbio.com)

Protocols, Publications, Related Products, Reviews, Research Tools and Images at:  
[www.novusbio.com/NBP3-19853](http://www.novusbio.com/NBP3-19853)

Updated 9/9/2025 v.20.1

Earn rewards for product  
reviews and publications.

Submit a publication at [www.novusbio.com/publications](http://www.novusbio.com/publications)

Submit a review at [www.novusbio.com/reviews/destination/NBP3-19853](http://www.novusbio.com/reviews/destination/NBP3-19853)



**NBP3-19853-100ul**

Casein Kinase 2 alpha Antibody (S05-7F8)

Product Information	
Unit Size	100 ul
Concentration	0.3 mg/ml
Storage	Store at 4C short term. Aliquot and store at -20C long term. Avoid freeze-thaw cycles.
Clonality	Monoclonal
Clone	S05-7F8
Preservative	0.01% Sodium Azide
Isotype	IgG
Purity	Affinity purified
Buffer	50mM Tris-Glycine(pH 7.4), 0.15M NaCl, 40% Glycerol, 0.05% BSA
Target Molecular Weight	45 kDa

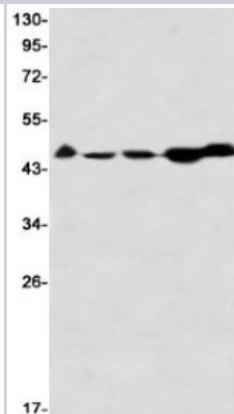
Product Description	
Description	Novus Biologicals Rabbit Casein Kinase 2 alpha Antibody (S05-7F8) (NBP3-19853) is a recombinant monoclonal antibody validated for use in WB. All Novus Biologicals antibodies are covered by our 100% guarantee.
Host	Rabbit
Gene ID	1457
Gene Symbol	CSNK2A1
Species	Human, Mouse, Rat
Immunogen	A synthetic peptide of human Casein Kinase 2 alpha (Uniprot # P68400)

Product Application Details	
Applications	Western Blot
Recommended Dilutions	Western Blot 1/1000

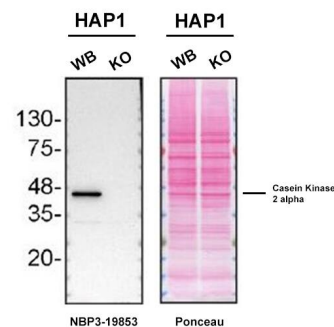


## Images

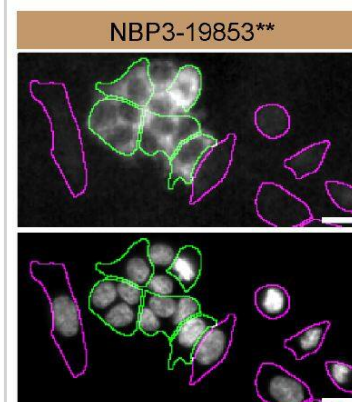
Western Blot: Casein Kinase 2 alpha Antibody (S05-7F8) [NBP3-19853]  
- Western blot detection of Casein Kinase 2 alpha in Hela (Lane 1), CHO-K1 (Lane 2), C6 (Lane 3), mouse Brain (Lane 4), Ramos (Lane 5) using NBP3-19853 (1:1000 diluted)



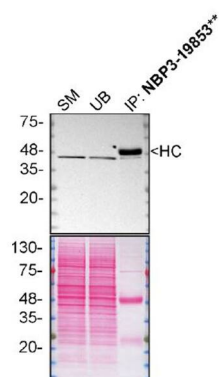
Western blot shows lysates of HAP1 human near-haploid cell line and Casein Kinase 2 alpha knockout HAP1 cell line (KO). Nitrocellulose membrane was probed with Casein Kinase 2 alpha Antibody (Catalog # NBP3-19853) O/N at 4C, followed by HRP-conjugated Secondary Antibody and ECL detection. A specific band was detected for Casein Kinase 2 alpha (as indicated) in the parental HAP1 cell line, but is not detectable in knockout HAP1 cell line. The Ponceau stained transfer of the blot is shown. Image, protocol and testing courtesy of YCharOS Inc. (ycharos.com).



HAP1 WT and Casein Kinase 2 alpha KO cells were labelled with a green or a far-red fluorescent dye, respectively. Cells were stained with Casein Kinase 2 alpha antibody and with the corresponding Alexa-fluor 555 coupled secondary antibody including DAPI. Acquisition of the blue (nucleus-DAPI), green (identification of WT cells), red (antibody staining) and far-red (identification of KO cells) channels was performed. Representative images of the blue and red (grayscale) channels are shown. WT and KO cells are outlined with green and magenta dashed line, respectively. Antibody dilution used: 1/300. Image, protocol and testing courtesy of YCharOS Inc. (ycharos.com).



HAP1 lysates were prepared, and immunoprecipitation was performed using 2.0 ug of Casein Kinase 2 alpha antibody (Catalog # NBP3-19853) pre-coupled to Dynabeads protein A. Samples were washed and processed for Western Blot with Casein Kinase 2 alpha antibody. For Western Blot, Rb x Casein Kinase 2 alpha was used at 1/10. The Ponceau stained transfers of each blot are shown. SM=4% starting material; UB=4% unbound fraction; IP=immunoprecipitate. Image, protocol and testing courtesy of YCharOS Inc. (ycharos.com).





### **Novus Biologicals USA**

10730 E. Briarwood Avenue  
Centennial, CO 80112  
USA  
Phone: 303.730.1950  
Toll Free: 1.888.506.6887  
Fax: 303.730.1966  
nb-customerservice@bio-techne.com

### **Bio-Techne Canada**

21 Canmotor Ave  
Toronto, ON M8Z 4E6  
Canada  
Phone: 905.827.6400  
Toll Free: 855.668.8722  
Fax: 905.827.6402  
canada.inquires@bio-techne.com

### **Bio-Techne Ltd**

19 Barton Lane  
Abingdon Science Park  
Abingdon, OX14 3NB, United Kingdom  
Phone: (44) (0) 1235 529449  
Free Phone: 0800 37 34 15  
Fax: (44) (0) 1235 533420  
info.EMEA@bio-techne.com

### **General Contact Information**

www.novusbio.com  
Technical Support: nb-technical@bio-techne.com  
Orders: nb-customerservice@bio-techne.com  
General: novus@novusbio.com

### **Products Related to NBP3-19853-100ul**

---

NBP2-33376H	Blue Marker Antibody (6F4-F6) [HRP]
HAF008	Goat anti-Rabbit IgG Secondary Antibody [HRP]
NB7160	Goat anti-Rabbit IgG (H+L) Secondary Antibody [HRP]
NBP2-24891	Rabbit IgG Isotype Control

---

### **Limitations**

This product is for research use only and is not approved for use in humans or in clinical diagnosis. Primary Antibodies are guaranteed for 1 year from date of receipt.

For more information on our 100% guarantee, please visit [www.novusbio.com/guarantee](http://www.novusbio.com/guarantee)

Earn gift cards/discounts by submitting a review: [www.novusbio.com/reviews/submit/NBP3-19853](http://www.novusbio.com/reviews/submit/NBP3-19853)

Earn gift cards/discounts by submitting a publication using this product:  
[www.novusbio.com/publications](http://www.novusbio.com/publications)

