

Product Datasheet

MCAM/CD146 Antibody (S05-5A2) - BSA Free NBP3-19541-100ul

Unit Size: 100 ul

Store at 4C short term. Aliquot and store at -20C long term. Avoid freeze-thaw cycles.

www.novusbio.com



technical@novusbio.com

Protocols, Publications, Related Products, Reviews, Research Tools and Images at:
www.novusbio.com/NBP3-19541

Updated 9/9/2025 v.20.1

Earn rewards for product
reviews and publications.

Submit a publication at www.novusbio.com/publications

Submit a review at www.novusbio.com/reviews/destination/NBP3-19541



NBP3-19541-100ul

MCAM/CD146 Antibody (S05-5A2) - BSA Free

| Product Information | |
|--------------------------------|--|
| Unit Size | 100 ul |
| Concentration | 0.3 mg/ml |
| Storage | Store at 4C short term. Aliquot and store at -20C long term. Avoid freeze-thaw cycles. |
| Clonality | Monoclonal |
| Clone | S05-5A2 |
| Preservative | 0.02% Sodium Azide |
| Isotype | IgG |
| Purity | Affinity purified |
| Buffer | PBS (pH 7.4), 150mM NaCl, 50% glycerol |
| Target Molecular Weight | 72 kDa |

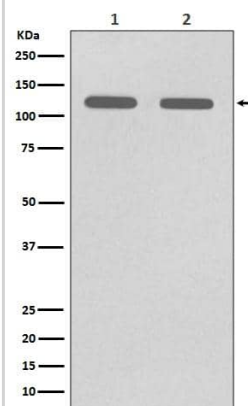
| Product Description | |
|---------------------|--|
| Description | Novus Biologicals Rabbit MCAM/CD146 Antibody (S05-5A2) - BSA Free (NBP3-19541) is a recombinant monoclonal antibody validated for use in IHC, WB, Flow, ICC/IF and IP. All Novus Biologicals antibodies are covered by our 100% guarantee. |
| Host | Rabbit |
| Gene ID | 4162 |
| Gene Symbol | MCAM |
| Species | Human, Mouse, Rat |
| Immunogen | A synthetic peptide of human MCAM/CD146 (Uniprot # P43121) |

| Product Application Details | |
|------------------------------|--|
| Applications | Western Blot, Immunohistochemistry-Paraffin, Flow Cytometry, Immunocytochemistry/ Immunofluorescence, Immunohistochemistry, Immunoprecipitation |
| Recommended Dilutions | Western Blot 1:500-1:2000, Flow Cytometry 1:50, Immunohistochemistry 1:50-1:200, Immunocytochemistry/ Immunofluorescence 1:50-1:200, Immunoprecipitation 1:50, Immunohistochemistry-Paraffin |

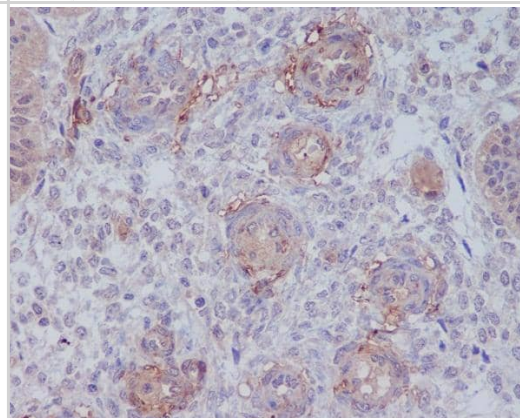


Images

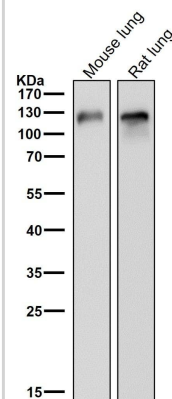
Western Blot: MCAM/CD146 Antibody (S05-5A2) [NBP3-19541] - Western blot analysis of MCAM/CD146 expression in (1) A375 cell lysate; (2) HUVEC cell lysate



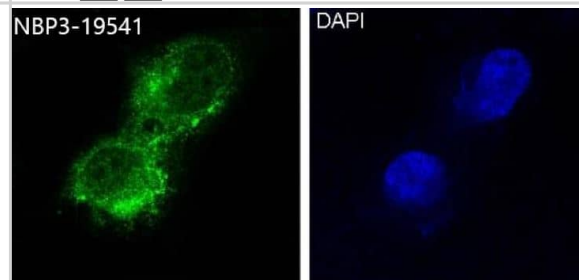
Immunohistochemistry-Paraffin: MCAM/NBP3-19541 (S05-5A2) [NBP3-19541] - Immunohistochemical analysis of paraffin-embedded human uterus, using NBP3-19541.



Western Blot: MCAM/CD146 Antibody (S05-5A2) [NBP3-19541] - All lanes use NBP3-19541 at 1:5000 dilution for 1 hour at room temperature.



Immunocytochemistry/ Immunofluorescence: MCAM/CD146 Antibody (S05-5A2) [NBP3-19541] - Immunofluorescent analysis of A375 cells, using NBP3-19541.





Novus Biologicals USA

10730 E. Briarwood Avenue
Centennial, CO 80112
USA
Phone: 303.730.1950
Toll Free: 1.888.506.6887
Fax: 303.730.1966
nb-customerservice@bio-techne.com

Bio-Techne Canada

21 Canmotor Ave
Toronto, ON M8Z 4E6
Canada
Phone: 905.827.6400
Toll Free: 855.668.8722
Fax: 905.827.6402
canada.inquires@bio-techne.com

Bio-Techne Ltd

19 Barton Lane
Abingdon Science Park
Abingdon, OX14 3NB, United Kingdom
Phone: (44) (0) 1235 529449
Free Phone: 0800 37 34 15
Fax: (44) (0) 1235 533420
info.EMEA@bio-techne.com

General Contact Information

www.novusbio.com
Technical Support: nb-technical@bio-techne.com
Orders: nb-customerservice@bio-techne.com
General: novus@novusbio.com

Products Related to NBP3-19541-100ul

| | |
|-------------|---|
| NBP2-33376H | Blue Marker Antibody (6F4-F6) [HRP] |
| HAF008 | Goat anti-Rabbit IgG Secondary Antibody [HRP] |
| NB7160 | Goat anti-Rabbit IgG (H+L) Secondary Antibody [HRP] |
| NBP2-24891 | Rabbit IgG Isotype Control |

Limitations

This product is for research use only and is not approved for use in humans or in clinical diagnosis. Primary Antibodies are guaranteed for 1 year from date of receipt.

For more information on our 100% guarantee, please visit www.novusbio.com/guarantee

Earn gift cards/discounts by submitting a review: www.novusbio.com/reviews/submit/NBP3-19541

Earn gift cards/discounts by submitting a publication using this product:
www.novusbio.com/publications

