

Product Datasheet

cAMP Antibody (RM466) NBP3-18822

Unit Size: 50 ug

Store at -20C.

www.novusbio.com



technical@novusbio.com

Protocols, Publications, Related Products, Reviews, Research Tools and Images at:
www.novusbio.com/NBP3-18822

Updated 9/9/2025 v.20.1

Earn rewards for product
reviews and publications.

Submit a publication at www.novusbio.com/publications

Submit a review at www.novusbio.com/reviews/destination/NBP3-18822



NBP3-18822

cAMP Antibody (RM466)

Product Information	
Unit Size	50 ug
Concentration	1 mg/ml
Storage	Store at -20C.
Clonality	Monoclonal
Clone	RM466
Preservative	0.09% Sodium Azide
Isotype	IgG
Purity	Protein A purified
Buffer	50% Glycerol/PBS, 1% BSA

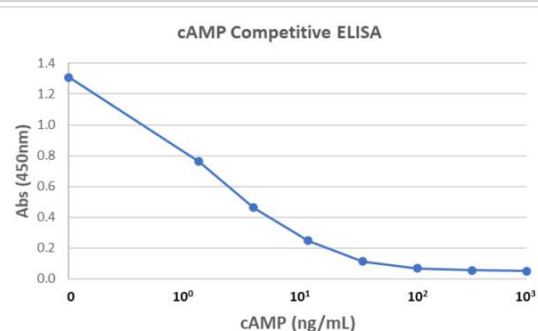
Product Description	
Description	Novus Biologicals Rabbit cAMP Antibody (RM466) (NBP3-18822) is a recombinant monoclonal antibody validated for use in ELISA. All Novus Biologicals antibodies are covered by our 100% guarantee.
Host	Rabbit
Species	Non-species specific
Specificity/Sensitivity	This antibody reacts to cAMP. No cross reactivity with other cyclic nucleotide or nucleoside phosphate.
Immunogen	KLH-conjugated cAMP

Product Application Details	
Applications	ELISA
Recommended Dilutions	ELISA 0.05 - 0.5 ug/mL

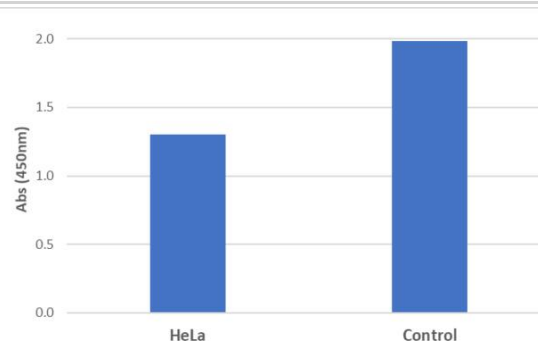


Images

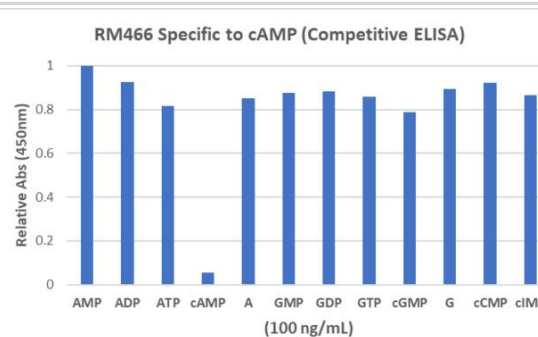
ELISA: cAMP Antibody (RM466)[NBP3-18822]Competitive ELISA of cAMP using anti-cAMP (RM466). The 96-well plate was coated with 1 ug/mL of Goat anti-rabbit IgG (50 μ l/well). 0.05 μ g/ml of anti-cAMP (RM466) (50 μ l/well) was added and incubated. After wash and block, different concentrations of cAMP (25 μ l/well) were added along with 25 μ l/well of 1/5,000 diluted HRP conjugated cAMP. (71-1358-00) TMB was used to develop the color after incubation and wash.



ELISA: cAMP Antibody (RM466) [NBP3-18822] - Competitive ELISA detecting cAMP in HeLa cells. The 96-well plate was coated with 1 ug/mL of Goat anti-rabbit IgG (50 μ l/well). 0.05 μ g/ml of RM466 (50 μ l/well) was added and incubated. After wash and block, HeLa cell lysate (~105cell/mL) or control (lysate buffer only) (25 μ l/well) were added along with 25 μ l/well of 1/5,000 diluted HRP conjugated cAMP. TMB was used to develop the color after incubation and wash.



ELISA: cAMP Antibody (RM466) [NBP3-18822] - Competitive ELISA showing the specificity of RM466. The 96-well plate was coated with 1 ug/mL of Goat anti-rabbit IgG (50 μ l/well). 0.05 μ g/ml of RM466 (50 μ l/well) was added and incubated. After wash and block, cAMP and other cyclic nucleotides or nucleoside phosphates (25 μ l/well) were added along with 25 μ l/well of 1/5,000 diluted HRP conjugated cAMP (71-1358-00). TMB was used to develop the color after incubation and wash.





Novus Biologicals USA

10730 E. Briarwood Avenue
Centennial, CO 80112
USA
Phone: 303.730.1950
Toll Free: 1.888.506.6887
Fax: 303.730.1966
nb-customerservice@bio-techne.com

Bio-Techne Canada

21 Canmotor Ave
Toronto, ON M8Z 4E6
Canada
Phone: 905.827.6400
Toll Free: 855.668.8722
Fax: 905.827.6402
canada.inquires@bio-techne.com

Bio-Techne Ltd

19 Barton Lane
Abingdon Science Park
Abingdon, OX14 3NB, United Kingdom
Phone: (44) (0) 1235 529449
Free Phone: 0800 37 34 15
Fax: (44) (0) 1235 533420
info.EMEA@bio-techne.com

General Contact Information

www.novusbio.com
Technical Support: nb-technical@bio-techne.com
Orders: nb-customerservice@bio-techne.com
General: novus@novusbio.com

Products Related to NBP3-18822

HAF008	Goat anti-Rabbit IgG Secondary Antibody [HRP]
NB7160	Goat anti-Rabbit IgG (H+L) Secondary Antibody [HRP]
NBP2-24891	Rabbit IgG Isotype Control
KGE002B	cAMP [Biotin]

Limitations

This product is for research use only and is not approved for use in humans or in clinical diagnosis. Primary Antibodies are guaranteed for 1 year from date of receipt.

For more information on our 100% guarantee, please visit www.novusbio.com/guarantee

Earn gift cards/discounts by submitting a review: www.novusbio.com/reviews/submit/NBP3-18822

Earn gift cards/discounts by submitting a publication using this product:
www.novusbio.com/publications

