

# Product Datasheet

## Lysine (K)-specific Demethylase 4A/KDM4A/JMJD2A Antibody - BSA Free NBP3-18688-50ug

Unit Size: 50 ug

Store at -20C short term. Aliquot and store at -80C long term. Avoid freeze-thaw cycles.

[www.novusbio.com](http://www.novusbio.com)



[technical@novusbio.com](mailto:technical@novusbio.com)

Protocols, Publications, Related Products, Reviews, Research Tools and Images at:  
[www.novusbio.com/NBP3-18688](http://www.novusbio.com/NBP3-18688)

Updated 9/9/2025 v.20.1

Earn rewards for product  
reviews and publications.

Submit a publication at [www.novusbio.com/publications](http://www.novusbio.com/publications)

Submit a review at [www.novusbio.com/reviews/destination/NBP3-18688](http://www.novusbio.com/reviews/destination/NBP3-18688)



**NBP3-18688-50ug**

Lysine (K)-specific Demethylase 4A/KDM4A/JMJD2A Antibody - BSA Free

<b>Product Information</b>	
<b>Unit Size</b>	50 ug
<b>Concentration</b>	0.66 mg/ml
<b>Storage</b>	Store at -20C short term. Aliquot and store at -80C long term. Avoid freeze-thaw cycles.
<b>Clonality</b>	Polyclonal
<b>Preservative</b>	0.05% Sodium Azide and 0.05% ProClin 300
<b>Purity</b>	Affinity purified
<b>Buffer</b>	PBS

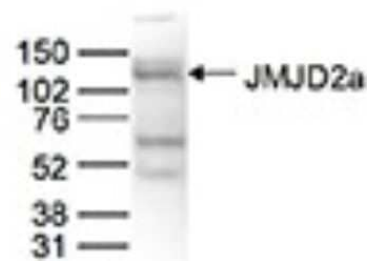
<b>Product Description</b>	
<b>Description</b>	Novus Biologicals Rabbit Lysine (K)-specific Demethylase 4A/KDM4A/JMJD2A Antibody - BSA Free (NBP3-18688) is a polyclonal antibody validated for use in IHC, WB, ELISA and ICC/IF. All Novus Biologicals antibodies are covered by our 100% guarantee.
<b>Host</b>	Rabbit
<b>Gene ID</b>	9682
<b>Gene Symbol</b>	KDM4A
<b>Species</b>	Human
<b>Immunogen</b>	Polyclonal antibody raised in rabbit against human Lysine (K)-specific Demethylase 4A/KDM4A/JMJD2A (Jumonji domain containing 2a), using a KLH-conjugated synthetic peptide containing a sequence from the central part of the protein.

<b>Product Application Details</b>	
<b>Applications</b>	Western Blot, Immunohistochemistry-Paraffin, ELISA, Immunocytochemistry/Immunofluorescence, Immunohistochemistry
<b>Recommended Dilutions</b>	Western Blot 1:500, ELISA 1:100-1:500, Immunohistochemistry 1:50 - 1:200, Immunocytochemistry/ Immunofluorescence 0.25-2 ug/ml, Immunohistochemistry-Paraffin 1:50-1:200

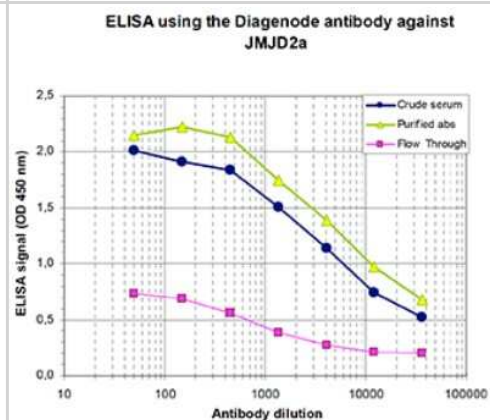


## Images

Western Blot: Lysine (K)-specific Demethylase 4A/KDM4A/JMJD2A Antibody [NBP3-18688] - Figure 2. Western blot analysis using the antibody directed against Lysine (K)-specific Demethylase 4A/KDM4A/JMJD2A Nuclear extracts from HeLa cells (40 ug) were analysed by Western blot using the antibody against Lysine (K)-specific Demethylase 4A/KDM4A/JMJD2A diluted 1:500 in TBS-Tween containing 5% skimmed milk. The position of the protein of interest is indicated on the right (expected size 121 kDa); the marker (in kDa) is shown on the left.



ELISA: Lysine (K)-specific Demethylase 4A/KDM4A/JMJD2A Antibody [NBP3-18688] - Figure 1. Determination of the antibody titer To determine the titer of the antibody, an ELISA was performed using a serial dilution of the antibody directed against human Lysine (K)-specific Demethylase 4A/KDM4A/JMJD2A, crude serum and flow through. The plates were coated with the peptide used for immunization of the rabbit. By plotting the absorbance against the antibody dilution (Figure 1), the titer of the antibody was estimated to be 1:9,000.





### **Novus Biologicals USA**

10730 E. Briarwood Avenue  
Centennial, CO 80112  
USA  
Phone: 303.730.1950  
Toll Free: 1.888.506.6887  
Fax: 303.730.1966  
nb-customerservice@bio-techne.com

### **Bio-Techne Canada**

21 Canmotor Ave  
Toronto, ON M8Z 4E6  
Canada  
Phone: 905.827.6400  
Toll Free: 855.668.8722  
Fax: 905.827.6402  
canada.inquires@bio-techne.com

### **Bio-Techne Ltd**

19 Barton Lane  
Abingdon Science Park  
Abingdon, OX14 3NB, United Kingdom  
Phone: (44) (0) 1235 529449  
Free Phone: 0800 37 34 15  
Fax: (44) (0) 1235 533420  
info.EMEA@bio-techne.com

### **General Contact Information**

www.novusbio.com  
Technical Support: nb-technical@bio-techne.com  
Orders: nb-customerservice@bio-techne.com  
General: novus@novusbio.com

### **Products Related to NBP3-18688-50ug**

---

NBP2-33376H	Blue Marker Antibody (6F4-F6) [HRP]
HAF008	Goat anti-Rabbit IgG Secondary Antibody [HRP]
NB7160	Goat anti-Rabbit IgG (H+L) Secondary Antibody [HRP]
NBP1-87855PEP	Lysine (K)-specific Demethylase 4A/KDM4A/JMJD2A Recombinant Protein Antigen

---

### **Limitations**

This product is for research use only and is not approved for use in humans or in clinical diagnosis. Primary Antibodies are guaranteed for 1 year from date of receipt.

For more information on our 100% guarantee, please visit [www.novusbio.com/guarantee](http://www.novusbio.com/guarantee)

Earn gift cards/discounts by submitting a review: [www.novusbio.com/reviews/submit/NBP3-18688](http://www.novusbio.com/reviews/submit/NBP3-18688)

Earn gift cards/discounts by submitting a publication using this product:  
[www.novusbio.com/publications](http://www.novusbio.com/publications)

