

Product Datasheet

PML Protein Antibody - BSA Free NBP3-18686-50ug

Unit Size: 50 ug

Store at -20C short term. Aliquot and store at -80C long term. Avoid freeze-thaw cycles.

www.novusbio.com



technical@novusbio.com

Protocols, Publications, Related Products, Reviews, Research Tools and Images at:
www.novusbio.com/NBP3-18686

Updated 9/9/2025 v.20.1

Earn rewards for product
reviews and publications.

Submit a publication at www.novusbio.com/publications

Submit a review at www.novusbio.com/reviews/destination/NBP3-18686



NBP3-18686-50ug

PML Protein Antibody - BSA Free

Product Information	
Unit Size	50 ug
Concentration	0.14 mg/ml
Storage	Store at -20C short term. Aliquot and store at -80C long term. Avoid freeze-thaw cycles.
Clonality	Polyclonal
Preservative	0.05% Sodium Azide and 0.05% ProClin 300
Purity	Affinity purified
Buffer	PBS

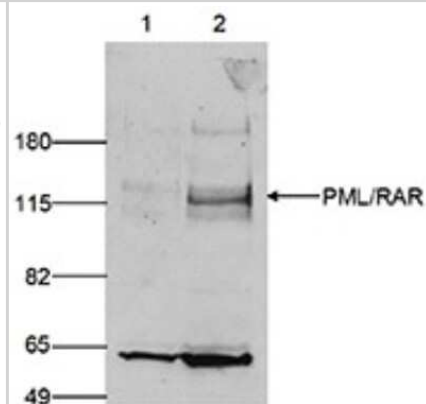
Product Description	
Description	Novus Biologicals Rabbit PML Protein Antibody - BSA Free (NBP3-18686) is a polyclonal antibody validated for use in IHC, WB and ELISA. All Novus Biologicals antibodies are covered by our 100% guarantee.
Host	Rabbit
Gene ID	5371
Gene Symbol	PML
Species	Human
Immunogen	Polyclonal antibody raised in rabbit against human PML Protein (Promyelocytic leukemia), using 3 different KLH-conjugated synthetic peptides.

Product Application Details	
Applications	Western Blot, Immunohistochemistry-Paraffin, ELISA, Immunohistochemistry
Recommended Dilutions	Western Blot 1:750, ELISA 1:100-1:200, Immunohistochemistry 1:50 - 1:200, Immunohistochemistry-Paraffin 1:50-1:200

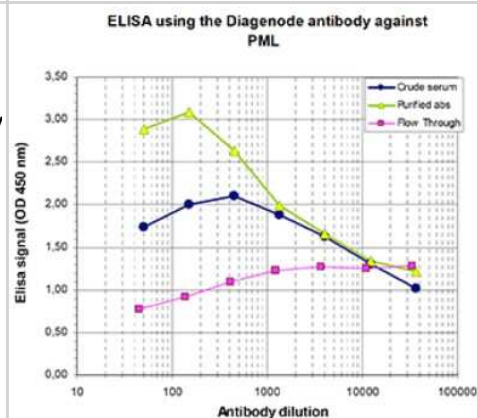


Images

Western Blot: PML Protein Antibody [NBP3-18686] - Figure 2. Western blot analysis using the antibody directed against PML Protein Human embryonic kidney cells (293T) were transfected with an ER-tagged PML Protein/RAR fusion protein. Nuclear extracts (50 ug) from control (lane 1) and from transfected cells (lane 2) were analysed by Western blot using the antibody against PML Protein. The antibody was diluted 1:750 in TBS-Tween containing 5% milk powder. The position of the PML Protein/RAR fusion protein is indicated on the right; the marker (in kDa) is shown on the left. The smaller band of approximately 60 kDa might represent the endogenous PML Protein protein.



ELISA: PML Protein Antibody [NBP3-18686] - Figure 1. Determination of the antibody titer To determine the titer of the antibody, an ELISA was performed using a serial dilution of the antibody directed against human PML Protein, crude serum and Flow Through in antigen coated wells. By plotting the absorbance against the antibody dilution (Figure 1), the titer of the antibody was estimated to be 1:6,000.





Novus Biologicals USA

10730 E. Briarwood Avenue
Centennial, CO 80112
USA
Phone: 303.730.1950
Toll Free: 1.888.506.6887
Fax: 303.730.1966
nb-customerservice@bio-techne.com

Bio-Techne Canada

21 Canmotor Ave
Toronto, ON M8Z 4E6
Canada
Phone: 905.827.6400
Toll Free: 855.668.8722
Fax: 905.827.6402
canada.inquires@bio-techne.com

Bio-Techne Ltd

19 Barton Lane
Abingdon Science Park
Abingdon, OX14 3NB, United Kingdom
Phone: (44) (0) 1235 529449
Free Phone: 0800 37 34 15
Fax: (44) (0) 1235 533420
info.EMEA@bio-techne.com

General Contact Information

www.novusbio.com
Technical Support: nb-technical@bio-techne.com
Orders: nb-customerservice@bio-techne.com
General: novus@novusbio.com

Products Related to NBP3-18686-50ug

NBP2-33376H	Blue Marker Antibody (6F4-F6) [HRP]
HAF008	Goat anti-Rabbit IgG Secondary Antibody [HRP]
NB7160	Goat anti-Rabbit IgG (H+L) Secondary Antibody [HRP]
NB100-59787PEP	PML Protein Antibody Blocking Peptide

Limitations

This product is for research use only and is not approved for use in humans or in clinical diagnosis. Primary Antibodies are guaranteed for 1 year from date of receipt.

For more information on our 100% guarantee, please visit www.novusbio.com/guarantee

Earn gift cards/discounts by submitting a review: www.novusbio.com/reviews/submit/NBP3-18686

Earn gift cards/discounts by submitting a publication using this product:
www.novusbio.com/publications

