

# Product Datasheet

## Lysine (K)-specific Demethylase 5B/KDM5B/JARID1B Antibody NBP3-18678-100ul

Unit Size: 100 ul

Store at -20C short term. Aliquot and store at -80C long term. Avoid freeze-thaw cycles.

[www.novusbio.com](http://www.novusbio.com)



[technical@novusbio.com](mailto:technical@novusbio.com)

Protocols, Publications, Related Products, Reviews, Research Tools and Images at:  
[www.novusbio.com/NBP3-18678](http://www.novusbio.com/NBP3-18678)

Updated 9/9/2025 v.20.1

Earn rewards for product  
reviews and publications.

Submit a publication at [www.novusbio.com/publications](http://www.novusbio.com/publications)

Submit a review at [www.novusbio.com/reviews/destination/NBP3-18678](http://www.novusbio.com/reviews/destination/NBP3-18678)



**NBP3-18678-100ul****Lysine (K)-specific Demethylase 5B/KDM5B/JARID1B Antibody**

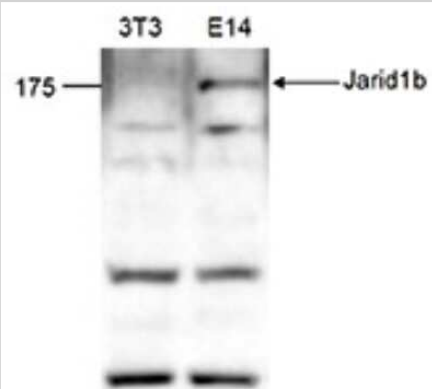
<b>Product Information</b>	
<b>Unit Size</b>	100 ul
<b>Concentration</b>	Please see the vial label for concentration. If unlisted please contact technical services.
<b>Storage</b>	Store at -20C short term. Aliquot and store at -80C long term. Avoid freeze-thaw cycles.
<b>Clonality</b>	Polyclonal
<b>Preservative</b>	0.05% Sodium Azide
<b>Purity</b>	Whole Antiserum
<b>Buffer</b>	Whole antiserum

<b>Product Description</b>	
<b>Description</b>	Novus Biologicals Rabbit Lysine (K)-specific Demethylase 5B/KDM5B/JARID1B Antibody (NBP3-18678) is a polyclonal antibody validated for use in WB and ELISA. All Novus Biologicals antibodies are covered by our 100% guarantee.
<b>Host</b>	Rabbit
<b>Gene ID</b>	10765
<b>Gene Symbol</b>	KDM5B
<b>Species</b>	Mouse
<b>Immunogen</b>	Polyclonal antibody raised in rabbit against mouse Lysine (K)-specific Demethylase 5B/KDM5B/JARID1B (Jumonji, AT rich interactive domain 1B), using a KLH-conjugated synthetic peptides containing an amino acid sequence from the central part of the protein (1).

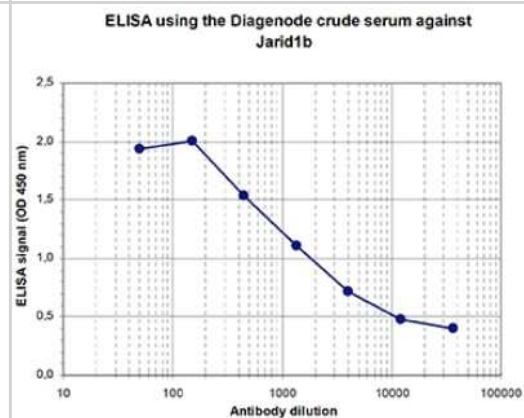
<b>Product Application Details</b>	
<b>Applications</b>	Western Blot, ELISA
<b>Recommended Dilutions</b>	Western Blot 1:500, ELISA 1:100-1:200

## Images

Western Blot: Lysine (K)-specific Demethylase 5B/KDM5B/JARID1B Antibody [NBP3-18678] - Figure 2. Western blot analysis using the antibody directed against Lysine (K)-specific Demethylase 5B/KDM5B/JARID1B (1) Western blot was performed on whole cell lysates from mouse fibroblasts (NIH3T3) and embryonic stem cells (E14Tg2a) with the antibody against mouse Lysine (K)-specific Demethylase 5B/KDM5B/JARID1B, diluted 1:500 in BSA/ PBS-Tween. The molecular weight marker (in kDa) is shown on the left; the location of the protein of interest (expected size: 179 kDa) is indicated on the right.



ELISA: Lysine (K)-specific Demethylase 5B/KDM5B/JARID1B Antibody [NBP3-18678] - Figure 1. Determination of the titer To determine the titer, an ELISA was performed using a serial dilution of the antibody directed against mouse Lysine (K)-specific Demethylase 5B/KDM5B/JARID1B. The plates were coated with the peptide used for immunization of the rabbit. By plotting the absorbance against the antibody dilution (Figure 1), the titer of the antibody was estimated to be 1:2,200.





### Novus Biologicals USA

10730 E. Briarwood Avenue  
Centennial, CO 80112  
USA  
Phone: 303.730.1950  
Toll Free: 1.888.506.6887  
Fax: 303.730.1966  
nb-customerservice@bio-techne.com

### Bio-Techne Canada

21 Canmotor Ave  
Toronto, ON M8Z 4E6  
Canada  
Phone: 905.827.6400  
Toll Free: 855.668.8722  
Fax: 905.827.6402  
canada.inquires@bio-techne.com

### Bio-Techne Ltd

19 Barton Lane  
Abingdon Science Park  
Abingdon, OX14 3NB, United Kingdom  
Phone: (44) (0) 1235 529449  
Free Phone: 0800 37 34 15  
Fax: (44) (0) 1235 533420  
info.EMEA@bio-techne.com

### General Contact Information

www.novusbio.com  
Technical Support: nb-technical@bio-techne.com  
Orders: nb-customerservice@bio-techne.com  
General: novus@novusbio.com

### Products Related to NBP3-18678-100ul

---

NBP2-33376H	Blue Marker Antibody (6F4-F6) [HRP]
HAF008	Goat anti-Rabbit IgG Secondary Antibody [HRP]
NB7160	Goat anti-Rabbit IgG (H+L) Secondary Antibody [HRP]
NBP1-97310PEP	Lysine (K)-specific Demethylase 5B/KDM5B/JARID1B Antibody Blocking Peptide

---

### Limitations

This product is for research use only and is not approved for use in humans or in clinical diagnosis. Primary Antibodies are guaranteed for 1 year from date of receipt.

For more information on our 100% guarantee, please visit [www.novusbio.com/guarantee](http://www.novusbio.com/guarantee)

Earn gift cards/discounts by submitting a review: [www.novusbio.com/reviews/submit/NBP3-18678](http://www.novusbio.com/reviews/submit/NBP3-18678)

Earn gift cards/discounts by submitting a publication using this product:  
[www.novusbio.com/publications](http://www.novusbio.com/publications)

