

Product Datasheet

KMT2D Antibody NBP3-18671-100ul

Unit Size: 100 ul

Store at -20C short term. Aliquot and store at -80C long term. Avoid freeze-thaw cycles.

www.novusbio.com



technical@novusbio.com

Protocols, Publications, Related Products, Reviews, Research Tools and Images at:
www.novusbio.com/NBP3-18671

Updated 9/9/2025 v.20.1

Earn rewards for product
reviews and publications.

Submit a publication at www.novusbio.com/publications

Submit a review at www.novusbio.com/reviews/destination/NBP3-18671



NBP3-18671-100ul

KMT2D Antibody

Product Information	
Unit Size	100 ul
Concentration	Please see the vial label for concentration. If unlisted please contact technical services.
Storage	Store at -20C short term. Aliquot and store at -80C long term. Avoid freeze-thaw cycles.
Clonality	Polyclonal
Preservative	0.05% Sodium Azide
Purity	Whole Antiserum
Buffer	Whole antiserum

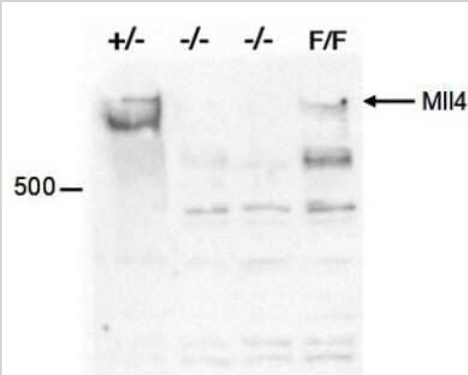
Product Description	
Description	Novus Biologicals Rabbit KMT2D Antibody (NBP3-18671) is a polyclonal antibody validated for use in WB and ELISA. All Novus Biologicals antibodies are covered by our 100% guarantee.
Host	Rabbit
Gene ID	8085
Gene Symbol	KMT2D
Species	Mouse
Immunogen	Polyclonal antibody raised in rabbit against mouse KMT2D (Myeloid/lymphoid or mixed-lineage leukemia protein 4), using three KLH-conjugated synthetic peptides containing an amino acid sequence from the central part of the protein (1).

Product Application Details	
Applications	Western Blot, ELISA
Recommended Dilutions	Western Blot 1:500, ELISA 1:1000-1:5000

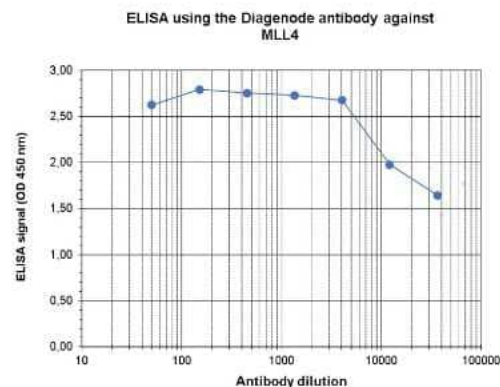


Images

Western Blot: KMT2D Antibody [NBP3-18671] - Figure 2. Western blot analysis using the antibody directed against KMT2D (1) Western blot was performed on whole cell lysates from mouse embryonic stem cells (E14Tg2a) with the antibody against mouse KMT2D (ca. No. C15310100), diluted 1:500 in PBS-Tween containing 5% skimmed milk. The location of the protein of interest (~ 600 kDa) is indicated on the right; the location of the 500 kDa MW marker is shown on the left. Cells homozygous for the targeted *ml14* allele (-/-) show a complete loss of KMT2D protein, whereas the KMT2D protein was detected in flp-recombined ES cells (F/F) and heterozygously targeted ES cells (+/-).



ELISA: KMT2D Antibody [NBP3-18671] - Figure 1. Determination of the titer To determine the titer, an ELISA was performed using a serial dilution of the antibody directed against mouse KMT2D . The wells were coated with the peptides used for immunisation of the rabbit. By plotting the absorbance against the antibody dilution (Figure 1), the titer of the antibody was estimated to be 1:54,000.





Novus Biologicals USA

10730 E. Briarwood Avenue
Centennial, CO 80112
USA
Phone: 303.730.1950
Toll Free: 1.888.506.6887
Fax: 303.730.1966
nb-customerservice@bio-techne.com

Bio-Techne Canada

21 Canmotor Ave
Toronto, ON M8Z 4E6
Canada
Phone: 905.827.6400
Toll Free: 855.668.8722
Fax: 905.827.6402
canada.inquires@bio-techne.com

Bio-Techne Ltd

19 Barton Lane
Abingdon Science Park
Abingdon, OX14 3NB, United Kingdom
Phone: (44) (0) 1235 529449
Free Phone: 0800 37 34 15
Fax: (44) (0) 1235 533420
info.EMEA@bio-techne.com

General Contact Information

www.novusbio.com
Technical Support: nb-technical@bio-techne.com
Orders: nb-customerservice@bio-techne.com
General: novus@novusbio.com

Products Related to NBP3-18671-100ul

NBP2-33376H	Blue Marker Antibody (6F4-F6) [HRP]
HAF008	Goat anti-Rabbit IgG Secondary Antibody [HRP]
NB7160	Goat anti-Rabbit IgG (H+L) Secondary Antibody [HRP]
H00008085-Q01-10ug	Recombinant Human KMT2D GST (N-Term) Protein

Limitations

This product is for research use only and is not approved for use in humans or in clinical diagnosis. Primary Antibodies are guaranteed for 1 year from date of receipt.

For more information on our 100% guarantee, please visit www.novusbio.com/guarantee

Earn gift cards/discounts by submitting a review: www.novusbio.com/reviews/submit/NBP3-18671

Earn gift cards/discounts by submitting a publication using this product:
www.novusbio.com/publications

