

# Product Datasheet

## **MBD3 Antibody** **NBP3-18656-100ul**

Unit Size: 100 ul

Store at -20C short term. Aliquot and store at -80C long term. Avoid freeze-thaw cycles.

[www.novusbio.com](http://www.novusbio.com)



[technical@novusbio.com](mailto:technical@novusbio.com)

Protocols, Publications, Related Products, Reviews, Research Tools and Images at:  
[www.novusbio.com/NBP3-18656](http://www.novusbio.com/NBP3-18656)

Updated 9/9/2025 v.20.1

**Earn rewards for product  
reviews and publications.**

Submit a publication at [www.novusbio.com/publications](http://www.novusbio.com/publications)

Submit a review at [www.novusbio.com/reviews/destination/NBP3-18656](http://www.novusbio.com/reviews/destination/NBP3-18656)



**NBP3-18656-100ul****MBD3 Antibody**

<b>Product Information</b>	
<b>Unit Size</b>	100 ul
<b>Concentration</b>	Please see the vial label for concentration. If unlisted please contact technical services.
<b>Storage</b>	Store at -20C short term. Aliquot and store at -80C long term. Avoid freeze-thaw cycles.
<b>Clonality</b>	Polyclonal
<b>Preservative</b>	0.05% Sodium Azide
<b>Purity</b>	Whole Antiserum
<b>Buffer</b>	Whole antiserum

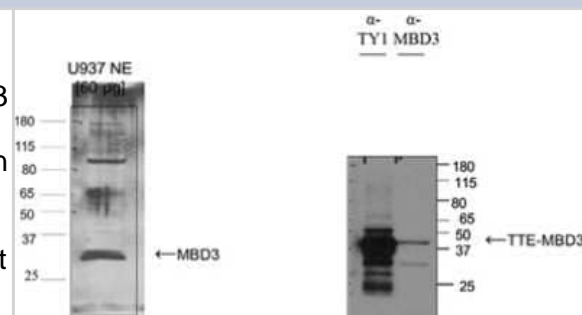
<b>Product Description</b>	
<b>Description</b>	Novus Biologicals Rabbit MBD3 Antibody (NBP3-18656) is a polyclonal antibody validated for use in WB and ELISA. All Novus Biologicals antibodies are covered by our 100% guarantee.
<b>Host</b>	Rabbit
<b>Gene ID</b>	53615
<b>Gene Symbol</b>	MBD3
<b>Species</b>	Human
<b>Immunogen</b>	Polyclonal antibody raised in rabbit against human MBD3 (Methyl-CpG-binding domain protein 3), using three different KLH-conjugated synthetic peptides.

<b>Product Application Details</b>	
<b>Applications</b>	Western Blot, ELISA
<b>Recommended Dilutions</b>	Western Blot 1:2000, ELISA 1:100-1:500

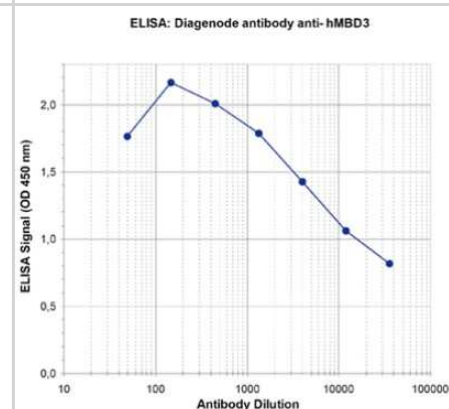


## Images

**Western Blot: MBD3 Antibody [NBP3-18656] - Figure 2A:** Western blot was performed on nuclear extracts from a Human leukemic monocyte lymphoma cell line (U937 NE, 60 ug) with antibody against human MBD3, diluted 1:2,000 in TBS-Tween with 5% skimmed milk. The MW marker (in kDa) is on the left; the location of the protein of interest is indicated on the right. **Figure 2B:** TY1-tagged MBD3 (TTE-MBD3) was over-expressed in osteosarcoma cells (U2OS). Nuclear extracts were prepared and separated by electrophoresis. An antibody directed against the TY1 tag or the antibody against MBD3 (1:2,000 in TBS-Tween containing 5% skimmed milk) were used to detect TTE-MBD3 (lane 1 and 2, respectively). Location of tagged MBD3 is indicated with an arrow.



**ELISA: MBD3 Antibody [NBP3-18656] - Figure 1.** Determination of the antibody titer To determine the titer of the antibody, an ELISA was performed using a serial dilution of the antibody directed against human MBD3. The wells were coated with the peptides used for immunisation of the rabbit. By plotting the absorbance against the antibody dilution (Figure 1), the titer of the antibody was estimated to be 1:13,890.





### **Novus Biologicals USA**

10730 E. Briarwood Avenue  
Centennial, CO 80112  
USA  
Phone: 303.730.1950  
Toll Free: 1.888.506.6887  
Fax: 303.730.1966  
nb-customerservice@bio-techne.com

### **Bio-Techne Canada**

21 Canmotor Ave  
Toronto, ON M8Z 4E6  
Canada  
Phone: 905.827.6400  
Toll Free: 855.668.8722  
Fax: 905.827.6402  
canada.inquires@bio-techne.com

### **Bio-Techne Ltd**

19 Barton Lane  
Abingdon Science Park  
Abingdon, OX14 3NB, United Kingdom  
Phone: (44) (0) 1235 529449  
Free Phone: 0800 37 34 15  
Fax: (44) (0) 1235 533420  
info.EMEA@bio-techne.com

### **General Contact Information**

www.novusbio.com  
Technical Support: nb-technical@bio-techne.com  
Orders: nb-customerservice@bio-techne.com  
General: novus@novusbio.com

### **Products Related to NBP3-18656-100ul**

---

HAF008	Goat anti-Rabbit IgG Secondary Antibody [HRP]
NB7160	Goat anti-Rabbit IgG (H+L) Secondary Antibody [HRP]
NBP2-23231	Recombinant Human MBD3 His Protein
7734-LF-025	LIF [Unconjugated]

---

### **Limitations**

This product is for research use only and is not approved for use in humans or in clinical diagnosis. Primary Antibodies are guaranteed for 1 year from date of receipt.

For more information on our 100% guarantee, please visit [www.novusbio.com/guarantee](http://www.novusbio.com/guarantee)

Earn gift cards/discounts by submitting a review: [www.novusbio.com/reviews/submit/NBP3-18656](http://www.novusbio.com/reviews/submit/NBP3-18656)

Earn gift cards/discounts by submitting a publication using this product:  
[www.novusbio.com/publications](http://www.novusbio.com/publications)

