

Product Datasheet

LSD1 Antibody NBP3-18640-100ul

Unit Size: 100 ul

Store at -20C short term. Aliquot and store at -80C long term. Avoid freeze-thaw cycles.

www.novusbio.com



technical@novusbio.com

Protocols, Publications, Related Products, Reviews, Research Tools and Images at:
www.novusbio.com/NBP3-18640

Updated 9/9/2025 v.20.1

Earn rewards for product
reviews and publications.

Submit a publication at www.novusbio.com/publications

Submit a review at www.novusbio.com/reviews/destination/NBP3-18640



NBP3-18640-100ul

LSD1 Antibody

Product Information	
Unit Size	100 ul
Concentration	Please see the vial label for concentration. If unlisted please contact technical services.
Storage	Store at -20C short term. Aliquot and store at -80C long term. Avoid freeze-thaw cycles.
Clonality	Polyclonal
Preservative	0.05% Sodium Azide
Purity	Whole Antiserum
Buffer	Whole antiserum

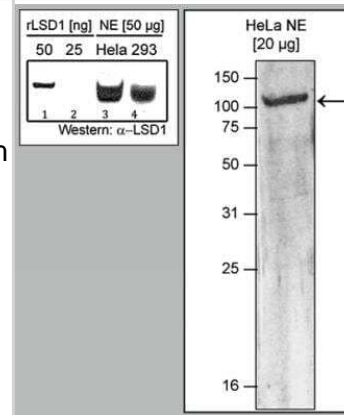
Product Description	
Description	Novus Biologicals Rabbit LSD1 Antibody (NBP3-18640) is a polyclonal antibody validated for use in WB. All Novus Biologicals antibodies are covered by our 100% guarantee.
Host	Rabbit
Gene ID	23028
Gene Symbol	KDM1A
Species	Human
Immunogen	Polyclonal antibody raised in rabbit against human LSD1 (Lysine-specific demethylase 1), using the full length recombinant protein.

Product Application Details	
Applications	Western Blot
Recommended Dilutions	Western Blot 1:1000

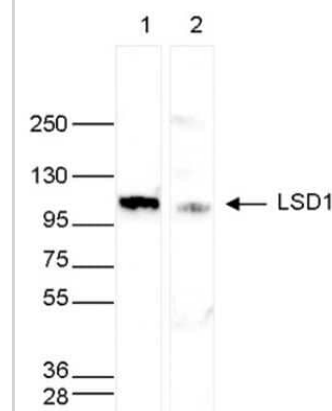


Images

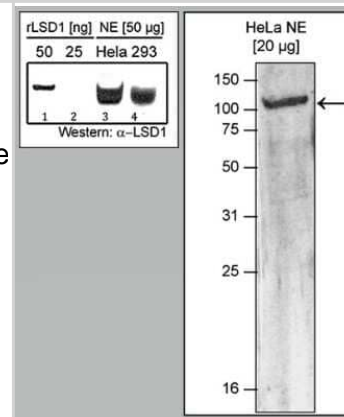
Western Blot: LSD1 Antibody [NBP3-18640] - Figure 1. Western blot analysis using the antibody directed against LSD1 Figure 1A: Western blot was performed with the antibody against LSD1 diluted 1:1,000 in TBS-Tween containing 5% skimmed milk on purified recombinant LSD1 protein (50 and 25 ng, lane 1 and 2) and on nuclear extracts (50 ug) from HeLa and HEK293 cells (lane 3 and 4, respectively).



Western Blot: LSD1 Antibody [NBP3-18640] - Figure 2. Western blot analysis using the antibody directed against LSD1 Whole cell extracts (40 ug) from HeLa cells transfected with LSD1 siRNA (lane 2) and from an untransfected control (lane 1) were analysed by Western blot using the antibody against LSD1 diluted 1:1,000 in TBS-Tween containing 5% skimmed milk. The position of the protein of interest is indicated on the right; the marker (in kDa) is shown on the left.



Western Blot: LSD1 Antibody [NBP3-18640] - Figure 1. Western blot analysis using the antibody directed against LSD1 Figure 1B: Western blot was performed as described above using nuclear extracts from HeLa cells (HeLa NE, 20 ug). The molecular weight marker (in kDa) is shown on the left; the location of the protein of interest is indicated on the right.





Novus Biologicals USA

10730 E. Briarwood Avenue
Centennial, CO 80112
USA
Phone: 303.730.1950
Toll Free: 1.888.506.6887
Fax: 303.730.1966
nb-customerservice@bio-techne.com

Bio-Techne Canada

21 Canmotor Ave
Toronto, ON M8Z 4E6
Canada
Phone: 905.827.6400
Toll Free: 855.668.8722
Fax: 905.827.6402
canada.inquires@bio-techne.com

Bio-Techne Ltd

19 Barton Lane
Abingdon Science Park
Abingdon, OX14 3NB, United Kingdom
Phone: (44) (0) 1235 529449
Free Phone: 0800 37 34 15
Fax: (44) (0) 1235 533420
info.EMEA@bio-techne.com

General Contact Information

www.novusbio.com
Technical Support: nb-technical@bio-techne.com
Orders: nb-customerservice@bio-techne.com
General: novus@novusbio.com

Products Related to NBP3-18640-100ul

NBP2-33376H	Blue Marker Antibody (6F4-F6) [HRP]
HAF008	Goat anti-Rabbit IgG Secondary Antibody [HRP]
NB7160	Goat anti-Rabbit IgG (H+L) Secondary Antibody [HRP]
H00023028-P01-10ug	Recombinant Human LSD1 GST (N-Term) Protein

Limitations

This product is for research use only and is not approved for use in humans or in clinical diagnosis. Primary Antibodies are guaranteed for 1 year from date of receipt.

For more information on our 100% guarantee, please visit www.novusbio.com/guarantee

Earn gift cards/discounts by submitting a review: www.novusbio.com/reviews/submit/NBP3-18640

Earn gift cards/discounts by submitting a publication using this product:
www.novusbio.com/publications

