

# Product Datasheet

## ASH2L Antibody NBP3-18639-100ul

Unit Size: 100 ul

Store at -20C short term. Aliquot and store at -80C long term. Avoid freeze-thaw cycles.

[www.novusbio.com](http://www.novusbio.com)



[technical@novusbio.com](mailto:technical@novusbio.com)

Protocols, Publications, Related Products, Reviews, Research Tools and Images at:  
[www.novusbio.com/NBP3-18639](http://www.novusbio.com/NBP3-18639)

Updated 9/9/2025 v.20.1

Earn rewards for product  
reviews and publications.

Submit a publication at [www.novusbio.com/publications](http://www.novusbio.com/publications)

Submit a review at [www.novusbio.com/reviews/destination/NBP3-18639](http://www.novusbio.com/reviews/destination/NBP3-18639)



**NBP3-18639-100ul**

ASH2L Antibody

<b>Product Information</b>	
<b>Unit Size</b>	100 ul
<b>Concentration</b>	Please see the vial label for concentration. If unlisted please contact technical services.
<b>Storage</b>	Store at -20C short term. Aliquot and store at -80C long term. Avoid freeze-thaw cycles.
<b>Clonality</b>	Polyclonal
<b>Preservative</b>	0.05% Sodium Azide
<b>Purity</b>	Whole Antiserum
<b>Buffer</b>	Whole antiserum

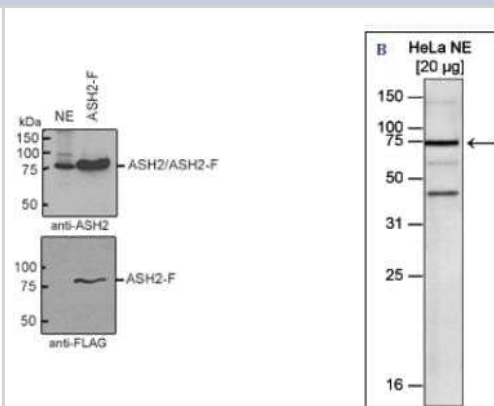
<b>Product Description</b>	
<b>Description</b>	Novus Biologicals Rabbit ASH2L Antibody (NBP3-18639) is a polyclonal antibody validated for use in WB. All Novus Biologicals antibodies are covered by our 100% guarantee.
<b>Host</b>	Rabbit
<b>Gene ID</b>	9070
<b>Gene Symbol</b>	ASH2L
<b>Species</b>	Human
<b>Immunogen</b>	Polyclonal antibody raised in rabbit against human ASH2L (absent, small, or homeotic 2), using a recombinant protein.

<b>Product Application Details</b>	
<b>Applications</b>	Western Blot
<b>Recommended Dilutions</b>	Western Blot 1:1000

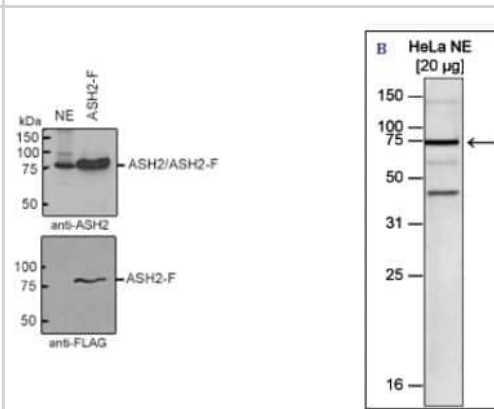


## Images

Western Blot: ASH2L Antibody [NBP3-18639] - Figure 1. Western blot analysis using the antibody directed against ASH2L Figure 1A: Western blot was performed using the antibody against hASH2L diluted 1:1,000 in TBS-Tween containing 5% skimmed milk on nuclear extracts from HeLa cells (upper panel: lane 1) and ectopically expressed FLAG-tagged ASH2L (ASH2L-F, upper panel: lane 2). The lower panel shows the same western blot with an anti-FLAG antibody. The molecular weight marker is shown on the left.



Western Blot: ASH2L Antibody [NBP3-18639] - Figure 1. Western blot analysis using the antibody directed against ASH2L Figure 1B: Western blot was performed using nuclear extracts from HeLa cells (HeLa NE, 20 ug) with the antibody against ASH2L diluted 1:1,000 in TBS-Tween containing 5% skimmed milk. The molecular weight marker (in kDa) is shown on the left; the location of the protein of interest is indicated on the right.





### **Novus Biologicals USA**

10730 E. Briarwood Avenue  
Centennial, CO 80112  
USA  
Phone: 303.730.1950  
Toll Free: 1.888.506.6887  
Fax: 303.730.1966  
nb-customerservice@bio-techne.com

### **Bio-Techne Canada**

21 Canmotor Ave  
Toronto, ON M8Z 4E6  
Canada  
Phone: 905.827.6400  
Toll Free: 855.668.8722  
Fax: 905.827.6402  
canada.inquires@bio-techne.com

### **Bio-Techne Ltd**

19 Barton Lane  
Abingdon Science Park  
Abingdon, OX14 3NB, United Kingdom  
Phone: (44) (0) 1235 529449  
Free Phone: 0800 37 34 15  
Fax: (44) (0) 1235 533420  
info.EMEA@bio-techne.com

### **General Contact Information**

www.novusbio.com  
Technical Support: nb-technical@bio-techne.com  
Orders: nb-customerservice@bio-techne.com  
General: novus@novusbio.com

### **Products Related to NBP3-18639-100ul**

---

NBP2-33376H	Blue Marker Antibody (6F4-F6) [HRP]
HAF008	Goat anti-Rabbit IgG Secondary Antibody [HRP]
NB7160	Goat anti-Rabbit IgG (H+L) Secondary Antibody [HRP]
NBP1-88858PEP	ASH2L Recombinant Protein Antigen

---

### **Limitations**

This product is for research use only and is not approved for use in humans or in clinical diagnosis. Primary Antibodies are guaranteed for 1 year from date of receipt.

For more information on our 100% guarantee, please visit [www.novusbio.com/guarantee](http://www.novusbio.com/guarantee)

Earn gift cards/discounts by submitting a review: [www.novusbio.com/reviews/submit/NBP3-18639](http://www.novusbio.com/reviews/submit/NBP3-18639)

Earn gift cards/discounts by submitting a publication using this product:  
[www.novusbio.com/publications](http://www.novusbio.com/publications)

