

Product Datasheet

CCDC101 Antibody NBP3-18637-100ul

Unit Size: 100 ul

Store at -20C short term. Aliquot and store at -80C long term. Avoid freeze-thaw cycles.

www.novusbio.com



technical@novusbio.com

Protocols, Publications, Related Products, Reviews, Research Tools and Images at:
www.novusbio.com/NBP3-18637

Updated 9/9/2025 v.20.1

Earn rewards for product
reviews and publications.

Submit a publication at www.novusbio.com/publications

Submit a review at www.novusbio.com/reviews/destination/NBP3-18637



NBP3-18637-100ul

CCDC101 Antibody

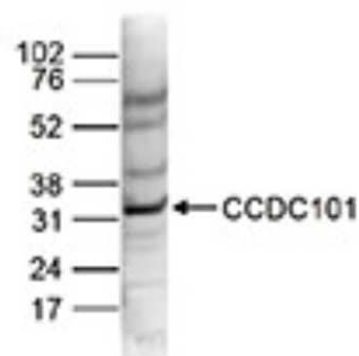
Product Information	
Unit Size	100 ul
Concentration	Please see the vial label for concentration. If unlisted please contact technical services.
Storage	Store at -20C short term. Aliquot and store at -80C long term. Avoid freeze-thaw cycles.
Clonality	Polyclonal
Preservative	0.05% Sodium Azide
Purity	Whole Antiserum
Buffer	Whole antiserum

Product Description	
Description	Novus Biologicals Rabbit CCDC101 Antibody (NBP3-18637) is a polyclonal antibody validated for use in WB and ELISA. All Novus Biologicals antibodies are covered by our 100% guarantee.
Host	Rabbit
Gene ID	112869
Gene Symbol	SGF29
Species	Human
Immunogen	Polyclonal antibody raised in rabbit against human CCDC101 (coiled-coil domain containing 101), using two KLH-conjugated synthetic peptides containing a sequence from the central and from the C-terminal part of the protein, respectively.

Product Application Details	
Applications	Western Blot, ELISA
Recommended Dilutions	Western Blot 1:1000, ELISA 1:100-1:200

Images

Western Blot: CCDC101 Antibody [NBP3-18637] - Figure 2. Western blot analysis using the antibody directed against CCDC101 Nuclear extracts of HeLa cells (40 ug) were analysed by Western blot using the antibody against CCDC101 diluted 1:1,000 in TBS-Tween containing 5% skimmed milk. The position of the protein of interest (expected size: 33 kDa) is indicated on the right; the marker (in kDa) is shown on the left.



ELISA: CCDC101 Antibody [NBP3-18637] - Figure 1. Determination of the titer To determine the titer, an ELISA was performed using a serial dilution of the antibody directed against human CCDC101 . The plates were coated with the peptides used for immunization of the rabbit. By plotting the absorbance against the antibody dilution (Figure 1), the titer of the antibody was estimated to be 1:13,700.





Novus Biologicals USA

10730 E. Briarwood Avenue
Centennial, CO 80112
USA
Phone: 303.730.1950
Toll Free: 1.888.506.6887
Fax: 303.730.1966
nb-customerservice@bio-techne.com

Bio-Techne Canada

21 Canmotor Ave
Toronto, ON M8Z 4E6
Canada
Phone: 905.827.6400
Toll Free: 855.668.8722
Fax: 905.827.6402
canada.inquires@bio-techne.com

Bio-Techne Ltd

19 Barton Lane
Abingdon Science Park
Abingdon, OX14 3NB, United Kingdom
Phone: (44) (0) 1235 529449
Free Phone: 0800 37 34 15
Fax: (44) (0) 1235 533420
info.EMEA@bio-techne.com

General Contact Information

www.novusbio.com
Technical Support: nb-technical@bio-techne.com
Orders: nb-customerservice@bio-techne.com
General: novus@novusbio.com

Products Related to NBP3-18637-100ul

NBP2-33376H	Blue Marker Antibody (6F4-F6) [HRP]
HAF008	Goat anti-Rabbit IgG Secondary Antibody [HRP]
NB7160	Goat anti-Rabbit IgG (H+L) Secondary Antibody [HRP]
NBP2-22786	Recombinant Human CCDC101 His Protein

Limitations

This product is for research use only and is not approved for use in humans or in clinical diagnosis. Primary Antibodies are guaranteed for 1 year from date of receipt.

For more information on our 100% guarantee, please visit www.novusbio.com/guarantee

Earn gift cards/discounts by submitting a review: www.novusbio.com/reviews/submit/NBP3-18637

Earn gift cards/discounts by submitting a publication using this product:
www.novusbio.com/publications

