

Product Datasheet

alpha-Synuclein [Cys Glu134, p Ser129] Antibody (J18) - BSA Free NBP3-18266

Unit Size: 100 ug

Store at -20C. Avoid freeze-thaw cycles.

www.novusbio.com



technical@novusbio.com

Protocols, Publications, Related Products, Reviews, Research Tools and Images at:
www.novusbio.com/NBP3-18266

Updated 9/9/2025 v.20.1

Earn rewards for product
reviews and publications.

Submit a publication at www.novusbio.com/publications

Submit a review at www.novusbio.com/reviews/destination/NBP3-18266



NBP3-18266

alpha-Synuclein [Cys Glu134, p Ser129] Antibody (J18) - BSA Free

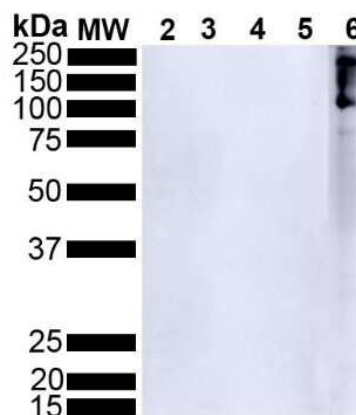
Product Information	
Unit Size	100 ug
Concentration	1 mg/ml
Storage	Store at -20C. Avoid freeze-thaw cycles.
Clonality	Monoclonal
Clone	J18
Preservative	0.09% Sodium Azide
Isotype	IgG
Purity	Affinity purified
Buffer	PBS pH 7.4, 50% glycerol

Product Description	
Description	Novus Biologicals Rabbit alpha-Synuclein [Cys Glu134, p Ser129] Antibody (J18) - BSA Free (NBP3-18266) is a recombinant monoclonal antibody validated for use in IHC, WB, ELISA and ICC/IF. All Novus Biologicals antibodies are covered by our 100% guarantee.
Host	Rabbit
Gene ID	6622
Gene Symbol	SNCA
Species	Human, Mouse
Specificity/Sensitivity	Binds to phosphorylated serine 129 on alpha synuclein. Does not detect unphosphorylated serine 129 alpha synuclein
Immunogen	Human alpha-Synuclein AA 124-134: AYEMP-pS-EEGYQ-Cys

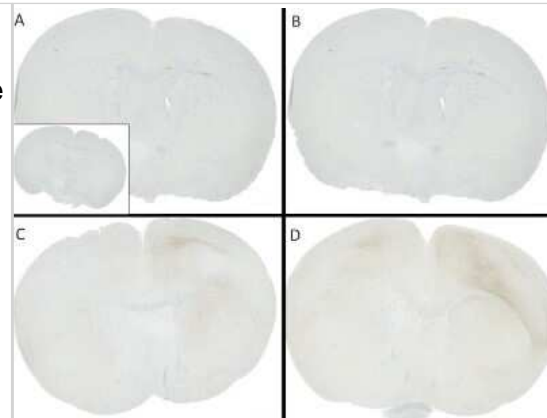
Product Application Details	
Applications	Western Blot, Dot Blot, ELISA, Immunocytochemistry/ Immunofluorescence, Immunohistochemistry
Recommended Dilutions	Western Blot 1:500, ELISA, Immunohistochemistry, Immunocytochemistry/ Immunofluorescence, Dot Blot
Application Notes	Optimal dilutions for assays should be determined by the user.

Images

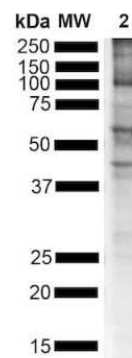
Western Blot: alpha-Synuclein [p Ser 129] Antibody (J18) [NBP3-18266] - Western Blot analysis of Human Alpha Synuclein showing detection of alpha-Synuclein protein using Rabbit Anti-alpha-Synuclein Monoclonal Antibody, Clone J18 (NBP3-18266). Lane 1: MW ladder. Lane 2: 0.5 ug human alpha synuclein monomer (SPR-321). Lane 3: 2 ug human alpha synuclein monomer (SPR-321). Lane 4: 0.5 ug human alpha synuclein PFFs (SPR-322). Lane 5: 2 ug human alpha synuclein PFFs (SPR-322). Lane 6: 15 ug human Parkinson's Disease brain lysate.. Block: 5% BSA in TBST. Primary Antibody: Rabbit Anti-alpha-Synuclein Monoclonal Antibody (NBP3-18266) at 1:500 for 2 hours at RT with shaking. Secondary Antibody: Goat anti-mouse IgG:HRP at 1:4000 for 1 hour at RT with shaking. Color Development: Chemiluminescent for HRP (Moss) for 5 min in RT. NBP3-18266 does not detect unphosphorylated alpha synuclein.



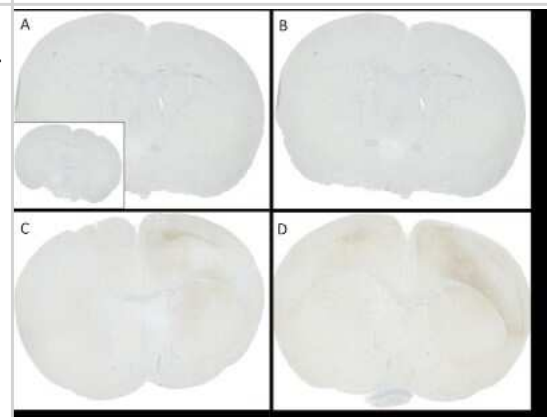
Immunohistochemistry: alpha-Synuclein [p Ser 129] Antibody (J18) [NBP3-18266] - C57/BL6 mice were injected with sonicated recombinant mouse alpha synuclein monomers or fibrils at 8 weeks of age. Mice were unilaterally injected in the dorsal striatum (bregma AP + 0.2 mm, L +/1 2.0 mm, V - 3.0 mm) and sacrificed 30 days post-injection. (A) 1.25 uL mouse alpha synuclein monomers. (B) 2.5 uL mouse alpha synuclein monomers. (C) 2.5 ug alpha synuclein PFFs. (D) 5 ug alpha synuclein PFFs Inset: PBS (negative control). Primary antibody: Anti-alpha-Synuclein (NBP3-18266) at 1:10 000. Secondary antibody: anti-rabbit HRP. Mice injected with PFF displayed alpha synuclein staining in the striatum and cortex and contralateral to the injection site.



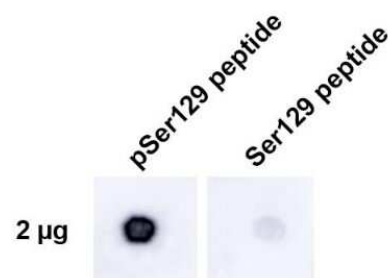
Western Blot: alpha-Synuclein [p Ser 129] Antibody (J18) [NBP3-18266] - Western Blot analysis of Mouse Brain showing detection of alpha-Synuclein protein using Rabbit Anti-alpha-Synuclein Monoclonal Antibody, Clone J18 (NBP3-18266). Lane 1: MW ladder. Lane 2: Mouse brain. Load: 15 ug. Block: 5% BSA in TBST. Primary Antibody: Rabbit Anti-alpha-Synuclein Monoclonal Antibody (NBP3-18266) at 1:500 for 2 hours at RT with shaking. Secondary Antibody: Goat anti-mouse IgG:HRP at 1:4000 for 1 hour at RT with shaking. Color Development: Chemiluminescent for HRP (Moss) for 5 min in RT. Multiple bands due to phosphorylation.



Immunohistochemistry: alpha-Synuclein [p Ser 129] Antibody (J18) [NBP3-18266] - Immunohistochemistry analysis using Mouse Anti-alpha-Synuclein Monoclonal Antibody, Clone J18 (NBP3-18266). C57/BL6 mice were injected with 5 ug sonicated mouse recombinant alpha synuclein PFFs at 8 weeks of age. Mice were unilaterally injected in the dorsal striatum (bregma AP + 0.2 mm, L +/1 2.0 mm, V - 3.0 mm) and sacrificed 30 days post-injection. (A) contralateral cortex. (B) ipsilateral cortex. (C) contralateral striatum. (D) ipsilateral striatum. Primary Antibody: Mouse Anti-alpha-Synuclein Monoclonal Antibody (NBP3-18266) at 1:10000. Secondary Antibody: anti-rabbit HRP. Courtesy of: Porsolt.



Dot Blot: alpha-Synuclein [p Ser 129] Antibody (J18) [NBP3-18266] - Dot Blot analysis using Rabbit Anti-alpha-Synuclein Monoclonal Antibody, Clone J18 (NBP3-18266). Tissue: alpha synuclein peptide. Primary Antibody: Rabbit Anti-alpha-Synuclein Monoclonal Antibody (NBP3-18266) at 1:500 for 2 hours at RT with shaking. Secondary Antibody: Goat anti-rabbit IgG:HRP at 1:4000 for 1 hour at RT with shaking. Phospho peptide sequence: AYEMP-pS-EEGYQ. Non-phospho peptide sequence: AYEMPSEEGYQ. This sequence is the same for human, mouse, and rat.





Novus Biologicals USA

10730 E. Briarwood Avenue
Centennial, CO 80112
USA
Phone: 303.730.1950
Toll Free: 1.888.506.6887
Fax: 303.730.1966
nb-customerservice@bio-techne.com

Bio-Techne Canada

21 Canmotor Ave
Toronto, ON M8Z 4E6
Canada
Phone: 905.827.6400
Toll Free: 855.668.8722
Fax: 905.827.6402
canada.inquires@bio-techne.com

Bio-Techne Ltd

19 Barton Lane
Abingdon Science Park
Abingdon, OX14 3NB, United Kingdom
Phone: (44) (0) 1235 529449
Free Phone: 0800 37 34 15
Fax: (44) (0) 1235 533420
info.EMEA@bio-techne.com

General Contact Information

www.novusbio.com
Technical Support: nb-technical@bio-techne.com
Orders: nb-customerservice@bio-techne.com
General: novus@novusbio.com

Products Related to NBP3-18266

NBP2-33376H	Blue Marker Antibody (6F4-F6) [HRP]
HAF008	Goat anti-Rabbit IgG Secondary Antibody [HRP]
NB7160	Goat anti-Rabbit IgG (H+L) Secondary Antibody [HRP]
NBP2-24891	Rabbit IgG Isotype Control

Limitations

This product is for research use only and is not approved for use in humans or in clinical diagnosis. Primary Antibodies are guaranteed for 1 year from date of receipt.

For more information on our 100% guarantee, please visit www.novusbio.com/guarantee

Earn gift cards/discounts by submitting a review: www.novusbio.com/reviews/submit/NBP3-18266

Earn gift cards/discounts by submitting a publication using this product:
www.novusbio.com/publications

