

Product Datasheet

alpha-Synuclein Antibody (3C11) - BSA Free NBP3-18258

Unit Size: 100 ug

Store at -20C. Avoid freeze-thaw cycles.

www.novusbio.com



technical@novusbio.com

Protocols, Publications, Related Products, Reviews, Research Tools and Images at:
www.novusbio.com/NBP3-18258

Updated 9/9/2025 v.20.1

Earn rewards for product
reviews and publications.

Submit a publication at www.novusbio.com/publications

Submit a review at www.novusbio.com/reviews/destination/NBP3-18258



NBP3-18258

alpha-Synuclein Antibody (3C11) - BSA Free

Product Information	
Unit Size	100 ug
Concentration	1 mg/ml
Storage	Store at -20C. Avoid freeze-thaw cycles.
Clonality	Monoclonal
Clone	3C11
Preservative	0.09% Sodium Azide
Isotype	IgG1
Purity	Protein G purified
Buffer	PBS pH 7.4, 50% glycerol

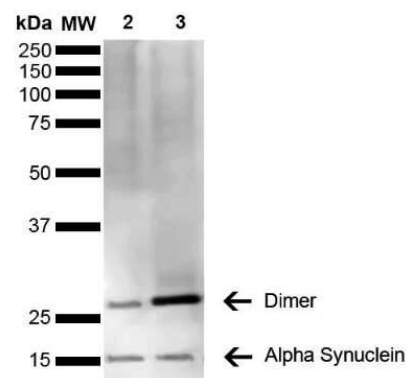
Product Description	
Description	Novus Biologicals Mouse alpha-Synuclein Antibody (3C11) - BSA Free (NBP3-18258) is a monoclonal antibody validated for use in IHC, WB, ELISA and ICC/IF. All Novus Biologicals antibodies are covered by our 100% guarantee.
Host	Mouse
Gene ID	6622
Gene Symbol	SNCA
Species	Human, Mouse, Rat
Specificity/Sensitivity	Binds within the 81-130 aa region of human ASYN, determined using WB and ELISA with corresponding peptides. Detects ~14 kDa band corresponding to ASYN. Band at ~30 kDa is a dimer.
Immunogen	Human alpha-Synuclein monomer

Product Application Details	
Applications	Western Blot, Dot Blot, ELISA, Immunocytochemistry/ Immunofluorescence, Immunohistochemistry
Recommended Dilutions	Western Blot 1:1000, ELISA 1:1000, Immunohistochemistry, Immunocytochemistry/ Immunofluorescence 1:100, Dot Blot 1:1000
Application Notes	Optimal dilutions for assays should be determined by the user.

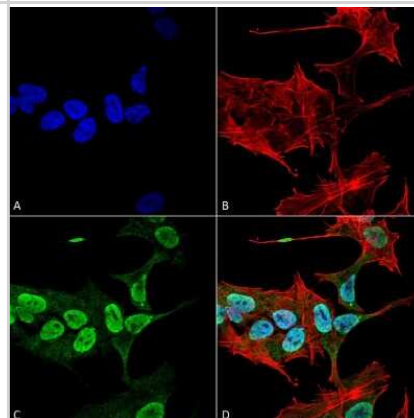


Images

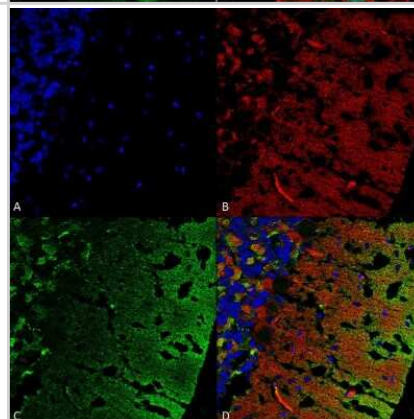
Western Blot: alpha-Synuclein Antibody (3C11) [NBP3-18258] - Western Blot analysis of Human Brain showing detection of 14 kDa alpha-Synuclein protein using Mouse Anti-alpha-Synuclein Monoclonal Antibody, Clone 3C11 (NBP3-18258). Lane 1: Molecular Weight Ladder (MW). Lane 2: Parkinson brain cell lysate. Lane 3: Human brain cell lysate. Load: 15 ug. Block: 5% Skim Milk in 1X TBST. Primary Antibody: Mouse Anti-alpha-Synuclein Monoclonal Antibody (NBP3-18258) at 1:1000 for 2 hours at RT. Secondary Antibody: Goat Anti-Mouse HRP:IgG at 1:3000 for 1 hour at RT. Color Development: ECL solution (Super Signal West Pico) for 5 min in RT. Predicted/Observed Size: 14 kDa. Other Band(s): 100 kDa (oligomer).



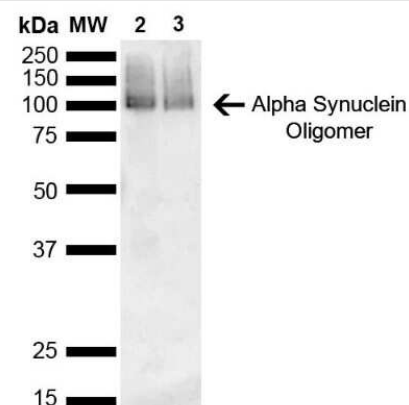
Immunocytochemistry/Immunofluorescence: alpha-Synuclein Antibody (3C11) [NBP3-18258] - Immunocytochemistry/Immunofluorescence analysis using Mouse Anti-alpha-Synuclein Monoclonal Antibody, Clone 3C11 (NBP3-18258). Tissue: Neuroblastoma cell line (SK-N-BE). Species: Human. Fixation: 4% Formaldehyde for 15 min at RT. Primary Antibody: Mouse Anti-alpha-Synuclein Monoclonal Antibody (NBP3-18258) at 1:100 for 60 min at RT. Secondary Antibody: Goat Anti-Mouse ATTO 488 at 1:200 for 60 min at RT. Counterstain: Phalloidin Texas Red F-Actin stain; DAPI (blue) nuclear stain at 1:1000, 1:5000 for 60 min at RT, 5 min at RT. Localization: Cytoplasm: weak; Nucleus: Med. Magnification: 60X. (A) DAPI (blue) nuclear stain. (B) Phalloidin Texas Red F-Actin stain. (C) alpha-Synuclein Antibody. (D) Composite.



Immunohistochemistry: alpha-Synuclein Antibody (3C11) [NBP3-18258] - Immunohistochemistry analysis using Mouse Anti-alpha-Synuclein Monoclonal Antibody, Clone 3C11 (NBP3-18258). Tissue: cerebellum. Species: Rat. Fixation: Formalin fixed, paraffin embedded. Primary Antibody: Mouse Anti-alpha-Synuclein Monoclonal Antibody (NBP3-18258) at 1:25 for 1 hour at RT. Secondary Antibody: Goat Anti-Mouse IgG: Alexa Fluor 488. Counterstain: Actin-binding Phalloidin-Alexa Fluor 633; DAPI (blue) nuclear stain. Magnification: 63X. (A) DAPI (blue) nuclear stain. (B) Phalloidin Alex Fluor 633 F-Actin stain. (C) alpha-Synuclein Antibody (D) Composite.



Western Blot: alpha-Synuclein Antibody (3C11) [NBP3-18258] - Western Blot analysis of Mouse, Rat Brain showing detection of 14 kDa alpha-Synuclein protein using Mouse Anti-alpha-Synuclein Monoclonal Antibody, Clone 3C11 (NBP3-18258). Lane 1: Molecular Weight Ladder (MW). Lane 2: Mouse brain cell lysate. Lane 3: Rat brain cell lysate. Load: 15 ug. Block: 5% Skim Milk in 1X TBST. Primary Antibody: Mouse Anti-alpha-Synuclein Monoclonal Antibody (NBP3-18258) at 1:1000 for 2 hours at RT. Secondary Antibody: Goat Anti-Mouse HRP:IgG at 1:3000 for 1 hour at RT. Color Development: ECL solution (Super Signal West Pico) for 5 min in RT. Predicted/Observed Size: 14 kDa. Other Band(s): ~30 kDa (dimer).





Novus Biologicals USA

10730 E. Briarwood Avenue
Centennial, CO 80112
USA
Phone: 303.730.1950
Toll Free: 1.888.506.6887
Fax: 303.730.1966
nb-customerservice@bio-techne.com

Bio-Techne Canada

21 Canmotor Ave
Toronto, ON M8Z 4E6
Canada
Phone: 905.827.6400
Toll Free: 855.668.8722
Fax: 905.827.6402
canada.inquires@bio-techne.com

Bio-Techne Ltd

19 Barton Lane
Abingdon Science Park
Abingdon, OX14 3NB, United Kingdom
Phone: (44) (0) 1235 529449
Free Phone: 0800 37 34 15
Fax: (44) (0) 1235 533420
info.EMEA@bio-techne.com

General Contact Information

www.novusbio.com
Technical Support: nb-technical@bio-techne.com
Orders: nb-customerservice@bio-techne.com
General: novus@novusbio.com

Products Related to NBP3-18258

NBP2-33376H	Blue Marker Antibody (6F4-F6) [HRP]
HAF007	Goat anti-Mouse IgG Secondary Antibody [HRP]
NB7539	Goat anti-Mouse IgG (H+L) Secondary Antibody [HRP]
NBP1-97005-0.5mg	Mouse IgG1 Isotype Control (MG1)

Limitations

This product is for research use only and is not approved for use in humans or in clinical diagnosis. Primary Antibodies are guaranteed for 1 year from date of receipt.

For more information on our 100% guarantee, please visit www.novusbio.com/guarantee

Earn gift cards/discounts by submitting a review: www.novusbio.com/reviews/submit/NBP3-18258

Earn gift cards/discounts by submitting a publication using this product:
www.novusbio.com/publications

