

# Product Datasheet

## epithelial Sodium Channel gamma Antibody - BSA Free NBP3-18256

Unit Size: 100 ug

Store at -20C. Avoid freeze-thaw cycles.

[www.novusbio.com](http://www.novusbio.com)



[technical@novusbio.com](mailto:technical@novusbio.com)

Protocols, Publications, Related Products, Reviews, Research Tools and Images at:  
[www.novusbio.com/NBP3-18256](http://www.novusbio.com/NBP3-18256)

Updated 9/9/2025 v.20.1

Earn rewards for product  
reviews and publications.

Submit a publication at [www.novusbio.com/publications](http://www.novusbio.com/publications)

Submit a review at [www.novusbio.com/reviews/destination/NBP3-18256](http://www.novusbio.com/reviews/destination/NBP3-18256)



**NBP3-18256**

epithelial Sodium Channel gamma Antibody - BSA Free

Product Information	
Unit Size	100 ug
Concentration	1 mg/ml
Storage	Store at -20C. Avoid freeze-thaw cycles.
Clonality	Polyclonal
Preservative	0.09% Sodium Azide
Isotype	IgG
Purity	Protein A purified
Buffer	PBS, 50% glycerol

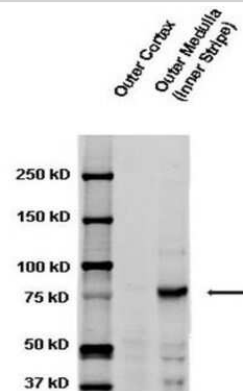
Product Description	
Description	Novus Biologicals Rabbit epithelial Sodium Channel gamma Antibody - BSA Free (NBP3-18256) is a polyclonal antibody validated for use in IHC and WB. All Novus Biologicals antibodies are covered by our 100% guarantee.
Host	Rabbit
Gene ID	6340
Gene Symbol	SCNN1G
Species	Human, Mouse, Rat, Hamster, Xenopus
Immunogen	Produced against the C-terminal tail (amino acids 629-650) of rat gamma ENaC (antibody designation L550)

Product Application Details	
Applications	Western Blot, Immunohistochemistry
Recommended Dilutions	Western Blot 1:1000, Immunohistochemistry 1:100
Application Notes	Optimal dilutions for assays should be determined by the user.

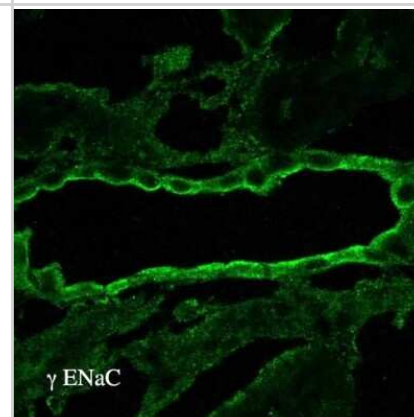


## Images

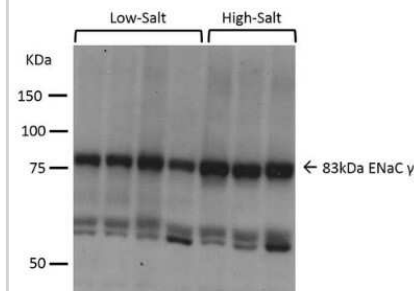
**Western Blot: epithelial Sodium Channel gamma Antibody [NBP3-18256]**  
 - Western blot analysis of Rat kidney tissue lysates showing detection of epithelial Sodium Channel gamma protein using Rabbit Anti-epithelial Sodium Channel gamma Polyclonal Antibody (NBP3-18256). Primary Antibody: Rabbit Anti-epithelial Sodium Channel gamma Polyclonal Antibody (NBP3-18256) at 1:1000.



**Immunohistochemistry: epithelial Sodium Channel gamma Antibody [NBP3-18256]**  
 - Immunohistochemistry analysis using Rabbit Anti-epithelial Sodium Channel gamma Polyclonal Antibody (NBP3-18256). Tissue: kidney tissue. Species: Rat. Primary Antibody: Rabbit Anti-epithelial Sodium Channel gamma Polyclonal Antibody (NBP3-18256) at 1:100. Secondary Antibody: FITC Goat Anti-Rabbit (green).



**Western Blot: epithelial Sodium Channel gamma Antibody [NBP3-18256]**  
 - Western blot analysis of Mouse kidney cortex showing detection of epithelial Sodium Channel gamma protein using Rabbit Anti-epithelial Sodium Channel gamma Polyclonal Antibody (NBP3-18256). Primary Antibody: Rabbit Anti-epithelial Sodium Channel gamma Polyclonal Antibody (NBP3-18256) at 1:1000. Low-salt diet (lanes 1-4) compared to a high-salt diet (lanes 5-7). 70kDa degradation band observed in low-salt.





### **Novus Biologicals USA**

10730 E. Briarwood Avenue  
Centennial, CO 80112  
USA  
Phone: 303.730.1950  
Toll Free: 1.888.506.6887  
Fax: 303.730.1966  
nb-customerservice@bio-techne.com

### **Bio-Techne Canada**

21 Canmotor Ave  
Toronto, ON M8Z 4E6  
Canada  
Phone: 905.827.6400  
Toll Free: 855.668.8722  
Fax: 905.827.6402  
canada.inquires@bio-techne.com

### **Bio-Techne Ltd**

19 Barton Lane  
Abingdon Science Park  
Abingdon, OX14 3NB, United Kingdom  
Phone: (44) (0) 1235 529449  
Free Phone: 0800 37 34 15  
Fax: (44) (0) 1235 533420  
info.EMEA@bio-techne.com

### **General Contact Information**

www.novusbio.com  
Technical Support: nb-technical@bio-techne.com  
Orders: nb-customerservice@bio-techne.com  
General: novus@novusbio.com

### **Products Related to NBP3-18256**

---

NBP2-33376H	Blue Marker Antibody (6F4-F6) [HRP]
HAF008	Goat anti-Rabbit IgG Secondary Antibody [HRP]
NB7160	Goat anti-Rabbit IgG (H+L) Secondary Antibody [HRP]
NBP2-24891	Rabbit IgG Isotype Control

---

### **Limitations**

This product is for research use only and is not approved for use in humans or in clinical diagnosis. Primary Antibodies are guaranteed for 1 year from date of receipt.

For more information on our 100% guarantee, please visit [www.novusbio.com/guarantee](http://www.novusbio.com/guarantee)

Earn gift cards/discounts by submitting a review: [www.novusbio.com/reviews/submit/NBP3-18256](http://www.novusbio.com/reviews/submit/NBP3-18256)

Earn gift cards/discounts by submitting a publication using this product:  
[www.novusbio.com/publications](http://www.novusbio.com/publications)

