

# Product Datasheet

## ELF3/ESE-1 Antibody (702V4)

### NBP3-16429-100ul

Unit Size: 100 ul

Store at -20C. Avoid freeze-thaw cycles.

[www.novusbio.com](http://www.novusbio.com)



[technical@novusbio.com](mailto:technical@novusbio.com)

Protocols, Publications, Related Products, Reviews, Research Tools and Images at:  
[www.novusbio.com/NBP3-16429](http://www.novusbio.com/NBP3-16429)

Updated 9/9/2025 v.20.1

Earn rewards for product reviews and publications.

Submit a publication at [www.novusbio.com/publications](http://www.novusbio.com/publications)

Submit a review at [www.novusbio.com/reviews/destination/NBP3-16429](http://www.novusbio.com/reviews/destination/NBP3-16429)



**NBP3-16429-100ul**

ELF3/ESE-1 Antibody (7O2V4)

Product Information	
<b>Unit Size</b>	100 ul
<b>Concentration</b>	Please see the vial label for concentration. If unlisted please contact technical services.
<b>Storage</b>	Store at -20C. Avoid freeze-thaw cycles.
<b>Clonality</b>	Monoclonal
<b>Clone</b>	7O2V4
<b>Preservative</b>	0.02% Sodium Azide
<b>Isotype</b>	IgG
<b>Purity</b>	Affinity purified
<b>Buffer</b>	PBS (pH 7.3), 50% glycerol, 0.05% BSA
<b>Target Molecular Weight</b>	41 kDa

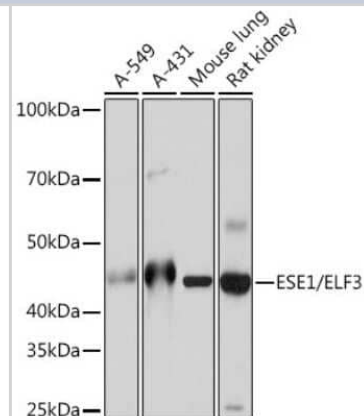
Product Description	
<b>Description</b>	Novus Biologicals Rabbit ELF3/ESE-1 Antibody (7O2V4) (NBP3-16429) is a recombinant monoclonal antibody validated for use in WB, ELISA and ChIP. All Novus Biologicals antibodies are covered by our 100% guarantee.
<b>Host</b>	Rabbit
<b>Gene ID</b>	1999
<b>Gene Symbol</b>	ELF3
<b>Species</b>	Human, Mouse, Rat
<b>Immunogen</b>	Recombinant fusion protein containing a sequence corresponding to amino acids 1-371 of human ELF3/ESE-1 (P78545). MAATCEISNIFSNYFSAMYSSDSTLASVPPAATFGADDLVLTLSPQMSLEGT EKASWLGEQPQFWSKTQVLDWISYQVEKNKYDASAI DFSRCMDMGATLCNCA LEELRLVFGPLGDQLHAQLRDLTSSSSDEL SWIELLEKDGMAFQEALDPGPF QGSPFAQELLDDGQQASPYHPGSCGAGAPSPGSSDVSTAGTGASRSSHSSD SGGSDVDLDPTDGKLFPSDGF RDCKKGD PKHGKRKRGRPRKLSKEYWDCLE GKKSKHAPRGTHLWEFIRDILIHPELNEGLMKWENRHEGVFKFLRSEAVAQLW GQKKKNSNMTYEKLSRAMRYYYKREILERVDGRRLVYKFGKNSSGWKEEEVL QSRN

Product Application Details	
<b>Applications</b>	Western Blot, ELISA, Chromatin Immunoprecipitation (ChIP)
<b>Recommended Dilutions</b>	Western Blot 1:1000 - 1:6000, ELISA Recommended starting concentration is 1 µg/mL. Please optimize the concentration based on your specific assay requirements., Chromatin Immunoprecipitation (ChIP) 5µg antibody for 10µg-15µg of Chromatin
<b>Application Notes</b>	CUT&Tag, 10 cells /1 ug

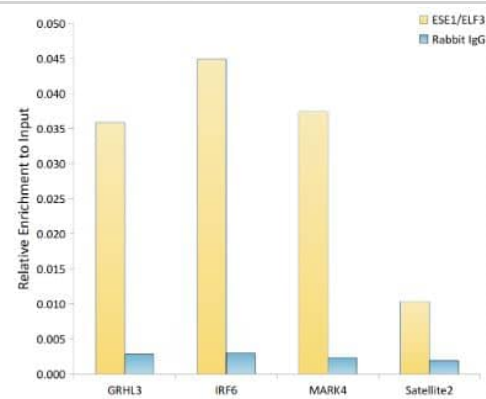


## Images

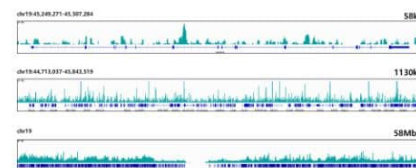
**Western Blot: ELF3/ESE-1 Antibody (7O2V4) [NBP3-16429]** - Western blot analysis of extracts of various cell lines, using ELF3/ESE-1 Rabbit mAb (NBP3-16429) at 1:1000 dilution. Secondary antibody: HRP Goat Anti-Rabbit IgG (H+L) at 1:10000 dilution. Lysates/proteins: 25ug per lane. Blocking buffer: 3% nonfat dry milk in TBST. Detection: ECL Basic Kit. Exposure time: 10s.



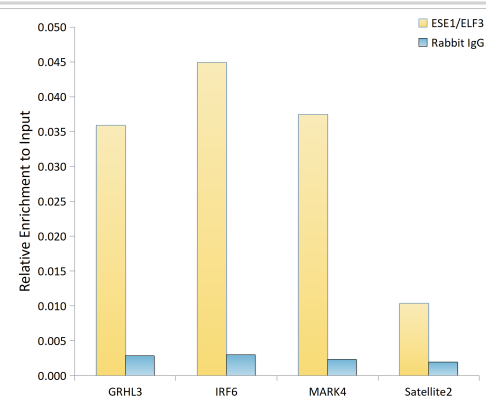
**Chromatin Immunoprecipitation: ELF3/ESE-1 Antibody (7O2V4) [NBP3-16429]** - Analysis of extracts of HepG2 cells, using ESE1/ELF3 antibody and rabbit IgG. The amount of immunoprecipitated DNA was checked by quantitative PCR. Histogram was constructed by the ratios of the immunoprecipitated DNA to the input.



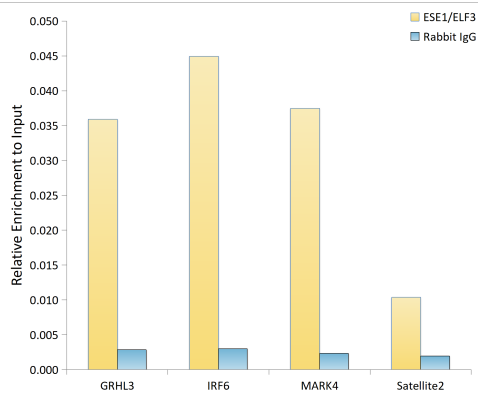
**Chip IP Sequencing: ELF3/ESE-1 Antibody (7O2V4) [NBP3-16429]** - CUT&Tag was performed using the CUT&Tag Assay Kit (pAG-Tn5) for Illumina from  $10^5$  HepG5 with 1 $\mu$ g ESE1 along with a Goat Anti-Rabbit IgG(H+L). The CUT&Tag results indicate the enrichment pattern of ESE1 in representative gene loci (MARK4), as shown in figure.



**Chromatin Immunoprecipitation: ELF3/ESE-1 Antibody (7O2V4) [NBP3-16429]** - Chromatin immunoprecipitation analysis of extracts of HepG2 cells, using ELF3/ESE-1 antibody and rabbit IgG. The amount of immunoprecipitated DNA was checked by quantitative PCR. Histogram was constructed by the ratios of the immunoprecipitated DNA to the input.



**Chromatin Immunoprecipitation: ELF3/ESE-1 Antibody (7O2V4)**  
[ELF3/ESE-1] - Chromatin immunoprecipitation analysis of extracts of HepG2 cells, using ELF3/ESE-1 antibody and rabbit IgG. The amount of immunoprecipitated DNA was checked by quantitative PCR. Histogram was constructed by the ratios of the immunoprecipitated DNA to the input.





### **Novus Biologicals USA**

10730 E. Briarwood Avenue  
Centennial, CO 80112  
USA  
Phone: 303.730.1950  
Toll Free: 1.888.506.6887  
Fax: 303.730.1966  
nb-customerservice@bio-techne.com

### **Bio-Techne Canada**

21 Canmotor Ave  
Toronto, ON M8Z 4E6  
Canada  
Phone: 905.827.6400  
Toll Free: 855.668.8722  
Fax: 905.827.6402  
canada.inquires@bio-techne.com

### **Bio-Techne Ltd**

19 Barton Lane  
Abingdon Science Park  
Abingdon, OX14 3NB, United Kingdom  
Phone: (44) (0) 1235 529449  
Free Phone: 0800 37 34 15  
Fax: (44) (0) 1235 533420  
info.EMEA@bio-techne.com

### **General Contact Information**

www.novusbio.com  
Technical Support: nb-technical@bio-techne.com  
Orders: nb-customerservice@bio-techne.com  
General: novus@novusbio.com

### **Products Related to NBP3-16429-100ul**

---

NBP2-33376H	Blue Marker Antibody (6F4-F6) [HRP]
HAF008	Goat anti-Rabbit IgG Secondary Antibody [HRP]
NB7160	Goat anti-Rabbit IgG (H+L) Secondary Antibody [HRP]
NBP2-24891	Rabbit IgG Isotype Control

---

### **Limitations**

This product is for research use only and is not approved for use in humans or in clinical diagnosis. Primary Antibodies are guaranteed for 1 year from date of receipt.

For more information on our 100% guarantee, please visit [www.novusbio.com/guarantee](http://www.novusbio.com/guarantee)

Earn gift cards/discounts by submitting a review: [www.novusbio.com/reviews/submit/NBP3-16429](http://www.novusbio.com/reviews/submit/NBP3-16429)

Earn gift cards/discounts by submitting a publication using this product:  
[www.novusbio.com/publications](http://www.novusbio.com/publications)

