

# Product Datasheet

## NuMA Antibody (6D4I4) NBP3-16411-100ul

Unit Size: 100 ul

Store at -20C. Avoid freeze-thaw cycles.

[www.novusbio.com](http://www.novusbio.com)



[technical@novusbio.com](mailto:technical@novusbio.com)

Protocols, Publications, Related Products, Reviews, Research Tools and Images at:  
[www.novusbio.com/NBP3-16411](http://www.novusbio.com/NBP3-16411)

Updated 9/9/2025 v.20.1

Earn rewards for product  
reviews and publications.

Submit a publication at [www.novusbio.com/publications](http://www.novusbio.com/publications)

Submit a review at [www.novusbio.com/reviews/destination/NBP3-16411](http://www.novusbio.com/reviews/destination/NBP3-16411)



**NBP3-16411-100ul**

NuMA Antibody (6D4I4)

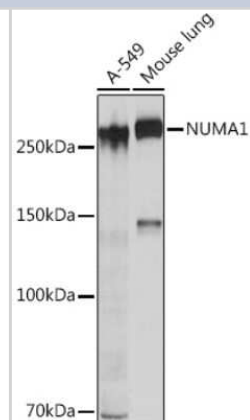
| Product Information  |   |
|----------------------|---|
| <b>Unit Size</b>     | 100 ul  |
| <b>Concentration</b> | Please see the vial label for concentration. If unlisted please contact technical services. |
| <b>Storage</b>       | Store at -20C. Avoid freeze-thaw cycles.  |
| <b>Clonality</b>     | Monoclonal  |
| <b>Clone</b>         | 6D4I4   |
| <b>Preservative</b>  | 0.02% Sodium Azide  |
| <b>Isotype</b>       | IgG   |
| <b>Purity</b>        | Affinity purified   |
| <b>Buffer</b>        | PBS (pH 7.3), 50% glycerol, 0.05% BSA   |

| Product Description |  |
|---------------------|--|
| <b>Description</b>  | Novus Biologicals Rabbit NuMA Antibody (6D4I4) (NBP3-16411) is a recombinant monoclonal antibody validated for use in IHC and WB. All Novus Biologicals antibodies are covered by our 100% guarantee.            |
| <b>Host</b>         | Rabbit   |
| <b>Gene ID</b>      | 4926   |
| <b>Gene Symbol</b>  | NUMA1  |
| <b>Species</b>      | Human, Mouse, Rat  |
| <b>Immunogen</b>    | A synthetic peptide corresponding to a sequence within amino acids 2000-2100 of human NuMA1 (Q14980).<br>TPESKKATSCFPRPMTPRDRHEGRKQSTTEAQKKAAPASTKQADRRQSMASF<br>ILNTPKKLGNLLRRGASKKALSASPNTSRSGTRRSPIATTTASAATA |

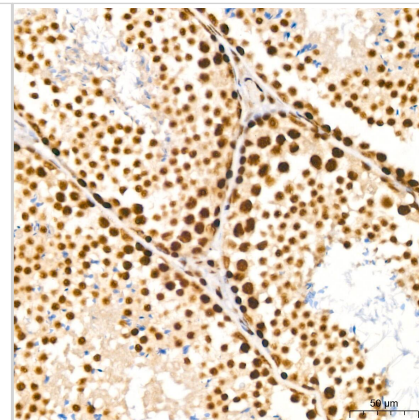
| Product Application Details  |   |
|------------------------------|---|
| <b>Applications</b>          | Western Blot, Immunohistochemistry-Paraffin, Immunohistochemistry                             |
| <b>Recommended Dilutions</b> | Western Blot 1:500 - 1:2000, Immunohistochemistry 1:50 - 1:200, Immunohistochemistry-Paraffin |

**Images**

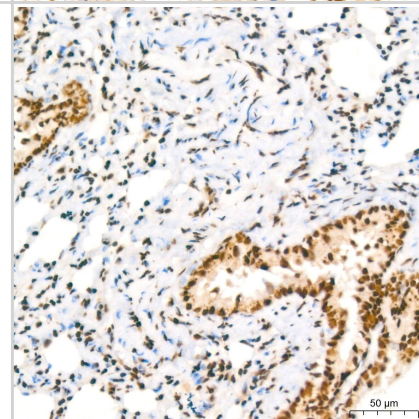
Western Blot: NuMA Antibody (6D4I4) [NBP3-16411] - Western blot analysis of extracts of various cell lines, using NuMA1 Rabbit mAb (NBP3-16411) at 1:1000 dilution. Secondary antibody: HRP Goat Anti-Rabbit IgG (H+L) at 1:10000 dilution. Lysates/proteins: 25ug per lane. Blocking buffer: 3% nonfat dry milk in TBST. Detection: ECL Basic Kit. Exposure time: 10s.



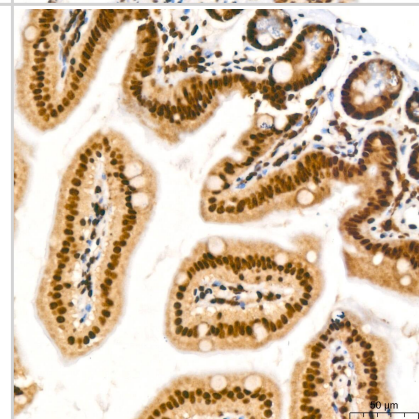
Immunohistochemistry: NuMA Antibody (6D4I4) [NBP3-16411] - Immunohistochemistry analysis of NuMA in paraffin-embedded mouse testis tissue using NuMA Rabbit mAb at a dilution of 1:200 (40x lens). High pressure antigen retrieval was performed with 0.01 M citrate buffer (pH 6.0) prior to IHC staining.



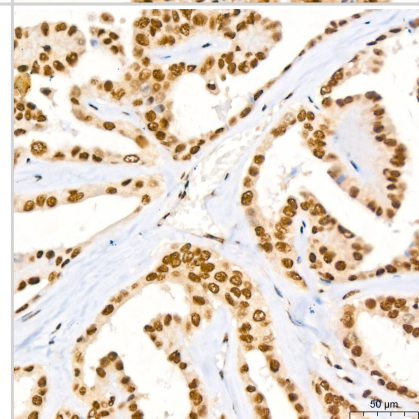
Immunohistochemistry: NuMA Antibody (6D4I4) [NBP3-16411] - Immunohistochemistry analysis of NuMA in paraffin-embedded rat lung tissue using NuMA Rabbit mAb at a dilution of 1:200 (40x lens). High pressure antigen retrieval was performed with 0.01 M citrate buffer (pH 6.0) prior to IHC staining.



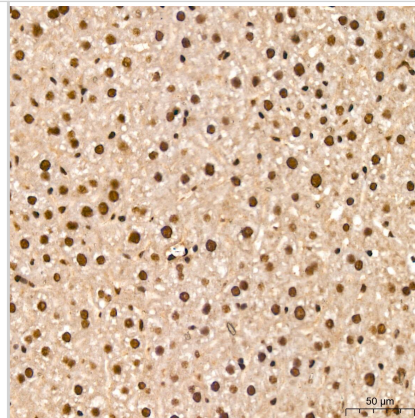
Immunohistochemistry: NuMA Antibody (6D4I4) [NBP3-16411] - Immunohistochemistry analysis of NuMA in paraffin-embedded mouse intestine tissue using NuMA Rabbit mAb at a dilution of 1:200 (40x lens). High pressure antigen retrieval was performed with 0.01 M citrate buffer (pH 6.0) prior to IHC staining.



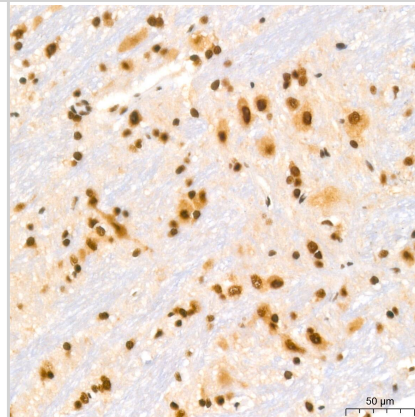
Immunohistochemistry: NuMA Antibody (6D4I4) [NBP3-16411] - Immunohistochemistry analysis of NuMA in paraffin-embedded human thyroid cancer tissue using NuMA Rabbit mAb at a dilution of 1:200 (40x lens). High pressure antigen retrieval was performed with 0.01 M citrate buffer (pH 6.0) prior to IHC staining.



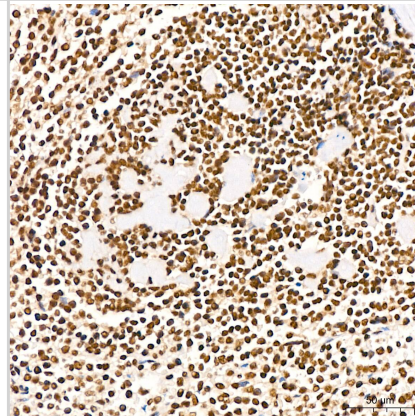
Immunohistochemistry: NuMA Antibody (6D4I4) [NBP3-16411] - Immunohistochemistry analysis of NuMA in paraffin-embedded mouse liver tissue using NuMA Rabbit mAb at a dilution of 1:200 (40x lens).High pressure antigen retrieval was performed with 0.01 M citrate buffer (pH 6.0) prior to IHC staining.



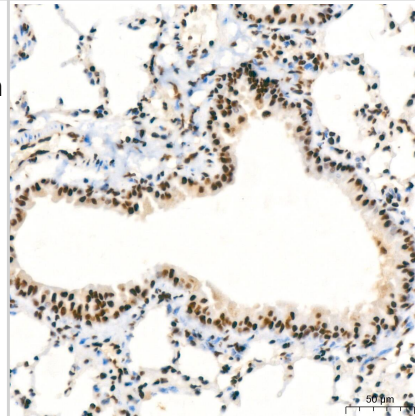
Immunohistochemistry: NuMA Antibody (6D4I4) [NBP3-16411] - Immunohistochemistry analysis of NuMA in paraffin-embedded rat brain tissue using NuMA Rabbit mAb at a dilution of 1:200 (40x lens).High pressure antigen retrieval was performed with 0.01 M citrate buffer (pH 6.0) prior to IHC staining.



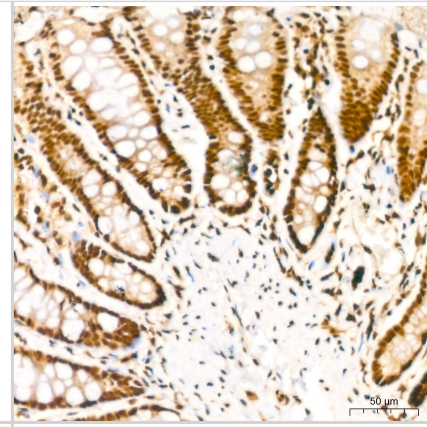
Immunohistochemistry: NuMA Antibody (6D4I4) [NBP3-16411] - Immunohistochemistry analysis of NuMA in paraffin-embedded human spleen tissue using NuMA Rabbit mAb at a dilution of 1:200 (40x lens).High pressure antigen retrieval was performed with 0.01 M citrate buffer (pH 6.0) prior to IHC staining.



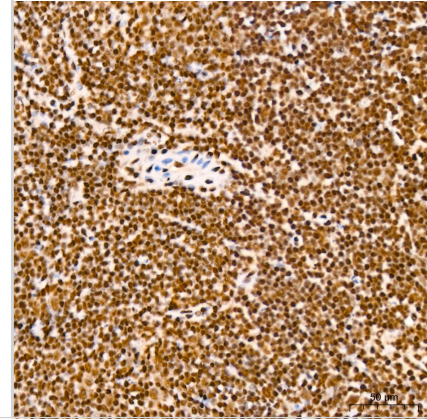
Immunohistochemistry: NuMA Antibody (6D4I4) [NBP3-16411] - Immunohistochemistry analysis of NuMA in paraffin-embedded mouse lung tissue using NuMA Rabbit mAb at a dilution of 1:200 (40x lens).High pressure antigen retrieval was performed with 0.01 M citrate buffer (pH 6.0) prior to IHC staining.



Immunohistochemistry: NuMA Antibody (6D4I4) [NBP3-16411] - Immunohistochemistry analysis of NuMA in paraffin-embedded rat colon tissue using NuMA Rabbit mAb at a dilution of 1:200 (40x lens). High pressure antigen retrieval was performed with 0.01 M citrate buffer (pH 6.0) prior to IHC staining.



Immunohistochemistry: NuMA Antibody (6D4I4) [NBP3-16411] - Immunohistochemistry analysis of NuMA in paraffin-embedded mouse spleen tissue using NuMA Rabbit mAb at a dilution of 1:200 (40x lens). High pressure antigen retrieval was performed with 0.01 M citrate buffer (pH 6.0) prior to IHC staining.





### **Novus Biologicals USA**

10730 E. Briarwood Avenue  
Centennial, CO 80112  
USA  
Phone: 303.730.1950  
Toll Free: 1.888.506.6887  
Fax: 303.730.1966  
nb-customerservice@bio-techne.com

### **Bio-Techne Canada**

21 Canmotor Ave  
Toronto, ON M8Z 4E6  
Canada  
Phone: 905.827.6400  
Toll Free: 855.668.8722  
Fax: 905.827.6402  
canada.inquires@bio-techne.com

### **Bio-Techne Ltd**

19 Barton Lane  
Abingdon Science Park  
Abingdon, OX14 3NB, United Kingdom  
Phone: (44) (0) 1235 529449  
Free Phone: 0800 37 34 15  
Fax: (44) (0) 1235 533420  
info.EMEA@bio-techne.com

### **General Contact Information**

www.novusbio.com  
Technical Support: nb-technical@bio-techne.com  
Orders: nb-customerservice@bio-techne.com  
General: novus@novusbio.com

### **Products Related to NBP3-16411-100ul**

---

|             |   |
|-------------|---|
| NBP2-33376H | Blue Marker Antibody (6F4-F6) [HRP]                 |
| HAF008      | Goat anti-Rabbit IgG Secondary Antibody [HRP]       |
| NB7160      | Goat anti-Rabbit IgG (H+L) Secondary Antibody [HRP] |
| NBP2-24891  | Rabbit IgG Isotype Control                          |

---

### **Limitations**

This product is for research use only and is not approved for use in humans or in clinical diagnosis. Primary Antibodies are guaranteed for 1 year from date of receipt.

For more information on our 100% guarantee, please visit [www.novusbio.com/guarantee](http://www.novusbio.com/guarantee)

Earn gift cards/discounts by submitting a review: [www.novusbio.com/reviews/submit/NBP3-16411](http://www.novusbio.com/reviews/submit/NBP3-16411)

Earn gift cards/discounts by submitting a publication using this product:  
[www.novusbio.com/publications](http://www.novusbio.com/publications)

