

Product Datasheet

Guanylyl Cyclase beta 1 Antibody (5O8D9) NBP3-16248-100ul

Unit Size: 100 ul

Store at -20C. Avoid freeze-thaw cycles.

www.novusbio.com



technical@novusbio.com

Publications: 1

Protocols, Publications, Related Products, Reviews, Research Tools and Images at:
www.novusbio.com/NBP3-16248

Updated 1/12/2026 v.20.1

Earn rewards for product
reviews and publications.

Submit a publication at www.novusbio.com/publications

Submit a review at www.novusbio.com/reviews/destination/NBP3-16248



NBP3-16248-100ul**Guanylyl Cyclase beta 1 Antibody (5O8D9)**

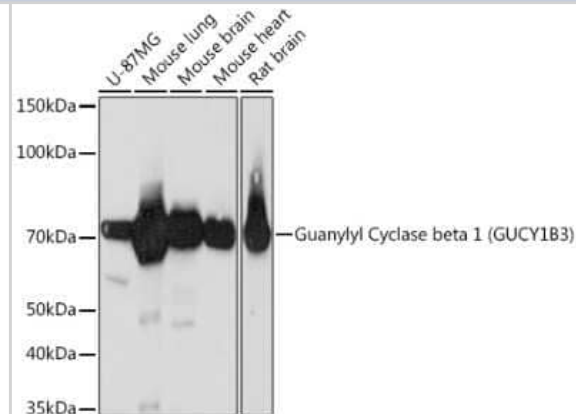
Product Information	
Unit Size	100 ul
Concentration	Please see the vial label for concentration. If unlisted please contact technical services.
Storage	Store at -20C. Avoid freeze-thaw cycles.
Clonality	Monoclonal
Clone	5O8D9
Preservative	0.02% Sodium Azide
Isotype	IgG
Purity	Affinity purified
Buffer	PBS (pH 7.3), 50% glycerol, 0.05% BSA
Target Molecular Weight	71 kDa

Product Description	
Description	Novus Biologicals Rabbit Guanylyl Cyclase beta 1 Antibody (5O8D9) (NBP3-16248) is a recombinant monoclonal antibody validated for use in IHC, WB, ICC/IF and IP. Anti-Guanylyl Cyclase beta 1 Antibody: Cited in 1 publication. All Novus Biologicals antibodies are covered by our 100% guarantee.
Host	Rabbit
Gene ID	2983
Gene Symbol	GUCY1B1
Species	Human, Mouse, Rat
Immunogen	A synthetic peptide corresponding to a sequence within amino acids 1-100 of human Guanylyl Cyclase beta 1 (Q02153). MYGFVNHALELLVIRNYGPEVWEDIKKEAQLDEEGQFLVRIIYDDSKTYDLVAA ASKVLNLNAGEILQMFGKMFVFCQESGYDTILRVLGSNVREFLQN

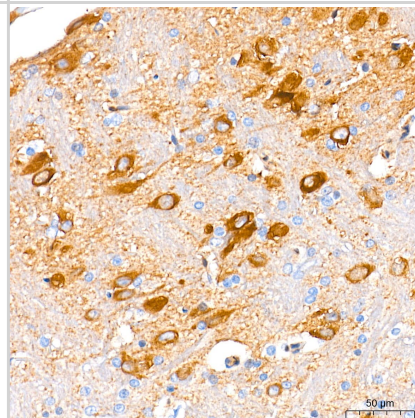
Product Application Details	
Applications	Western Blot, Immunohistochemistry-Paraffin, ELISA, Immunocytochemistry/Immunofluorescence, Immunohistochemistry
Recommended Dilutions	Western Blot 1:1000 - 1:6000, ELISA Recommended starting concentration is 1 µg/mL., Immunohistochemistry 1:200 - 1:800, Immunocytochemistry/Immunofluorescence 1:100 - 1:400, Immunohistochemistry-Paraffin 1:200 - 1:800

Images

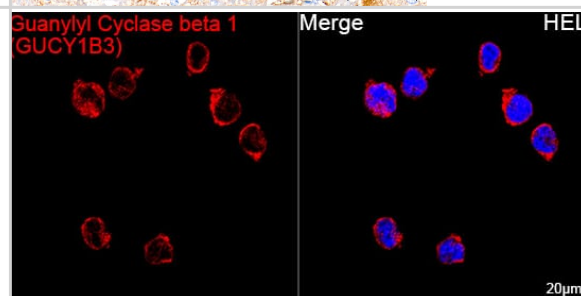
Western Blot: Guanylyl Cyclase beta 1 Antibody (5O8D9) [NBP3-16248]
 - Analysis of extracts of various cell lines, using Guanylyl Cyclase beta 1 (GUCY1B3) Rabbit mAb (NBP3-16248) at 1:1000 dilution. Secondary antibody: HRP Goat Anti-Rabbit IgG (H+L) at 1:10000 dilution. Lysates/proteins: 25ug per lane. Blocking buffer: 3% nonfat dry milk in TBST. Detection: ECL Basic Kit. Exposure time: 3min.



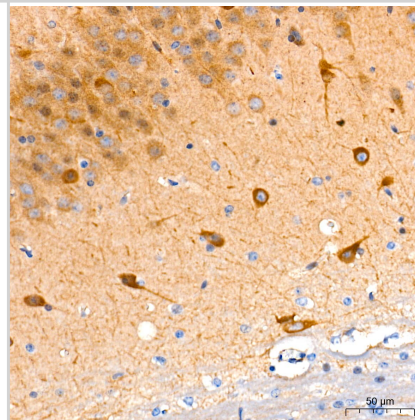
Immunohistochemistry: Guanylyl Cyclase beta 1 Antibody (5O8D9) [NBP3-16248] - Immunohistochemistry analysis of paraffin-embedded Rat brain tissue using Guanylyl Cyclase beta 1 Rabbit mAb at a dilution of 1:200 (40x lens). High pressure antigen retrieval performed with 0.01M Tris-EDTA Buffer (pH 9.0) prior to IHC staining.



Confocal imaging of HEL cells using Guanylyl Cyclase beta 1 (GUCY1B3) Rabbit mAb (dilution 1:200) followed by a further incubation with Cy3 Goat Anti-Rabbit IgG (H+L) (dilution 1:500) (Red). DAPI was used for nuclear staining (Blue). Objective: 100x.



Immunohistochemistry: Guanylyl Cyclase beta 1 Antibody (5O8D9) [NBP3-16248] - Immunohistochemistry analysis of paraffin-embedded Mouse brain tissue using Guanylyl Cyclase beta 1 Rabbit mAb at a dilution of 1:200 (40x lens). High pressure antigen retrieval performed with 0.01M Tris-EDTA Buffer (pH 9.0) prior to IHC staining.



Publications

Dai Y, Stuehr DJ BAY58-2667 Activates Different Soluble Guanylyl Cyclase Species by Distinct Mechanisms that Indicate Its Principal Target in Cells is the Heme-Free Soluble Guanylyl Cyclase-Heat Shock Protein 90 Complex
 Molecular pharmacology 2023-05-01 [PMID: 36868790] (IP, WB, Rat, Human)



Novus Biologicals USA

10730 E. Briarwood Avenue
Centennial, CO 80112
USA

Phone: 303.730.1950

Toll Free: 1.888.506.6887

Fax: 303.730.1966

nb-customerservice@bio-techne.com

Bio-Techne Canada

21 Canmotor Ave
Toronto, ON M8Z 4E6
Canada

Phone: 905.827.6400

Toll Free: 855.668.8722

Fax: 905.827.6402

canada.inquires@bio-techne.com

Bio-Techne Ltd

19 Barton Lane
Abingdon Science Park
Abingdon, OX14 3NB, United Kingdom

Phone: (44) (0) 1235 529449

Free Phone: 0800 37 34 15

Fax: (44) (0) 1235 533420

info.EMEA@bio-techne.com

General Contact Information

www.novusbio.com

Technical Support: nb-technical@bio-techne.com

Orders: nb-customerservice@bio-techne.com

General: novus@novusbio.com

Products Related to NBP3-16248-100ul

NBP2-33376H	Blue Marker Antibody (6F4-F6) [HRP]
HAF008	Goat anti-Rabbit IgG Secondary Antibody [HRP]
NB7160	Goat anti-Rabbit IgG (H+L) Secondary Antibody [HRP]
NBP2-24891	Rabbit IgG Isotype Control

Limitations

This product is for research use only and is not approved for use in humans or in clinical diagnosis. Primary Antibodies are guaranteed for 1 year from date of receipt.

For more information on our 100% guarantee, please visit www.novusbio.com/guarantee

Earn gift cards/discounts by submitting a review: www.novusbio.com/reviews/submit/NBP3-16248

Earn gift cards/discounts by submitting a publication using this product:

www.novusbio.com/publications

