

Product Datasheet

PIM1 Antibody (4C8D0)

NBP3-15863-100ul

Unit Size: 100 ul

Store at -20C. Avoid freeze-thaw cycles.

www.novusbio.com



technical@novusbio.com

Protocols, Publications, Related Products, Reviews, Research Tools and Images at:
www.novusbio.com/NBP3-15863

Updated 1/8/2026 v.20.1

Earn rewards for product
reviews and publications.

Submit a publication at www.novusbio.com/publications

Submit a review at www.novusbio.com/reviews/destination/NBP3-15863



NBP3-15863-100ul

PIM1 Antibody (4C8D0)

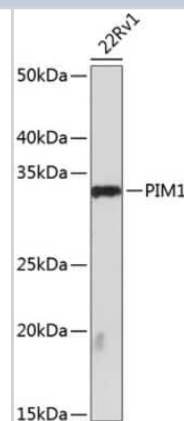
Product Information	
Unit Size	100 ul
Concentration	Please see the vial label for concentration. If unlisted please contact technical services.
Storage	Store at -20C. Avoid freeze-thaw cycles.
Clonality	Monoclonal
Clone	4C8D0
Preservative	0.02% Sodium Azide
Isotype	IgG
Purity	Affinity purified
Buffer	PBS (pH 7.3), 50% glycerol, 0.05% BSA
Target Molecular Weight	36 kDa

Product Description	
Description	Novus Biologicals Rabbit PIM1 Antibody (4C8D0) (NBP3-15863) is a recombinant monoclonal antibody validated for use in IHC and WB. All Novus Biologicals antibodies are covered by our 100% guarantee.
Host	Rabbit
Gene ID	5292
Gene Symbol	PIM1
Species	Human, Mouse, Rat
Immunogen	A synthetic peptide corresponding to a sequence within amino acids 1-100 of human PIM1 (P11309). MLLSKINSLAHLRAAPCNDLHATKLAPGKEKEPLESQYQVGP LLGSGGFGSVY SGIRVSDNLPVAIKHVEKDRISDWGELPNGTRVPM EVVLLKKVSSGF

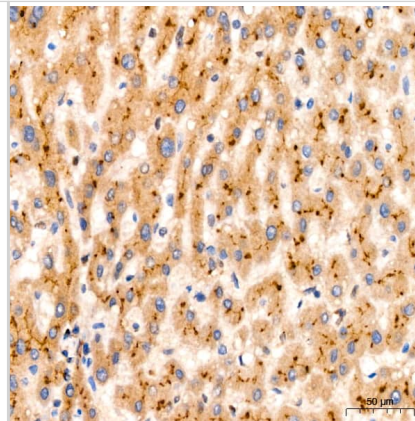
Product Application Details	
Applications	Western Blot, Immunohistochemistry-Paraffin, ELISA, Immunohistochemistry
Recommended Dilutions	Western Blot 1:1000 - 1:2000, ELISA Recommended starting concentration is 1 µg/mL., Immunohistochemistry 1:200 - 1:2000, Immunohistochemistry-Paraffin 1:200 - 1:2000

Images

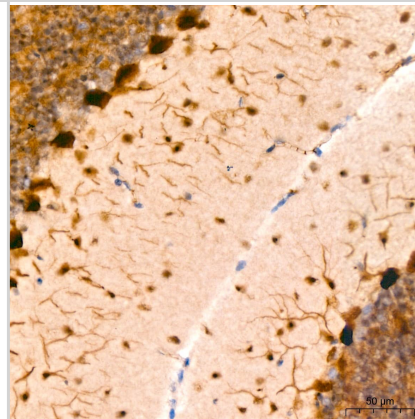
Western Blot: PIM1 Antibody (4C8D0) [NBP3-15863] - Western blot analysis of extracts of 22Rv1 cells, using PIM1 antibody (NBP3-15863) at 1:1000 dilution. Secondary antibody: HRP Goat Anti-Rabbit IgG (H+L) at 1:10000 dilution. Lysates/proteins: 25ug per lane. Blocking buffer: 3% nonfat dry milk in TBST. Detection: ECL Basic Kit. Exposure time: 90s.



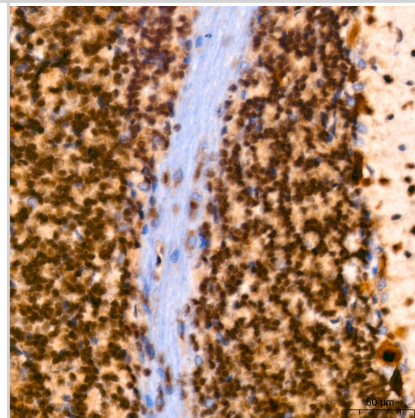
Immunohistochemistry: PIM1 Antibody (4C8D0) [PIM1] -
Immunohistochemistry analysis of paraffin-embedded Human liver using
PIM1 Rabbit mAb at dilution of 1:200 (40x lens). High pressure antigen
retrieval performed with 0.01M Tris/EDTA Buffer (pH 9.0) prior to IHC
staining.



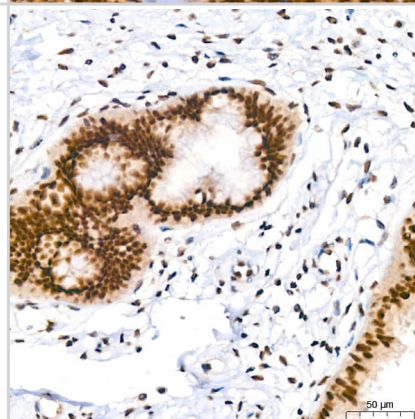
Immunohistochemistry: PIM1 Antibody (4C8D0) [PIM1] -
Immunohistochemistry analysis of paraffin-embedded Mouse brain using
PIM1 Rabbit mAb at dilution of 1:200 (40x lens). High pressure antigen
retrieval performed with 0.01M Tris/EDTA Buffer (pH 9.0) prior to IHC
staining.



Immunohistochemistry: PIM1 Antibody (4C8D0) [PIM1] -
Immunohistochemistry analysis of paraffin-embedded Rat brain using
PIM1 Rabbit mAb at dilution of 1:200 (40x lens). High pressure antigen
retrieval performed with 0.01M Tris/EDTA Buffer (pH 9.0) prior to IHC
staining.



Immunohistochemistry: PIM1 Antibody (4C8D0) [PIM1] -
Immunohistochemistry analysis of paraffin-embedded Human cervix
using PIM1 Rabbit mAb at dilution of 1:200 (40x lens). High pressure
antigen retrieval performed with 0.01M Tris/EDTA Buffer (pH 9.0) prior to
IHC staining.





Novus Biologicals USA

10730 E. Briarwood Avenue
Centennial, CO 80112
USA
Phone: 303.730.1950
Toll Free: 1.888.506.6887
Fax: 303.730.1966
nb-customerservice@bio-techne.com

Bio-Techne Canada

21 Canmotor Ave
Toronto, ON M8Z 4E6
Canada
Phone: 905.827.6400
Toll Free: 855.668.8722
Fax: 905.827.6402
canada.inquires@bio-techne.com

Bio-Techne Ltd

19 Barton Lane
Abingdon Science Park
Abingdon, OX14 3NB, United Kingdom
Phone: (44) (0) 1235 529449
Free Phone: 0800 37 34 15
Fax: (44) (0) 1235 533420
info.EMEA@bio-techne.com

General Contact Information

www.novusbio.com
Technical Support: nb-technical@bio-techne.com
Orders: nb-customerservice@bio-techne.com
General: novus@novusbio.com

Products Related to NBP3-15863-100ul

NBP2-33376H	Blue Marker Antibody (6F4-F6) [HRP]
HAF008	Goat anti-Rabbit IgG Secondary Antibody [HRP]
NB7160	Goat anti-Rabbit IgG (H+L) Secondary Antibody [HRP]
NBP2-24891	Rabbit IgG Isotype Control

Limitations

This product is for research use only and is not approved for use in humans or in clinical diagnosis. Primary Antibodies are guaranteed for 1 year from date of receipt.

For more information on our 100% guarantee, please visit www.novusbio.com/guarantee

Earn gift cards/discounts by submitting a review: www.novusbio.com/reviews/submit/NBP3-15863

Earn gift cards/discounts by submitting a publication using this product:
www.novusbio.com/publications

