

Product Datasheet

ATG5 Antibody (8L7X6)

NBP3-15854-100ul

Unit Size: 100 ul

Store at -20C. Avoid freeze-thaw cycles.

www.novusbio.com



technical@novusbio.com

Protocols, Publications, Related Products, Reviews, Research Tools and Images at:
www.novusbio.com/NBP3-15854

Updated 3/4/2026 v.20.1

Earn rewards for product
reviews and publications.

Submit a publication at www.novusbio.com/publications

Submit a review at www.novusbio.com/reviews/destination/NBP3-15854



NBP3-15854-100ul

ATG5 Antibody (8L7X6)

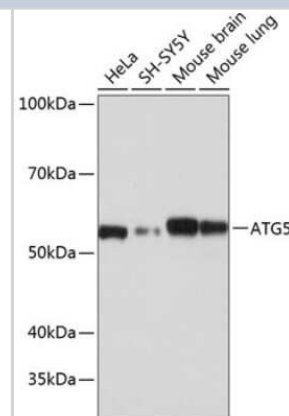
Product Information	
Unit Size	100 ul
Concentration	Please see the vial label for concentration. If unlisted please contact technical services.
Storage	Store at -20C. Avoid freeze-thaw cycles.
Clonality	Monoclonal
Clone	8L7X6
Preservative	0.09% Sodium Azide
Isotype	IgG
Purity	Affinity purified
Buffer	PBS (pH 7.3), 50% glycerol, 0.05% BSA
Target Molecular Weight	32 kDa

Product Description	
Host	Rabbit
Gene ID	9474
Gene Symbol	ATG5
Species	Human, Mouse, Rat
Immunogen	A synthetic peptide corresponding to a sequence within amino acids 1-100 of human ATG5 (Q9H1Y0). MTDDKDVLRDVWFGRIPTCFTLYQDEITEREAEPYYLLLPRVSYLTLVTDKVKK HFQKVMRQEDISEIWFYEGTPLKWHYPIGLLLFDLLASSSALPWN

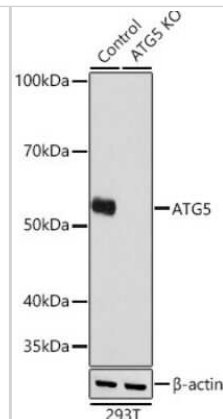
Product Application Details	
Applications	Western Blot, Immunohistochemistry-Paraffin, ELISA, Immunocytochemistry/Immunofluorescence, Immunohistochemistry, Immunoprecipitation, Knockout Validated
Recommended Dilutions	Western Blot 1:1000 - 1:6000, ELISA Recommended starting concentration is 1 ug/mL, Immunohistochemistry 1:200 - 1:2000, Immunocytochemistry/Immunofluorescence 1:200 - 1:400, Immunoprecipitation 0.5µg-4µg antibody for extracts of whole cells, Immunohistochemistry-Paraffin 1:200 - 1:2000, Knockout Validated

Images

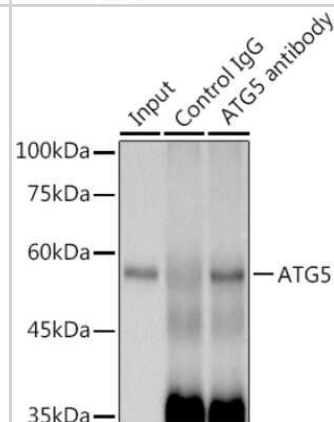
Western Blot: ATG5 Antibody (8L7X6) [NBP3-15854] - Western blot analysis of extracts of various cell lines, using ATG5 antibody (NBP3-15854) at 1:1000 dilution. Secondary antibody: HRP Goat Anti-Rabbit IgG (H+L) at 1:10000 dilution. Lysates/proteins: 25ug per lane. Blocking buffer: 3% nonfat dry milk in TBST. Detection: ECL Basic Kit. Exposure time: 1s.



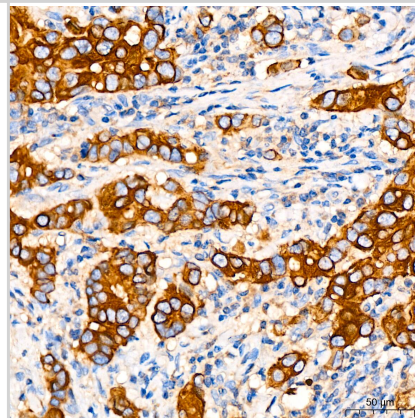
Western Blot: ATG5 Antibody (8L7X6) [NBP3-15854] - Western blot analysis of extracts from normal (control) and ATG5 knockout (KO) 293T cells, using ATG5 antibody (NBP3-15854) at 1:1000 dilution. Secondary antibody: HRP Goat Anti-Rabbit IgG (H+L) at 1:10000 dilution. Lysates/proteins: 25ug per lane. Blocking buffer: 3% nonfat dry milk in TBST. Detection: ECL Basic Kit. Exposure time: 1s.



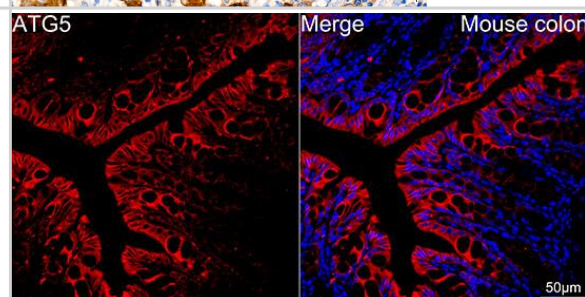
Immunoprecipitation: ATG5 Antibody (8L7X6) [NBP3-15854] - Immunoprecipitation analysis of 300ug extracts of 293T cells using 3ug ATG5 antibody (NBP3-15854). Western blot was performed from the immunoprecipitate using ATG5 (NBP3-15854) at a dilution of 1:1000.



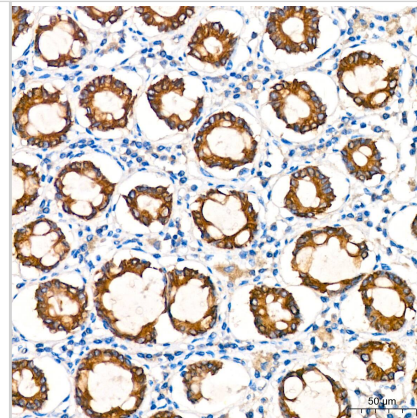
Immunohistochemistry: ATG5 Antibody (8L7X6) [ATG5] - Immunohistochemistry analysis of paraffin-embedded Human breast cancer tissue using [KO Validated] ATG5 Rabbit mAb at a dilution of 1:200 (40x lens). High pressure antigen retrieval performed with 0.01M Citrate Buffer (pH 6.0) prior to IHC staining.



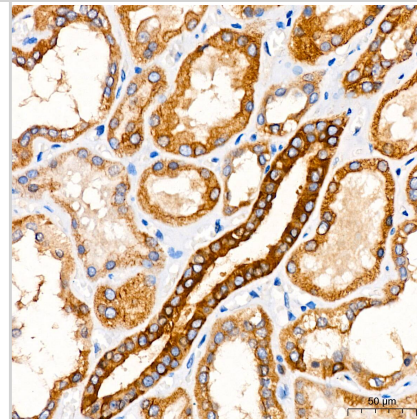
Immunocytochemistry/ Immunofluorescence: ATG5 Antibody (8L7X6) [ATG5] - Confocal imaging of paraffin-embedded Mouse colon tissue using [KO Validated] ATG5 Rabbit mAb followed by a further incubation with Cy3 Goat Anti-Rabbit IgG (H+L) . DAPI was used for nuclear staining (Blue). High pressure antigen retrieval performed with 0.01M Citrate Buffer (pH 6.0) prior to IF staining. Objective: 40x.



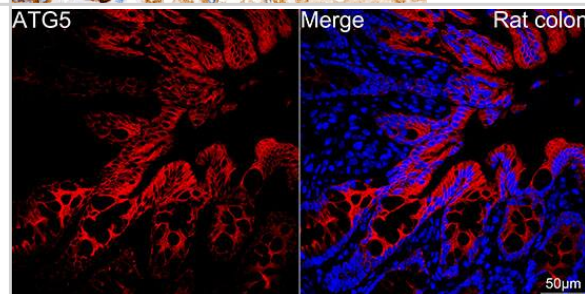
Immunohistochemistry: ATG5 Antibody (8L7X6) [ATG5] -
Immunohistochemistry analysis of paraffin-embedded Human colon tissue using [KO Validated] ATG5 Rabbit mAb at a dilution of 1:200 (40x lens). High pressure antigen retrieval performed with 0.01M Citrate Buffer (pH 6.0) prior to IHC staining.



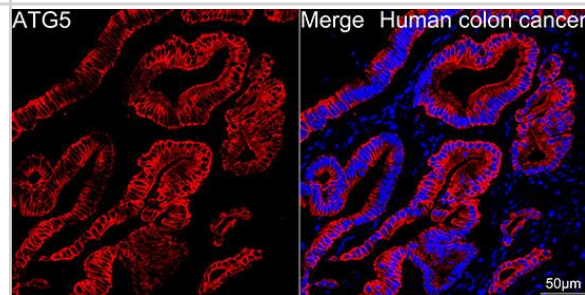
Immunohistochemistry: ATG5 Antibody (8L7X6) [ATG5] -
Immunohistochemistry analysis of paraffin-embedded Human kidney tissue using [KO Validated] ATG5 Rabbit mAb at a dilution of 1:200 (40x lens). High pressure antigen retrieval performed with 0.01M Citrate Buffer (pH 6.0) prior to IHC staining.



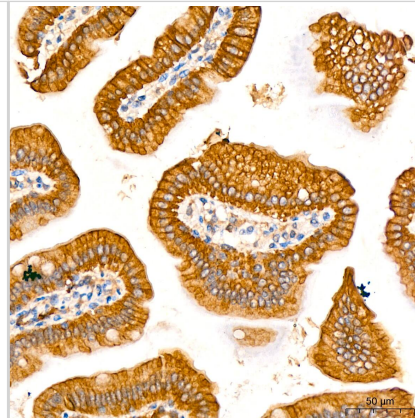
Immunocytochemistry/ Immunofluorescence: ATG5 Antibody (8L7X6) [ATG5] -
Confocal imaging of paraffin-embedded Rat colon tissue using [KO Validated] ATG5 Rabbit mAb followed by a further incubation with Cy3 Goat Anti-Rabbit IgG (H+L) . DAPI was used for nuclear staining (Blue). High pressure antigen retrieval performed with 0.01M Citrate Buffer (pH 6.0) prior to IF staining. Objective: 40x.



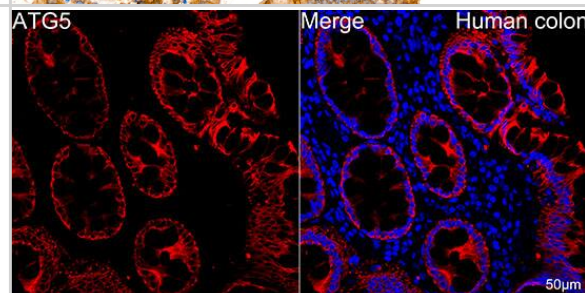
Immunocytochemistry/ Immunofluorescence: ATG5 Antibody (8L7X6) [ATG5] -
Confocal imaging of paraffin-embedded Human colon cancer tissue using [KO Validated] ATG5 Rabbit mAb followed by a further incubation with Cy3 Goat Anti-Rabbit IgG (H+L) . DAPI was used for nuclear staining (Blue). High pressure antigen retrieval performed with 0.01M Citrate Buffer (pH 6.0) prior to IF staining. Objective: 40x.



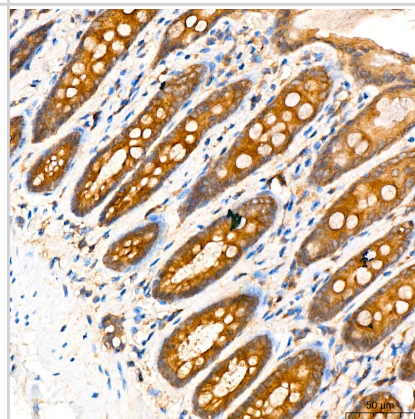
Immunohistochemistry: ATG5 Antibody (8L7X6) [ATG5] -
Immunohistochemistry analysis of paraffin-embedded Mouse colon
 tissue using [KO Validated] ATG5 Rabbit mAb at a dilution of 1:200 (40x
 lens). High pressure antigen retrieval performed with 0.01M Citrate
 Buffer (pH 6.0) prior to IHC staining.



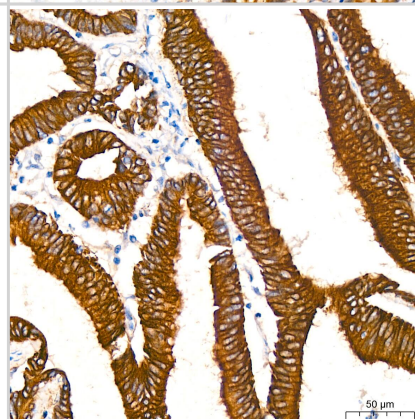
Immunocytochemistry/ Immunofluorescence: ATG5 Antibody (8L7X6)
[ATG5] - Confocal imaging of paraffin-embedded Human colon
 tissue using [KO Validated] ATG5 Rabbit mAb followed by a further incubation
 with Cy3 Goat Anti-Rabbit IgG (H+L) . DAPI was used for nuclear
 staining (Blue). High pressure antigen retrieval performed with 0.01M
 Citrate Buffer (pH 6.0) prior to IF staining. Objective: 40x.



Immunohistochemistry: ATG5 Antibody (8L7X6) [ATG5] -
Immunohistochemistry analysis of paraffin-embedded rat colon
 tissue using [KO Validated] ATG5 Rabbit mAb at a dilution of 1:200 (40x
 lens). High pressure antigen retrieval performed with 0.01M Citrate Buffer (pH
 6.0) prior to IHC staining.



Immunohistochemistry: ATG5 Antibody (8L7X6) [ATG5] -
Immunohistochemistry analysis of paraffin-embedded Human colon
 carcinoma tissue using [KO Validated] ATG5 Rabbit mAb at a dilution of
 1:200 (40x lens). High pressure antigen retrieval performed with 0.01M
 Citrate Buffer (pH 6.0) prior to IHC staining.





Novus Biologicals USA

10730 E. Briarwood Avenue
Centennial, CO 80112
USA
Phone: 303.730.1950
Toll Free: 1.888.506.6887
Fax: 303.730.1966
nb-customerservice@bio-techne.com

Bio-Techne Canada

21 Canmotor Ave
Toronto, ON M8Z 4E6
Canada
Phone: 905.827.6400
Toll Free: 855.668.8722
Fax: 905.827.6402
canada.inquires@bio-techne.com

Bio-Techne Ltd

19 Barton Lane
Abingdon Science Park
Abingdon, OX14 3NB, United Kingdom
Phone: (44) (0) 1235 529449
Free Phone: 0800 37 34 15
Fax: (44) (0) 1235 533420
info.EMEA@bio-techne.com

General Contact Information

www.novusbio.com
Technical Support: nb-technical@bio-techne.com
Orders: nb-customerservice@bio-techne.com
General: novus@novusbio.com

Products Related to NBP3-15854-100ul

HAF008	Goat anti-Rabbit IgG Secondary Antibody [HRP]
NB7160	Goat anti-Rabbit IgG (H+L) Secondary Antibody [HRP]
NBP2-24891	Rabbit IgG Isotype Control
NB110-53818PEP	ATG5 Antibody Blocking Peptide

Limitations

This product is for research use only and is not approved for use in humans or in clinical diagnosis. Primary Antibodies are guaranteed for 1 year from date of receipt.

For more information on our 100% guarantee, please visit www.novusbio.com/guarantee

Earn gift cards/discounts by submitting a review: www.novusbio.com/reviews/submit/NBP3-15854

Earn gift cards/discounts by submitting a publication using this product:
www.novusbio.com/publications

