

Product Datasheet

beta-Catenin Antibody (6A3P2) NBP3-15842-100ul

Unit Size: 100 ul

Store at -20C. Avoid freeze-thaw cycles.

www.novusbio.com



technical@novusbio.com

Protocols, Publications, Related Products, Reviews, Research Tools and Images at:
www.novusbio.com/NBP3-15842

Updated 3/4/2026 v.20.1

Earn rewards for product
reviews and publications.

Submit a publication at www.novusbio.com/publications

Submit a review at www.novusbio.com/reviews/destination/NBP3-15842



NBP3-15842-100ul

beta-Catenin Antibody (6A3P2)

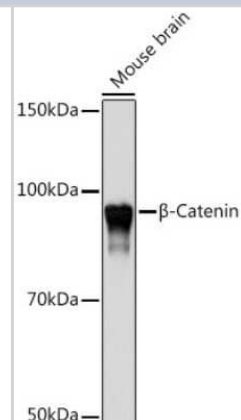
| Product Information | |
|-------------------------|---|
| Unit Size | 100 ul |
| Concentration | Please see the vial label for concentration. If unlisted please contact technical services. |
| Storage | Store at -20C. Avoid freeze-thaw cycles. |
| Clonality | Monoclonal |
| Clone | 6A3P2 |
| Preservative | 0.02% Sodium Azide |
| Isotype | IgG |
| Purity | Affinity purified |
| Buffer | PBS (pH 7.3), 50% glycerol, 0.05% BSA |
| Target Molecular Weight | 92 kDa |

| Product Description | |
|---------------------|---|
| Host | Rabbit |
| Gene ID | 1499 |
| Gene Symbol | CTNNB1 |
| Species | Human, Mouse, Rat |
| Immunogen | A synthetic peptide corresponding to a sequence within amino acids 1-100 of human beta Catenin (P35222). MATQADLMELDMAMEPDRKAAVSHWQQQSYLDSGIHSGATTTAPSLSGKGN PEEEDVDTSQVLYEWEQGFQSFTQEQVADIDGQYAMTRAQRVRAAMFP |

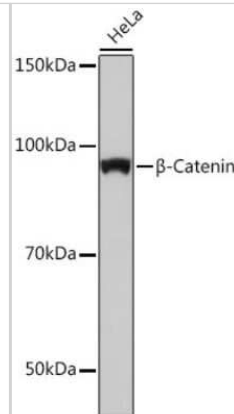
| Product Application Details | |
|-----------------------------|---|
| Applications | Western Blot, Immunohistochemistry-Paraffin, Immunocytochemistry/ Immunofluorescence, Immunohistochemistry, Immunoprecipitation, Knockout Validated |
| Recommended Dilutions | Western Blot 1:500 - 1:1000, Immunohistochemistry 1:50 - 1:200, Immunocytochemistry/ Immunofluorescence 1:50 - 1:200, Immunoprecipitation 1:500 - 1:1000, Immunohistochemistry-Paraffin, Knockout Validated |

Images

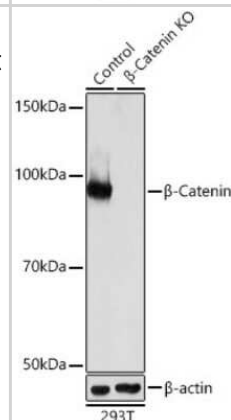
Western Blot: beta-Catenin Antibody (9L6X0) [NBP3-15842] - Western blot analysis of extracts of Mouse brain, using beta-Catenin antibody (NBP3-15842) at 1:1000 dilution. Secondary antibody: HRP Goat Anti-Rabbit IgG (H+L) at 1:10000 dilution. Lysates/proteins: 25ug per lane. Blocking buffer: 3% nonfat dry milk in TBST. Detection: ECL Basic Kit. Exposure time: 10s.



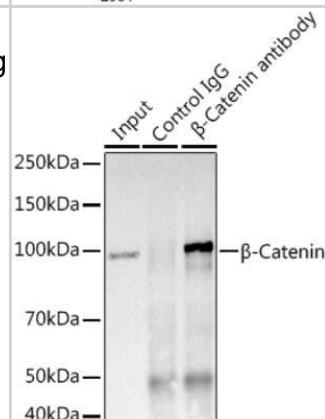
Western Blot: beta-Catenin Antibody (9L6X0) [NBP3-15842] - Western blot analysis of extracts of HeLa cells, using beta-Catenin antibody (NBP3-15842) at 1:1000 dilution. Secondary antibody: HRP Goat Anti-Rabbit IgG (H+L) at 1:10000 dilution. Lysates/proteins: 25ug per lane. Blocking buffer: 3% nonfat dry milk in TBST. Detection: ECL Basic Kit. Exposure time: 10s.



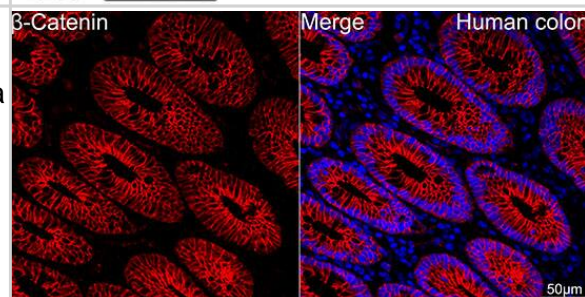
Western Blot: beta-Catenin Antibody (9L6X0) [NBP3-15842] - Western blot analysis of extracts from normal (control) and beta-Catenin knockout (KO) 293T cells, using beta-Catenin antibody (NBP3-15842) at 1:1000 dilution. Secondary antibody: HRP Goat Anti-Rabbit IgG (H+L) at 1:10000 dilution. Lysates/proteins: 25ug per lane. Blocking buffer: 3% nonfat dry milk in TBST. Detection: ECL Basic Kit. Exposure time: 10s.



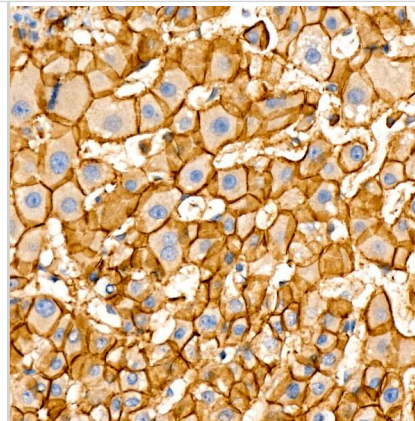
Immunoprecipitation: beta-Catenin Antibody (9L6X0) [NBP3-15842] - Immunoprecipitation analysis of 600ug extracts of Mouse brain using 3ug beta-Catenin antibody (NBP3-15842). Western blot was performed from the immunoprecipitate using beta-Catenin (NBP3-15842) at a dilution of 1:1000.



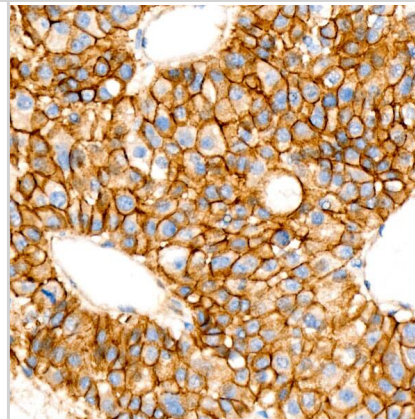
Immunocytochemistry/ Immunofluorescence: beta-Catenin Antibody (6A3P2) [beta-Catenin] - Confocal imaging of paraffin-embedded Human colon tissue using [KO Validated] beta-Catenin Rabbit mAb followed by a further incubation with Cy3 Goat Anti-Rabbit IgG (H+L) . DAPI was used for nuclear staining (Blue). High pressure antigen retrieval performed with 0.01M Citrate Buffer (pH 6.0) prior to IF staining. Objective: 40x.



Immunohistochemistry: beta-Catenin Antibody (6A3P2) [beta-Catenin] - Immunohistochemistry analysis of paraffin-embedded Human liver using [KO Validated] beta-Catenin Rabbit mAb at dilution of 1:100 (40x lens). High pressure antigen retrieval performed with 0.01M Citrate Bufferr (pH 6.0) prior to IHC staining.



Immunohistochemistry: beta-Catenin Antibody (6A3P2) [beta-Catenin] - Immunohistochemistry analysis of paraffin-embedded Human liver cancer using [KO Validated] beta-Catenin Rabbit mAb at dilution of 1:100 (40x lens). High pressure antigen retrieval performed with 0.01M Citrate Bufferr (pH 6.0) prior to IHC staining.



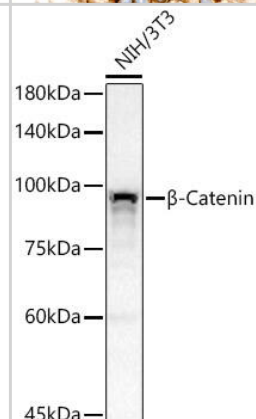
Western Blot: beta-Catenin Antibody (6A3P2) [beta-Catenin] - Western blot analysis of lysates from NIH/3T3 cells, using [KO Validated] beta-Catenin Rabbit mAb at 1:1000 dilution.

Lysates/proteins: 25ug per lane.

Blocking buffer: 3% nonfat dry milk in TBST.

Detection: ECL Basic Kit .

Exposure time: 30s.



Western Blot: beta-Catenin Antibody (6A3P2) [beta-Catenin] - Western blot analysis of lysates from wild type(WT) and beta-Catenin knockout (KO) 293T(KO) cells, using [KO Validated] beta-Catenin Rabbit mAb at 1:1000 dilution.

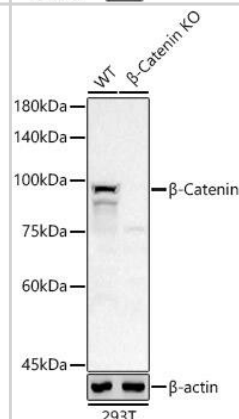
Secondary antibody: HRP-conjugated Goat anti-Rabbit IgG (H+L) at 1:10000 dilution.

Lysates/proteins: 25ug per lane.

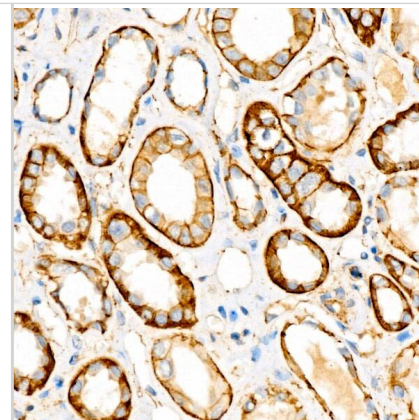
Blocking buffer: 3% nonfat dry milk in TBST.

Detection: ECL Basic Kit .

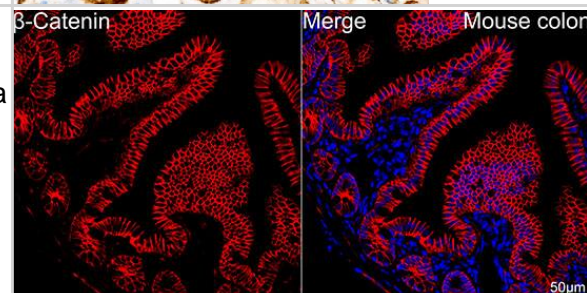
Exposure time: 30s.



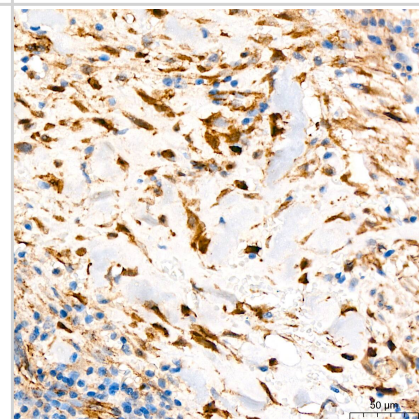
Immunohistochemistry: beta-Catenin Antibody (6A3P2) [beta-Catenin] - Immunohistochemistry analysis of paraffin-embedded Human kidney using [KO Validated] beta-Catenin Rabbit mAb at dilution of 1:100 (40x lens). High pressure antigen retrieval performed with 0.01M Citrate Bufferr (pH 6.0) prior to IHC staining.



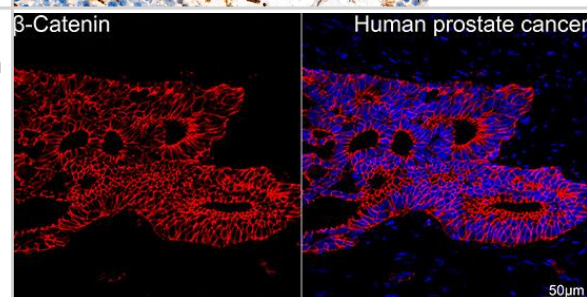
Immunocytochemistry/ Immunofluorescence: beta-Catenin Antibody (6A3P2) [beta-Catenin] - Confocal imaging of paraffin-embedded Mouse colon tissue using [KO Validated] beta-Catenin Rabbit mAb followed by a further incubation with Cy3 Goat Anti-Rabbit IgG (H+L) . DAPI was used for nuclear staining (Blue). High pressure antigen retrieval performed with 0.01M Citrate Buffer (pH 6.0) prior to IF staining. Objective: 40x.



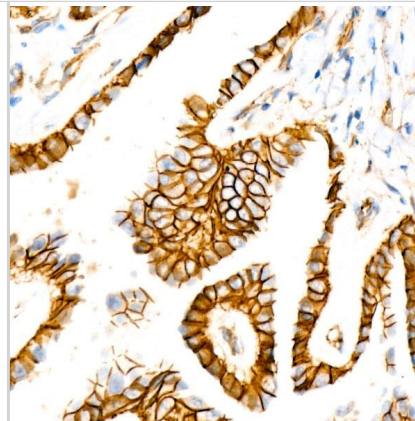
Immunohistochemistry: beta-Catenin Antibody (6A3P2) [beta-Catenin] - Immunohistochemistry analysis of paraffin-embedded Human solitary fibrous tumor tissue using [KO Validated] beta-Catenin Rabbit mAb at a dilution of 1:200 (40x lens). High pressure antigen retrieval was performed with 0.01 M Tris-EDTA buffer (pH 9.0) prior to IHC staining.



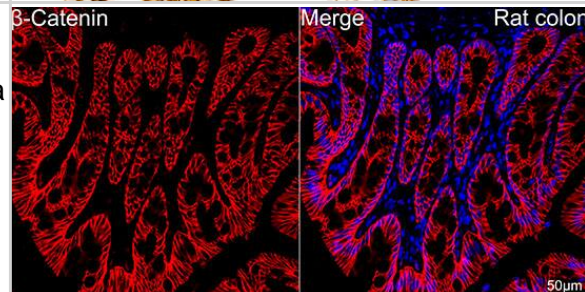
Immunocytochemistry/ Immunofluorescence: beta-Catenin Antibody (6A3P2) [beta-Catenin] - Confocal imaging of paraffin-embedded Human prostate cancer tissue using [KO Validated] beta-Catenin Rabbit mAb followed by a further incubation with Cy3 Goat Anti-Rabbit IgG (H+L) . DAPI was used for nuclear staining (Blue). High pressure antigen retrieval performed with 0.01M Citrate Buffer (pH 6.0) prior to IF staining. Objective: 40x.



Immunohistochemistry: beta-Catenin Antibody (6A3P2) [beta-Catenin] - Immunohistochemistry analysis of paraffin-embedded Human thyroid cancer using [KO Validated] beta-Catenin Rabbit mAb at dilution of 1:100 (40x lens). High pressure antigen retrieval performed with 0.01M Citrate Bufferr (pH 6.0) prior to IHC staining.



Immunocytochemistry/ Immunofluorescence: beta-Catenin Antibody (6A3P2) [beta-Catenin] - Confocal imaging of paraffin-embedded Rat colon tissue using [KO Validated] beta-Catenin Rabbit mAb followed by a further incubation with Cy3 Goat Anti-Rabbit IgG (H+L) . DAPI was used for nuclear staining (Blue). High pressure antigen retrieval performed with 0.01M Citrate Buffer (pH 6.0) prior to IF staining. Objective: 40x.





Novus Biologicals USA

10730 E. Briarwood Avenue
Centennial, CO 80112
USA
Phone: 303.730.1950
Toll Free: 1.888.506.6887
Fax: 303.730.1966
nb-customerservice@bio-techne.com

Bio-Techne Canada

21 Canmotor Ave
Toronto, ON M8Z 4E6
Canada
Phone: 905.827.6400
Toll Free: 855.668.8722
Fax: 905.827.6402
canada.inquires@bio-techne.com

Bio-Techne Ltd

19 Barton Lane
Abingdon Science Park
Abingdon, OX14 3NB, United Kingdom
Phone: (44) (0) 1235 529449
Free Phone: 0800 37 34 15
Fax: (44) (0) 1235 533420
info.EMEA@bio-techne.com

General Contact Information

www.novusbio.com
Technical Support: nb-technical@bio-techne.com
Orders: nb-customerservice@bio-techne.com
General: novus@novusbio.com

Products Related to NBP3-15842-100ul

| | |
|---------------|---|
| HAF008 | Goat anti-Rabbit IgG Secondary Antibody [HRP] |
| NB7160 | Goat anti-Rabbit IgG (H+L) Secondary Antibody [HRP] |
| NBP2-24891 | Rabbit IgG Isotype Control |
| NBP2-61628PEP | beta-Catenin Recombinant Protein Antigen |

Limitations

This product is for research use only and is not approved for use in humans or in clinical diagnosis. Primary Antibodies are guaranteed for 1 year from date of receipt.

For more information on our 100% guarantee, please visit www.novusbio.com/guarantee

Earn gift cards/discounts by submitting a review: www.novusbio.com/reviews/submit/NBP3-15842

Earn gift cards/discounts by submitting a publication using this product:
www.novusbio.com/publications

