

Product Datasheet

SP1 Antibody (5I3A8)

NBP3-15837-100ul

Unit Size: 100 ul

Store at -20C. Avoid freeze-thaw cycles.

www.novusbio.com



technical@novusbio.com

Protocols, Publications, Related Products, Reviews, Research Tools and Images at:
www.novusbio.com/NBP3-15837

Updated 9/9/2025 v.20.1

Earn rewards for product reviews and publications.

Submit a publication at www.novusbio.com/publications

Submit a review at www.novusbio.com/reviews/destination/NBP3-15837



NBP3-15837-100ul

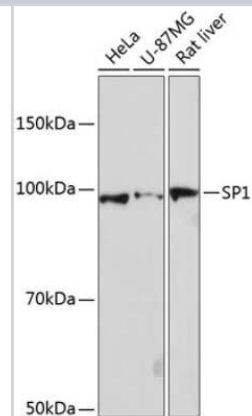
SP1 Antibody (5I3A8)

Product Information	
Unit Size	100 ul
Concentration	Please see the vial label for concentration. If unlisted please contact technical services.
Storage	Store at -20C. Avoid freeze-thaw cycles.
Clonality	Monoclonal
Clone	5I3A8
Preservative	0.02% Sodium Azide
Isotype	IgG
Purity	Affinity purified
Buffer	PBS (pH 7.3), 50% glycerol, 0.05% BSA
Target Molecular Weight	81 kDa
Product Description	
Description	Novus Biologicals Rabbit SP1 Antibody (5I3A8) (NBP3-15837) is a recombinant monoclonal antibody validated for use in IHC, WB, ELISA, ICC/IF and ChIP. All Novus Biologicals antibodies are covered by our 100% guarantee.
Host	Rabbit
Gene ID	6667
Gene Symbol	SP1
Species	Human, Mouse, Rat
Immunogen	A synthetic peptide corresponding to a sequence within amino acids 500-600 of human SP1 (P08047). TTLTPIASAASIPAGTVTVNAAQLSSMPGLQTINLSALGTSGIQVHPIQGLPLAIA NAPGDHGAQLGLHGAGGDGIHDDTAGGEEGENSPDAQPQAGRTR
Product Application Details	
Applications	Western Blot, Immunohistochemistry-Paraffin, ELISA, Immunocytochemistry/Immunofluorescence, Immunohistochemistry, Chromatin Immunoprecipitation (ChIP)
Recommended Dilutions	Western Blot 1:1000 - 1:2000, ELISA Recommended starting concentration is 1 µg/mL, Immunohistochemistry 1:200 - 1:2000, Immunocytochemistry/Immunofluorescence 1:50 - 1:200, Immunohistochemistry-Paraffin 1:200 - 1:2000, Chromatin Immunoprecipitation (ChIP) 5µg antibody for 10µg-15µg of Chromatin

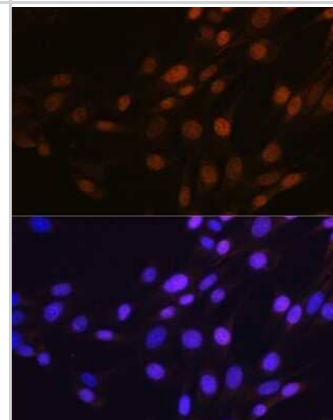


Images

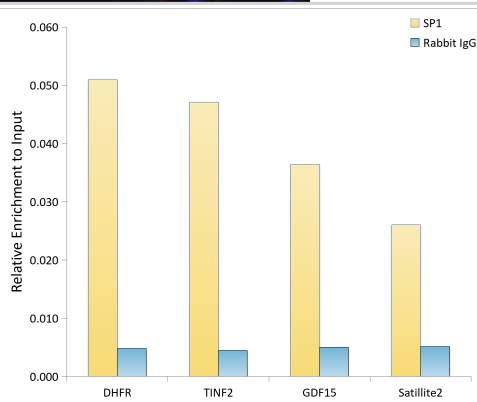
Western Blot: SP1 Antibody (5I3A8) [NBP3-15837] - Western blot analysis of extracts of various cell lines, using SP1 antibody (NBP3-15837) at 1:1000 dilution. Secondary antibody: HRP Goat Anti-Rabbit IgG (H+L) at 1:10000 dilution. Lysates/proteins: 25ug per lane. Blocking buffer: 3% nonfat dry milk in TBST. Detection: ECL Basic Kit. Exposure time: 90s.



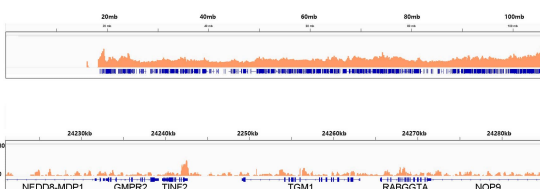
Immunocytochemistry/Immunofluorescence: SP1 Antibody (5I3A8) [NBP3-15837] - Immunofluorescence analysis of NIH-3T3 cells using SP1 antibody (NBP3-15837). Blue: DAPI for nuclear staining.



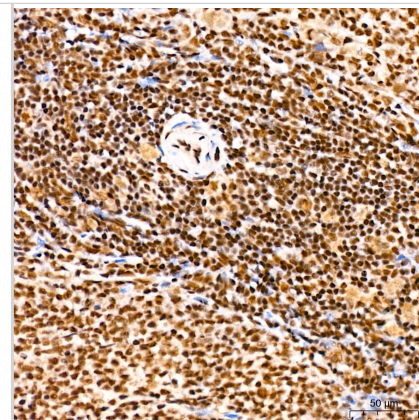
Chromatin Immunoprecipitation: SP1 Antibody (5I3A8) [SP1] - Chromatin immunoprecipitation analysis of extracts of 293T cells, using SP1 antibody and rabbit IgG. The amount of immunoprecipitated DNA was checked by quantitative PCR. Histogram was constructed by the ratios of the immunoprecipitated DNA to the input.



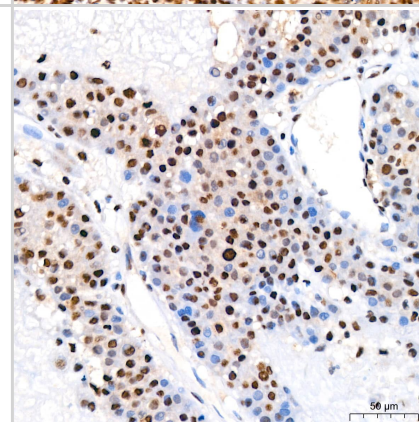
Chromatin Immunoprecipitation: SP1 Antibody (5I3A8) [SP1] - Chromatin immunoprecipitation was performed with 25 ug of cross-linked chromatin from 293T cells using 5 ug of SP1 Rabbit mAb. DNA libraries were prepared using Scale ssDNA-seq Lib Prep Kit for Illumina V2. The ChIP sequencing results indicate the enrichment pattern of SP1 across chromosome 14 (upper panel) and the genomic region encompassing TINF2, a representative gene enriched in SP1 (lower panel).



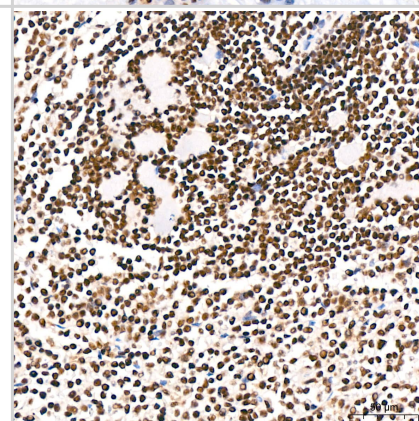
Immunohistochemistry: SP1 Antibody (5I3A8) [SP1] - Immunohistochemistry analysis of paraffin-embedded Rat spleen tissue using SP1 Rabbit mAb at a dilution of 1:200 (40x lens). High pressure antigen retrieval performed with 0.01M Citrate Bufferr (pH 6.0) prior to IHC staining.



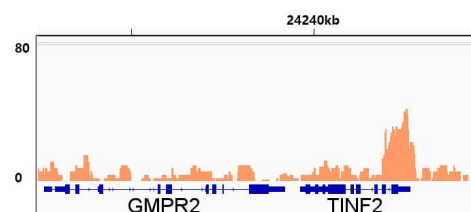
Immunohistochemistry: SP1 Antibody (5I3A8) [SP1] - Immunohistochemistry analysis of paraffin-embedded Human liver cancer tissue using SP1 Rabbit mAb at a dilution of 1:200 (40x lens). High pressure antigen retrieval performed with 0.01M Citrate Bufferr (pH 6.0) prior to IHC staining.



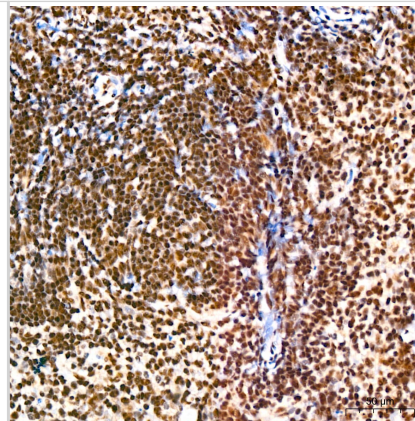
Immunohistochemistry: SP1 Antibody (5I3A8) [SP1] - Immunohistochemistry analysis of paraffin-embedded Human spleen tissue using SP1 Rabbit mAb at a dilution of 1:200 (40x lens). High pressure antigen retrieval performed with 0.01M Citrate Bufferr (pH 6.0) prior to IHC staining.



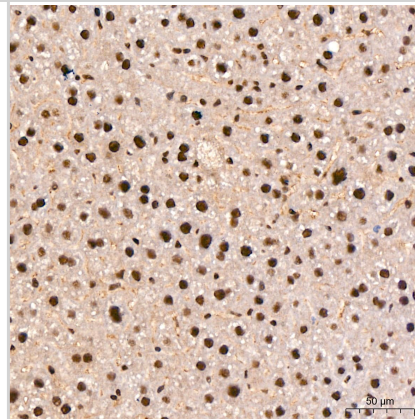
Chromatin Immunoprecipitation: SP1 Antibody (5I3A8) [SP1] - Chromatin immunoprecipitation was performed with 25 ug of cross-linked chromatin from 293T cells using 5 ug of SP1 Rabbit mAb . DNA libraries were prepared using Scale ssDNA-seq Lib Prep Kit for Illumina V2 . The ChIP sequencing results indicate the enrichment pattern of SP1 in the representative genomic region surrounding TINF2 gene.



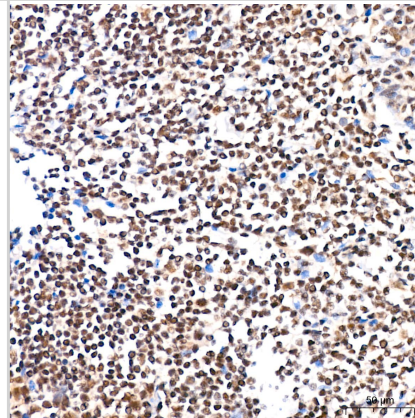
Immunohistochemistry: SP1 Antibody (5I3A8) [SP1] -
 Immunohistochemistry analysis of paraffin-embedded Mouse spleen tissue using SP1 Rabbit mAb at a dilution of 1:200 (40x lens). High pressure antigen retrieval performed with 0.01M Citrate Bufferr (pH 6.0) prior to IHC staining.



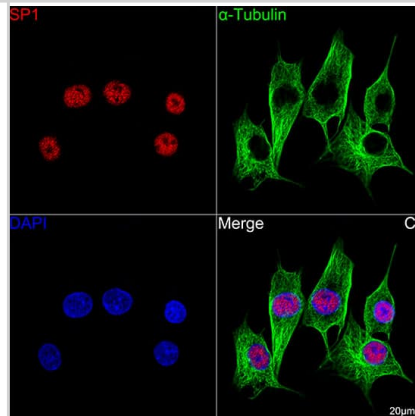
Immunohistochemistry: SP1 Antibody (5I3A8) [SP1] -
 Immunohistochemistry analysis of paraffin-embedded Mouse liver tissue using SP1 Rabbit mAb at a dilution of 1:200 (40x lens). High pressure antigen retrieval performed with 0.01M Citrate Bufferr (pH 6.0) prior to IHC staining.



Immunohistochemistry: SP1 Antibody (5I3A8) [SP1] -
 Immunohistochemistry analysis of paraffin-embedded Human tonsil tissue using SP1 Rabbit mAb at a dilution of 1:200 (40x lens). High pressure antigen retrieval performed with 0.01M Citrate Bufferr (pH 6.0) prior to IHC staining.



Immunocytochemistry/ Immunofluorescence: SP1 Antibody (5I3A8) [SP1] -
 Confocal imaging of C6 cells using SP1 Rabbit mAb . The cells were counterstained with alpha-Tubulin Mouse mAb (Green). DAPI was used for nuclear staining (blue). Objective: 100x.





Novus Biologicals USA

10730 E. Briarwood Avenue
Centennial, CO 80112
USA
Phone: 303.730.1950
Toll Free: 1.888.506.6887
Fax: 303.730.1966
nb-customerservice@bio-techne.com

Bio-Techne Canada

21 Canmotor Ave
Toronto, ON M8Z 4E6
Canada
Phone: 905.827.6400
Toll Free: 855.668.8722
Fax: 905.827.6402
canada.inquires@bio-techne.com

Bio-Techne Ltd

19 Barton Lane
Abingdon Science Park
Abingdon, OX14 3NB, United Kingdom
Phone: (44) (0) 1235 529449
Free Phone: 0800 37 34 15
Fax: (44) (0) 1235 533420
info.EMEA@bio-techne.com

General Contact Information

www.novusbio.com
Technical Support: nb-technical@bio-techne.com
Orders: nb-customerservice@bio-techne.com
General: novus@novusbio.com

Products Related to NBP3-15837-100ul

NBP2-33376H	Blue Marker Antibody (6F4-F6) [HRP]
HAF008	Goat anti-Rabbit IgG Secondary Antibody [HRP]
NB7160	Goat anti-Rabbit IgG (H+L) Secondary Antibody [HRP]
NBP2-24891	Rabbit IgG Isotype Control

Limitations

This product is for research use only and is not approved for use in humans or in clinical diagnosis. Primary Antibodies are guaranteed for 1 year from date of receipt.

For more information on our 100% guarantee, please visit www.novusbio.com/guarantee

Earn gift cards/discounts by submitting a review: www.novusbio.com/reviews/submit/NBP3-15837

Earn gift cards/discounts by submitting a publication using this product:
www.novusbio.com/publications

