

Product Datasheet

EZH2/KMT6 Antibody (9Q2R9)

NBP3-15783-100ul

Unit Size: 100 ul

Store at -20C. Avoid freeze-thaw cycles.

www.novusbio.com



technical@novusbio.com

Protocols, Publications, Related Products, Reviews, Research Tools and Images at:
www.novusbio.com/NBP3-15783

Updated 9/9/2025 v.20.1

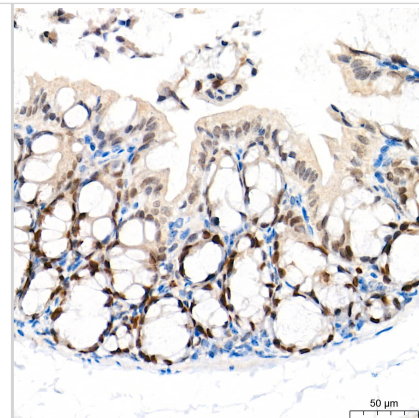
Earn rewards for product
reviews and publications.

Submit a publication at www.novusbio.com/publications

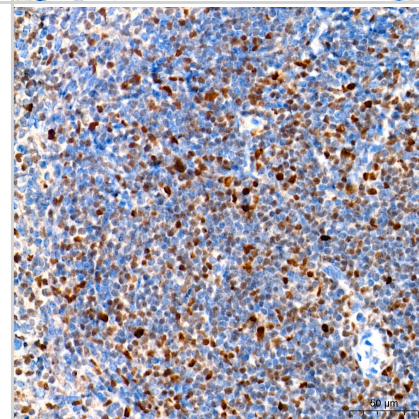
Submit a review at www.novusbio.com/reviews/destination/NBP3-15783



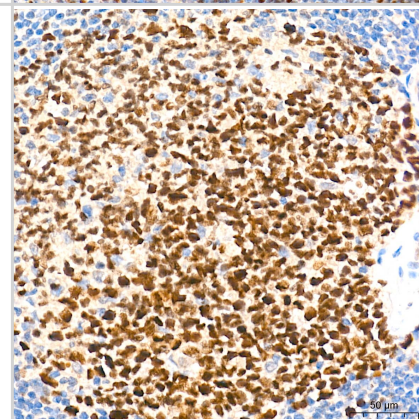
Immunohistochemistry: EZH2/KMT6 Antibody (9Q2R9) [EZH2/KMT6] - Immunohistochemistry analysis of paraffin-embedded Mouse colon tissue using EZH2/KMT6 Rabbit mAb at a dilution of 1:500 (40x lens). High pressure antigen retrieval performed with 0.01M Tris-EDTA Buffer (pH 9.0) prior to IHC staining.



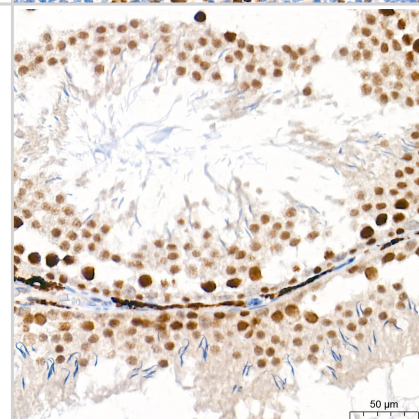
Immunohistochemistry: EZH2/KMT6 Antibody (9Q2R9) [EZH2/KMT6] - Immunohistochemistry analysis of paraffin-embedded Mouse spleen tissue using EZH2/KMT6 Rabbit mAb at a dilution of 1:500 (40x lens). High pressure antigen retrieval performed with 0.01M Tris-EDTA Buffer (pH 9.0) prior to IHC staining.



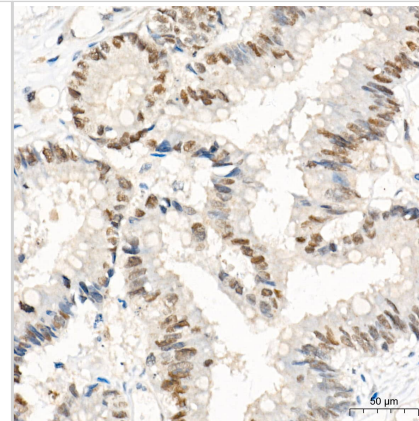
Immunohistochemistry: EZH2/KMT6 Antibody (9Q2R9) [EZH2/KMT6] - Immunohistochemistry analysis of paraffin-embedded Human tonsil tissue using EZH2/KMT6 Rabbit mAb at a dilution of 1:500 (40x lens). High pressure antigen retrieval performed with 0.01M Tris-EDTA Buffer (pH 9.0) prior to IHC staining.



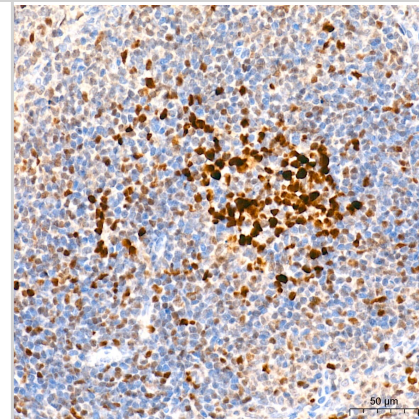
Immunohistochemistry: EZH2/KMT6 Antibody (9Q2R9) [EZH2/KMT6] - Immunohistochemistry analysis of paraffin-embedded Rat testis tissue using EZH2/KMT6 Rabbit mAb at a dilution of 1:500 (40x lens). High pressure antigen retrieval performed with 0.01M Tris-EDTA Buffer (pH 9.0) prior to IHC staining.



Immunohistochemistry: EZH2/KMT6 Antibody (9Q2R9) [EZH2/KMT6] - Immunohistochemistry analysis of paraffin-embedded Human colon carcinoma tissue using EZH2/KMT6 Rabbit mAb at a dilution of 1:500 (40x lens). High pressure antigen retrieval performed with 0.01M Tris-EDTA Buffer (pH 9.0) prior to IHC staining.



Immunohistochemistry: EZH2/KMT6 Antibody (9Q2R9) [EZH2/KMT6] - Immunohistochemistry analysis of paraffin-embedded Rat spleen tissue using EZH2/KMT6 Rabbit mAb at a dilution of 1:500 (40x lens). High pressure antigen retrieval performed with 0.01M Tris-EDTA Buffer (pH 9.0) prior to IHC staining.





Novus Biologicals USA

10730 E. Briarwood Avenue
Centennial, CO 80112
USA
Phone: 303.730.1950
Toll Free: 1.888.506.6887
Fax: 303.730.1966
nb-customerservice@bio-techne.com

Bio-Techne Canada

21 Canmotor Ave
Toronto, ON M8Z 4E6
Canada
Phone: 905.827.6400
Toll Free: 855.668.8722
Fax: 905.827.6402
canada.inquires@bio-techne.com

Bio-Techne Ltd

19 Barton Lane
Abingdon Science Park
Abingdon, OX14 3NB, United Kingdom
Phone: (44) (0) 1235 529449
Free Phone: 0800 37 34 15
Fax: (44) (0) 1235 533420
info.EMEA@bio-techne.com

General Contact Information

www.novusbio.com
Technical Support: nb-technical@bio-techne.com
Orders: nb-customerservice@bio-techne.com
General: novus@novusbio.com

Products Related to NBP3-15783-100ul

NBP2-33376H	Blue Marker Antibody (6F4-F6) [HRP]
HAF008	Goat anti-Rabbit IgG Secondary Antibody [HRP]
NB7160	Goat anti-Rabbit IgG (H+L) Secondary Antibody [HRP]
NBP2-24891	Rabbit IgG Isotype Control

Limitations

This product is for research use only and is not approved for use in humans or in clinical diagnosis. Primary Antibodies are guaranteed for 1 year from date of receipt.

For more information on our 100% guarantee, please visit www.novusbio.com/guarantee

Earn gift cards/discounts by submitting a review: www.novusbio.com/reviews/submit/NBP3-15783

Earn gift cards/discounts by submitting a publication using this product:
www.novusbio.com/publications

