

Product Datasheet

Lamin A + C Antibody (4L8Q0)

NBP3-15754-100ul

Unit Size: 100 ul

Store at -20C. Avoid freeze-thaw cycles.

www.novusbio.com



technical@novusbio.com

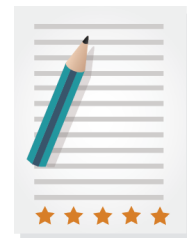
Protocols, Publications, Related Products, Reviews, Research Tools and Images at:
www.novusbio.com/NBP3-15754

Updated 2/17/2026 v.20.1

Earn rewards for product
reviews and publications.

Submit a publication at www.novusbio.com/publications

Submit a review at www.novusbio.com/reviews/destination/NBP3-15754



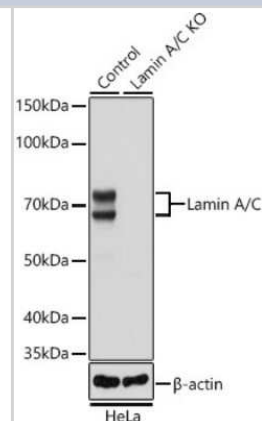
NBP3-15754-100ul

Lamin A + C Antibody (4L8Q0)

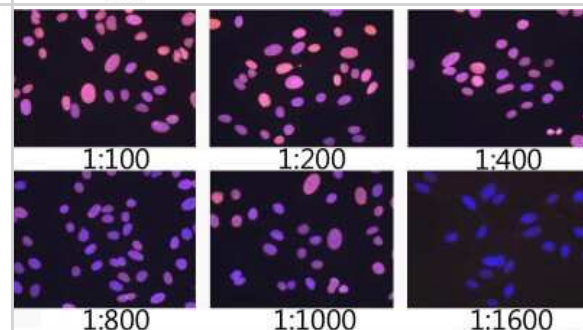
Product Information	
Unit Size	100 ul
Concentration	Please see the vial label for concentration. If unlisted please contact technical services.
Storage	Store at -20C. Avoid freeze-thaw cycles.
Clonality	Monoclonal
Clone	4L8Q0
Preservative	0.02% Sodium Azide
Isotype	IgG
Purity	Affinity purified
Buffer	PBS (pH 7.3), 50% glycerol, 0.05% BSA
Target Molecular Weight	74 kDa
Product Description	
Description	Novus Biologicals Knockout (KO) Validated Rabbit Lamin A + C Antibody (4L8Q0) (NBP3-15754) is a recombinant monoclonal antibody validated for use in IHC, WB, ELISA, ICC/IF and IP. All Novus Biologicals antibodies are covered by our 100% guarantee.
Host	Rabbit
Gene ID	4000
Gene Symbol	LMNA
Species	Human, Mouse, Rat
Immunogen	Recombinant fusion protein containing a sequence corresponding to amino acids 403-572 of human Lamin A + C (NP_733821.1). SSHSSQTQGGGSVTKRKRKLESTESRSSFSQHARTSGRVAVEEVDEEGKQVRL RNKSNEDQSMGNWQIKRQNGDDPLLTYRFPPKFTLKAGQVVTIWAAGAGATH SPPTDLVWKAQNTWGCNSLRTALINSTGEEVAMRKLVRVSVTVVEDEDEDG DDLLHHHHGSHCSS
Product Application Details	
Applications	Western Blot, Immunohistochemistry-Paraffin, ELISA, Immunocytochemistry/Immunofluorescence, Immunohistochemistry, Immunoprecipitation, Knockout Validated
Recommended Dilutions	Western Blot 1:50000 - 1:300000, ELISA Recommended starting concentration is 1 µg/mL. Please optimize the concentration based on your specific assay requirements., Immunohistochemistry 1:1000 - 1:4000, Immunocytochemistry/Immunofluorescence 1:100 - 1:800, Immunoprecipitation 0.5ug-4ug antibody for 200ug-400ug extracts of whole cells, Immunohistochemistry-Paraffin 1:1000 - 1:4000, Knockout Validated

Images

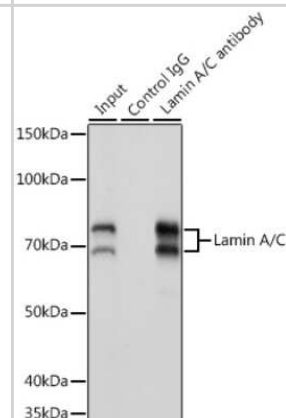
Western Blot: Lamin A + C Antibody (4L8Q0) [NBP3-15754]- Western blot analysis of extracts from normal (control) and Lamin A + C knockout (KO) HeLa cells, using Lamin A + C antibody (NBP3-15754) at 1:50000 dilution. Secondary antibody: HRP Goat Anti-Rabbit IgG (H+L) at 1:10000 dilution. Lysates/proteins: 25ug per lane. Blocking buffer: 3% nonfat dry milk in TBST. Detection: ECL Basic Kit. Exposure time: 1s.



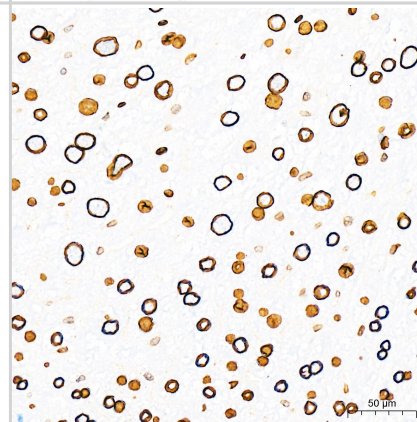
Immunocytochemistry/Immunofluorescence: Lamin A + C Antibody (4L8Q0) [NBP3-15754] - Immunofluorescence analysis of U2OS cells using Lamin A + C antibody (NBP3-15754) at dilution of 1:100 - 1:1600. Blue: DAPI for nuclear staining.



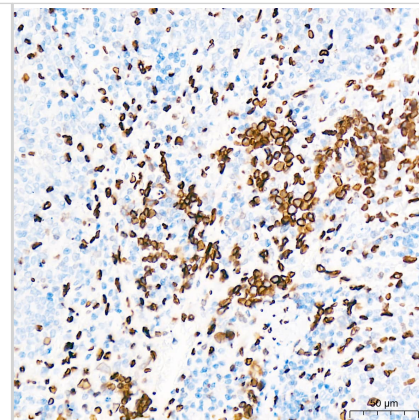
Immunoprecipitation: Lamin A + C Antibody (4L8Q0) [NBP3-15754] - Immunoprecipitation analysis of 200ug extracts of K-562 cells using 3ug Lamin A + C antibody (NBP3-15754). Western blot was performed from the immunoprecipitate using Lamin A + C antibody (NBP3-15754) at a dilution of 1:20000.



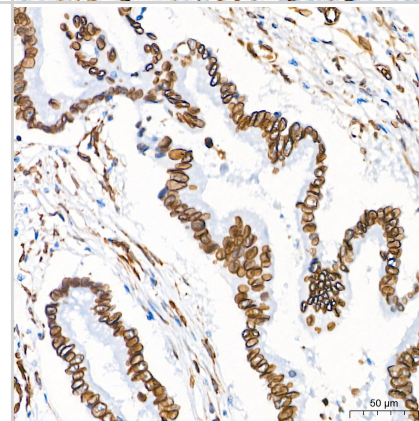
Immunohistochemistry: Lamin A + C Antibody (4L8Q0) [Lamin A + C] - Immunohistochemistry analysis of paraffin-embedded Rat liver tissue using [KO Validated] Lamin A + C Rabbit mAb at a dilution of 1:1300 (40x lens). High pressure antigen retrieval performed with 0.01M Citrate Buffer (pH 6.0) prior to IHC staining.



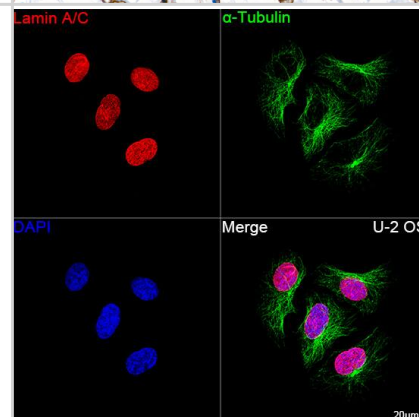
Immunohistochemistry: Lamin A + C Antibody (4L8Q0) [Lamin A + C] - Immunohistochemistry analysis of paraffin-embedded Rat spleen tissue using [KO Validated] Lamin A + C Rabbit mAb at a dilution of 1:1300 (40x lens). High pressure antigen retrieval performed with 0.01M Citrate Buffer (pH 6.0) prior to IHC staining.



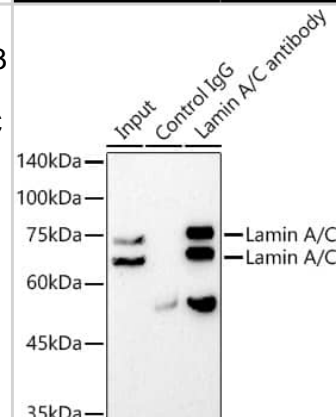
Immunohistochemistry: Lamin A + C Antibody (4L8Q0) [Lamin A + C] - Immunohistochemistry analysis of paraffin-embedded Human colon carcinoma tissue using [KO Validated] Lamin A + C Rabbit mAb at a dilution of 1:1300 (40x lens). High pressure antigen retrieval performed with 0.01M Citrate Buffer (pH 6.0) prior to IHC staining.



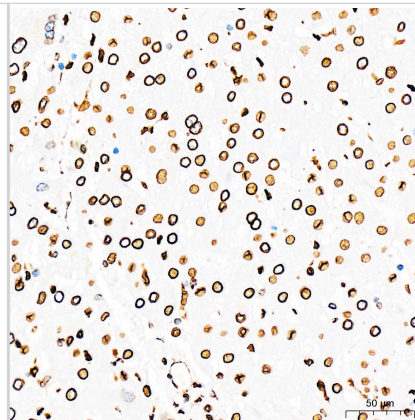
Immunocytochemistry/ Immunofluorescence: Lamin A + C Antibody (4L8Q0) [Lamin A + C] - Confocal imaging of U-2 OS cells using [KO Validated] Lamin A + C Rabbit mAb followed by a further incubation with Cy3 Goat Anti-Rabbit IgG (H+L) . The cells were counterstained with alpha-Tubulin Mouse mAb followed by incubation with ABflo 488-conjugated Goat Anti-Mouse IgG (H+L) Ab (Green). DAPI was used for nuclear staining (Blue). Objective: 100x.



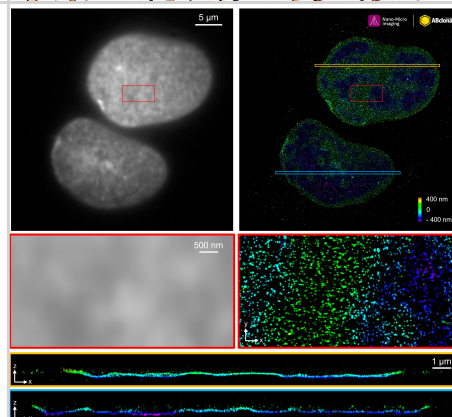
Immunoprecipitation: Lamin A + C Antibody (4L8Q0) [Lamin A + C] - Immunoprecipitation analysis of 300 ug extracts from PC-12 cells using 3 ug [KO Validated] Lamin A + C Rabbit mAb . Western blot was performed from the immunoprecipitate using [KO Validated] Lamin A + C Rabbit mAb at a dilution of 1:100000.



Immunohistochemistry: Lamin A + C Antibody (4L8Q0) [Lamin A + C] - Immunohistochemistry analysis of paraffin-embedded Human liver tissue using [KO Validated] Lamin A + C Rabbit mAb at a dilution of 1:1300 (40x lens). High pressure antigen retrieval performed with 0.01M Citrate Buffer (pH 6.0) prior to IHC staining.



Immunocytochemistry/ Immunofluorescence: Lamin A + C Antibody (4L8Q0) [Lamin A + C] - The STORM super-resolution (SR) imaging of U-2 OS cells using [KO Validated] Lamin A + C Rabbit mAb at dilution of 1:200 with 3% paraformaldehyde (PFA) +0.1% glutaraldehyde (GA) fixation. The immunostaining was performed by Full Automatic Immunofluorescence Workflow System (Workflow Ultra300, Nano-Micro imaging, China). Image was performed with Single-Molecule Localization Super-Resolution Microscopy (STORM Ultra300, Nano-Micro imaging, China). We acknowledge Nano-Micro imaging Biotechnology Co., Ltd. in SR image processing and kindly providing this image.



Western Blot: Lamin A + C Antibody (4L8Q0) [Lamin A + C] - Western blot analysis of lysates from A549 cells using [KO Validated] Lamin A + C Rabbit mAb at 1:240000 dilution incubated overnight at 4C.

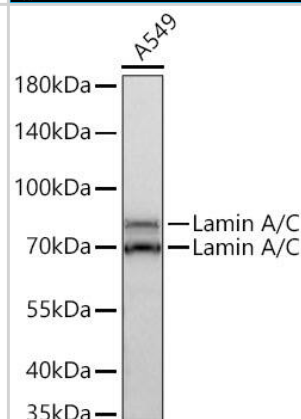
Secondary antibody: HRP-conjugated Goat anti-Rabbit IgG (H+L) at 1:10000 dilution.

Lysates/proteins: 25ug per lane.

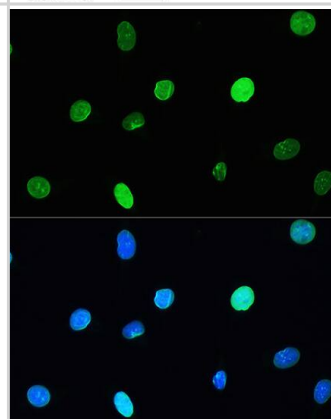
Blocking buffer: 3% nonfat dry milk in TBST.

Detection: ECL Basic Kit .

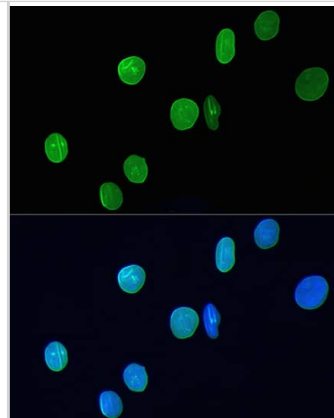
Exposure time: 30s.



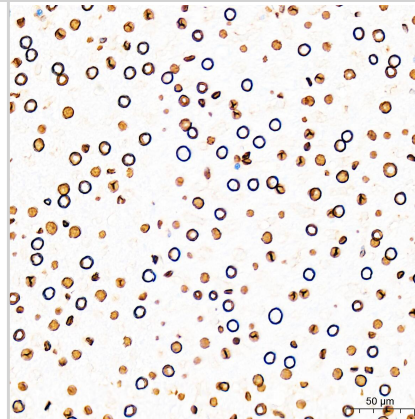
Immunocytochemistry/ Immunofluorescence: Lamin A + C Antibody (4L8Q0) [Lamin A + C] - Immunofluorescence analysis of L929 cells using [KO Validated] Lamin A + C Rabbit mAb at dilution of 1:200. Blue: DAPI for nuclear staining.



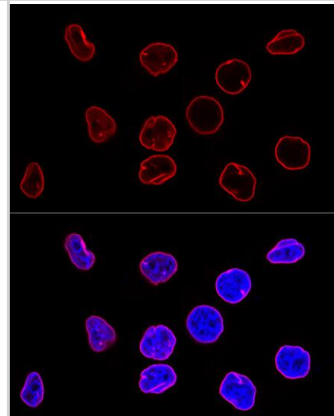
Immunocytochemistry/ Immunofluorescence: Lamin A + C Antibody (4L8Q0) [Lamin A + C] - Immunofluorescence analysis of H9C2 cells using [KO Validated] Lamin A + C Rabbit mAb at dilution of 1:200. Blue: DAPI for nuclear staining.



Immunohistochemistry: Lamin A + C Antibody (4L8Q0) [Lamin A + C] - Immunohistochemistry analysis of paraffin-embedded Mouse liver tissue using [KO Validated] Lamin A + C Rabbit mAb at a dilution of 1:1300 (40x lens). High pressure antigen retrieval performed with 0.01M Citrate Buffer (pH 6.0) prior to IHC staining.



Immunocytochemistry/ Immunofluorescence: Lamin A + C Antibody (4L8Q0) [Lamin A + C] - Confocal immunofluorescence analysis of HeLa cells using [KO Validated] Lamin A + C Rabbit mAb at dilution of 1:100. Blue: DAPI for nuclear staining.



Western Blot: Lamin A + C Antibody (4L8Q0) [Lamin A + C] - Western blot analysis of various lysates using [KO Validated] Lamin A + C Rabbit mAb at 1:300000 dilution incubated overnight at 4C.

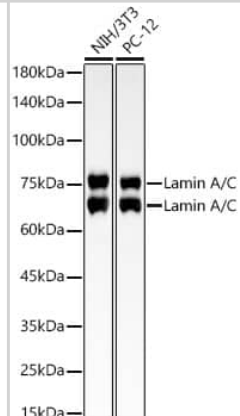
Secondary antibody: HRP-conjugated Goat anti-Rabbit IgG (H+L) at 1:10000 dilution.

Lysates/proteins: 25ug per lane.

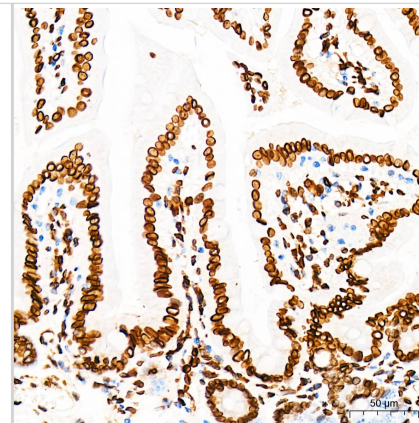
Blocking buffer: 3% nonfat dry milk in TBST.

Detection: ECL Basic Kit .

Exposure time: 30s.



Immunohistochemistry: Lamin A + C Antibody (4L8Q0) [Lamin A + C] - Immunohistochemistry analysis of paraffin-embedded Mouse intestin tissue using [KO Validated] Lamin A + C Rabbit mAb at a dilution of 1:1300 (40x lens). High pressure antigen retrieval performed with 0.01M Citrate Buffer (pH 6.0) prior to IHC staining.





Novus Biologicals USA

10730 E. Briarwood Avenue
Centennial, CO 80112
USA
Phone: 303.730.1950
Toll Free: 1.888.506.6887
Fax: 303.730.1966
nb-customerservice@bio-techne.com

Bio-Techne Canada

21 Canmotor Ave
Toronto, ON M8Z 4E6
Canada
Phone: 905.827.6400
Toll Free: 855.668.8722
Fax: 905.827.6402
canada.inquires@bio-techne.com

Bio-Techne Ltd

19 Barton Lane
Abingdon Science Park
Abingdon, OX14 3NB, United Kingdom
Phone: (44) (0) 1235 529449
Free Phone: 0800 37 34 15
Fax: (44) (0) 1235 533420
info.EMEA@bio-techne.com

General Contact Information

www.novusbio.com
Technical Support: nb-technical@bio-techne.com
Orders: nb-customerservice@bio-techne.com
General: novus@novusbio.com

Products Related to NBP3-15754-100ul

NBP2-33376H	Blue Marker Antibody (6F4-F6) [HRP]
HAF008	Goat anti-Rabbit IgG Secondary Antibody [HRP]
NB7160	Goat anti-Rabbit IgG (H+L) Secondary Antibody [HRP]
NBP2-24891	Rabbit IgG Isotype Control

Limitations

This product is for research use only and is not approved for use in humans or in clinical diagnosis. Primary Antibodies are guaranteed for 1 year from date of receipt.

For more information on our 100% guarantee, please visit www.novusbio.com/guarantee

Earn gift cards/discounts by submitting a review: www.novusbio.com/reviews/submit/NBP3-15754

Earn gift cards/discounts by submitting a publication using this product:
www.novusbio.com/publications

