

Product Datasheet

TOMM20 Antibody (10G6I8)

NBP3-15750-100ul

Unit Size: 100 ul

Store at -20C. Avoid freeze-thaw cycles.

www.novusbio.com



technical@novusbio.com

Protocols, Publications, Related Products, Reviews, Research Tools and Images at:
www.novusbio.com/NBP3-15750

Updated 2/17/2026 v.20.1

Earn rewards for product
reviews and publications.

Submit a publication at www.novusbio.com/publications

Submit a review at www.novusbio.com/reviews/destination/NBP3-15750



NBP3-15750-100ul

TOMM20 Antibody (10G6I8)

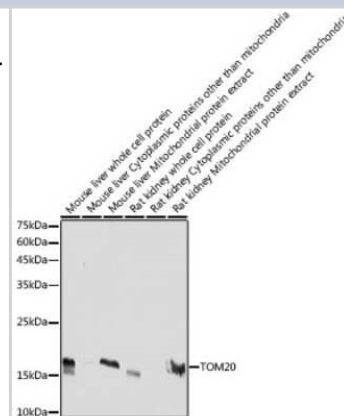
| Product Information | |
|--------------------------------|---|
| Unit Size | 100 ul |
| Concentration | Please see the vial label for concentration. If unlisted please contact technical services. |
| Storage | Store at -20C. Avoid freeze-thaw cycles. |
| Clonality | Monoclonal |
| Clone | 10G6I8 |
| Preservative | 0.02% Sodium Azide |
| Isotype | IgG |
| Purity | Affinity purified |
| Buffer | PBS (pH 7.3), 50% glycerol, 0.05% BSA |
| Target Molecular Weight | 16 kDa |

| Product Description | |
|---------------------|---|
| Description | Novus Biologicals Rabbit TOMM20 Antibody (10G6I8) (NBP3-15750) is a recombinant monoclonal antibody validated for use in IHC, WB, ELISA, ICC/IF and IP. All Novus Biologicals antibodies are covered by our 100% guarantee. |
| Host | Rabbit |
| Gene ID | 9804 |
| Gene Symbol | TOMM20 |
| Species | Human, Mouse, Rat |
| Immunogen | Recombinant fusion protein containing a sequence corresponding to amino acids 20-145 of human TOMM20 (NP_055580.1). YCIYFDRKRRSDPNFKNRLRERRKKQKLAKERAGLSKLPDLKDAEAVQKFFLE EIQLGEELLAQGEYEKGV DHLTNAIAVCGQPQQLLQVLQQTLP PPVFQMLLTKL PTISQRIVSAQSLAEDDVE |

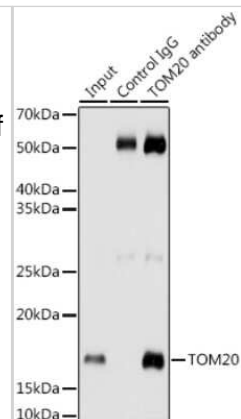
| Product Application Details | |
|------------------------------|--|
| Applications | Western Blot, Immunohistochemistry-Paraffin, ELISA, Immunocytochemistry/Immunofluorescence, Immunohistochemistry, Immunoprecipitation |
| Recommended Dilutions | Western Blot 1:2000 - 1:6000, ELISA, Immunohistochemistry 1:50 - 1:200, Immunocytochemistry/ Immunofluorescence 1:100 - 1:500, Immunoprecipitation -0.5µg-4µg antibody for 200µg-400µg extracts of whole cells, Immunohistochemistry-Paraffin 1:50 - 1:200 |

Images

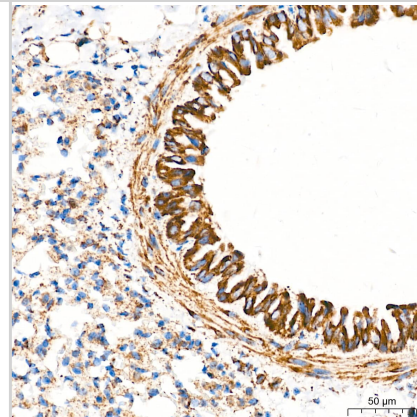
Western Blot: TOMM20 Antibody (6E0N2) [NBP3-15750] - Western blot analysis of extracts of various cell lines, using TOMM20 antibody (NBP3-15750) at 1:5000 dilution. Secondary antibody: HRP Goat Anti-Rabbit IgG (H+L) at 1:10000 dilution. Lysates/proteins: 25ug per lane. Blocking buffer: 3% nonfat dry milk in TBST. Detection: ECL Basic Kit. Exposure time: 10s.



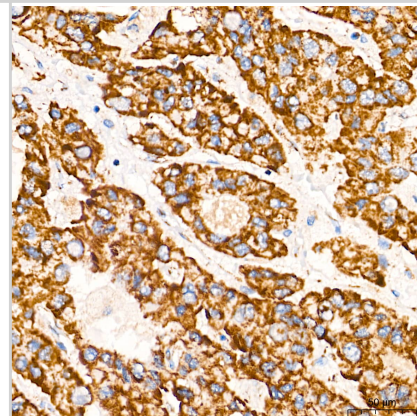
Immunoprecipitation: TOMM20 Antibody (6E0N2) [NBP3-15750] - Immunoprecipitation analysis of 200ug extracts of HeLa cells using 3ug TOMM20 antibody (NBP3-15750). Western blot was performed from the immunoprecipitate using TOMM20 antibody (NBP3-15750) at a dilution of 1:1000.



Immunohistochemistry: TOMM20 Antibody (10G6I8) [TOMM20] - Immunohistochemistry analysis of paraffin-embedded Mouse lung tissue using TOMM20 Rabbit mAb at a dilution of 1:5000 (40x lens). High pressure antigen retrieval performed with 0.01M Tris-EDTA Buffer (pH 9.0) prior to IHC staining.



Immunohistochemistry: TOMM20 Antibody (10G6I8) [TOMM20] - Immunohistochemistry analysis of paraffin-embedded Human liver cancer tissue using TOMM20 Rabbit mAb at a dilution of 1:5000 (40x lens). High pressure antigen retrieval performed with 0.01M Tris-EDTA Buffer (pH 9.0) prior to IHC staining.



Western Blot: TOMM20 Antibody (10G6I8) [TOMM20] - Western blot analysis of lysates from HeLa cells using TOMM20 Rabbit mAb at 1:10000-1:640000 dilution incubated overnight at 4C.

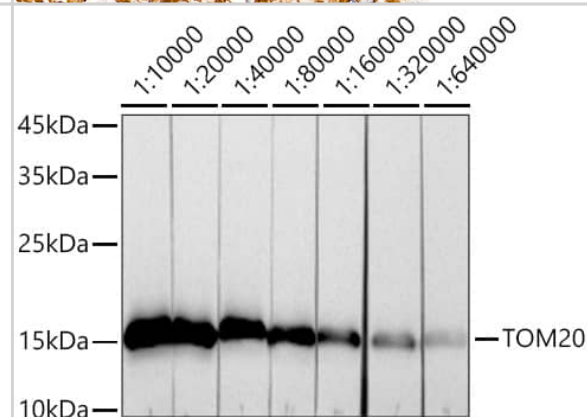
Secondary antibody: HRP-conjugated Goat anti-Rabbit IgG (H+L) at 1:10000 dilution.

Lysates/proteins: 25 ug per lane.

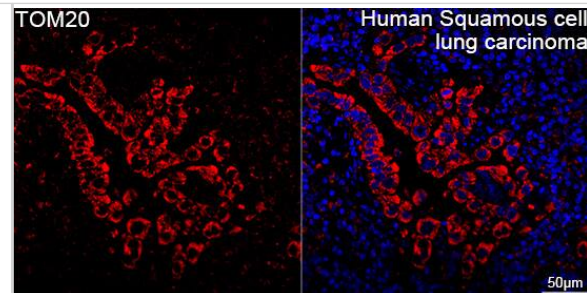
Blocking buffer: 3% nonfat dry milk in TBST.

Detection: ECL Basic Kit .

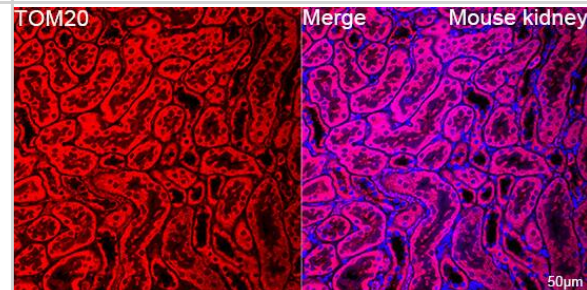
Exposure time: 30s.



Immunocytochemistry/ Immunofluorescence: TOMM20 Antibody (10G6I8) [TOMM20] - Confocal imaging of paraffin-embedded Human squamous cell lung carcinoma tissue using TOMM20 Rabbit mAb followed by a further incubation with Cy3 Goat Anti-Rabbit IgG (H+L) . DAPI was used for nuclear staining (Blue). High pressure antigen retrieval performed with 0.01M Citrate Buffer (pH 6.0) prior to IF staining. Objective: 40x.



Immunocytochemistry/ Immunofluorescence: TOMM20 Antibody (10G6I8) [TOMM20] - Confocal imaging of paraffin-embedded Mouse kidney using TOMM20 Rabbit mAb followed by a further incubation with Cy3 Goat Anti-Rabbit IgG (H+L) . DAPI was used for nuclear staining (Blue). Objective: 40x. Perform high pressure antigen retrieval with 0.01 M citrate buffer (pH 6.0) prior to IF staining.



Western Blot: TOMM20 Antibody (10G6I8) [TOMM20] - Western blot analysis of various lysates using TOMM20 Rabbit mAb at 1:5000 dilution incubated overnight at 4C.

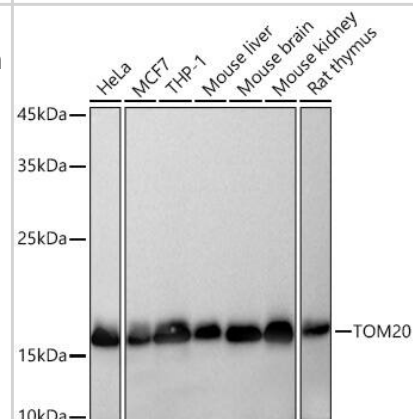
Secondary antibody: HRP-conjugated Goat anti-Rabbit IgG (H+L) at 1:10000 dilution.

Lysates/proteins: 25 ug per lane.

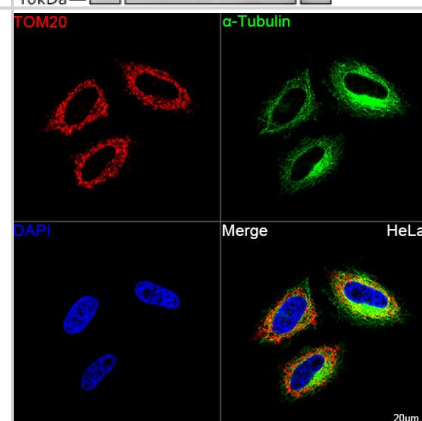
Blocking buffer: 3% nonfat dry milk in TBST.

Detection: ECL Basic Kit .

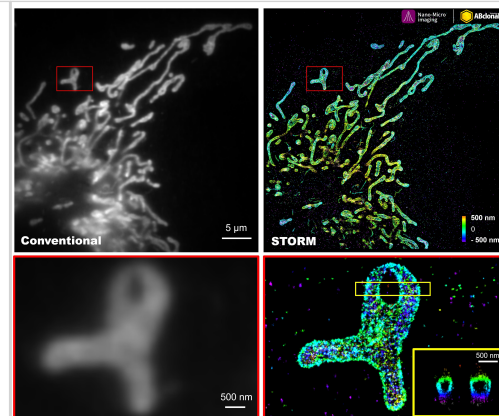
Exposure time: 10s.



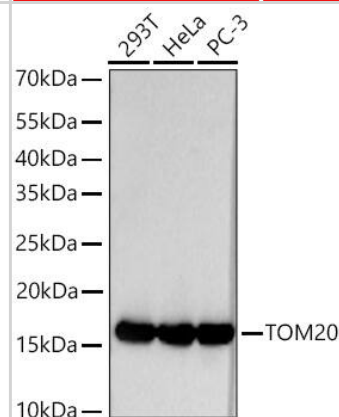
Immunocytochemistry/ Immunofluorescence: TOMM20 Antibody (10G6I8) [TOMM20] - Confocal imaging of HeLa cells using TOMM20 Rabbit mAb followed by a further incubation with Cy3 Goat Anti-Rabbit IgG (H+L) . The cells were counterstained with alpha-Tubulin Mouse mAb followed by incubation with ABflo 488-conjugated Goat Anti-Mouse IgG (H+L) Ab (Green). DAPI was used for nuclear staining (Blue). Objective: 100x.



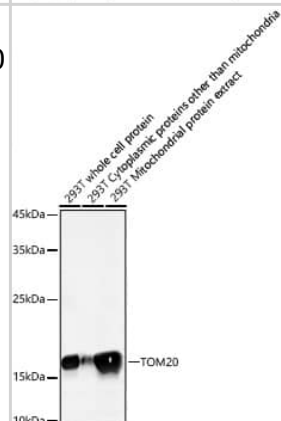
Immunocytochemistry/ Immunofluorescence: TOMM20 Antibody (10G6I8) [TOMM20] - The STORM super-resolution (SR) imaging of COS7 cells using TOMM20 Rabbit mAb at dilution of 1:200 with 3% paraformaldehyde (PFA) +0.1% glutaraldehyde (GA) fixation. The immunostaining was performed by Full Automatic Immunofluorescence Workflow System (Workflow Ultra300, Nano-Micro imaging, China). Image was performed with Single-Molecule Localization Super-Resolution Microscopy (STORM Ultra300, Nano-Micro imaging, China). We acknowledge Nano-Micro imaging Biotechnology Co., Ltd. in SR image processing and kindly providing this image.



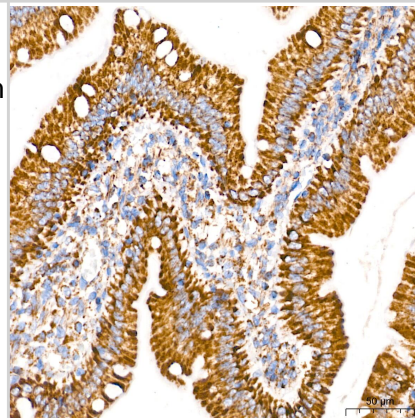
Western Blot: TOMM20 Antibody (10G6I8) [TOMM20] - Western blot analysis of various lysates using TOMM20 Rabbit mAb at 1:20000 dilution incubated overnight at 4C.
 Secondary antibody: HRP-conjugated Goat anti-Rabbit IgG (H+L) at 1:10000 dilution.
 Lysates/proteins: 25 ug per lane.
 Blocking buffer: 3% nonfat dry milk in TBST.
 Detection: ECL Basic Kit .
 Exposure time: 30s.



Western Blot: TOMM20 Antibody (10G6I8) [TOMM20] - Western blot analysis of lysates from 293T cells using TOMM20 Rabbit mAb at 1:5000 dilution incubated overnight at 4C.
 Secondary antibody: HRP-conjugated Goat anti-Rabbit IgG (H+L) at 1:10000 dilution.
 Lysates/proteins: 25 ug per lane.
 Blocking buffer: 3% nonfat dry milk in TBST.
 Detection: ECL Basic Kit .
 Exposure time: 10s.



Immunohistochemistry: TOMM20 Antibody (10G6I8) [TOMM20] - Immunohistochemistry analysis of paraffin-embedded Rat intestine tissue using TOMM20 Rabbit mAb at a dilution of 1:5000 (40x lens). High pressure antigen retrieval performed with 0.01M Tris-EDTA Buffer (pH 9.0) prior to IHC staining.





Novus Biologicals USA

10730 E. Briarwood Avenue
Centennial, CO 80112
USA
Phone: 303.730.1950
Toll Free: 1.888.506.6887
Fax: 303.730.1966
nb-customerservice@bio-techne.com

Bio-Techne Canada

21 Canmotor Ave
Toronto, ON M8Z 4E6
Canada
Phone: 905.827.6400
Toll Free: 855.668.8722
Fax: 905.827.6402
canada.inquires@bio-techne.com

Bio-Techne Ltd

19 Barton Lane
Abingdon Science Park
Abingdon, OX14 3NB, United Kingdom
Phone: (44) (0) 1235 529449
Free Phone: 0800 37 34 15
Fax: (44) (0) 1235 533420
info.EMEA@bio-techne.com

General Contact Information

www.novusbio.com
Technical Support: nb-technical@bio-techne.com
Orders: nb-customerservice@bio-techne.com
General: novus@novusbio.com

Products Related to NBP3-15750-100ul

| | |
|-------------|---|
| NBP2-33376H | Blue Marker Antibody (6F4-F6) [HRP] |
| HAF008 | Goat anti-Rabbit IgG Secondary Antibody [HRP] |
| NB7160 | Goat anti-Rabbit IgG (H+L) Secondary Antibody [HRP] |
| NBP2-24891 | Rabbit IgG Isotype Control |

Limitations

This product is for research use only and is not approved for use in humans or in clinical diagnosis. Primary Antibodies are guaranteed for 1 year from date of receipt.

For more information on our 100% guarantee, please visit www.novusbio.com/guarantee

Earn gift cards/discounts by submitting a review: www.novusbio.com/reviews/submit/NBP3-15750

Earn gift cards/discounts by submitting a publication using this product:
www.novusbio.com/publications

