

Product Datasheet

Integrin alpha 5/CD49e Antibody (8F206) NBP3-15645-100ul

Unit Size: 100 ul

Store at -20C. Avoid freeze-thaw cycles.

www.novusbio.com



technical@novusbio.com

Protocols, Publications, Related Products, Reviews, Research Tools and Images at:
www.novusbio.com/NBP3-15645

Updated 9/9/2025 v.20.1

Earn rewards for product
reviews and publications.

Submit a publication at www.novusbio.com/publications

Submit a review at www.novusbio.com/reviews/destination/NBP3-15645



NBP3-15645-100ul

Integrin alpha 5/CD49e Antibody (8F2O6)

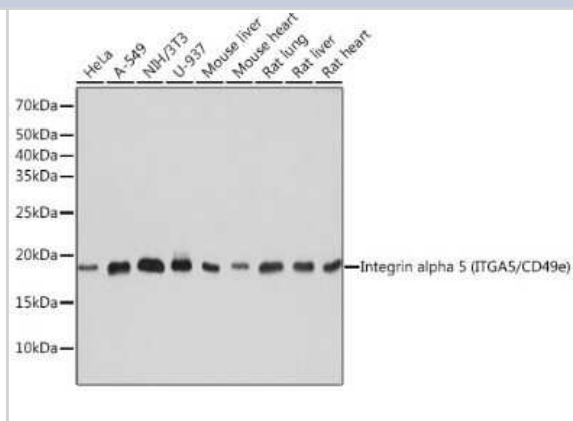
| Product Information | |
|----------------------|---|
| Unit Size | 100 ul |
| Concentration | Please see the vial label for concentration. If unlisted please contact technical services. |
| Storage | Store at -20C. Avoid freeze-thaw cycles. |
| Clonality | Monoclonal |
| Clone | 8F2O6 |
| Preservative | 0.02% Sodium Azide |
| Isotype | IgG |
| Purity | Affinity purified |
| Buffer | PBS (pH 7.3), 50% glycerol, 0.05% BSA |

| Product Description | |
|---------------------|---|
| Description | Novus Biologicals Rabbit Integrin alpha 5/CD49e Antibody (8F2O6) (NBP3-15645) is a recombinant monoclonal antibody validated for use in IHC, WB, Flow and ICC/IF. All Novus Biologicals antibodies are covered by our 100% guarantee. |
| Host | Rabbit |
| Gene ID | 3678 |
| Gene Symbol | ITGA5 |
| Species | Human, Mouse, Rat |
| Immunogen | A synthetic peptide corresponding to a sequence within amino acids 950-1049 of human Integrin alpha 5/CD49e (P08648). HQPFSLQCEAVYKALKMPYRILPRQLPQKERQVATAVQWTKAEGSYGVPLWIII LAILFGLLLLGLLIYILYKLGFFKRSLPYGTAMEKAQLKPPATSDA |

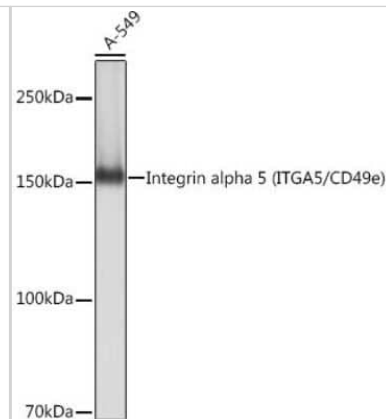
| Product Application Details | |
|------------------------------|--|
| Applications | Western Blot, Immunohistochemistry-Paraffin, Flow Cytometry, Immunocytochemistry/ Immunofluorescence, Immunohistochemistry |
| Recommended Dilutions | Western Blot 1:500 - 1:2000, Flow Cytometry 1:50 - 1:200, Immunohistochemistry 1:50 - 1:200, Immunocytochemistry/ Immunofluorescence 1:50 - 1:200, Immunohistochemistry-Paraffin |

Images

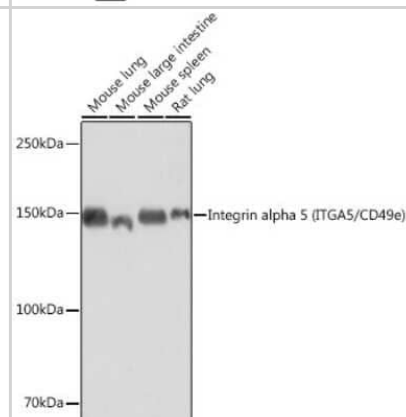
Western Blot: Integrin alpha 5/CD49e Antibody (8F2O6) [NBP3-15645] - Analysis of extracts of various cell lines, using Integrin alpha 5/CD49e (ITGA5/CD49e) antibody (NBP3-15645) at 1:1000 dilution. Secondary antibody: HRP Goat Anti-Rabbit IgG (H+L) at 1:10000 dilution. Lysates/proteins: 25ug per lane. Blocking buffer: 3% nonfat dry milk in TBST. Detection: ECL Basic Kit. Exposure time: 1s.



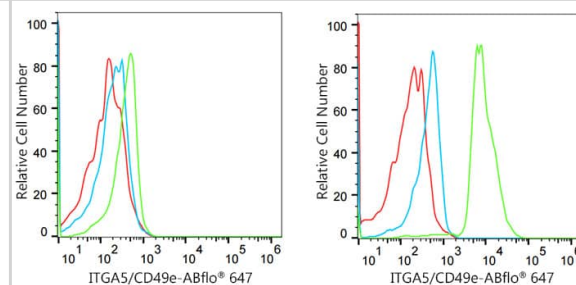
Western Blot: Integrin alpha 5/CD49e Antibody (8F2O6) [NBP3-15645] - Analysis of extracts of A-549 cells, using Integrin alpha 5/CD49e (ITGA5/CD49e) antibody (NBP3-15645) at 1:1000 dilution. Secondary antibody: HRP Goat Anti-Rabbit IgG (H+L) at 1:10000 dilution. Lysates/proteins: 25ug per lane. Blocking buffer: 3% nonfat dry milk in TBST. Detection: ECL Basic Kit. Exposure time: 1s.



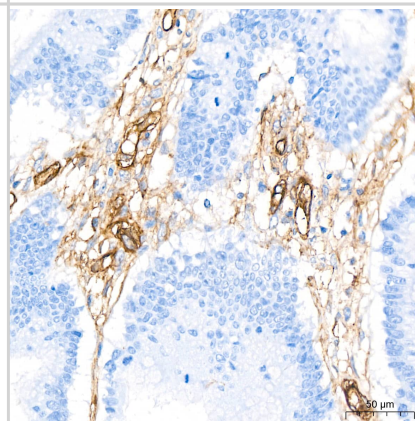
Western Blot: Integrin alpha 5/CD49e Antibody (8F2O6) [NBP3-15645] - Analysis of extracts of various cell lines, using Integrin alpha 5/CD49e (ITGA5/CD49e) antibody (NBP3-15645) at 1:1000 dilution. Secondary antibody: HRP Goat Anti-Rabbit IgG (H+L) at 1:10000 dilution. Lysates/proteins: 25ug per lane. Blocking buffer: 3% nonfat dry milk in TBST. Detection: ECL Basic Kit. Exposure time: 10s.



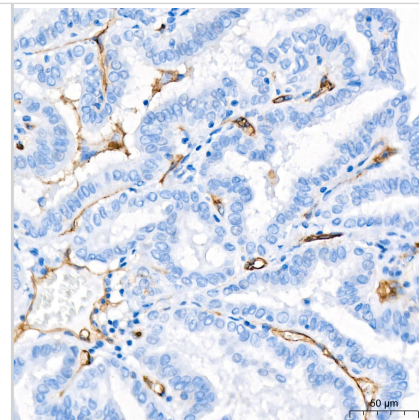
Flow Cytometry: Integrin alpha 5/CD49e Antibody (8F2O6) [Integrin alpha 5/CD49e] - Flow cytometry: 1×10^6 Daudi cells (negative control, left) and K-562 cells were intracellularly-stained with Integrin alpha 5/CD49e Rabbit mAb or Rabbit IgG isotype control, followed by Alexa Fluor 647 conjugated goat anti-rabbit pAb (1:600 dilution) staining. Non-fluorescently stained cells were used as blank control.



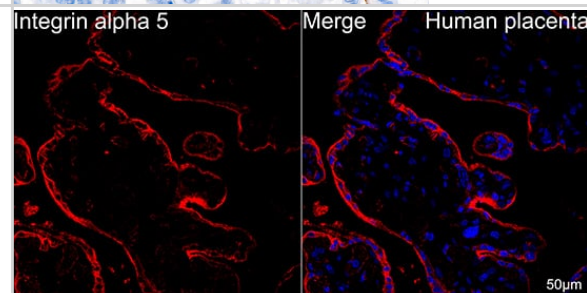
Immunohistochemistry: Integrin alpha 5/CD49e Antibody (8F2O6) [Integrin alpha 5/CD49e] - Immunohistochemistry analysis of paraffin-embedded Human colon carcinoma tissue using Integrin alpha 5/CD49e Rabbit mAb at a dilution of 1:200 (40x lens). High pressure antigen retrieval performed with 0.01M Citrate Buffer (pH 6.0) prior to IHC staining.



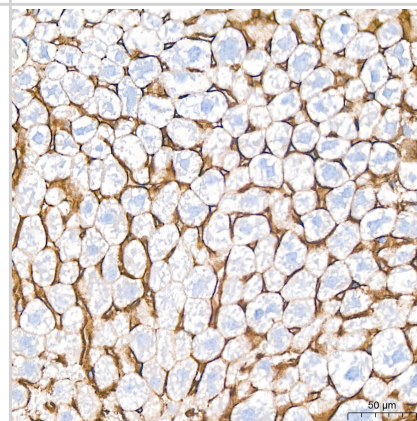
Immunohistochemistry: Integrin alpha 5/CD49e Antibody (8F2O6)
[Integrin alpha 5/CD49e] - Immunohistochemistry analysis of paraffin-embedded Human thyroid cancer tissue using Integrin alpha 5/CD49e Rabbit mAb at a dilution of 1:200 (40x lens). High pressure antigen retrieval performed with 0.01M Citrate Bufferr (pH 6.0) prior to IHC staining.



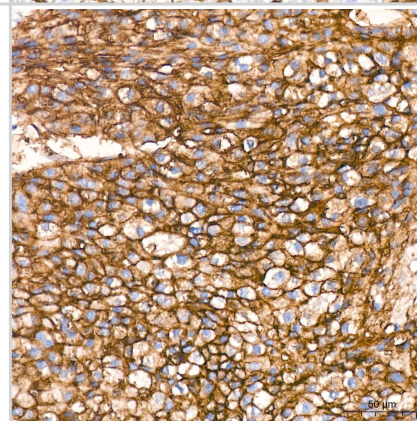
Immunocytochemistry/ Immunofluorescence: Integrin alpha 5/CD49e Antibody (8F2O6)
[Integrin alpha 5/CD49e] - Confocal imaging of paraffin-embedded Human placenta using Integrin alpha 5/CD49e Rabbit mAb followed by a further incubation with Cy3 Goat Anti-Rabbit IgG (H+L) . DAPI was used for nuclear staining (Blue). Objective: 40x. Perform high pressure antigen retrieval with 0.01 M citrate buffer (pH 6.0) prior to IF staining.



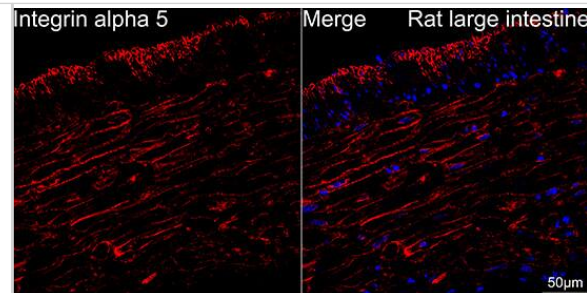
Immunohistochemistry: Integrin alpha 5/CD49e Antibody (8F2O6)
[Integrin alpha 5/CD49e] - Immunohistochemistry analysis of paraffin-embedded Mouse liver tissue using Integrin alpha 5/CD49e Rabbit mAb at a dilution of 1:200 (40x lens). High pressure antigen retrieval performed with 0.01M Citrate Bufferr (pH 6.0) prior to IHC staining.



Immunohistochemistry: Integrin alpha 5/CD49e Antibody (8F2O6)
[Integrin alpha 5/CD49e] - Immunohistochemistry analysis of paraffin-embedded Human liver cancer tissue using Integrin alpha 5/CD49e Rabbit mAb at a dilution of 1:200 (40x lens). High pressure antigen retrieval performed with 0.01M Citrate Bufferr (pH 6.0) prior to IHC staining.



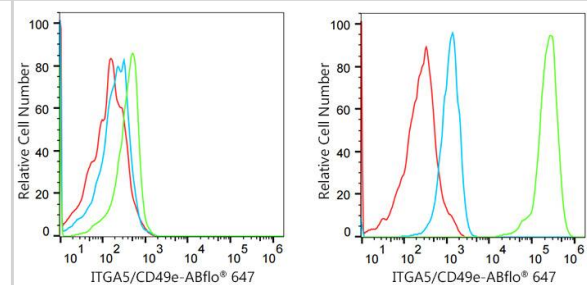
Immunocytochemistry/ Immunofluorescence: Integrin alpha 5/CD49e Antibody (8F2O6) [Integrin alpha 5/CD49e] - Confocal imaging of paraffin-embedded Rat large intestine using Integrin alpha 5/CD49e Rabbit mAb followed by a further incubation with Cy3 Goat Anti-Rabbit IgG (H+L) . DAPI was used for nuclear staining (Blue). Objective: 40x. Perform high pressure antigen retrieval with 0.01 M citrate buffer (pH 6.0) prior to IF staining.



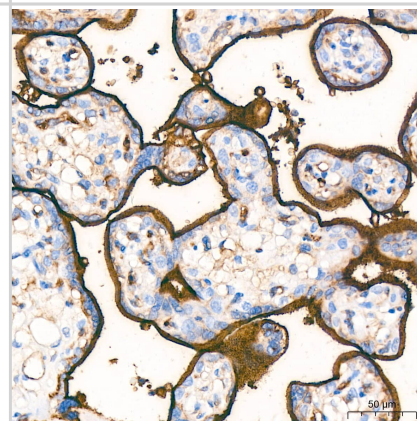
Immunohistochemistry: Integrin alpha 5/CD49e Antibody (8F2O6) [Integrin alpha 5/CD49e] - Immunohistochemistry analysis of paraffin-embedded Rat liver tissue using Integrin alpha 5/CD49e Rabbit mAb at a dilution of 1:200 (40x lens). High pressure antigen retrieval performed with 0.01M Citrate Bufferr (pH 6.0) prior to IHC staining.



Flow Cytometry: Integrin alpha 5/CD49e Antibody (8F2O6) [Integrin alpha 5/CD49e] - Flow cytometry: 1×10^6 Daudi cells (negative control, left) and U-87MG cells were intracellularly-stained with Integrin alpha 5/CD49e Rabbit mAb or Rabbit IgG isotype control ,followed by Alexa Fluor 647 conjugated goat anti-rabbit pAb(1:600 dilution) staining. Non-fluorescently stained cells were used as blank control .



Immunohistochemistry: Integrin alpha 5/CD49e Antibody (8F2O6) [Integrin alpha 5/CD49e] - Immunohistochemistry analysis of paraffin-embedded Human placenta tissue using Integrin alpha 5/CD49e Rabbit mAb at a dilution of 1:200 (40x lens). High pressure antigen retrieval performed with 0.01M Citrate Bufferr (pH 6.0) prior to IHC staining.





Novus Biologicals USA

10730 E. Briarwood Avenue
Centennial, CO 80112
USA
Phone: 303.730.1950
Toll Free: 1.888.506.6887
Fax: 303.730.1966
nb-customerservice@bio-techne.com

Bio-Techne Canada

21 Canmotor Ave
Toronto, ON M8Z 4E6
Canada
Phone: 905.827.6400
Toll Free: 855.668.8722
Fax: 905.827.6402
canada.inquires@bio-techne.com

Bio-Techne Ltd

19 Barton Lane
Abingdon Science Park
Abingdon, OX14 3NB, United Kingdom
Phone: (44) (0) 1235 529449
Free Phone: 0800 37 34 15
Fax: (44) (0) 1235 533420
info.EMEA@bio-techne.com

General Contact Information

www.novusbio.com
Technical Support: nb-technical@bio-techne.com
Orders: nb-customerservice@bio-techne.com
General: novus@novusbio.com

Products Related to NBP3-15645-100ul

| | |
|-------------|---|
| NBP2-33376H | Blue Marker Antibody (6F4-F6) [HRP] |
| HAF008 | Goat anti-Rabbit IgG Secondary Antibody [HRP] |
| NB7160 | Goat anti-Rabbit IgG (H+L) Secondary Antibody [HRP] |
| NBP2-24891 | Rabbit IgG Isotype Control |

Limitations

This product is for research use only and is not approved for use in humans or in clinical diagnosis. Primary Antibodies are guaranteed for 1 year from date of receipt.

For more information on our 100% guarantee, please visit www.novusbio.com/guarantee

Earn gift cards/discounts by submitting a review: www.novusbio.com/reviews/submit/NBP3-15645

Earn gift cards/discounts by submitting a publication using this product:
www.novusbio.com/publications

