

Product Datasheet

beta Tubulin Antibody (4E9G8)

NBP3-15439-100ul

Unit Size: 100 ul

Store at -20C. Avoid freeze-thaw cycles.

www.novusbio.com



technical@novusbio.com

Protocols, Publications, Related Products, Reviews, Research Tools and Images at:
www.novusbio.com/NBP3-15439

Updated 9/9/2025 v.20.1

Earn rewards for product
reviews and publications.

Submit a publication at www.novusbio.com/publications

Submit a review at www.novusbio.com/reviews/destination/NBP3-15439



NBP3-15439-100ul

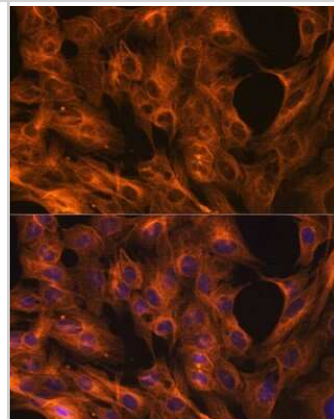
beta Tubulin Antibody (4E9G8)

Product Information	
Unit Size	100 ul
Concentration	Please see the vial label for concentration. If unlisted please contact technical services.
Storage	Store at -20C. Avoid freeze-thaw cycles.
Clonality	Monoclonal
Clone	4E9G8
Preservative	0.02% Sodium Azide
Isotype	IgG
Purity	Affinity purified
Buffer	PBS (pH 7.3), 50% glycerol, 0.05% BSA
Target Molecular Weight	50 kDa
Product Description	
Description	Novus Biologicals Rabbit beta Tubulin Antibody (4E9G8) (NBP3-15439) is a recombinant monoclonal antibody validated for use in IHC, WB, ELISA, ICC/IF and IP. All Novus Biologicals antibodies are covered by our 100% guarantee.
Host	Rabbit
Gene ID	203068
Gene Symbol	TUBB
Species	Human, Mouse, Rat
Immunogen	A synthetic peptide corresponding to a sequence within amino acids 250-350 of human beta Tubulin (P07437). LRKLAVNMVPPFRLHFFMPGFAPLTSRGSQQYRALTVPCLTQQVFDKNNMMA ACDPRHGRYLTVAAVFRGRMSMKEVDEQMLNVQNKNSSYFVEWIPNNVK
Product Application Details	
Applications	Western Blot, Immunohistochemistry-Paraffin, ELISA, Immunocytochemistry/Immunofluorescence, Immunohistochemistry, Immunoprecipitation
Recommended Dilutions	Western Blot 1:5000 - 1:10000, ELISA ,Recommended starting concentration is 1 µg/mL. Please optimize the concentration based on your specific assay requirements., Immunohistochemistry 1:50 - 1:200, Immunocytochemistry/Immunofluorescence 1:50 - 1:200, Immunoprecipitation 0.5µg-4µg antibody for 200µg-400µg extracts of whole cells, Immunohistochemistry-Paraffin 1:50 - 1:200

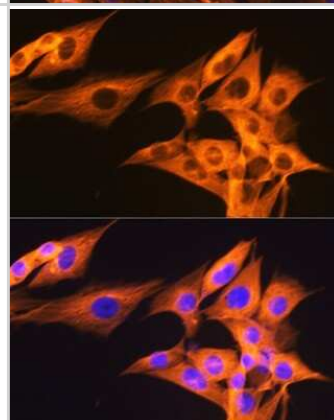


Images

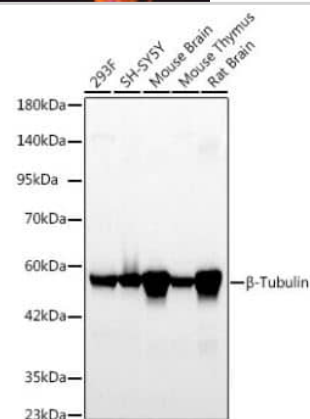
Immunocytochemistry/Immunofluorescence: beta Tubulin Antibody (4E9G8) [NBP3-15439] - Immunofluorescence analysis of C6 cells using beta Tubulin antibody (NBP3-15439) at dilution of 1:100. Blue: DAPI for nuclear staining.



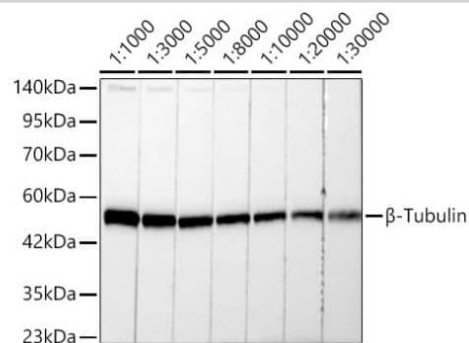
Immunocytochemistry/Immunofluorescence: beta Tubulin Antibody (4E9G8) [NBP3-15439] - Immunofluorescence analysis of NIH/3T3 cells using beta Tubulin antibody (NBP3-15439) at dilution of 1:100. Blue: DAPI for nuclear staining.



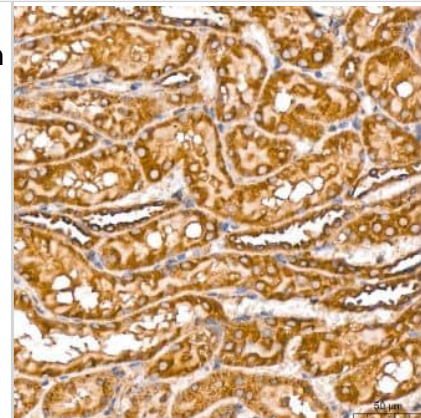
Western Blot: beta Tubulin Antibody (4E9G8) [NBP3-15439] - Analysis of various lysates using β -Tubulin Rabbit mAb at 1:5000 dilution. Secondary antibody: HRP-conjugated Goat anti-Rabbit IgG (H+L) at 1:10000 dilution. Lysates/proteins: 25ug per lane. Blocking buffer: 3% nonfat dry milk in TBST. Detection: ECL Basic Kit. Exposure time: 20s.



Western Blot: beta Tubulin Antibody (4E9G8) [NBP3-15439] - Analysis of lysates from 293F cells, using β -Tubulin Rabbit mAb at 1:1000-1:30000 dilution. Secondary antibody: HRP-conjugated Goat anti-Rabbit IgG (H+L) at 1:10000 dilution. Lysates/proteins: 25ug per lane. Blocking buffer: 3% nonfat dry milk in TBST. Detection: ECL Basic Kit. Exposure time: 10s.



Immunohistochemistry-Paraffin: beta Tubulin Antibody (4E9G8) [NBP3-15439] -Analysis of paraffin-embedded Rat kidney tissue using β -Tubulin Rabbit mAb at a dilution of 1:200 (40x lens). High pressure antigen retrieval performed with 0.01M Citrate Buffer (pH 6.0) prior to IHC staining.



Western Blot: beta Tubulin Antibody (4E9G8) [beta Tubulin] - Western blot analysis of various lysates using beta Tubulin Rabbit mAb at 1:5000 dilution.

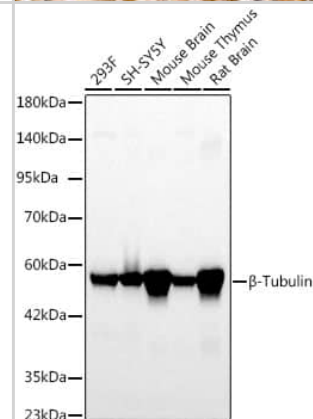
Secondary antibody: HRP-conjugated Goat anti-Rabbit IgG (H+L) at 1:10000 dilution.

Lysates/proteins: 25ug per lane.

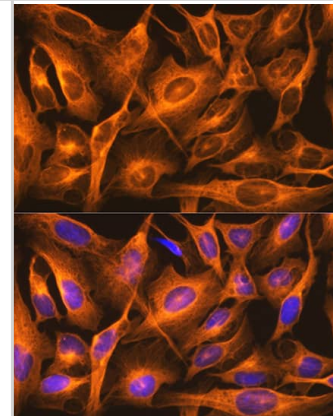
Blocking buffer: 3% nonfat dry milk in TBST.

Detection: ECL Basic Kit .

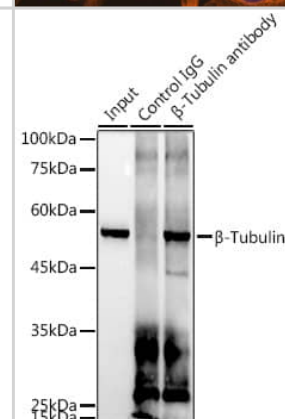
Exposure time: 20s.



Immunocytochemistry/ Immunofluorescence: beta Tubulin Antibody (4E9G8) [beta Tubulin] - Immunofluorescence analysis of U2OS cells using beta Tubulin Rabbit mAb at dilution of 1:100. Blue: DAPI for nuclear staining.



Immunoprecipitation: beta Tubulin Antibody (4E9G8) [beta Tubulin] - Immunoprecipitation analysis of 300 ug extracts of 293T cells using 3 ug beta Tubulin antibody . Western blot was performed from the immunoprecipitate using beta Tubulin antibody at a dilution of 1:1000.





Novus Biologicals USA

10730 E. Briarwood Avenue
Centennial, CO 80112
USA
Phone: 303.730.1950
Toll Free: 1.888.506.6887
Fax: 303.730.1966
nb-customerservice@bio-techne.com

Bio-Techne Canada

21 Canmotor Ave
Toronto, ON M8Z 4E6
Canada
Phone: 905.827.6400
Toll Free: 855.668.8722
Fax: 905.827.6402
canada.inquires@bio-techne.com

Bio-Techne Ltd

19 Barton Lane
Abingdon Science Park
Abingdon, OX14 3NB, United Kingdom
Phone: (44) (0) 1235 529449
Free Phone: 0800 37 34 15
Fax: (44) (0) 1235 533420
info.EMEA@bio-techne.com

General Contact Information

www.novusbio.com
Technical Support: nb-technical@bio-techne.com
Orders: nb-customerservice@bio-techne.com
General: novus@novusbio.com

Products Related to NBP3-15439-100ul

NBP2-33376H	Blue Marker Antibody (6F4-F6) [HRP]
HAF008	Goat anti-Rabbit IgG Secondary Antibody [HRP]
NB7160	Goat anti-Rabbit IgG (H+L) Secondary Antibody [HRP]
NBP2-24891	Rabbit IgG Isotype Control

Limitations

This product is for research use only and is not approved for use in humans or in clinical diagnosis. Primary Antibodies are guaranteed for 1 year from date of receipt.

For more information on our 100% guarantee, please visit www.novusbio.com/guarantee

Earn gift cards/discounts by submitting a review: www.novusbio.com/reviews/submit/NBP3-15439

Earn gift cards/discounts by submitting a publication using this product:
www.novusbio.com/publications

