

Product Datasheet

Ku70/XRCC6 Antibody (8L6B6)

NBP3-15358-100ul

Unit Size: 100 ul

Store at -20C. Avoid freeze-thaw cycles.

www.novusbio.com



technical@novusbio.com

Protocols, Publications, Related Products, Reviews, Research Tools and Images at:
www.novusbio.com/NBP3-15358

Updated 9/9/2025 v.20.1

Earn rewards for product
reviews and publications.

Submit a publication at www.novusbio.com/publications

Submit a review at www.novusbio.com/reviews/destination/NBP3-15358



NBP3-15358-100ul

Ku70/XRCC6 Antibody (8L6B6)

Product Information	
Unit Size	100 ul
Concentration	Please see the vial label for concentration. If unlisted please contact technical services.
Storage	Store at -20C. Avoid freeze-thaw cycles.
Clonality	Monoclonal
Clone	8L6B6
Preservative	0.02% Sodium Azide
Isotype	IgG
Purity	Affinity purified
Buffer	PBS (pH 7.3), 50% glycerol, 0.05% BSA
Target Molecular Weight	70 kDa

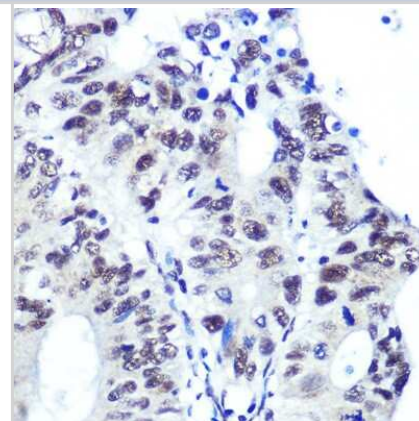
Product Description	
Description	Novus Biologicals Rabbit Ku70/XRCC6 Antibody (8L6B6) (NBP3-15358) is a recombinant monoclonal antibody validated for use in IHC, WB, ELISA and ICC/IF. All Novus Biologicals antibodies are covered by our 100% guarantee.
Host	Rabbit
Gene ID	2547
Gene Symbol	XRCC6
Species	Human, Mouse
Immunogen	A synthetic peptide corresponding to a sequence within amino acids 500-609 of human Ku70/XRCC6 (P12956). PEQAVDLTLPKVEAMNKRLGSLVDEFKELVYPPDYNPEGKVTKRKHDNEGSG SKRPKVEYSEEELKTHISKGTLGKFTVPMLKEACRAYGLKSGLKKQELLEALTK HFQD

Product Application Details	
Applications	Western Blot, Immunohistochemistry-Paraffin, ELISA, Immunocytochemistry/Immunofluorescence, Immunohistochemistry
Recommended Dilutions	Western Blot 1:6000 - 1:36000, ELISA Recommended starting concentration is 1 µg/mL. Please optimize the concentration based on your specific assay requirements., Immunohistochemistry 1:200 - 1:800, Immunocytochemistry/Immunofluorescence 1:100 - 1:1000, Immunohistochemistry-Paraffin 1:200 - 1:800

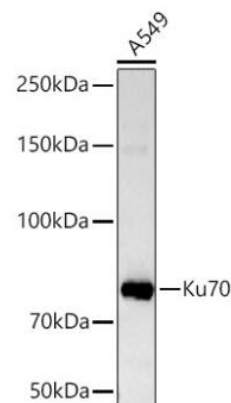


Images

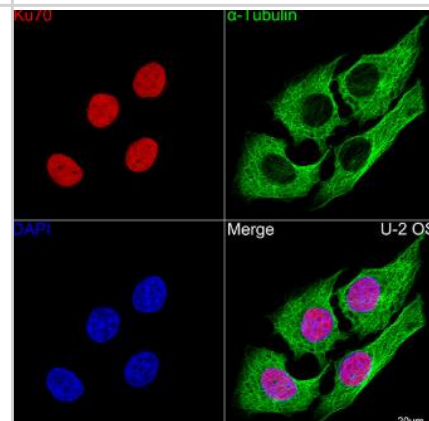
Immunohistochemistry-Paraffin: Ku70/XRCC6 Antibody (8L6B6) [NBP3-15358] - Immunohistochemistry of paraffin-embedded human colon carcinoma using Ku70/XRCC6 Rabbit mAb (NBP3-15358) at dilution of 1:100 (40x lens). Perform microwave antigen retrieval with 10 mM PBS buffer pH 7.2 before commencing with IHC staining protocol.



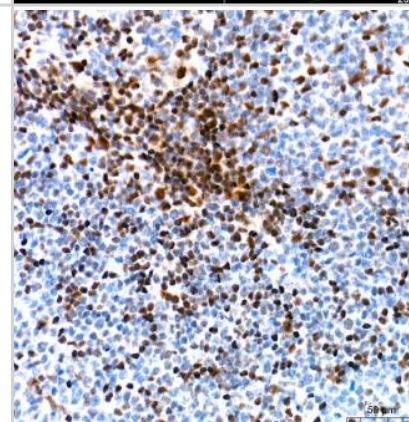
Western Blot: Ku70/XRCC6 Antibody (8L6B6) [NBP3-15358] - Analysis of lysates from A-549 cells using Ku70 Rabbit mAb at 1:6000 dilution incubated overnight at 4°C. Secondary antibody: HRP-conjugated Goat anti-Rabbit IgG (H+L) at 1:10000 dilution. Lysates/proteins: 25 µg per lane. Blocking buffer: 3% nonfat dry milk in TBST. Detection: ECL Basic Kit. Exposure time: 10s.



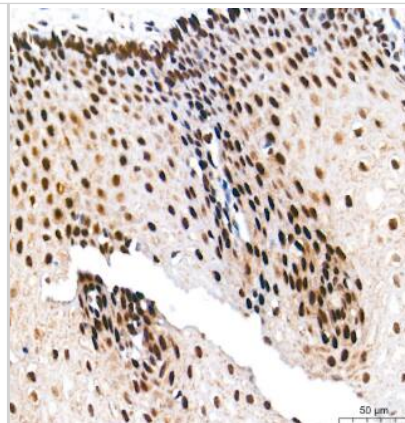
Immunocytochemistry/Immunofluorescence: Ku70/XRCC6 Antibody (8L6B6) [NBP3-15358] -Confocal imaging of U-2 OS cells using Ku70 Rabbit mAb (dilution 1:100)(Red). The cells were counterstained with α-Tubulin Mouse mAb (dilution 1:400) (Green). DAPI was used for nuclear staining (blue). Objective: 100x.



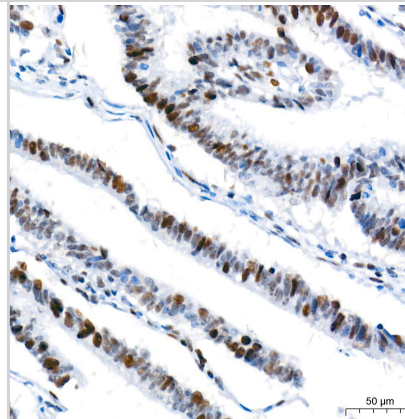
Immunohistochemistry-Paraffin: Ku70/XRCC6 Antibody (8L6B6) [NBP3-15358] -Analysis of paraffin-embedded Human tonsil tissue using Ku70 Rabbit mAb at a dilution of 1:500 (40x lens). High pressure antigen retrieval performed with 0.01M Tris-EDTA Buffer (pH 9.0) prior to IHC staining.



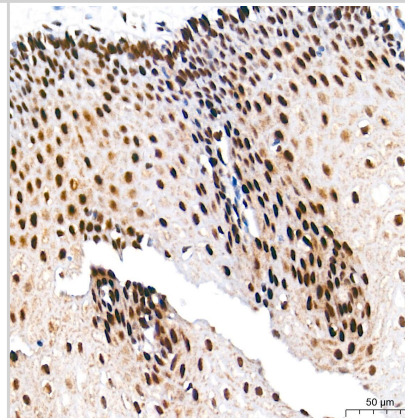
Immunohistochemistry-Paraffin: Ku70/XRCC6 Antibody (8L6B6) [NBP3-15358] -Analysis of paraffin-embedded Human esophagus tissue using Ku70 Rabbit mAb at a dilution of 1:500 (40x lens). High pressure antigen retrieval performed with 0.01M Tris-EDTA Buffer (pH 9.0) prior to IHC staining.



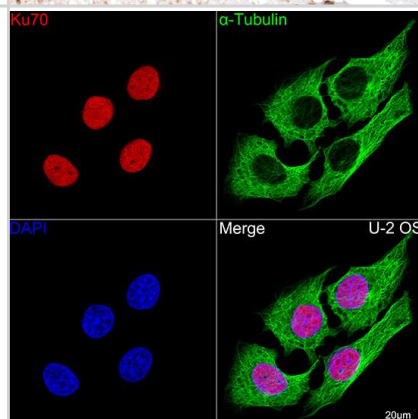
Immunohistochemistry: Ku70/XRCC6 Antibody (8L6B6) [Ku70/XRCC6] - Immunohistochemistry analysis of paraffin-embedded Human colon carcinoma tissue using Ku70/XRCC6 Rabbit mAb at a dilution of 1:500 (40x lens). High pressure antigen retrieval performed with 0.01M Tris-EDTA Buffer (pH 9.0) prior to IHC staining.



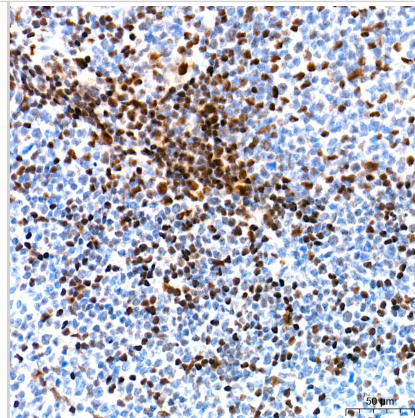
Immunohistochemistry: Ku70/XRCC6 Antibody (8L6B6) [Ku70/XRCC6] - Immunohistochemistry analysis of paraffin-embedded Human esophagus tissue using Ku70/XRCC6 Rabbit mAb at a dilution of 1:500 (40x lens). High pressure antigen retrieval performed with 0.01M Tris-EDTA Buffer (pH 9.0) prior to IHC staining.



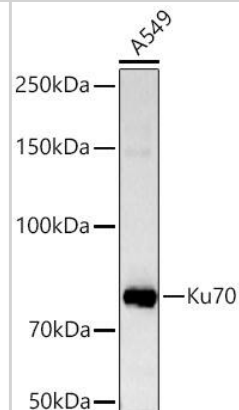
Immunocytochemistry/ Immunofluorescence: Ku70/XRCC6 Antibody (8L6B6) [Ku70/XRCC6] - Confocal imaging of U-2 OS cells using Ku70/XRCC6 Rabbit mAb . The cells were counterstained with alpha-Tubulin Mouse mAb (Green). DAPI was used for nuclear staining (blue). Objective: 100x.



Immunohistochemistry: Ku70/XRCC6 Antibody (8L6B6) [Ku70/XRCC6] - Immunohistochemistry analysis of paraffin-embedded Human tonsil tissue using Ku70/XRCC6 Rabbit mAb at a dilution of 1:500 (40x lens). High pressure antigen retrieval performed with 0.01M Tris-EDTA Buffer (pH 9.0) prior to IHC staining.



Western Blot: Ku70/XRCC6 Antibody (8L6B6) [Ku70/XRCC6] - Western blot analysis of lysates from A-549 cells using Ku70/XRCC6 Rabbit mAb at 1:6000 dilution incubated overnight at 4C. Secondary antibody: HRP-conjugated Goat anti-Rabbit IgG (H+L) at 1:10000 dilution. Lysates/proteins: 25 ug per lane. Blocking buffer: 3% nonfat dry milk in TBST. Detection: ECL Basic Kit . Exposure time: 10s.





Novus Biologicals USA

10730 E. Briarwood Avenue
Centennial, CO 80112
USA
Phone: 303.730.1950
Toll Free: 1.888.506.6887
Fax: 303.730.1966
nb-customerservice@bio-techne.com

Bio-Techne Canada

21 Canmotor Ave
Toronto, ON M8Z 4E6
Canada
Phone: 905.827.6400
Toll Free: 855.668.8722
Fax: 905.827.6402
canada.inquires@bio-techne.com

Bio-Techne Ltd

19 Barton Lane
Abingdon Science Park
Abingdon, OX14 3NB, United Kingdom
Phone: (44) (0) 1235 529449
Free Phone: 0800 37 34 15
Fax: (44) (0) 1235 533420
info.EMEA@bio-techne.com

General Contact Information

www.novusbio.com
Technical Support: nb-technical@bio-techne.com
Orders: nb-customerservice@bio-techne.com
General: novus@novusbio.com

Products Related to NBP3-15358-100ul

NBP2-33376H	Blue Marker Antibody (6F4-F6) [HRP]
HAF008	Goat anti-Rabbit IgG Secondary Antibody [HRP]
NB7160	Goat anti-Rabbit IgG (H+L) Secondary Antibody [HRP]
NBP2-24891	Rabbit IgG Isotype Control

Limitations

This product is for research use only and is not approved for use in humans or in clinical diagnosis. Primary Antibodies are guaranteed for 1 year from date of receipt.

For more information on our 100% guarantee, please visit www.novusbio.com/guarantee

Earn gift cards/discounts by submitting a review: www.novusbio.com/reviews/submit/NBP3-15358

Earn gift cards/discounts by submitting a publication using this product:
www.novusbio.com/publications

