

Product Datasheet

MMP-14/MT1-MMP Antibody (6T7L3) NBP3-15247-100ul

Unit Size: 100 ul

Store at -20C. Avoid freeze-thaw cycles.

www.novusbio.com



technical@novusbio.com

Protocols, Publications, Related Products, Reviews, Research Tools and Images at:
www.novusbio.com/NBP3-15247

Updated 3/4/2026 v.20.1

Earn rewards for product
reviews and publications.

Submit a publication at www.novusbio.com/publications

Submit a review at www.novusbio.com/reviews/destination/NBP3-15247



NBP3-15247-100ul

MMP-14/MT1-MMP Antibody (6T7L3)

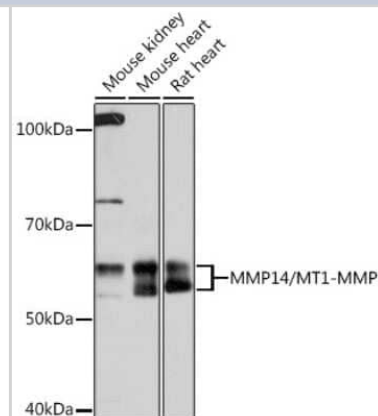
Product Information	
Unit Size	100 ul
Concentration	Please see the vial label for concentration. If unlisted please contact technical services.
Storage	Store at -20C. Avoid freeze-thaw cycles.
Clonality	Monoclonal
Clone	6T7L3
Preservative	0.02% Sodium Azide
Isotype	IgG
Purity	Affinity purified
Buffer	PBS (pH 7.3), 50% glycerol, 0.05% BSA

Product Description	
Host	Rabbit
Gene ID	4323
Gene Symbol	MMP14
Species	Human, Mouse, Rat
Immunogen	A synthetic peptide corresponding to a sequence within amino acids 100-200 of human MMP-14/MT1-MMP (P50281). GAEIKANVRRKRYAIQGLKWQHNEITFCIQNYTPKVGGEYATYEAIRKAFRVWES ATPLRFREVPYAYIREGHEKQADIMIFFAEGFHGDSTPFDGEGGFLA

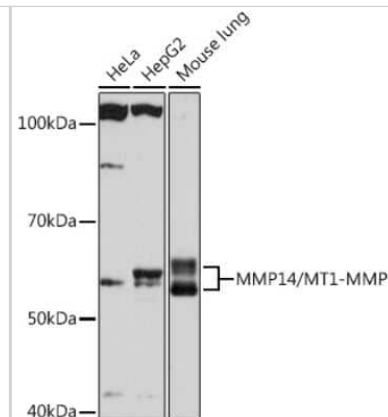
Product Application Details	
Applications	Western Blot
Recommended Dilutions	Western Blot 1:500 - 1:2000

Images

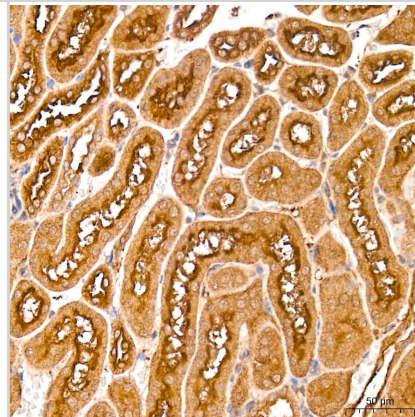
Western Blot: MMP-14/MT1-MMP Antibody (6T7L3) [NBP3-15247] - Western blot analysis of extracts of various cell lines, using MMP14/MMP-14/MT1-MMP Rabbit mAb (NBP3-15247) at 1:1000 dilution. Secondary antibody: HRP Goat Anti-Rabbit IgG (H+L) at 1:10000 dilution. Lysates/proteins: 25ug per lane. Blocking buffer: 3% nonfat dry milk in TBST. Detection: ECL Basic Kit. Exposure time: 90s.



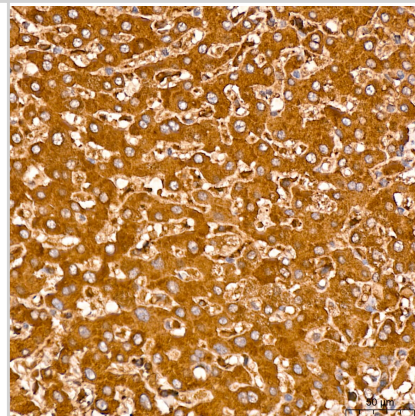
Western Blot: MMP-14/MT1-MMP Antibody (6T7L3) [NBP3-15247] - Western blot analysis of extracts of various cell lines, using MMP14/MMP-14/MT1-MMP Rabbit mAb (NBP3-15247) at 1:1000 dilution. Secondary antibody: HRP Goat Anti-Rabbit IgG (H+L) at 1:10000 dilution. Lysates/proteins: 25ug per lane. Blocking buffer: 3% nonfat dry milk in TBST. Detection: ECL Basic Kit. Exposure time: 10s.



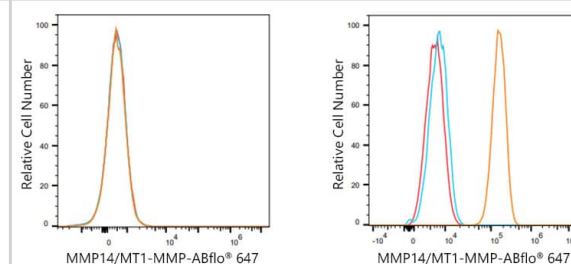
Immunohistochemistry: MMP-14/MT1-MMP Antibody (6T7L3) [MMP-14/MT1-MMP] - Immunohistochemistry analysis of paraffin-embedded Mouse kidney tissue using MMP-14/MT1-MMP Rabbit mAb at a dilution of 1:200 (40x lens). High pressure antigen retrieval performed with 0.01M Citrate Bufferr (pH 6.0) prior to IHC staining.



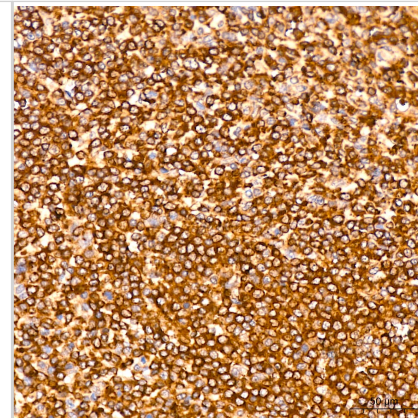
Immunohistochemistry: MMP-14/MT1-MMP Antibody (6T7L3) [MMP-14/MT1-MMP] - Immunohistochemistry analysis of paraffin-embedded Human liver tissue using MMP-14/MT1-MMP Rabbit mAb at a dilution of 1:200 (40x lens). High pressure antigen retrieval performed with 0.01M Citrate Bufferr (pH 6.0) prior to IHC staining.



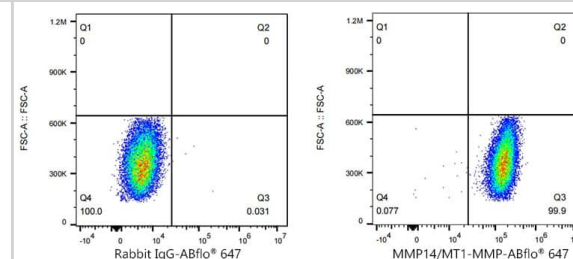
Flow Cytometry: MMP-14/MT1-MMP Antibody (6T7L3) [MMP-14/MT1-MMP] - Flow cytometry: 1×10^6 MCF7 cells (negative control, left) and HT-1080 cells were intracellularly-stained with MMP-14/MT1-MMP Rabbit mAb or ABflo 488 Rabbit IgG isotype control, followed by Alexa Fluor 488 conjugated goat anti-rabbit pAb staining. Non-fluorescently stained cells were used as blank control.



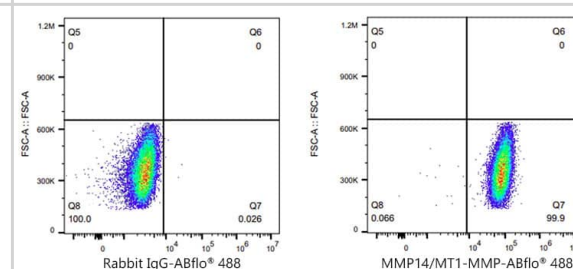
Immunohistochemistry: MMP-14/MT1-MMP Antibody (6T7L3) [MMP-14/MT1-MMP] - Immunohistochemistry analysis of paraffin-embedded Human spleen tissue using MMP-14/MT1-MMP Rabbit mAb at a dilution of 1:200 (40x lens). High pressure antigen retrieval performed with 0.01M Citrate Bufferr (pH 6.0) prior to IHC staining.



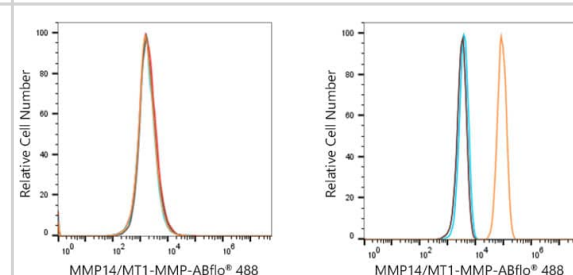
Flow Cytometry: MMP-14/MT1-MMP Antibody (6T7L3) [MMP-14/MT1-MMP] - Flow cytometry: 1×10^6 MCF7 cells (negative control, left) and HT-1080 cells were intracellularly-stained with MMP-14/MT1-MMP Rabbit mAb or ABflo 647 Rabbit IgG isotype control, followed by Alexa Fluor 647 conjugated goat anti-rabbit pAb staining. Non-fluorescently stained cells were used as blank control.



Flow Cytometry: MMP-14/MT1-MMP Antibody (6T7L3) [MMP-14/MT1-MMP] - Flow cytometry: 1×10^6 MCF7 cells (negative control, left) and HT-1080 cells were intracellularly-stained with MMP-14/MT1-MMP Rabbit mAb or ABflo 647 Rabbit IgG isotype control, followed by Alexa Fluor 647 conjugated goat anti-rabbit pAb staining. Non-fluorescently stained cells were used as blank control.



Flow Cytometry: MMP-14/MT1-MMP Antibody (6T7L3) [MMP-14/MT1-MMP] - Flow cytometry: 1×10^6 MCF7 cells (negative control, left) and HT-1080 cells were intracellularly-stained with MMP-14/MT1-MMP Rabbit mAb or ABflo 488 Rabbit IgG isotype control, followed by Alexa Fluor 488 conjugated goat anti-rabbit pAb staining. Non-fluorescently stained cells were used as blank control.





Novus Biologicals USA

10730 E. Briarwood Avenue
Centennial, CO 80112
USA
Phone: 303.730.1950
Toll Free: 1.888.506.6887
Fax: 303.730.1966
nb-customerservice@bio-techne.com

Bio-Techne Canada

21 Canmotor Ave
Toronto, ON M8Z 4E6
Canada
Phone: 905.827.6400
Toll Free: 855.668.8722
Fax: 905.827.6402
canada.inquires@bio-techne.com

Bio-Techne Ltd

19 Barton Lane
Abingdon Science Park
Abingdon, OX14 3NB, United Kingdom
Phone: (44) (0) 1235 529449
Free Phone: 0800 37 34 15
Fax: (44) (0) 1235 533420
info.EMEA@bio-techne.com

General Contact Information

www.novusbio.com
Technical Support: nb-technical@bio-techne.com
Orders: nb-customerservice@bio-techne.com
General: novus@novusbio.com

Products Related to NBP3-15247-100ul

HAF008	Goat anti-Rabbit IgG Secondary Antibody [HRP]
NB7160	Goat anti-Rabbit IgG (H+L) Secondary Antibody [HRP]
NBP2-24891	Rabbit IgG Isotype Control
NBP2-61379-1mg	Recombinant Human MMP-14/MT1-MMP Protein

Limitations

This product is for research use only and is not approved for use in humans or in clinical diagnosis. Primary Antibodies are guaranteed for 1 year from date of receipt.

For more information on our 100% guarantee, please visit www.novusbio.com/guarantee

Earn gift cards/discounts by submitting a review: www.novusbio.com/reviews/submit/NBP3-15247

Earn gift cards/discounts by submitting a publication using this product:
www.novusbio.com/publications

