

# Product Datasheet

## PKM2 Antibody (7B2) - BSA Free NBP3-15230

Unit Size: 100 ul

Store at -20 to -70C. Avoid freeze-thaw cycles.

[www.novusbio.com](http://www.novusbio.com)



[technical@novusbio.com](mailto:technical@novusbio.com)

Protocols, Publications, Related Products, Reviews, Research Tools and Images at:  
[www.novusbio.com/NBP3-15230](http://www.novusbio.com/NBP3-15230)

Updated 2/24/2026 v.20.1

Earn rewards for product  
reviews and publications.

Submit a publication at [www.novusbio.com/publications](http://www.novusbio.com/publications)

Submit a review at [www.novusbio.com/reviews/destination/NBP3-15230](http://www.novusbio.com/reviews/destination/NBP3-15230)



**NBP3-15230**

PKM2 Antibody (7B2) - BSA Free

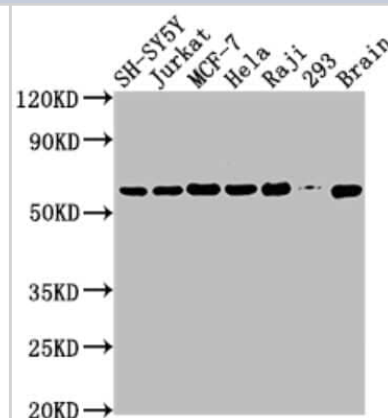
Product Information	
Unit Size	100 ul
Concentration	Please see the vial label for concentration. If unlisted please contact technical services.
Storage	Store at -20 to -70C. Avoid freeze-thaw cycles.
Clonality	Monoclonal
Clone	7B2
Preservative	0.02% Sodium Azide
Isotype	IgG
Purity	Affinity purified
Buffer	PBS, pH 7.4, 150mM NaCl, and 50% glycerol

Product Description	
Description	Novus Biologicals Rabbit PKM2 Antibody (7B2) - BSA Free (NBP3-15230) is a recombinant monoclonal antibody validated for use in IHC, WB, ELISA, Flow, ICC/IF and IP. All Novus Biologicals antibodies are covered by our 100% guarantee.
Host	Rabbit
Gene ID	5315
Gene Symbol	PKM
Species	Human, Mouse
Immunogen	A synthesized peptide derived from human PKM2. UniProt ID (P14618).

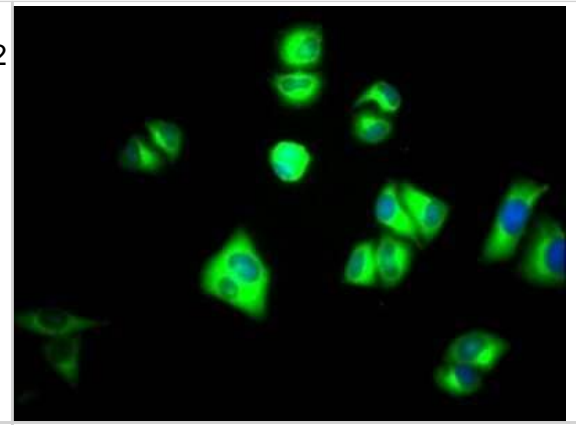
Product Application Details	
Applications	Western Blot, ELISA, Flow Cytometry, Immunocytochemistry/ Immunofluorescence, Immunohistochemistry, Immunoprecipitation
Recommended Dilutions	Western Blot 1:500-1:5000, Flow Cytometry, ELISA, Immunohistochemistry 1:50-1:200, Immunocytochemistry/ Immunofluorescence 1:20-1:200, Immunoprecipitation

**Images**

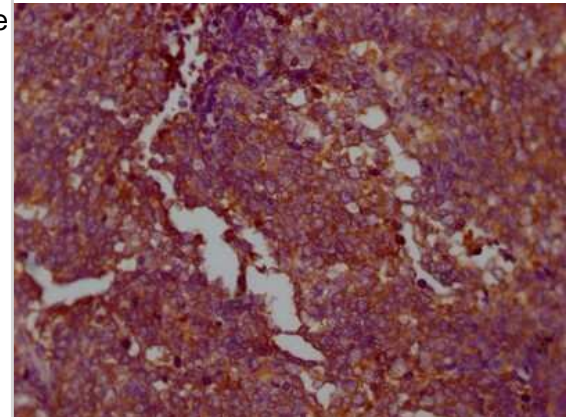
Western Blot: PKM2 Antibody (7B2) [NBP3-15230] - Positive WB detected in: SH-SY5Y whole cell lysate, Jurkat whole cell lysate, MCF-7 whole cell lysate, HeLa whole cell lysate, Raji whole cell lysate, 293 whole cell lysate, Mouse brain tissue. All lanes: PKM2 antibody at 1:2000. Secondary: Goat polyclonal to rabbit IgG at 1/50000 dilution. Predicted band size: 58, 59, 57 KDa. Observed band size: 58 KDa.



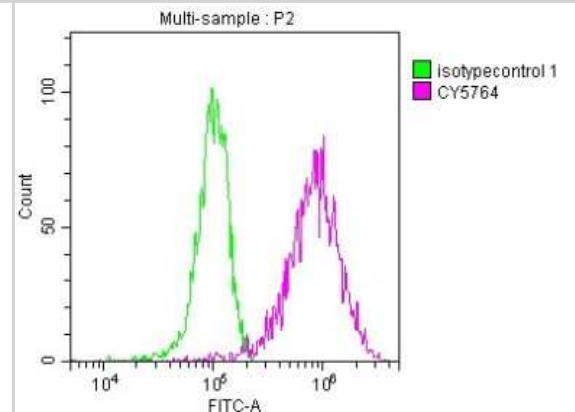
**Immunocytochemistry/Immunofluorescence: PKM2 Antibody (7B2) [NBP3-15230]** - Immunofluorescence staining of Hela Cells with at PKM2 antibody 1:50, counter-stained with DAPI. The cells were fixed in 4% formaldehyde, permeated by 0.2% TritonX-100, and blocked in 10% normal Goat Serum. The cells were then incubated with the antibody overnight at 4C. Nuclear DNA was labeled in blue with DAPI. The secondary antibody was FITC-conjugated Goat Anti-Rabbit IgG (H+L).



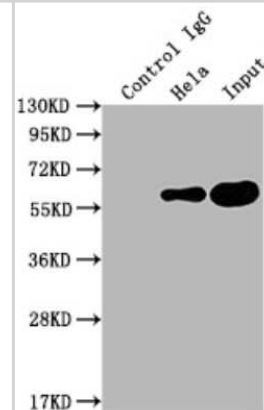
**Immunohistochemistry: PKM2 Antibody (7B2) [NBP3-15230]** - IHC image of PKM2 antibody diluted at 1:100 and staining in paraffin-embedded human lung cancer. After dewaxing and hydration, antigen retrieval was mediated by high pressure in a citrate buffer (pH 6.0). Section was blocked with 10% normal goat serum 30 minutes at RT. Then primary antibody (1% BSA) was incubated at 4C overnight. The primary is detected by a Goat anti-rabbit IgG polymer labeled by HRP and visualized using 0.05% DAB.



**Flow Cytometry: PKM2 Antibody (7B2) [NBP3-15230]** - Overlay histogram showing HepG2 cells stained with PKM2 antibody (red line) at 1:50. The cells were fixed with 70% Ethylalcohol (18h) and then incubated in 10% normal goat serum to block non-specific protein-protein interactions followed by the antibody (1ug/1\*10<sup>6</sup>cells) for 1 h at 4C. The secondary antibody used was FITC-conjugated goat anti-rabbit IgG (H+L) at 1/200 dilution for 30min at 4C. Control antibody (green line) was Rabbit IgG (1ug/1\*10<sup>6</sup>cells) used under the same conditions. Acquisition of >10,000 events was performed.



**Immunoprecipitation: PKM2 Antibody (7B2) [NBP3-15230]** - Immunoprecipitating PKM2 in Hela whole cell lysate. Lane 1: Rabbit control IgG instead of PKM2 antibody in Hela whole cell lysate. For western blotting, a HRP-conjugated Protein G antibody was used as the secondary antibody (1/2000). Lane 2: PKM2 antibody (2ug)+ Hela whole cell lysate (500ug). Lane 3: Hela whole cell lysate (10ug).





### **Novus Biologicals USA**

10730 E. Briarwood Avenue  
Centennial, CO 80112  
USA  
Phone: 303.730.1950  
Toll Free: 1.888.506.6887  
Fax: 303.730.1966  
nb-customerservice@bio-techne.com

### **Bio-Techne Canada**

21 Canmotor Ave  
Toronto, ON M8Z 4E6  
Canada  
Phone: 905.827.6400  
Toll Free: 855.668.8722  
Fax: 905.827.6402  
canada.inquires@bio-techne.com

### **Bio-Techne Ltd**

19 Barton Lane  
Abingdon Science Park  
Abingdon, OX14 3NB, United Kingdom  
Phone: (44) (0) 1235 529449  
Free Phone: 0800 37 34 15  
Fax: (44) (0) 1235 533420  
info.EMEA@bio-techne.com

### **General Contact Information**

www.novusbio.com  
Technical Support: nb-technical@bio-techne.com  
Orders: nb-customerservice@bio-techne.com  
General: novus@novusbio.com

### **Products Related to NBP3-15230**

---

NBP2-33376H	Blue Marker Antibody (6F4-F6) [HRP]
HAF008	Goat anti-Rabbit IgG Secondary Antibody [HRP]
NB7160	Goat anti-Rabbit IgG (H+L) Secondary Antibody [HRP]
NBP2-24891	Rabbit IgG Isotype Control

---

### **Limitations**

This product is for research use only and is not approved for use in humans or in clinical diagnosis. Primary Antibodies are guaranteed for 1 year from date of receipt.

For more information on our 100% guarantee, please visit [www.novusbio.com/guarantee](http://www.novusbio.com/guarantee)

Earn gift cards/discounts by submitting a review: [www.novusbio.com/reviews/submit/NBP3-15230](http://www.novusbio.com/reviews/submit/NBP3-15230)

Earn gift cards/discounts by submitting a publication using this product:  
[www.novusbio.com/publications](http://www.novusbio.com/publications)

