

# Product Datasheet

## EpCAM/TROP1 Antibody (BLR077G) NBP3-14685

Unit Size: 100 ul

Store at 2 - 8 C / 1 year from date of receipt

[www.novusbio.com](http://www.novusbio.com)



[technical@novusbio.com](mailto:technical@novusbio.com)

Protocols, Publications, Related Products, Reviews, Research Tools and Images at:  
[www.novusbio.com/NBP3-14685](http://www.novusbio.com/NBP3-14685)

Updated 2/24/2026 v.20.1

Earn rewards for product  
reviews and publications.

Submit a publication at [www.novusbio.com/publications](http://www.novusbio.com/publications)

Submit a review at [www.novusbio.com/reviews/destination/NBP3-14685](http://www.novusbio.com/reviews/destination/NBP3-14685)



**NBP3-14685****EpCAM/TROP1 Antibody (BLR077G)**

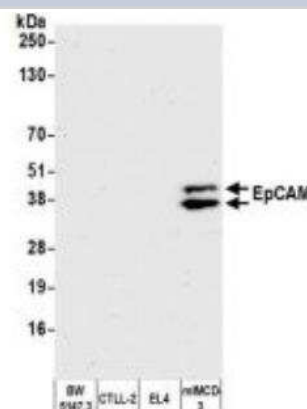
<b>Product Information</b>	
<b>Unit Size</b>	100 ul
<b>Concentration</b>	Please see the vial label for concentration. If unlisted please contact technical services.
<b>Storage</b>	Store at 2 - 8 C / 1 year from date of receipt
<b>Clonality</b>	Monoclonal
<b>Clone</b>	BLR077G
<b>Preservative</b>	0.09% Sodium Azide
<b>Purity</b>	>95%
<b>Buffer</b>	Borate Buffered Saline (BBS) pH 8.2 with 0.1% BSA and

<b>Product Description</b>	
<b>Description</b>	Novus Biologicals Rabbit EpCAM/TROP1 Antibody (BLR077G) (NBP3-14685) is a recombinant monoclonal antibody validated for use in IHC, WB, ICC/IF and IP. All Novus Biologicals antibodies are covered by our 100% guarantee.
<b>Host</b>	Rabbit
<b>Gene ID</b>	4072
<b>Gene Symbol</b>	EPCAM
<b>Species</b>	Human, Mouse
<b>Immunogen</b>	between 264 and 314 (C-term)

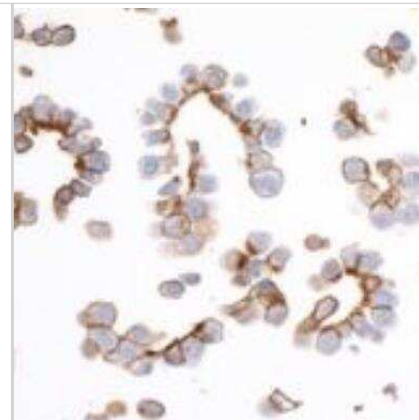
<b>Product Application Details</b>	
<b>Applications</b>	Western Blot, Immunohistochemistry-Paraffin, Immunocytochemistry/ Immunofluorescence, Immunohistochemistry, Immunoprecipitation
<b>Recommended Dilutions</b>	Western Blot 1:1000, Immunohistochemistry 1:100 - 1:500, Immunocytochemistry/ Immunofluorescence 1:100 - 1:500, Immunoprecipitation 12 ul/1 mg lysate, Immunohistochemistry-Paraffin 1:100 - 1:500
<b>Application Notes</b>	Epitope retrieval with citrate buffer pH6.0 is recommended for FFPE tissue sections.

**Images**

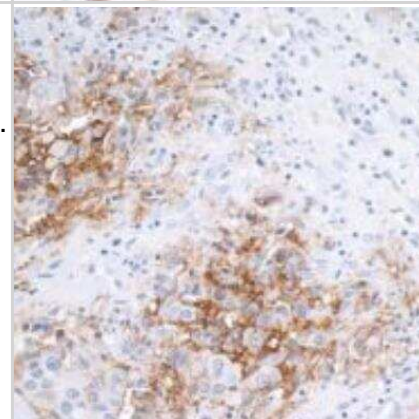
Western Blot: EpCAM/TROP1 Antibody (BLR077G) [NBP3-14685] - Whole cell lysate (50 ug) from BW5147.3, CTLL-2, EL4, and mIMCD-3 cells prepared using NETN lysis buffer. Antibody: Rabbit anti-EpCAM recombinant monoclonal antibody [BLR077G] used at 1:1000. Secondary: HRP-conjugated goat anti-rabbit IgG. Chemiluminescence with an exposure time of 30 seconds.



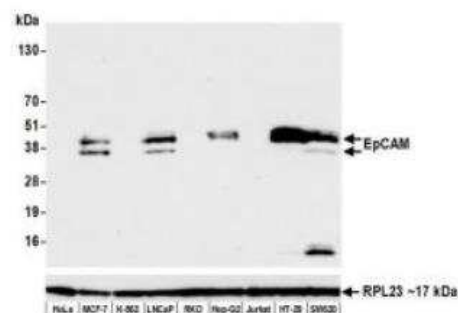
Immunocytochemistry/Immunofluorescence: EpCAM/TROP1 Antibody (BLR077G) [NBP3-14685] - Section of OVCAR-3 cells. Antibody: Rabbit anti-EpCAM recombinant monoclonal antibody [BLR077G] used at 1:100. Secondary: HRP-conjugated goat anti-rabbit IgG Substrate: DAB



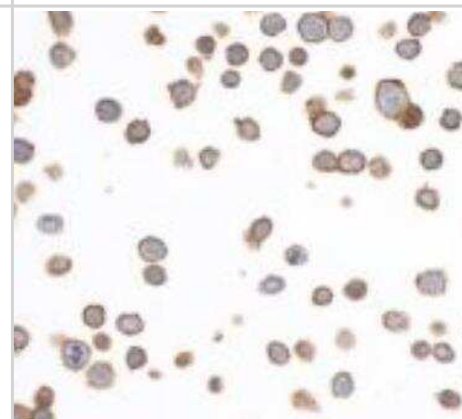
Immunohistochemistry-Paraffin: EpCAM/TROP1 Antibody (BLR077G) [NBP3-14685] - Section of human breast carcinoma. Antibody: Rabbit anti-EpCAM recombinant monoclonal antibody [BLR077G] used at 1:100. Secondary: HRP-conjugated goat anti-rabbit IgG. Substrate: DAB.



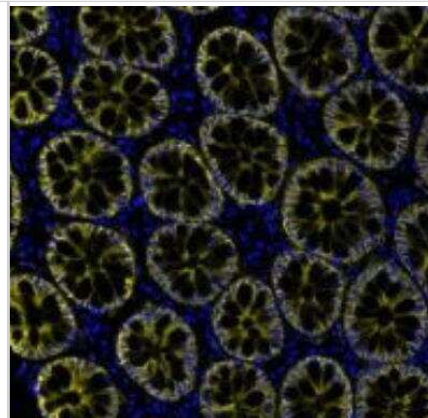
Western Blot: EpCAM/TROP1 Antibody (BLR077G) [NBP3-14685] - Whole cell lysate (50 ug) from HeLa, MCF-7, K-562, LNCaP, RKO, Hep-G2, Jurkat, HT-29, and SW620 cells prepared using NETN lysis buffer. Antibody: Rabbit anti-EpCAM recombinant monoclonal antibody [BLR077G] used at 1:1000. Secondary: HRP-conjugated goat anti-rabbit IgG. Chemiluminescence with an exposure time of 10 seconds. Lower Panel: Rabbit antiRPL23.



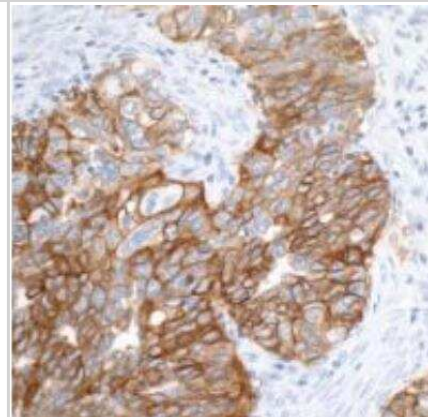
Immunocytochemistry/Immunofluorescence: EpCAM/TROP1 Antibody (BLR077G) [NBP3-14685] - Section of HT-29 cells. Antibody: Rabbit anti-EpCAM recombinant monoclonal antibody [BLR077G] used at 1:100. Secondary: HRP-conjugated goat anti-rabbit IgG. Substrate: DA



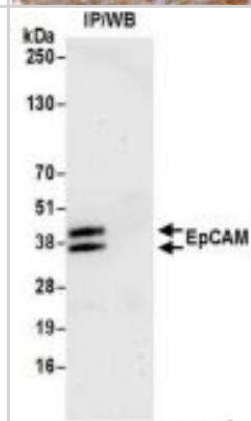
Immunohistochemistry-Paraffin: EpCAM/TROP1 Antibody (BLR077G) [NBP3-14685] - Rabbit anti-EpCAM recombinant monoclonal antibody [BLR077G]. Secondary: HRP-conjugated goat anti-rabbit IgG. Substrate: Opal™. Counterstain: DAPI.



Immunohistochemistry-Paraffin: EpCAM/TROP1 Antibody (BLR077G) [NBP3-14685] - Human ovarian carcinoma. Antibody: Rabbit anti-EpCAM recombinant monoclonal antibody [BLR077G] used at 1:100. Secondary: HRP-conjugated goat anti-rabbit IgG (A120-501P). Substrate: DA



Immunoprecipitation: EpCAM/TROP1 Antibody [NBP3-14685] - Whole cell lysate (1.0 mg per IP reaction; 20% of IP loaded) from MCF-7 cells prepared using NETN lysis buffer. Antibody: Rabbit antiEpCAM recombinant monoclonal antibody used at 12 ul per reaction. For blotting immunoprecipitated EpCAM was used at 1:1000. Chemiluminescence with an exposure time of 30 seconds.





### **Novus Biologicals USA**

10730 E. Briarwood Avenue  
Centennial, CO 80112  
USA  
Phone: 303.730.1950  
Toll Free: 1.888.506.6887  
Fax: 303.730.1966  
nb-customerservice@bio-techne.com

### **Bio-Techne Canada**

21 Canmotor Ave  
Toronto, ON M8Z 4E6  
Canada  
Phone: 905.827.6400  
Toll Free: 855.668.8722  
Fax: 905.827.6402  
canada.inquires@bio-techne.com

### **Bio-Techne Ltd**

19 Barton Lane  
Abingdon Science Park  
Abingdon, OX14 3NB, United Kingdom  
Phone: (44) (0) 1235 529449  
Free Phone: 0800 37 34 15  
Fax: (44) (0) 1235 533420  
info.EMEA@bio-techne.com

### **General Contact Information**

www.novusbio.com  
Technical Support: nb-technical@bio-techne.com  
Orders: nb-customerservice@bio-techne.com  
General: novus@novusbio.com

### **Products Related to NBP3-14685**

---

NBP2-33376H	Blue Marker Antibody (6F4-F6) [HRP]
HAF008	Goat anti-Rabbit IgG Secondary Antibody [HRP]
NB7160	Goat anti-Rabbit IgG (H+L) Secondary Antibody [HRP]
NBP2-52190-0.05mg	Recombinant Human EpCAM/TROP1 His Protein

---

### **Limitations**

This product is for research use only and is not approved for use in humans or in clinical diagnosis. Primary Antibodies are guaranteed for 1 year from date of receipt.

For more information on our 100% guarantee, please visit [www.novusbio.com/guarantee](http://www.novusbio.com/guarantee)

Earn gift cards/discounts by submitting a review: [www.novusbio.com/reviews/submit/NBP3-14685](http://www.novusbio.com/reviews/submit/NBP3-14685)

Earn gift cards/discounts by submitting a publication using this product:  
[www.novusbio.com/publications](http://www.novusbio.com/publications)

