

# Product Datasheet

## CA19-9/Sialyl Lewis A Antibody (GT8510) - Azide and BSA Free NBP3-13652

Unit Size: 100 ul

Store at 4C short term. Aliquot and store at -20C long term. Avoid freeze-thaw cycles.

[www.novusbio.com](http://www.novusbio.com)



[technical@novusbio.com](mailto:technical@novusbio.com)

Protocols, Publications, Related Products, Reviews, Research Tools and Images at:  
[www.novusbio.com/NBP3-13652](http://www.novusbio.com/NBP3-13652)

Updated 3/3/2025 v.20.1

Earn rewards for product reviews and publications.

Submit a publication at [www.novusbio.com/publications](http://www.novusbio.com/publications)

Submit a review at [www.novusbio.com/reviews/destination/NBP3-13652](http://www.novusbio.com/reviews/destination/NBP3-13652)



**NBP3-13652**

CA19-9/Sialyl Lewis A Antibody (GT8510) - Azide and BSA Free

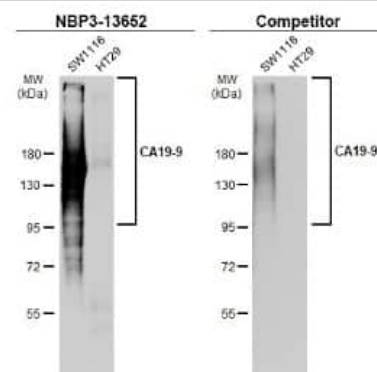
Product Information	
Unit Size	100 ul
Concentration	Concentrations vary lot to lot. See vial label for concentration. If unlisted please contact technical services.
Storage	Store at 4C short term. Aliquot and store at -20C long term. Avoid freeze-thaw cycles.
Clonality	Monoclonal
Clone	GT8510
Preservative	No Preservative
Isotype	IgG1
Purity	Protein G purified
Buffer	PBS, 20% Glycerol

Product Description	
Description	Centrifuge briefly prior to opening.
Host	Mouse
Species	Human
Immunogen	The immunogen used to generate this antibody corresponds to CA19-9/Sialyl Lewis A.

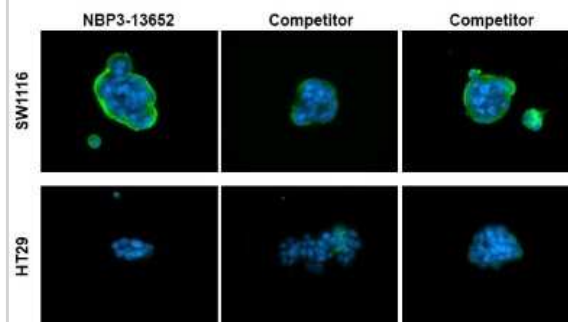
Product Application Details	
Applications	Western Blot, Immunohistochemistry-Paraffin, ELISA, Flow Cytometry, Immunocytochemistry/ Immunofluorescence, Immunohistochemistry, Sandwich ELISA
Recommended Dilutions	Western Blot 1:1000, Flow Cytometry, ELISA, Immunohistochemistry, Immunocytochemistry/ Immunofluorescence, Immunohistochemistry-Paraffin, Sandwich ELISA
Application Notes	ICC/IF, IHC-P, FACS, ELISA-Assay dependent.

**Images**

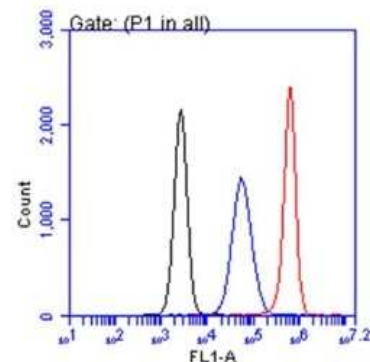
Western Blot: CA19-9/Sialyl Lewis A Antibody (GT8510) [NBP3-13652] - Various whole cell extracts (30 ug) were separated by 7.5% SDS-PAGE, and the membranes were blotted with Ca19-9 antibody [GT8510] (NBP3-13652) diluted at 1:1000 and competitor's antibody diluted at 1:250. The HRP-conjugated anti-mouse IgG antibody (NBP2-19382) was used to detect the primary antibody.



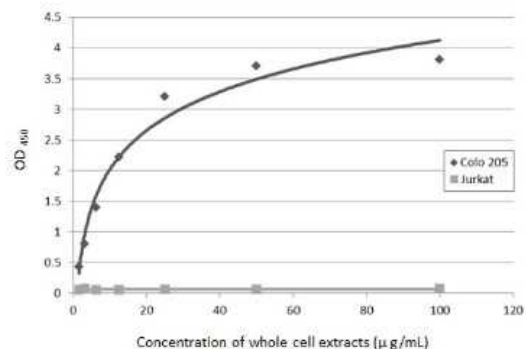
**Immunocytochemistry/Immunofluorescence:** CA19-9/Sialyl Lewis A Antibody (GT8510) [NBP3-13652] - Ca19-9 antibody [GT8510] detects CA19-9/Sialyl Lewis A protein at cell membrane by immunofluorescent analysis. Sample: SW1116 (high expression) and HT29 (low expression) cells were fixed in 4% paraformaldehyde at RT for 15 min. Green: CA19-9/Sialyl Lewis A stained by Ca19-9 antibody [GT8510] (NBP3-13652) diluted at 1:1000 and competitor's antibody diluted at 1:1000. Blue: Fluoroshield with DAPI.



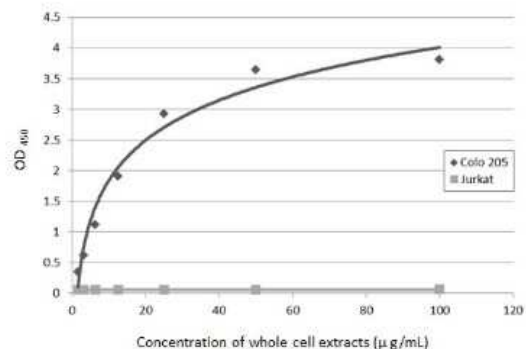
**Flow Cytometry:** CA19-9/Sialyl Lewis A Antibody (GT8510) [NBP3-13652] - Ca19-9 antibody [GT8510] (NBP3-13652) detects Ca19-9 by flow cytometry analysis. Sample: COLO 205 cell. Black: Unlabelled sample was used as a control. Red: Ca19-9 antibody [GT8510] (NBP3-13652) dilution: 1:50. Blue: Highly cited antibody [116-NS-19-9] dilution: 1:50. Acquisition of 20,000 events were collected for FACS analysis.



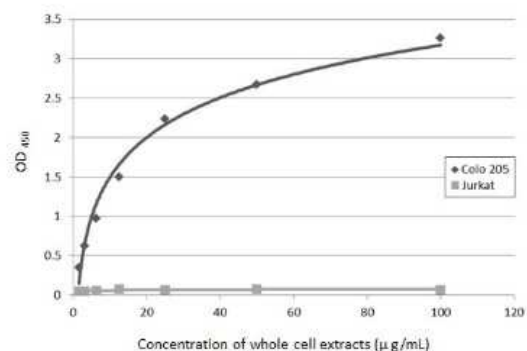
**Sandwich ELISA:** CA19-9/Sialyl Lewis A Antibody (GT8510) [NBP3-13652] - Sandwich ELISA detection of Colo 205 and Jurkat whole cell extracts using CA19-9/Sialyl Lewis A antibody (NBP3-13650) as capture antibody at concentration of 5 ug/mL and HRP-conjugated Ca19-9 antibody [GT8510] (NBP3-13652) as detection antibody at concentration of 1 ug/mL. Please notice that NBP3-13652 needs to be conjugated to HRP to function as the detection antibody when paired with NBP3-13650. Please contact us for custom HRP-conjugated antibody.



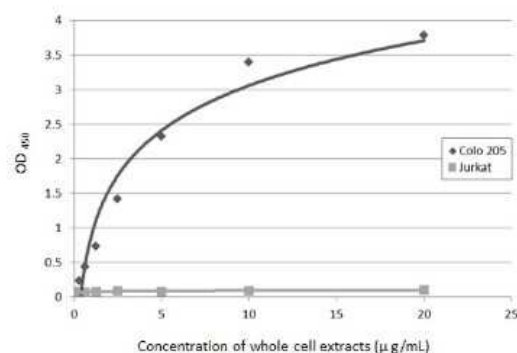
**Sandwich ELISA:** CA19-9/Sialyl Lewis A Antibody (GT8510) [NBP3-13652] - Sandwich ELISA detection of Colo 205 and Jurkat whole cell extracts using CA19-9/Sialyl Lewis A antibody [GT174] (NBP3-13649) as capture antibody at concentration of 5 ug/mL and HRP-conjugated Ca19-9 antibody [GT8510] (NBP3-13652) as detection antibody at concentration of 1 ug/mL. Please notice that NBP3-13652 needs to be conjugated to HRP to function as the detection antibody when paired with NBP3-13649. Please contact us for custom HRP-conjugated antibody.



Sandwich ELISA: CA19-9/Sialyl Lewis A Antibody (GT8510) [NBP3-13652] - Sandwich ELISA detection of Colo 205 and Jurkat whole cell extracts using CA19-9/Sialyl Lewis A antibody [GT252] (NBP3-13651) as capture antibody at concentration of 5 ug/mL and HRP-conjugated Ca19-9 antibody [GT8510] (NBP3-13652) as detection antibody at concentration of 1 ug/mL. Please notice that NBP3-13652 needs to be conjugated to HRP to function as the detection antibody when paired with NBP3-13651. Please contact us for custom HRP-conjugated antibody.



Sandwich ELISA: CA19-9/Sialyl Lewis A Antibody (GT8510) [NBP3-13652] - Sandwich ELISA detection of Colo 205 and Jurkat whole cell extracts using CA19-9/Sialyl Lewis A antibody [GT8510] (NBP3-13652) as capture antibody at concentration of 5 ug/mL and HRP-conjugated CA19-9/Sialyl Lewis A antibody [GT933] (NBP3-13650) as detection antibody at concentration of 1 ug/mL. Please notice that NBP3-13650 needs to be conjugated to HRP to function as the detection antibody when paired with NBP3-13652. Please contact us for custom HRP-conjugated antibody.





### **Novus Biologicals USA**

10730 E. Briarwood Avenue  
Centennial, CO 80112  
USA  
Phone: 303.730.1950  
Toll Free: 1.888.506.6887  
Fax: 303.730.1966  
nb-customerservice@bio-techne.com

### **Bio-Techne Canada**

21 Canmotor Ave  
Toronto, ON M8Z 4E6  
Canada  
Phone: 905.827.6400  
Toll Free: 855.668.8722  
Fax: 905.827.6402  
canada.inquires@bio-techne.com

### **Bio-Techne Ltd**

19 Barton Lane  
Abingdon Science Park  
Abingdon, OX14 3NB, United Kingdom  
Phone: (44) (0) 1235 529449  
Free Phone: 0800 37 34 15  
Fax: (44) (0) 1235 533420  
info.EMEA@bio-techne.com

### **General Contact Information**

www.novusbio.com  
Technical Support: nb-technical@bio-techne.com  
Orders: nb-customerservice@bio-techne.com  
General: novus@novusbio.com

### **Products Related to NBP3-13652**

---

HAF007	Goat anti-Mouse IgG Secondary Antibody [HRP]
NB720-B	Rabbit anti-Mouse IgG (H+L) Secondary Antibody [Biotin]
NBP1-97005-0.5mg	Mouse IgG1 Isotype Control (MG1)
NBP2-59963-1Kit	Human CA19-9/Sialyl Lewis A ELISA Kit (Colorimetric)

---

### **Limitations**

This product is for research use only and is not approved for use in humans or in clinical diagnosis. Primary Antibodies are guaranteed for 1 year from date of receipt.

For more information on our 100% guarantee, please visit [www.novusbio.com/guarantee](http://www.novusbio.com/guarantee)

Earn gift cards/discounts by submitting a review: [www.novusbio.com/reviews/submit/NBP3-13652](http://www.novusbio.com/reviews/submit/NBP3-13652)

Earn gift cards/discounts by submitting a publication using this product:  
[www.novusbio.com/publications](http://www.novusbio.com/publications)

