

# Product Datasheet

## non-muscle heavy chain 10 Myosin Antibody (GT246) NBP3-13591

Unit Size: 100 ul

Store at 4C short term. Aliquot and store at -20C long term. Avoid freeze-thaw cycles.

[www.novusbio.com](http://www.novusbio.com)



[technical@novusbio.com](mailto:technical@novusbio.com)

Protocols, Publications, Related Products, Reviews, Research Tools and Images at:  
[www.novusbio.com/NBP3-13591](http://www.novusbio.com/NBP3-13591)

Updated 6/14/2023 v.20.1

Earn rewards for product  
reviews and publications.

Submit a publication at [www.novusbio.com/publications](http://www.novusbio.com/publications)

Submit a review at [www.novusbio.com/reviews/destination/NBP3-13591](http://www.novusbio.com/reviews/destination/NBP3-13591)



**NBP3-13591**

non-muscle heavy chain 10 Myosin Antibody (GT246)

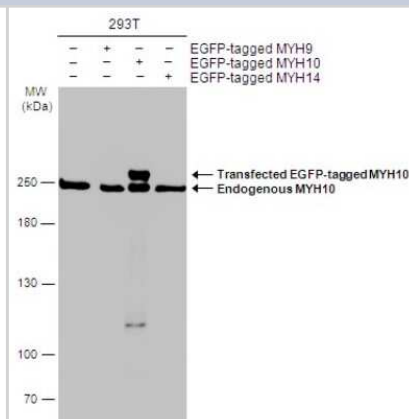
| Product Information |  |
|---------------------|--|
| Unit Size           | 100 ul   |
| Concentration       | Concentrations vary lot to lot. See vial label for concentration. If unlisted please contact technical services. |
| Storage             | Store at 4C short term. Aliquot and store at -20C long term. Avoid freeze-thaw cycles.                           |
| Clonality           | Monoclonal   |
| Clone               | GT246  |
| Preservative        | No Preservative  |
| Isotype             | IgG2b  |
| Purity              | Protein A purified   |
| Buffer              | PBS  |

| Product Description |   |
|---------------------|---|
| Description         | Centrifuge briefly prior to opening.  |
| Host                | Mouse   |
| Gene ID             | 4628  |
| Gene Symbol         | MYH10   |
| Species             | Human, Mouse, Rat   |
| Immunogen           | Carrier-protein conjugated synthetic peptide encompassing a sequence within the N-terminus region of human non-muscle heavy chain 10 Myosin. The exact sequence is proprietary. |

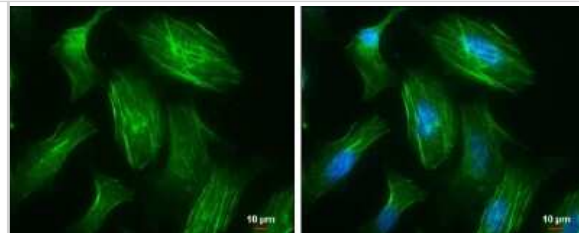
| Product Application Details |   |
|-----------------------------|---|
| Applications                | Western Blot, Immunocytochemistry/ Immunofluorescence, Immunohistochemistry, Immunohistochemistry-Frozen, Immunohistochemistry-Paraffin |
| Recommended Dilutions       | Western Blot, Immunohistochemistry, Immunocytochemistry/ Immunofluorescence, Immunohistochemistry-Paraffin, Immunohistochemistry-Frozen |

**Images**

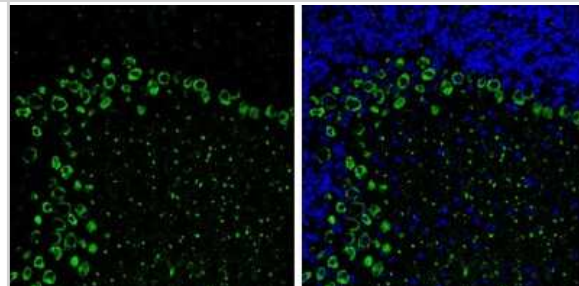
Western Blot: non-muscle heavy chain 10 Myosin Antibody (GT246) [NBP3-13591] - Non-transfected (-) and transfected (+) 293T whole cell extracts (30 ug) were separated by 5% SDS-PAGE, and the membrane was blotted with non-muscle heavy chain 10 Myosin antibody [GT246] (NBP3-13591) diluted at 1:3000. The HRP-conjugated anti-mouse IgG antibody (NBP2-19382) was used to detect the primary antibody.



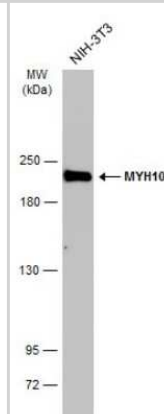
Immunocytochemistry/Immunofluorescence: non-muscle heavy chain 10 Myosin Antibody (GT246) [NBP3-13591] - non-muscle heavy chain 10 Myosin antibody [GT246] detects non-muscle heavy chain 10 Myosin protein at cytoskeleton by immunofluorescent analysis. Sample: HeLa cells were fixed in 4% paraformaldehyde at RT for 15 min. Green: non-muscle heavy chain 10 Myosin protein stained by non-muscle heavy chain 10 Myosin antibody [GT246] (NBP3-13591) diluted at 1:500. Blue: Hoechst 33342 staining. Scale bar = 10  $\mu$ m.



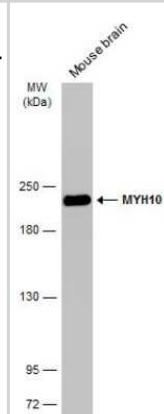
Immunohistochemistry-Frozen: non-muscle heavy chain 10 Myosin Antibody (GT246) [NBP3-13591] - non-muscle heavy chain 10 Myosin antibody [GT246] detects non-muscle heavy chain 10 Myosin Protein expression by immunohistochemical analysis. Sample: Frozen-sectioned adult mouse cerebellum. Green: non-muscle heavy chain 10 Myosin stained by non-muscle heavy chain 10 Myosin antibody [GT246] (NBP3-13591) diluted at 1:250. Blue: Fluoroshield with DAPI. Antigen Retrieval: Citrate buffer, pH 6.0, 10 min



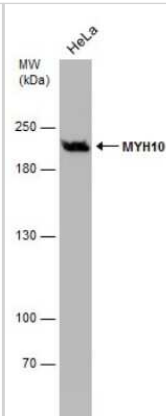
Western Blot: non-muscle heavy chain 10 Myosin Antibody (GT246) [NBP3-13591] - Whole cell extract (30  $\mu$ g) was separated by 5% SDS-PAGE, and the membrane was blotted with non-muscle heavy chain 10 Myosin antibody [GT246] (NBP3-13591) diluted at 1:5000. The HRP-conjugated anti-mouse IgG antibody (NBP2-19382) was used to detect the primary antibody.



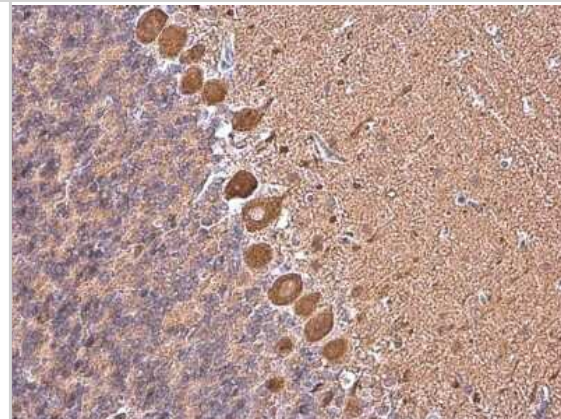
Western Blot: non-muscle heavy chain 10 Myosin Antibody (GT246) [NBP3-13591] - Mouse tissue extract (50  $\mu$ g) was separated by 5% SDS-PAGE, and the membrane was blotted with non-muscle heavy chain 10 Myosin antibody [GT246] (NBP3-13591) diluted at 1:5000. The HRP-conjugated anti-mouse IgG antibody (NBP2-19382) was used to detect the primary antibody.



Western Blot: non-muscle heavy chain 10 Myosin Antibody (GT246) [NBP3-13591] - Whole cell extract (30 ug) was separated by 5% SDS-PAGE, and the membrane was blotted with non-muscle heavy chain 10 Myosin antibody [GT246] (NBP3-13591) diluted at 1:5000.



Immunohistochemistry-Paraffin: non-muscle heavy chain 10 Myosin Antibody (GT246) [NBP3-13591] - non-muscle heavy chain 10 Myosin antibody [GT246] detects non-muscle heavy chain 10 Myosin protein at cytoplasm in rat brain by immunohistochemical analysis. Sample: Paraffin-embedded rat brain. non-muscle heavy chain 10 Myosin antibody [GT246] (NBP3-13591) diluted at 1:200. Antigen Retrieval: Citrate buffer, pH 6.0, 15 min





### **Novus Biologicals USA**

10730 E. Briarwood Avenue  
Centennial, CO 80112  
USA  
Phone: 303.730.1950  
Toll Free: 1.888.506.6887  
Fax: 303.730.1966  
nb-customerservice@bio-techne.com

### **Bio-Techne Canada**

21 Canmotor Ave  
Toronto, ON M8Z 4E6  
Canada  
Phone: 905.827.6400  
Toll Free: 855.668.8722  
Fax: 905.827.6402  
canada.inquires@bio-techne.com

### **Bio-Techne Ltd**

19 Barton Lane  
Abingdon Science Park  
Abingdon, OX14 3NB, United Kingdom  
Phone: (44) (0) 1235 529449  
Free Phone: 0800 37 34 15  
Fax: (44) (0) 1235 533420  
info.EMEA@bio-techne.com

### **General Contact Information**

www.novusbio.com  
Technical Support: nb-technical@bio-techne.com  
Orders: nb-customerservice@bio-techne.com  
General: novus@novusbio.com

### **Products Related to NBP3-13591**

---

|               |  |
|---------------|--|
| HAF007        | Goat anti-Mouse IgG Secondary Antibody [HRP]                 |
| NB720-B       | Rabbit anti-Mouse IgG (H+L) Secondary Antibody [Biotin]      |
| NBP2-27231    | Mouse IgG2b Isotype Control (MPC-11)                         |
| NBP2-38824PEP | non-muscle heavy chain 10 Myosin Recombinant Protein Antigen |

---

### **Limitations**

This product is for research use only and is not approved for use in humans or in clinical diagnosis. Primary Antibodies are guaranteed for 1 year from date of receipt.

For more information on our 100% guarantee, please visit [www.novusbio.com/guarantee](http://www.novusbio.com/guarantee)

Earn gift cards/discounts by submitting a review: [www.novusbio.com/reviews/submit/NBP3-13591](http://www.novusbio.com/reviews/submit/NBP3-13591)

Earn gift cards/discounts by submitting a publication using this product:  
[www.novusbio.com/publications](http://www.novusbio.com/publications)

