

Product Datasheet

non-muscle heavy chain 10 Myosin Antibody (GT324) - Azide and BSA Free NBP3-13583

Unit Size: 100 ul

Store at 4C short term. Aliquot and store at -20C long term. Avoid freeze-thaw cycles.

www.novusbio.com



technical@novusbio.com

Protocols, Publications, Related Products, Reviews, Research Tools and Images at:
www.novusbio.com/NBP3-13583

Updated 3/3/2025 v.20.1

Earn rewards for product
reviews and publications.

Submit a publication at www.novusbio.com/publications

Submit a review at www.novusbio.com/reviews/destination/NBP3-13583



NBP3-13583

non-muscle heavy chain 10 Myosin Antibody (GT324) - Azide and BSA Free

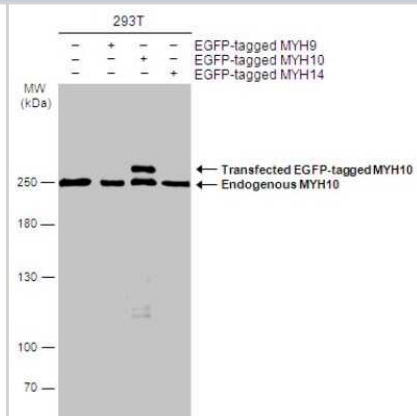
Product Information	
Unit Size	100 ul
Concentration	Concentrations vary lot to lot. See vial label for concentration. If unlisted please contact technical services.
Storage	Store at 4C short term. Aliquot and store at -20C long term. Avoid freeze-thaw cycles.
Clonality	Monoclonal
Clone	GT324
Preservative	No Preservative
Isotype	IgG1
Purity	Protein G purified
Buffer	PBS

Product Description	
Description	Centrifuge briefly prior to opening.
Host	Mouse
Gene ID	4628
Gene Symbol	MYH10
Species	Human, Mouse, Rat
Immunogen	Carrier-protein conjugated synthetic peptide encompassing a sequence within the N-terminus region of human non-muscle heavy chain 10 Myosin. The exact sequence is proprietary.

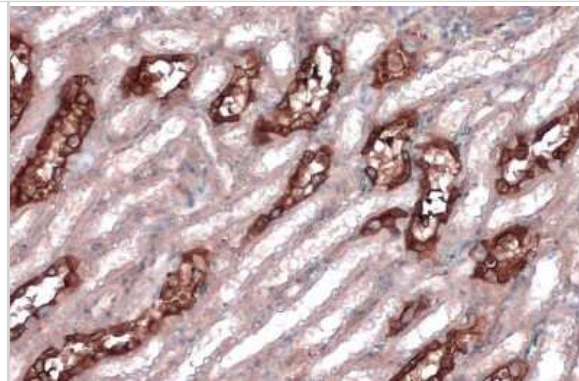
Product Application Details	
Applications	Western Blot, Immunohistochemistry-Paraffin, Immunohistochemistry, Immunohistochemistry-Frozen
Recommended Dilutions	Western Blot, Immunohistochemistry, Immunohistochemistry-Paraffin, Immunohistochemistry-Frozen

Images

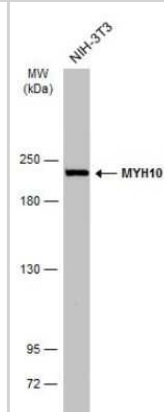
Western Blot: non-muscle heavy chain 10 Myosin Antibody (GT324) [NBP3-13583] - Non-transfected (-) and transfected (+) 293T whole cell extracts (30 ug) were separated by 5% SDS-PAGE, and the membrane was blotted with non-muscle heavy chain 10 Myosin antibody [GT324] (NBP3-13583) diluted at 1:5000. The HRP-conjugated anti-mouse IgG antibody (NBP2-19382) was used to detect the primary antibody.



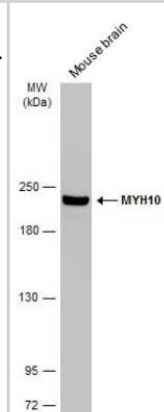
Immunohistochemistry-Paraffin: non-muscle heavy chain 10 Myosin Antibody (GT324) [NBP3-13583] - non-muscle heavy chain 10 Myosin antibody [GT324] detects non-muscle heavy chain 10 Myosin protein at cell membrane and cytoplasm by immunohistochemical analysis. Sample: Paraffin-embedded rat kidney. non-muscle heavy chain 10 Myosin stained by non-muscle heavy chain 10 Myosin antibody [GT324] (NBP3-13583) diluted at 1:200. Antigen Retrieval: Citrate buffer, pH 6.0, 15 min



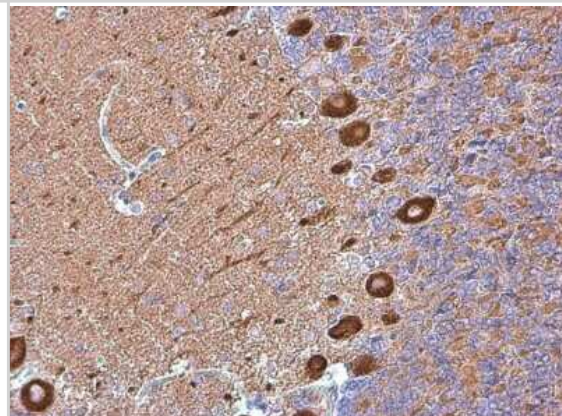
Western Blot: non-muscle heavy chain 10 Myosin Antibody (GT324) [NBP3-13583] - Whole cell extract (30 ug) was separated by 5% SDS-PAGE, and the membrane was blotted with non-muscle heavy chain 10 Myosin antibody [GT324] (NBP3-13583) diluted at 1:5000. The HRP-conjugated anti-mouse IgG antibody (NBP2-19382) was used to detect the primary antibody.



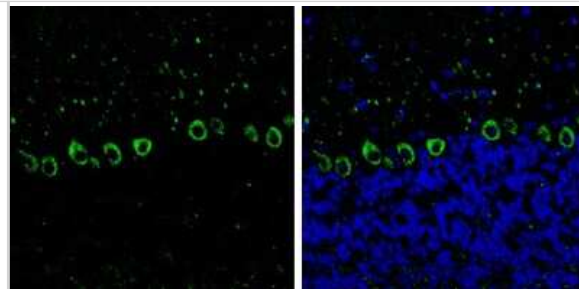
Western Blot: non-muscle heavy chain 10 Myosin Antibody (GT324) [NBP3-13583] - Mouse tissue extract (50 ug) was separated by 5% SDS-PAGE, and the membrane was blotted with non-muscle heavy chain 10 Myosin antibody [GT324] (NBP3-13583) diluted at 1:5000. The HRP-conjugated anti-mouse IgG antibody (NBP2-19382) was used to detect the primary antibody.



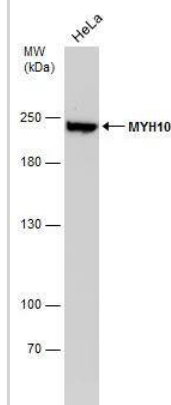
Immunohistochemistry-Paraffin: non-muscle heavy chain 10 Myosin Antibody (GT324) [NBP3-13583] - non-muscle heavy chain 10 Myosin antibody [GT324] detects non-muscle heavy chain 10 Myosin protein at cytoplasm in rat brain by immunohistochemical analysis. Sample: Paraffin-embedded rat brain. non-muscle heavy chain 10 Myosin antibody [GT324] (NBP3-13583) diluted at 1:200. Antigen Retrieval: Citrate buffer, pH 6.0, 15 min



Immunohistochemistry-Frozen: non-muscle heavy chain 10 Myosin Antibody (GT324) [NBP3-13583] - non-muscle heavy chain 10 Myosin antibody [GT324] detects non-muscle heavy chain 10 Myosin Protein expression by immunohistochemical analysis. Sample: Frozen-sectioned adult mouse cerebellum. Green: non-muscle heavy chain 10 Myosin stained by non-muscle heavy chain 10 Myosin antibody [GT324] (NBP3-13583) diluted at 1:250. Blue: Fluoroshield with DAPI. Antigen Retrieval: Citrate buffer, pH 6.0, 10 min



Whole cell extract (30 ug) was separated by 5% SDS-PAGE, and the membrane was blotted with MYH10 antibody [GT324] (NBP3-13583) diluted at 1:5000.





Novus Biologicals USA

10730 E. Briarwood Avenue
Centennial, CO 80112
USA
Phone: 303.730.1950
Toll Free: 1.888.506.6887
Fax: 303.730.1966
nb-customerservice@bio-techne.com

Bio-Techne Canada

21 Canmotor Ave
Toronto, ON M8Z 4E6
Canada
Phone: 905.827.6400
Toll Free: 855.668.8722
Fax: 905.827.6402
canada.inquires@bio-techne.com

Bio-Techne Ltd

19 Barton Lane
Abingdon Science Park
Abingdon, OX14 3NB, United Kingdom
Phone: (44) (0) 1235 529449
Free Phone: 0800 37 34 15
Fax: (44) (0) 1235 533420
info.EMEA@bio-techne.com

General Contact Information

www.novusbio.com
Technical Support: nb-technical@bio-techne.com
Orders: nb-customerservice@bio-techne.com
General: novus@novusbio.com

Products Related to NBP3-13583

HAF007	Goat anti-Mouse IgG Secondary Antibody [HRP]
NB720-B	Rabbit anti-Mouse IgG (H+L) Secondary Antibody [Biotin]
NBP1-97005-0.5mg	Mouse IgG1 Isotype Control (MG1)
NBP2-38566PEP	non-muscle heavy chain 10 Myosin Recombinant Protein Antigen

Limitations

This product is for research use only and is not approved for use in humans or in clinical diagnosis. Primary Antibodies are guaranteed for 1 year from date of receipt.

For more information on our 100% guarantee, please visit www.novusbio.com/guarantee

Earn gift cards/discounts by submitting a review: www.novusbio.com/reviews/submit/NBP3-13583

Earn gift cards/discounts by submitting a publication using this product:
www.novusbio.com/publications

