

Product Datasheet

Japanese Encephalitis virus NS1 Antibody (GT1448) - Azide and BSA Free NBP3-13568

Unit Size: 100 ul

Store at 4C short term. Aliquot and store at -20C long term. Avoid freeze-thaw cycles.

www.novusbio.com



technical@novusbio.com

Protocols, Publications, Related Products, Reviews, Research Tools and Images at:
www.novusbio.com/NBP3-13568

Updated 3/3/2025 v.20.1

Earn rewards for product
reviews and publications.

Submit a publication at www.novusbio.com/publications

Submit a review at www.novusbio.com/reviews/destination/NBP3-13568



NBP3-13568

Japanese Encephalitis virus NS1 Antibody (GT1448) - Azide and BSA Free

Product Information	
Unit Size	100 ul
Concentration	Concentrations vary lot to lot. See vial label for concentration. If unlisted please contact technical services.
Storage	Store at 4C short term. Aliquot and store at -20C long term. Avoid freeze-thaw cycles.
Clonality	Monoclonal
Clone	GT1448
Preservative	No Preservative
Isotype	IgG2b
Purity	Protein A purified
Buffer	PBS

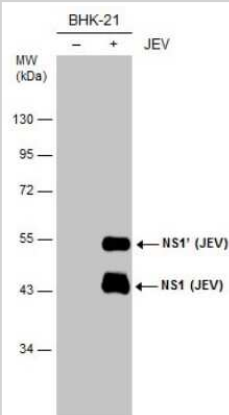
Product Description	
Description	Centrifuge briefly prior to opening.
Host	Mouse
Gene ID	1489713
Gene Symbol	POLY
Species	Virus
Reactivity Notes	Japanese encephalitis virus
Immunogen	Recombinant protein encompassing a sequence within the center region of NS1 (JEV). (Japanese Encephalitis Virus strain Jaoars982) The exact sequence is proprietary.

Product Application Details	
Applications	Western Blot, Immunocytochemistry/ Immunofluorescence
Recommended Dilutions	Western Blot 1:1000-1:10000, Immunocytochemistry/ Immunofluorescence 1:100-1:1000

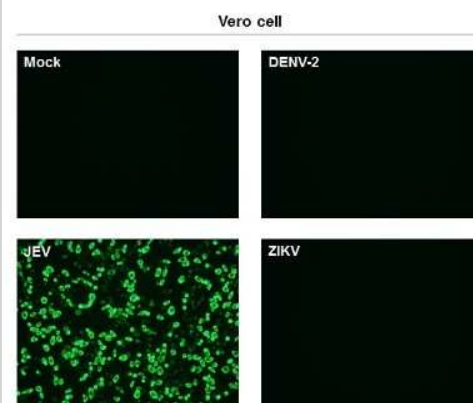


Images

Western Blot: Japanese Encephalitis virus NS1 Antibody (GT1448) [NBP3-13568] - Non-infected (-) and infected (+) BHK-21 whole cell extracts (15 ug) were separated by 10% SDS-PAGE, and the membrane was blotted with NS1 (JEV) antibody (NBP3-13568) diluted at 1:5000.



Immunocytochemistry/Immunofluorescence: Japanese Encephalitis virus NS1 Antibody (GT1448) [NBP3-13568] - Immunofluorescent analysis of non-infected and infected vero cells using NS1 (JEV) antibody [GT1448] (NBP3-13568). Green: NS1 (JEV) antibody [GT1448] (NBP3-13568) diluted at 1:500.





Novus Biologicals USA

10730 E. Briarwood Avenue
Centennial, CO 80112
USA
Phone: 303.730.1950
Toll Free: 1.888.506.6887
Fax: 303.730.1966
nb-customerservice@bio-techne.com

Bio-Techne Canada

21 Canmotor Ave
Toronto, ON M8Z 4E6
Canada
Phone: 905.827.6400
Toll Free: 855.668.8722
Fax: 905.827.6402
canada.inquires@bio-techne.com

Bio-Techne Ltd

19 Barton Lane
Abingdon Science Park
Abingdon, OX14 3NB, United Kingdom
Phone: (44) (0) 1235 529449
Free Phone: 0800 37 34 15
Fax: (44) (0) 1235 533420
info.EMEA@bio-techne.com

General Contact Information

www.novusbio.com
Technical Support: nb-technical@bio-techne.com
Orders: nb-customerservice@bio-techne.com
General: novus@novusbio.com

Products Related to NBP3-13568

HAF007	Goat anti-Mouse IgG Secondary Antibody [HRP]
NB720-B	Rabbit anti-Mouse IgG (H+L) Secondary Antibody [Biotin]
NBP2-27231	Mouse IgG2b Isotype Control (MPC-11)
9775-JV-100	Japanese Encephalitis virus NS1 [Unconjugated]

Limitations

This product is for research use only and is not approved for use in humans or in clinical diagnosis. Primary Antibodies are guaranteed for 1 year from date of receipt.

For more information on our 100% guarantee, please visit www.novusbio.com/guarantee

Earn gift cards/discounts by submitting a review: www.novusbio.com/reviews/submit/NBP3-13568

Earn gift cards/discounts by submitting a publication using this product:
www.novusbio.com/publications

