

Product Datasheet

ROCK2 Antibody (GT11712) - Azide and BSA Free NBP3-13535

Unit Size: 100 ul

Store at 4C short term. Aliquot and store at -20C long term. Avoid freeze-thaw cycles.

www.novusbio.com



technical@novusbio.com

Protocols, Publications, Related Products, Reviews, Research Tools and Images at:
www.novusbio.com/NBP3-13535

Updated 3/3/2025 v.20.1

Earn rewards for product
reviews and publications.

Submit a publication at www.novusbio.com/publications

Submit a review at www.novusbio.com/reviews/destination/NBP3-13535



NBP3-13535

ROCK2 Antibody (GT11712) - Azide and BSA Free

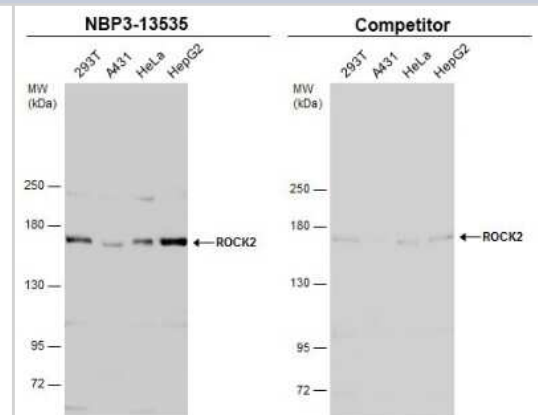
Product Information	
Unit Size	100 ul
Concentration	Concentrations vary lot to lot. See vial label for concentration. If unlisted please contact technical services.
Storage	Store at 4C short term. Aliquot and store at -20C long term. Avoid freeze-thaw cycles.
Clonality	Monoclonal
Clone	GT11712
Preservative	No Preservative
Isotype	IgG1
Purity	Protein G purified
Buffer	PBS

Product Description	
Description	Centrifuge briefly prior to opening.
Host	Mouse
Gene ID	9475
Gene Symbol	ROCK2
Species	Human, Mouse, Rat
Reactivity Notes	Xenopus laevis (81%)
Immunogen	Recombinant protein encompassing a sequence within the center region of human ROCK2. The exact sequence is proprietary.

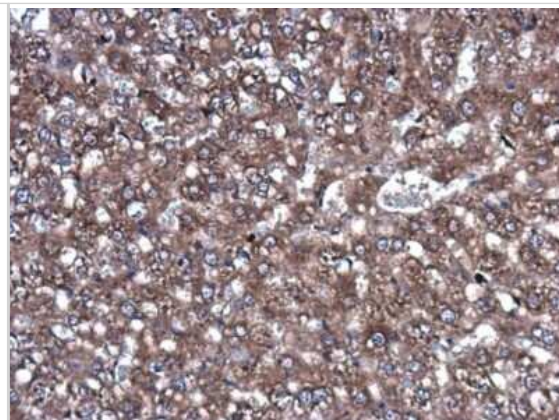
Product Application Details	
Applications	Western Blot, Immunohistochemistry-Paraffin, Immunohistochemistry
Recommended Dilutions	Western Blot, Immunohistochemistry, Immunohistochemistry-Paraffin

Images

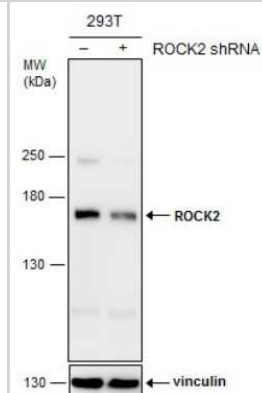
Western Blot: ROCK2 Antibody (GT11712) [NBP3-13535] - Various whole cell extracts (30 ug) were separated by 5% SDS-PAGE, and the membranes were blotted with ROCK2 antibody [GT11712] (NBP3-13535) diluted at 1:1000 and competitor's antibody diluted at 1:100. The HRP-conjugated anti-mouse IgG antibody (NBP2-19382) was used to detect the primary antibody.



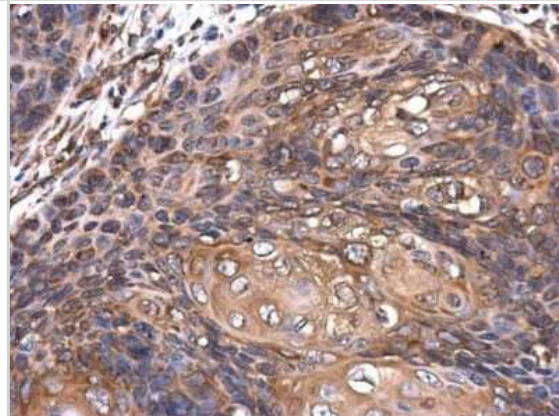
Immunohistochemistry-Paraffin: ROCK2 Antibody (GT11712) [NBP3-13535] - ROCK2 antibody [GT11712] detects ROCK2 protein at cytoplasm in rat liver by immunohistochemical analysis. Sample: Paraffin-embedded rat liver. ROCK2 antibody [GT11712] (NBP3-13535) diluted at 1:200. Antigen Retrieval: Citrate buffer, pH 6.0, 15 min



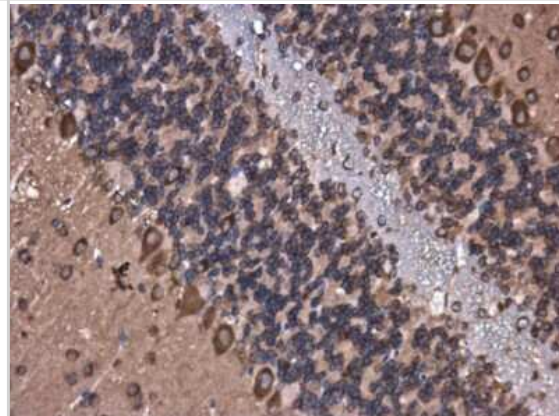
Western Blot: ROCK2 Antibody (GT11712) [NBP3-13535] - Non-transfected (-) and transfected (+) 293T whole cell extracts (30 ug) were separated by 5% SDS-PAGE, and the membrane was blotted with ROCK2 antibody [GT11712] (NBP3-13535) diluted at 1:500.



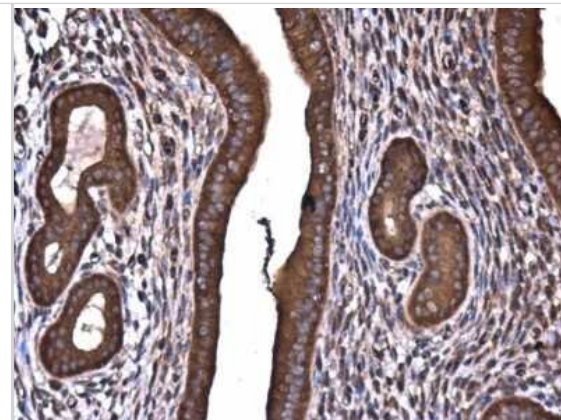
Immunohistochemistry-Paraffin: ROCK2 Antibody (GT11712) [NBP3-13535] - ROCK2 antibody [GT11712] detects ROCK2 protein at cytoplasm in human esophagus by immunohistochemical analysis. Sample: Paraffin-embedded human esophagus. ROCK2 antibody [GT11712] (NBP3-13535) diluted at 1:200. Antigen Retrieval: Citrate buffer, pH 6.0, 15 min



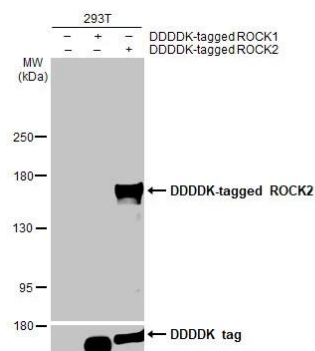
Immunohistochemistry-Paraffin: ROCK2 Antibody (GT11712) [NBP3-13535] - ROCK2 antibody [GT11712] detects ROCK2 protein at cytoplasm in mouse brain by immunohistochemical analysis. Sample: Paraffin-embedded mouse brain. ROCK2 antibody [GT11712] (NBP3-13535) diluted at 1:200. Antigen Retrieval: Citrate buffer, pH 6.0, 15 min



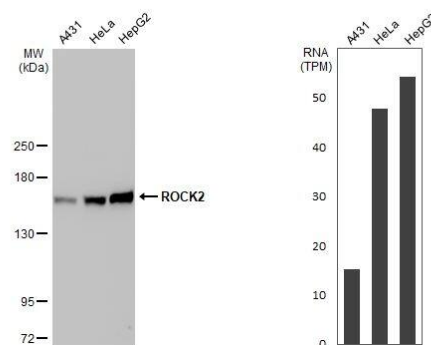
Immunohistochemistry-Paraffin: ROCK2 Antibody (GT11712) [NBP3-13535] - ROCK2 antibody [GT11712] detects ROCK2 protein at cytoplasm in mouse cervix by immunohistochemical analysis. Sample: Paraffin-embedded mouse cervix. ROCK2 antibody [GT11712] (NBP3-13535) diluted at 1:200. Antigen Retrieval: Citrate buffer, pH 6.0, 15 min



Western Blot: ROCK2 Antibody (GT11712) [NBP3-13535] - Non-transfected (-) and transfected (+) 293T whole cell extracts were separated by 5% SDS-PAGE, and the membrane was blotted with ROCK2 antibody [GT11712] (NBP3-13535) diluted at 1:5000. The HRP-conjugated anti-mouse IgG antibody was used to detect the primary antibody.



Western Blot: ROCK2 Antibody (GT11712) [NBP3-13535] - Various whole cell extracts (30 ug) were separated by 5% SDS-PAGE, and the membrane was blotted with ROCK2 antibody [GT11712] diluted at 1:1000. The HRP-conjugated anti-mouse IgG antibody was used to detect the primary antibody. Corresponding RNA expression data for the same cell lines are based on Human Protein Atlas program.





Novus Biologicals USA

10730 E. Briarwood Avenue
Centennial, CO 80112
USA
Phone: 303.730.1950
Toll Free: 1.888.506.6887
Fax: 303.730.1966
nb-customerservice@bio-techne.com

Bio-Techne Canada

21 Canmotor Ave
Toronto, ON M8Z 4E6
Canada
Phone: 905.827.6400
Toll Free: 855.668.8722
Fax: 905.827.6402
canada.inquires@bio-techne.com

Bio-Techne Ltd

19 Barton Lane
Abingdon Science Park
Abingdon, OX14 3NB, United Kingdom
Phone: (44) (0) 1235 529449
Free Phone: 0800 37 34 15
Fax: (44) (0) 1235 533420
info.EMEA@bio-techne.com

General Contact Information

www.novusbio.com
Technical Support: nb-technical@bio-techne.com
Orders: nb-customerservice@bio-techne.com
General: novus@novusbio.com

Products Related to NBP3-13535

HAF007	Goat anti-Mouse IgG Secondary Antibody [HRP]
NB720-B	Rabbit anti-Mouse IgG (H+L) Secondary Antibody [Biotin]
NBP1-97005-0.5mg	Mouse IgG1 Isotype Control (MG1)
NBP1-86124PEP	ROCK2 Recombinant Protein Antigen

Limitations

This product is for research use only and is not approved for use in humans or in clinical diagnosis. Primary Antibodies are guaranteed for 1 year from date of receipt.

For more information on our 100% guarantee, please visit www.novusbio.com/guarantee

Earn gift cards/discounts by submitting a review: www.novusbio.com/reviews/submit/NBP3-13535

Earn gift cards/discounts by submitting a publication using this product:
www.novusbio.com/publications

