

# Product Datasheet

## Cofilin Antibody (GT217) - Azide and BSA Free NBP3-13520

Unit Size: 100 ul

Store at 4C short term. Aliquot and store at -20C long term. Avoid freeze-thaw cycles.

[www.novusbio.com](http://www.novusbio.com)



[technical@novusbio.com](mailto:technical@novusbio.com)

Protocols, Publications, Related Products, Reviews, Research Tools and Images at:  
[www.novusbio.com/NBP3-13520](http://www.novusbio.com/NBP3-13520)

Updated 9/25/2025 v.20.1

Earn rewards for product  
reviews and publications.

Submit a publication at [www.novusbio.com/publications](http://www.novusbio.com/publications)

Submit a review at [www.novusbio.com/reviews/destination/NBP3-13520](http://www.novusbio.com/reviews/destination/NBP3-13520)



**NBP3-13520**

Cofilin Antibody (GT217) - Azide and BSA Free

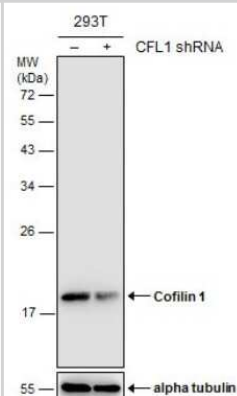
Product Information	
Unit Size	100 ul
Concentration	Concentrations vary lot to lot. See vial label for concentration. If unlisted please contact technical services.
Storage	Store at 4C short term. Aliquot and store at -20C long term. Avoid freeze-thaw cycles.
Clonality	Monoclonal
Clone	GT217
Preservative	No Preservative
Isotype	IgG2b
Purity	Protein A purified
Buffer	PBS, 20% Glycerol

Product Description	
Description	Centrifuge briefly prior to opening.
Host	Mouse
Gene ID	1072
Gene Symbol	CFL1
Species	Human, Mouse, Rat
Immunogen	Recombinant protein encompassing a sequence within the center region of human Cofilin. The exact sequence is proprietary.

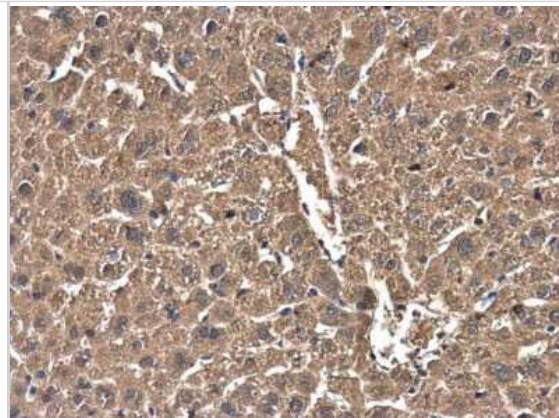
Product Application Details	
Applications	Western Blot, Immunohistochemistry-Paraffin, Immunohistochemistry, Immunoprecipitation
Recommended Dilutions	Western Blot, Immunohistochemistry, Immunoprecipitation, Immunohistochemistry-Paraffin

**Images**

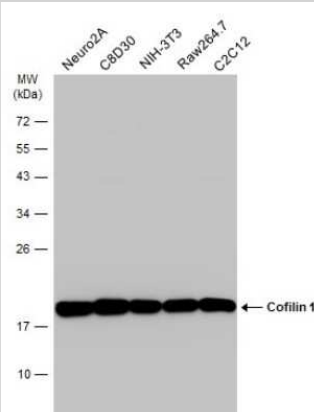
Western Blot: Cofilin Antibody (GT217) [NBP3-13520] - Non-transfected (-) and transfected (+) 293T whole cell extracts (30 ug) were separated by 12% SDS-PAGE, and the membrane was blotted with Cofilin antibody [GT217] (NBP3-13520) diluted at 1:1000.



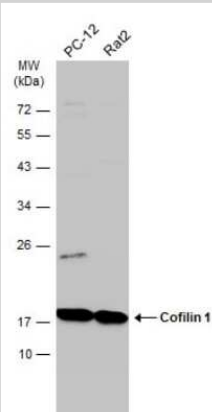
**Immunohistochemistry-Paraffin: Cofilin Antibody (GT217) [NBP3-13520]** - Cofilin antibody [GT217] detects Cofilin protein at cytoplasm in mouse liver by immunohistochemical analysis. Sample: Paraffin-embedded mouse liver. Cofilin antibody [GT217] (NBP3-13520) diluted at 1:250. Antigen Retrieval: Citrate buffer, pH 6.0, 15 min



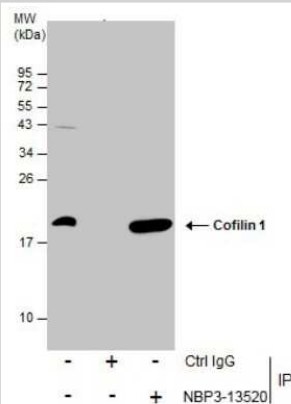
**Western Blot: Cofilin Antibody (GT217) [NBP3-13520]** - Various whole cell extracts (30 ug) were separated by 12% SDS-PAGE, and the membrane was blotted with Cofilin antibody [GT217] (NBP3-13520) diluted at 1:1000. The HRP-conjugated anti-mouse IgG antibody (NBP2-19382) was used to detect the primary antibody.



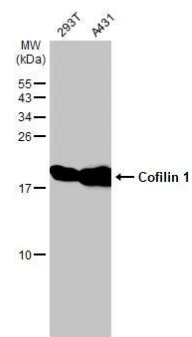
**Western Blot: Cofilin Antibody (GT217) [NBP3-13520]** - Various whole cell extracts (30 ug) were separated by 12% SDS-PAGE, and the membrane was blotted with Cofilin antibody [GT217] (NBP3-13520) diluted at 1:1000. The HRP-conjugated anti-mouse IgG antibody (NBP2-19382) was used to detect the primary antibody.



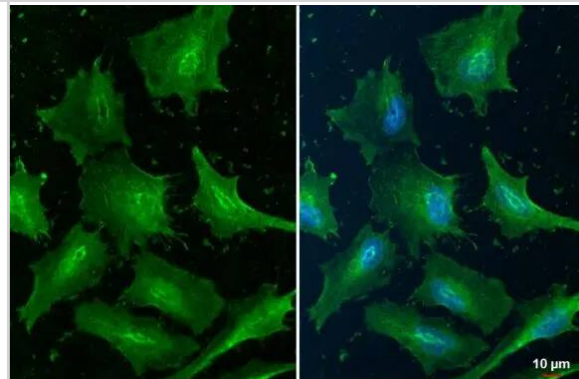
**Immunoprecipitation: Cofilin Antibody (GT217) [NBP3-13520]** - Immunoprecipitation of Cofilin protein from 293T whole cell extracts using 5 ug of Cofilin antibody [GT217] (NBP3-13520). Western blot analysis was performed using Cofilin antibody [GT217] (NBP3-13520) diluted at 1:500. EasyBlot anti-Mouse IgG was used as a secondary reagent.



Western Blot: Cofilin Antibody (GT217) [NBP3-13520] - Various whole cell extracts (30 ug) were separated by 15% SDS-PAGE, and the membrane was blotted with Cofilin antibody [GT217] (NBP3-13520) diluted at 1:20000. The HRP-conjugated anti-mouse IgG antibody was used to detect the primary antibody.



Immunocytochemistry/ Immunofluorescence: Cofilin Antibody (GT217) [NBP3-13520] - Cofilin antibody [GT217] detects Cofilin protein at cell membrane by immunofluorescent analysis. Sample: HeLa cells were fixed in 4% paraformaldehyde at RT for 15 min. Green: Cofilin stained by Cofilin antibody [GT217] (NBP3-13520) diluted at 1:500. Blue: Fluoroshield with DAPI .





### **Novus Biologicals USA**

10730 E. Briarwood Avenue  
Centennial, CO 80112  
USA  
Phone: 303.730.1950  
Toll Free: 1.888.506.6887  
Fax: 303.730.1966  
nb-customerservice@bio-techne.com

### **Bio-Techne Canada**

21 Canmotor Ave  
Toronto, ON M8Z 4E6  
Canada  
Phone: 905.827.6400  
Toll Free: 855.668.8722  
Fax: 905.827.6402  
canada.inquires@bio-techne.com

### **Bio-Techne Ltd**

19 Barton Lane  
Abingdon Science Park  
Abingdon, OX14 3NB, United Kingdom  
Phone: (44) (0) 1235 529449  
Free Phone: 0800 37 34 15  
Fax: (44) (0) 1235 533420  
info.EMEA@bio-techne.com

### **General Contact Information**

www.novusbio.com  
Technical Support: nb-technical@bio-techne.com  
Orders: nb-customerservice@bio-techne.com  
General: novus@novusbio.com

### **Products Related to NBP3-13520**

---

HAF007	Goat anti-Mouse IgG Secondary Antibody [HRP]
NB720-B	Rabbit anti-Mouse IgG (H+L) Secondary Antibody [Biotin]
NBP2-27231	Mouse IgG2b Isotype Control (MPC-11)
NBC1-18535	Recombinant Human Cofilin His Protein

---

### **Limitations**

This product is for research use only and is not approved for use in humans or in clinical diagnosis. Primary Antibodies are guaranteed for 1 year from date of receipt.

For more information on our 100% guarantee, please visit [www.novusbio.com/guarantee](http://www.novusbio.com/guarantee)

Earn gift cards/discounts by submitting a review: [www.novusbio.com/reviews/submit/NBP3-13520](http://www.novusbio.com/reviews/submit/NBP3-13520)

Earn gift cards/discounts by submitting a publication using this product:  
[www.novusbio.com/publications](http://www.novusbio.com/publications)

