

# Product Datasheet

## CXCL16 Antibody (GT516) - Azide and BSA Free NBP3-13519

Unit Size: 100 ul

Store at 4C short term. Aliquot and store at -20C long term. Avoid freeze-thaw cycles.

[www.novusbio.com](http://www.novusbio.com)



[technical@novusbio.com](mailto:technical@novusbio.com)

Protocols, Publications, Related Products, Reviews, Research Tools and Images at:  
[www.novusbio.com/NBP3-13519](http://www.novusbio.com/NBP3-13519)

Updated 3/3/2025 v.20.1

Earn rewards for product  
reviews and publications.

Submit a publication at [www.novusbio.com/publications](http://www.novusbio.com/publications)

Submit a review at [www.novusbio.com/reviews/destination/NBP3-13519](http://www.novusbio.com/reviews/destination/NBP3-13519)



**NBP3-13519**

CXCL16 Antibody (GT516) - Azide and BSA Free

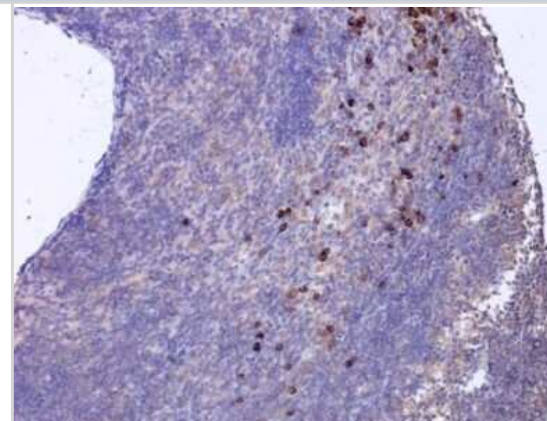
Product Information	
Unit Size	100 ul
Concentration	Concentrations vary lot to lot. See vial label for concentration. If unlisted please contact technical services.
Storage	Store at 4C short term. Aliquot and store at -20C long term. Avoid freeze-thaw cycles.
Clonality	Monoclonal
Clone	GT516
Preservative	No Preservative
Isotype	IgG2a
Purity	Protein A purified
Buffer	PBS

Product Description	
Description	Centrifuge briefly prior to opening.
Host	Mouse
Gene ID	58191
Gene Symbol	CXCL16
Species	Human, Mouse, Rat
Immunogen	Recombinant protein encompassing a sequence within the center region of human CXCL16. The exact sequence is proprietary.

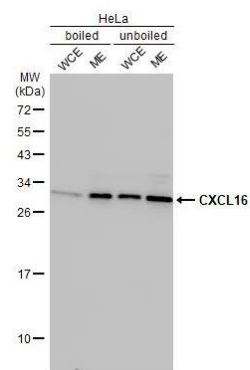
Product Application Details	
Applications	Western Blot, Immunohistochemistry-Paraffin, Immunohistochemistry
Recommended Dilutions	Western Blot, Immunohistochemistry, Immunohistochemistry-Paraffin

**Images**

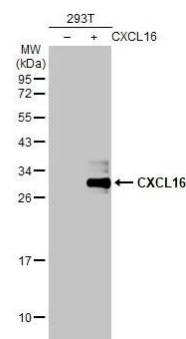
Immunohistochemistry-Paraffin: CXCL16 Antibody (GT516) [NBP3-13519] - CXCL16 antibody [GT516] detects CXCL16 protein at cytoplasm in rat lymph node by immunohistochemical analysis. Sample: Paraffin-embedded rat lymph node. CXCL16 antibody [GT516] (NBP3-13519) diluted at 1:200. Antigen Retrieval: Citrate buffer, pH 6.0, 15 min



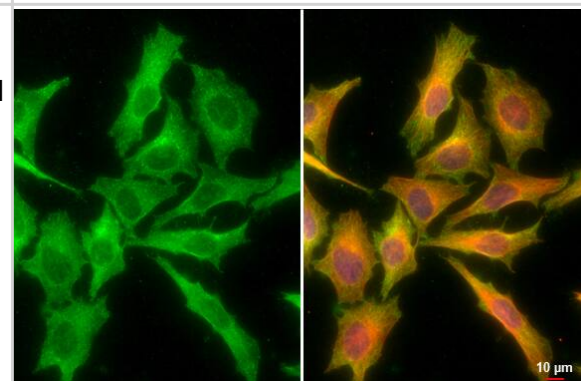
Western Blot: CXCL16 Antibody (GT516) [NBP3-13519] - HeLa whole cell extract and membrane extracts (30 ug) were separated by 12% SDS-PAGE, and the membrane was blotted with CXCL16 antibody [GT516] (NBP3-13519) diluted at 1:1000. The HRP-conjugated anti-mouse IgG antibody was used to detect the primary antibody. (WCE: whole cell extract; ME: membrane extract)



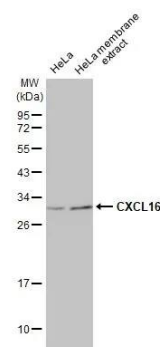
Western Blot: CXCL16 Antibody (GT516) [NBP3-13519] - Non-transfected (-) and transfected (+) 293T whole cell extracts (30 ug) were separated by 12% SDS-PAGE, and the membrane was blotted with CXCL16 antibody [GT516] (NBP3-13519) diluted at 1:1000. The HRP-conjugated anti-mouse IgG antibody was used to detect the primary antibody.



Immunocytochemistry/ Immunofluorescence: CXCL16 Antibody (GT516) [NBP3-13519] - CXCL16 antibody [GT516] detects CXCL16 protein at cytoplasm by immunofluorescent analysis. Sample: HeLa cells were fixed in 4% paraformaldehyde at RT for 15 min. Green: CXCL16 stained by CXCL16 antibody [GT516] (NBP3-13519) diluted at 1:500. Red: beta Tubulin, a cytoskeleton marker, stained by beta Tubulin antibody diluted at 1:1000. Blue: Fluoroshield with DAPI. Scale bar= 10um.



Western Blot: CXCL16 Antibody (GT516) [NBP3-13519] - HeLa whole cell and membrane extracts (30 ug) were separated by 12% SDS-PAGE, and the membrane was blotted with CXCL16 antibody [GT516] (NBP3-13519) diluted at 1:1000. The HRP-conjugated anti-mouse IgG antibody was used to detect the primary antibody.





### **Novus Biologicals USA**

10730 E. Briarwood Avenue  
Centennial, CO 80112  
USA  
Phone: 303.730.1950  
Toll Free: 1.888.506.6887  
Fax: 303.730.1966  
nb-customerservice@bio-techne.com

### **Bio-Techne Canada**

21 Canmotor Ave  
Toronto, ON M8Z 4E6  
Canada  
Phone: 905.827.6400  
Toll Free: 855.668.8722  
Fax: 905.827.6402  
canada.inquires@bio-techne.com

### **Bio-Techne Ltd**

19 Barton Lane  
Abingdon Science Park  
Abingdon, OX14 3NB, United Kingdom  
Phone: (44) (0) 1235 529449  
Free Phone: 0800 37 34 15  
Fax: (44) (0) 1235 533420  
info.EMEA@bio-techne.com

### **General Contact Information**

www.novusbio.com  
Technical Support: nb-technical@bio-techne.com  
Orders: nb-customerservice@bio-techne.com  
General: novus@novusbio.com

### **Products Related to NBP3-13519**

---

HAF007	Goat anti-Mouse IgG Secondary Antibody [HRP]
NB720-B	Rabbit anti-Mouse IgG (H+L) Secondary Antibody [Biotin]
NBP1-96778	Mouse IgG2a Isotype Control (M2A)
NBP2-35166-5ug	Recombinant Mouse CXCL16 Protein

---

### **Limitations**

This product is for research use only and is not approved for use in humans or in clinical diagnosis. Primary Antibodies are guaranteed for 1 year from date of receipt.

For more information on our 100% guarantee, please visit [www.novusbio.com/guarantee](http://www.novusbio.com/guarantee)

Earn gift cards/discounts by submitting a review: [www.novusbio.com/reviews/submit/NBP3-13519](http://www.novusbio.com/reviews/submit/NBP3-13519)

Earn gift cards/discounts by submitting a publication using this product:  
[www.novusbio.com/publications](http://www.novusbio.com/publications)

