

Product Datasheet

Pancreatic Lipase Antibody (GT1777) - Azide and BSA Free NBP3-13513

Unit Size: 100 ul

Store at 4C short term. Aliquot and store at -20C long term. Avoid freeze-thaw cycles.

www.novusbio.com



technical@novusbio.com

Protocols, Publications, Related Products, Reviews, Research Tools and Images at:
www.novusbio.com/NBP3-13513

Updated 3/3/2025 v.20.1

Earn rewards for product reviews and publications.

Submit a publication at www.novusbio.com/publications

Submit a review at www.novusbio.com/reviews/destination/NBP3-13513



NBP3-13513

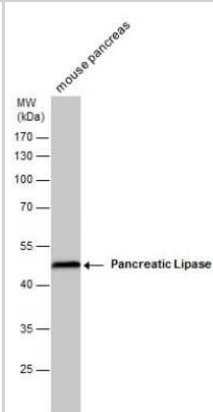
Pancreatic Lipase Antibody (GT1777) - Azide and BSA Free

Product Information	
Unit Size	100 ul
Concentration	Concentrations vary lot to lot. See vial label for concentration. If unlisted please contact technical services.
Storage	Store at 4C short term. Aliquot and store at -20C long term. Avoid freeze-thaw cycles.
Clonality	Monoclonal
Clone	GT1777
Preservative	No Preservative
Isotype	IgG1
Purity	Protein G purified
Buffer	PBS
Product Description	
Description	Centrifuge briefly prior to opening.
Host	Mouse
Gene ID	5406
Gene Symbol	PNLIP
Species	Mouse
Reactivity Notes	Rabbit (84%), Bovine (85%), Guinea pig (82%)
Immunogen	Recombinant protein encompassing a sequence within the center region of human Pancreatic Lipase. The exact sequence is proprietary.
Product Application Details	
Applications	Western Blot, Immunohistochemistry-Paraffin, Immunohistochemistry
Recommended Dilutions	Western Blot, Immunohistochemistry, Immunohistochemistry-Paraffin

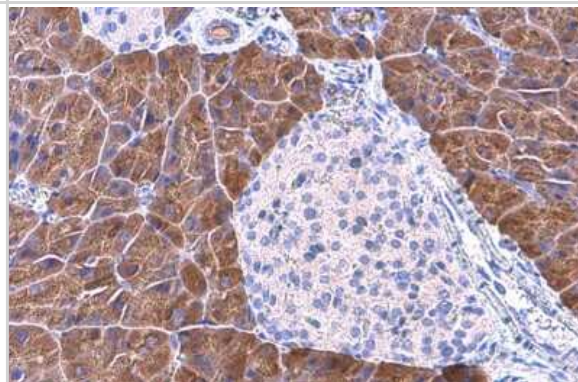


Images

Western Blot: Pancreatic Lipase Antibody (GT1777) [NBP3-13513] - Pancreatic Lipase antibody detects Pancreatic Lipase protein by western blot analysis. Mouse tissue extracts (50 ug) was separated by 10% SDS-PAGE, and the membrane was blotted with Pancreatic Lipase antibody (NBP3-13513) at a dilution of 1:500. The HRP-conjugated anti-mouse IgG antibody (NBP2-19382) was used to detect the primary antibody.



Immunohistochemistry-Paraffin: Pancreatic Lipase Antibody (GT1777) [NBP3-13513] - Pancreatic Lipase antibody [GT1777] detects Pancreatic Lipase protein at cytoplasm by immunohistochemical analysis. Sample: Paraffin-embedded mouse pancreas. Pancreatic Lipase stained by Pancreatic Lipase antibody [GT1777] (NBP3-13513) diluted at 1:200. Antigen Retrieval: Citrate buffer, pH 6.0, 15 min





Novus Biologicals USA

10730 E. Briarwood Avenue
Centennial, CO 80112
USA
Phone: 303.730.1950
Toll Free: 1.888.506.6887
Fax: 303.730.1966
nb-customerservice@bio-techne.com

Bio-Techne Canada

21 Canmotor Ave
Toronto, ON M8Z 4E6
Canada
Phone: 905.827.6400
Toll Free: 855.668.8722
Fax: 905.827.6402
canada.inquires@bio-techne.com

Bio-Techne Ltd

19 Barton Lane
Abingdon Science Park
Abingdon, OX14 3NB, United Kingdom
Phone: (44) (0) 1235 529449
Free Phone: 0800 37 34 15
Fax: (44) (0) 1235 533420
info.EMEA@bio-techne.com

General Contact Information

www.novusbio.com
Technical Support: nb-technical@bio-techne.com
Orders: nb-customerservice@bio-techne.com
General: novus@novusbio.com

Products Related to NBP3-13513

HAF007	Goat anti-Mouse IgG Secondary Antibody [HRP]
NB720-B	Rabbit anti-Mouse IgG (H+L) Secondary Antibody [Biotin]
NBP1-97005-0.5mg	Mouse IgG1 Isotype Control (MG1)
H00005406-P01-10ug	Recombinant Human Pancreatic Lipase GST (N-Term) Protein

Limitations

This product is for research use only and is not approved for use in humans or in clinical diagnosis. Primary Antibodies are guaranteed for 1 year from date of receipt.

For more information on our 100% guarantee, please visit www.novusbio.com/guarantee

Earn gift cards/discounts by submitting a review: www.novusbio.com/reviews/submit/NBP3-13513

Earn gift cards/discounts by submitting a publication using this product:
www.novusbio.com/publications

