

Product Datasheet

TOM1L1 Antibody (3F12) - Azide and BSA Free NBP3-13511

Unit Size: 100 ul

Store at 4C short term. Aliquot and store at -20C long term. Avoid freeze-thaw cycles.

www.novusbio.com



technical@novusbio.com

Protocols, Publications, Related Products, Reviews, Research Tools and Images at:
www.novusbio.com/NBP3-13511

Updated 3/3/2025 v.20.1

Earn rewards for product
reviews and publications.

Submit a publication at www.novusbio.com/publications

Submit a review at www.novusbio.com/reviews/destination/NBP3-13511



NBP3-13511

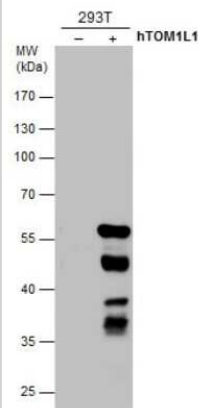
TOM1L1 Antibody (3F12) - Azide and BSA Free

Product Information	
Unit Size	100 ul
Concentration	Concentrations vary lot to lot. See vial label for concentration. If unlisted please contact technical services.
Storage	Store at 4C short term. Aliquot and store at -20C long term. Avoid freeze-thaw cycles.
Clonality	Monoclonal
Clone	3F12
Preservative	No Preservative
Isotype	IgG1
Purity	Antigen Affinity-purified
Buffer	PBS
Product Description	
Description	Centrifuge briefly prior to opening.
Host	Mouse
Gene ID	10040
Gene Symbol	TOM1L1
Species	Human
Immunogen	The immunogen used to generate this antibody corresponds to human TOM1L1.
Product Application Details	
Applications	Western Blot, Immunocytochemistry/ Immunofluorescence
Recommended Dilutions	Western Blot, Immunocytochemistry/ Immunofluorescence

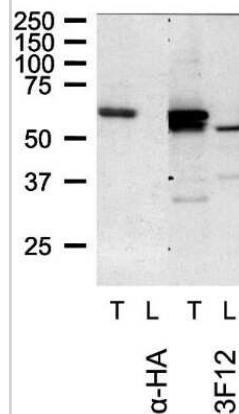


Images

Western Blot: TOM1L1 Antibody (3F12) [NBP3-13511] - TOM1L1 antibody detects TOM1L1 protein by western blot analysis. Non-transfected (-) and TOM1L1-transfected (+) 293T whole cell extracts (30 ug) were separated by 10% SDS-PAGE, and the membrane was blotted with TOM1L1 antibody (NBP3-13511) diluted at 1:1000.



Western Blot: TOM1L1 Antibody (3F12) [NBP3-13511] - WB analysis of HeLa lysate transfected with TOM1L1 using NBP3-13511 TOM1L1 antibody [3F12]. T : Transfected HeLa with HA-TOM1L1 fL L : HeLa lysate

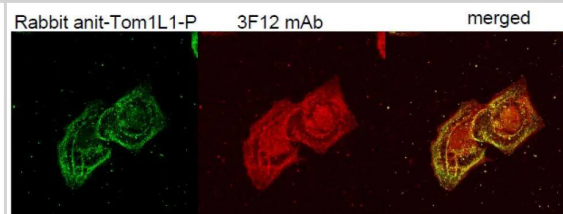


ICC/IF analysis of EGF stimulated A431 cells using NBP3-13511 TOM1L1 antibody [3F12].

Red : Primary antibody

Green : Polyclonal TOM1L1 antibody

Yellow : Merged color of red and green





Novus Biologicals USA

10730 E. Briarwood Avenue
Centennial, CO 80112
USA
Phone: 303.730.1950
Toll Free: 1.888.506.6887
Fax: 303.730.1966
nb-customerservice@bio-techne.com

Bio-Techne Canada

21 Canmotor Ave
Toronto, ON M8Z 4E6
Canada
Phone: 905.827.6400
Toll Free: 855.668.8722
Fax: 905.827.6402
canada.inquires@bio-techne.com

Bio-Techne Ltd

19 Barton Lane
Abingdon Science Park
Abingdon, OX14 3NB, United Kingdom
Phone: (44) (0) 1235 529449
Free Phone: 0800 37 34 15
Fax: (44) (0) 1235 533420
info.EMEA@bio-techne.com

General Contact Information

www.novusbio.com
Technical Support: nb-technical@bio-techne.com
Orders: nb-customerservice@bio-techne.com
General: novus@novusbio.com

Products Related to NBP3-13511

HAF007	Goat anti-Mouse IgG Secondary Antibody [HRP]
NB720-B	Rabbit anti-Mouse IgG (H+L) Secondary Antibody [Biotin]
NBP1-97005-0.5mg	Mouse IgG1 Isotype Control (MG1)
H00010040-P01-10ug	Recombinant Human TOM1L1 GST (N-Term) Protein

Limitations

This product is for research use only and is not approved for use in humans or in clinical diagnosis. Primary Antibodies are guaranteed for 1 year from date of receipt.

For more information on our 100% guarantee, please visit www.novusbio.com/guarantee

Earn gift cards/discounts by submitting a review: www.novusbio.com/reviews/submit/NBP3-13511

Earn gift cards/discounts by submitting a publication using this product:
www.novusbio.com/publications

