

Product Datasheet

TOMM20 Antibody - BSA Free NBP3-13287

Unit Size: 100 ul

Store at 4C short term. Aliquot and store at -20C long term. Avoid freeze-thaw cycles.

www.novusbio.com



technical@novusbio.com

Protocols, Publications, Related Products, Reviews, Research Tools and Images at:
www.novusbio.com/NBP3-13287

Updated 3/3/2025 v.20.1

Earn rewards for product
reviews and publications.

Submit a publication at www.novusbio.com/publications

Submit a review at www.novusbio.com/reviews/destination/NBP3-13287



NBP3-13287

TOMM20 Antibody - BSA Free

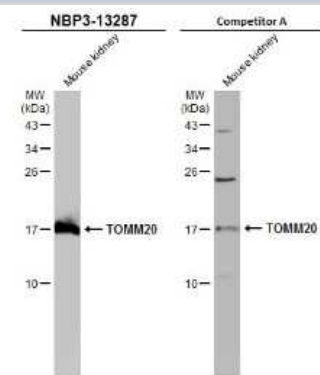
Product Information	
Unit Size	100 ul
Concentration	Concentrations vary lot to lot. See vial label for concentration. If unlisted please contact technical services.
Storage	Store at 4C short term. Aliquot and store at -20C long term. Avoid freeze-thaw cycles.
Clonality	Polyclonal
Preservative	0.025% Proclin 300
Isotype	IgG
Purity	Antigen Affinity-purified
Buffer	PBS (pH 7), 20% Glycerol

Product Description	
Description	Centrifuge briefly prior to opening.
Host	Rabbit
Gene ID	9804
Gene Symbol	TOMM20
Species	Human, Mouse, Rat
Immunogen	Full length Human TOMM20 recombinant protein.

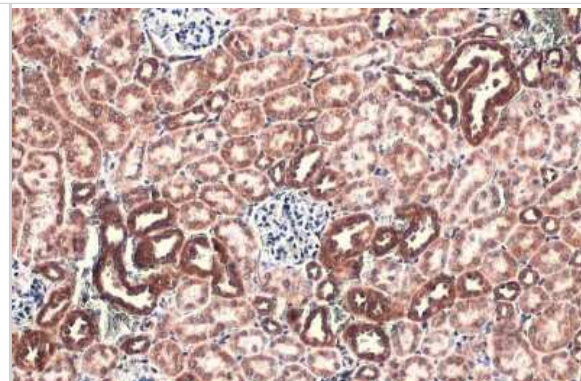
Product Application Details	
Applications	Western Blot, Immunohistochemistry-Paraffin, Immunocytochemistry/Immunofluorescence, Immunohistochemistry
Recommended Dilutions	Western Blot, Immunohistochemistry, Immunocytochemistry/Immunofluorescence, Immunohistochemistry-Paraffin

Images

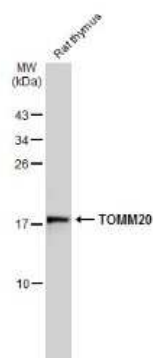
Western Blot: TOMM20 Antibody [NBP3-13287] - Mouse tissue extract (50 ug) was separated by 15% SDS-PAGE, and the membranes were blotted with TOMM20 antibody (NBP3-13287) diluted at 1:1000 and competitor's antibody (Competitor A) diluted at 1:500. The HRP-conjugated anti-rabbit IgG antibody (NBP2-19301) was used to detect the primary antibody.



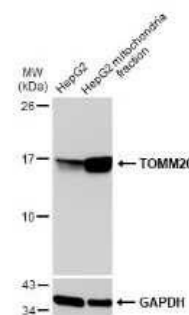
Immunohistochemistry-Paraffin: TOMM20 Antibody [NBP3-13287] - TOMM20 antibody detects TOMM20 protein at mitochondria by immunohistochemical analysis. Sample: Paraffin-embedded mouse kidney. TOMM20 stained by TOMM20 antibody (NBP3-13287) diluted at 1:500. Antigen Retrieval: Citrate buffer, pH 6.0, 15 min



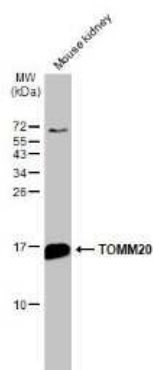
Western Blot: TOMM20 Antibody [NBP3-13287] - Rat tissue extract (50 ug) was separated by 15% SDS-PAGE, and the membrane was blotted with TOMM20 antibody (NBP3-13287) diluted at 1:1000. The HRP-conjugated anti-rabbit IgG antibody (NBP2-19301) was used to detect the primary antibody.



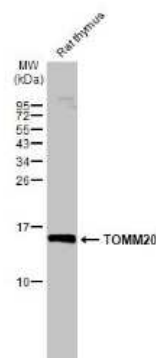
Western Blot: TOMM20 Antibody [NBP3-13287] - HepG2 and mitochondria extracts (30 ug) were separated by SDS-PAGE, and the membrane was blotted with TOMM20 antibody (NBP3-13287) diluted at 1:1000. The HRP-conjugated anti-rabbit IgG antibody (NBP2-19301) was used to detect the primary antibody.



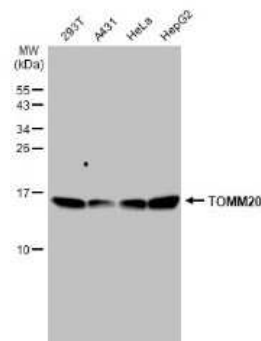
Western Blot: TOMM20 Antibody [NBP3-13287] - Mouse tissue extract (50 ug) was separated by 15% SDS-PAGE, and the membrane was blotted with TOMM20 antibody (NBP3-13287) diluted at 1:1000. The HRP-conjugated anti-rabbit IgG antibody (NBP2-19301) was used to detect the primary antibody.



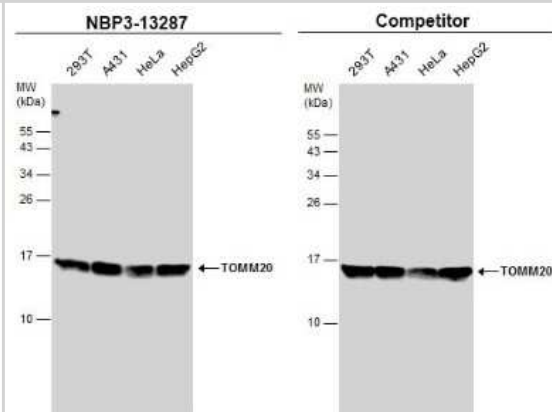
Western Blot: TOMM20 Antibody [NBP3-13287] - Rat tissue extract (50 ug) was separated by 15% SDS-PAGE, and the membrane was blotted with TOMM20 antibody (NBP3-13287) diluted at 1:1000. The HRP-conjugated anti-rabbit IgG antibody (NBP2-19301) was used to detect the primary antibody.



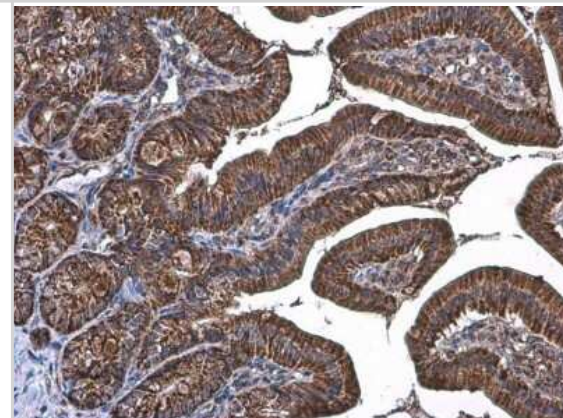
Western Blot: TOMM20 Antibody [NBP3-13287] - Various whole cell extracts (30 ug) were separated by 15% SDS-PAGE, and the membrane was blotted with TOMM20 antibody (NBP3-13287) diluted at 1:1000. The HRP-conjugated anti-rabbit IgG antibody (NBP2-19301) was used to detect the primary antibody.



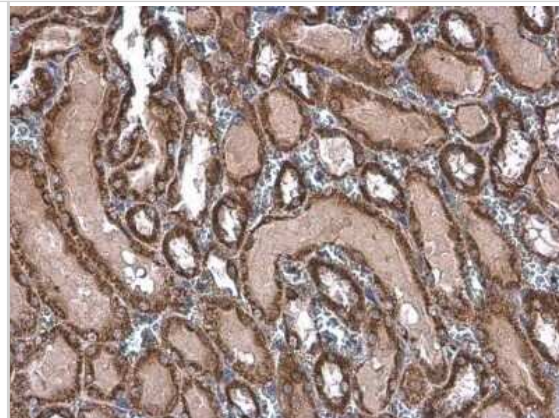
Western Blot: TOMM20 Antibody [NBP3-13287] - Various whole cell extracts (30 ug) were separated by 15% SDS-PAGE, and the membranes were blotted with TOMM20 antibody (NBP3-13287) diluted at 1:1000 and competitor's antibody diluted at 1:1000. The HRP-conjugated anti-rabbit IgG antibody (NBP2-19301) was used to detect the primary antibody.



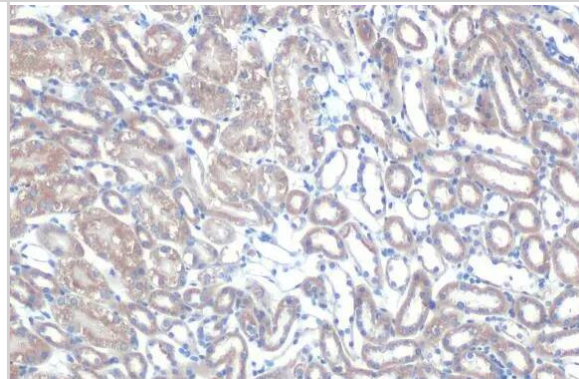
Immunohistochemistry-Paraffin: TOMM20 Antibody [NBP3-13287] - TOMM20 antibody detects TOMM20 protein at mitochondria by immunohistochemical analysis. Sample: Paraffin-embedded mouse duodenum. TOMM20 stained by TOMM20 antibody (NBP3-13287) diluted at 1:500. Antigen Retrieval: Citrate buffer, pH 6.0, 15 min



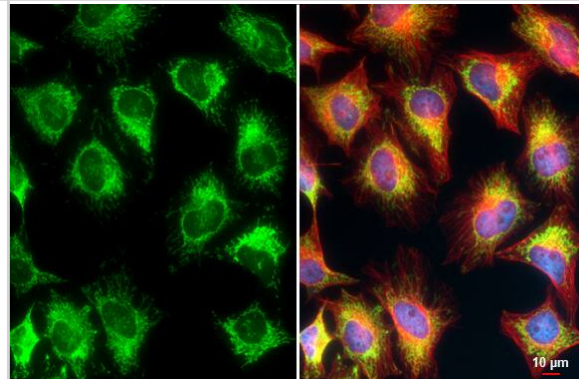
Immunohistochemistry-Paraffin: TOMM20 Antibody [NBP3-13287] - TOMM20 antibody detects TOMM20 protein at mitochondria by immunohistochemical analysis. Sample: Paraffin-embedded rat kidney. TOMM20 stained by TOMM20 antibody (NBP3-13287) diluted at 1:500. Antigen Retrieval: Citrate buffer, pH 6.0, 15 min



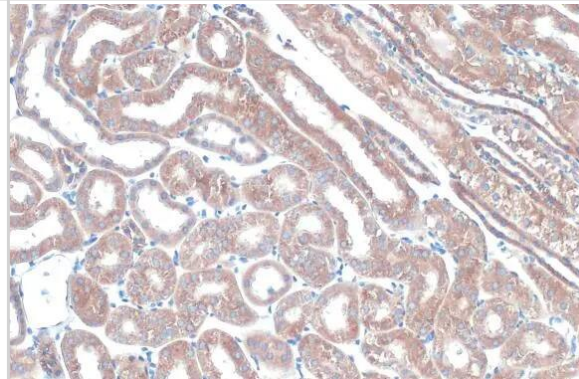
Immunohistochemistry-Paraffin: TOMM20 Antibody [NBP3-13287] - TOMM20 antibody detects TOMM20 protein at cytoplasm by immunohistochemical analysis. Sample: Paraffin-embedded mouse kidney. TOMM20 stained by TOMM20 antibody (NBP3-13287) diluted at 1:500. Antigen Retrieval: Citrate buffer, pH 6.0, 15 min



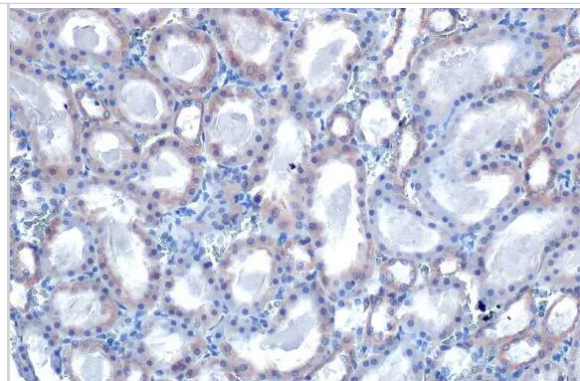
Immunocytochemistry/ Immunofluorescence: TOMM20 Antibody [NBP3-13287] - TOMM20 antibody detects TOMM20 protein at mitochondria by immunofluorescent analysis. Sample: HeLa cells were fixed in 4% paraformaldehyde at RT for 15 min. Green: TOMM20 stained by TOMM20 antibody (NBP3-13287) diluted at 1:500. Red: alpha Tubulin, a cytoskeleton marker, stained by alpha Tubulin antibody [GT114] diluted at 1:1000. Blue: Fluoroshield with DAPI. Scale bar= 10um.



Immunohistochemistry-Paraffin: TOMM20 Antibody [NBP3-13287] - TOMM20 antibody detects TOMM20 protein at mitochondria by immunohistochemical analysis. Sample: Paraffin-embedded mouse kidney. TOMM20 stained by TOMM20 antibody (NBP3-13287) diluted at 1:615. Antigen Retrieval: Citrate buffer, pH 6.0, 15 min



Immunohistochemistry-Paraffin: TOMM20 Antibody [NBP3-13287] - TOMM20 antibody detects TOMM20 protein at cytoplasm by immunohistochemical analysis. Sample: Paraffin-embedded rat kidney. TOMM20 stained by TOMM20 antibody (NBP3-13287) diluted at 1:500. Antigen Retrieval: Citrate buffer, pH 6.0, 15 min





Novus Biologicals USA

10730 E. Briarwood Avenue
Centennial, CO 80112
USA
Phone: 303.730.1950
Toll Free: 1.888.506.6887
Fax: 303.730.1966
nb-customerservice@bio-techne.com

Bio-Techne Canada

21 Canmotor Ave
Toronto, ON M8Z 4E6
Canada
Phone: 905.827.6400
Toll Free: 855.668.8722
Fax: 905.827.6402
canada.inquires@bio-techne.com

Bio-Techne Ltd

19 Barton Lane
Abingdon Science Park
Abingdon, OX14 3NB, United Kingdom
Phone: (44) (0) 1235 529449
Free Phone: 0800 37 34 15
Fax: (44) (0) 1235 533420
info.EMEA@bio-techne.com

General Contact Information

www.novusbio.com
Technical Support: nb-technical@bio-techne.com
Orders: nb-customerservice@bio-techne.com
General: novus@novusbio.com

Products Related to NBP3-13287

HAF008	Goat anti-Rabbit IgG Secondary Antibody [HRP]
NB7160	Goat anti-Rabbit IgG (H+L) Secondary Antibody [HRP]
NBP2-24891	Rabbit IgG Isotype Control
NBP2-22883	Recombinant Human TOMM20 His Protein

Limitations

This product is for research use only and is not approved for use in humans or in clinical diagnosis. Primary Antibodies are guaranteed for 1 year from date of receipt.

For more information on our 100% guarantee, please visit www.novusbio.com/guarantee

Earn gift cards/discounts by submitting a review: www.novusbio.com/reviews/submit/NBP3-13287

Earn gift cards/discounts by submitting a publication using this product:
www.novusbio.com/publications

