

Product Datasheet

BRM Antibody NBP3-13283

Unit Size: 100 ul

Store at 4C short term. Aliquot and store at -20C long term. Avoid freeze-thaw cycles.

www.novusbio.com



technical@novusbio.com

Protocols, Publications, Related Products, Reviews, Research Tools and Images at:
www.novusbio.com/NBP3-13283

Updated 5/1/2024 v.20.1

Earn rewards for product
reviews and publications.

Submit a publication at www.novusbio.com/publications

Submit a review at www.novusbio.com/reviews/destination/NBP3-13283



NBP3-13283

BRM Antibody

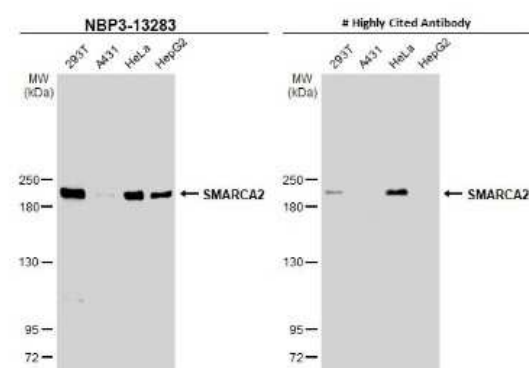
Product Information	
Unit Size	100 ul
Concentration	Concentrations vary lot to lot. See vial label for concentration. If unlisted please contact technical services.
Storage	Store at 4C short term. Aliquot and store at -20C long term. Avoid freeze-thaw cycles.
Clonality	Polyclonal
Preservative	0.025% Proclin 300
Isotype	IgG
Purity	Antigen Affinity-purified
Buffer	PBS (pH 7), 20% Glycerol

Product Description	
Description	Centrifuge briefly prior to opening.
Host	Rabbit
Gene ID	6595
Gene Symbol	SMARCA2
Species	Human, Mouse, Rat
Immunogen	Carrier-protein conjugated synthetic peptide encompassing a sequence within the N-terminus region of human BRM. The exact sequence is proprietary.

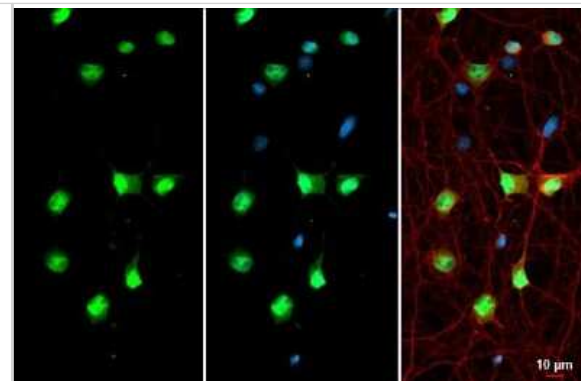
Product Application Details	
Applications	Western Blot, Immunocytochemistry/ Immunofluorescence, Immunohistochemistry, Immunohistochemistry-Paraffin
Recommended Dilutions	Western Blot, Immunohistochemistry, Immunocytochemistry/ Immunofluorescence, Immunohistochemistry-Paraffin

Images

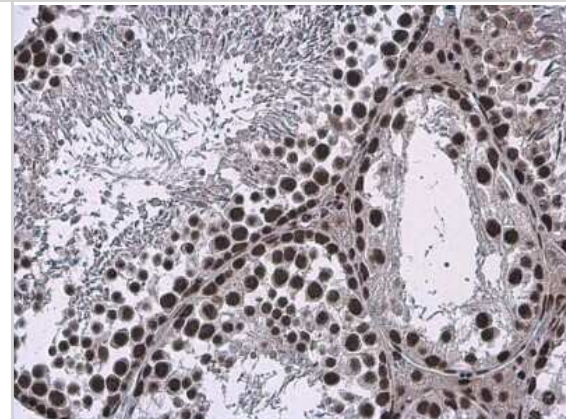
Western Blot: BRM Antibody [NBP3-13283] - Various whole cell extracts (30 ug) were separated by 5% SDS-PAGE, and the membranes were blotted with BRM antibody (NBP3-13283) diluted at 1:1000 and competitor's antibody diluted at 1:1000. The HRP-conjugated anti-rabbit IgG antibody (NBP2-19301) was used to detect the primary antibody.



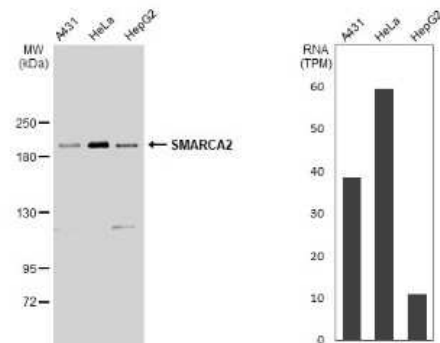
Immunocytochemistry/Immunofluorescence: BRM Antibody [NBP3-13283] - BRM antibody detects BRM protein at nucleolus by immunofluorescent analysis. Sample: DIV10 rat hippocampal neuron cells were fixed in 4% paraformaldehyde at RT for 15 min. Green: BRM stained by BRM antibody (NBP3-13283) diluted at 1:500. Red: Tau, a marker, stained by Tau antibody [GT287] diluted at 1:500.



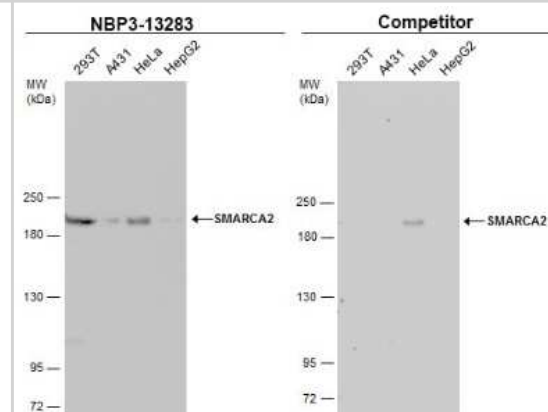
Immunohistochemistry-Paraffin: BRM Antibody [NBP3-13283] - BRM antibody detects BRM protein at nucleus in mouse testis by immunohistochemical analysis. Sample: Paraffin-embedded mouse testis. BRM antibody (NBP3-13283) diluted at 1:500. Antigen Retrieval: Citrate buffer, pH 6.0, 15 min



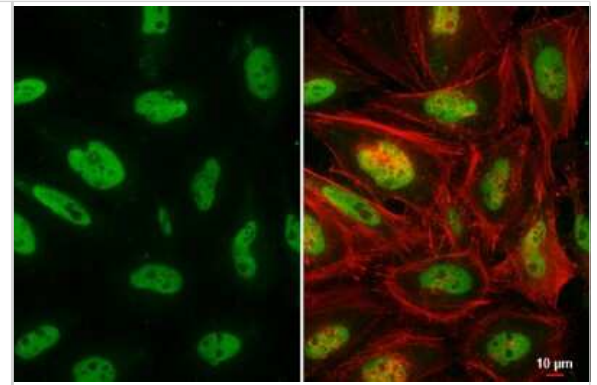
Western Blot: BRM Antibody [NBP3-13283] - Various whole cell extracts (30 ug) were separated by 5% SDS-PAGE, and the membrane was blotted with BRM antibody (NBP3-13283) diluted at 1:1000. The HRP-conjugated anti-rabbit IgG antibody (NBP2-19301) was used to detect the primary antibody. Corresponding RNA expression data for the same cell lines are based on Human Protein Atlas program.



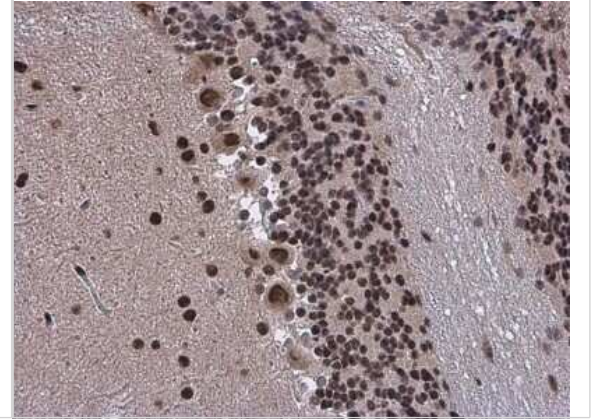
Western Blot: BRM Antibody [NBP3-13283] - Various whole cell extracts (30 ug) were separated by 5% SDS-PAGE, and the membranes were blotted with BRM antibody (NBP3-13283) diluted at 1:1000 and competitor's antibody diluted at 1:100. The HRP-conjugated anti-rabbit IgG antibody (NBP2-19301) was used to detect the primary antibody.



Immunocytochemistry/Immunofluorescence: BRM Antibody [NBP3-13283] - BRM antibody detects BRM protein at nucleus by immunofluorescent analysis. Sample: HeLa cells were fixed in 4% paraformaldehyde at RT for 15 min. Green: BRM stained by BRM antibody (NBP3-13283) diluted at 1:500. Red: phalloidin, a cytoskeleton marker, diluted at 1:200. Scale bar= 10 um.



Immunohistochemistry-Paraffin: BRM Antibody [NBP3-13283] - BRM antibody detects BRM protein at nucleus in mouse brain by immunohistochemical analysis. Sample: Paraffin-embedded mouse brain. BRM antibody (NBP3-13283) diluted at 1:500. Antigen Retrieval: Citrate buffer, pH 6.0, 15 min





Novus Biologicals USA

10730 E. Briarwood Avenue
Centennial, CO 80112
USA
Phone: 303.730.1950
Toll Free: 1.888.506.6887
Fax: 303.730.1966
nb-customerservice@bio-techne.com

Bio-Techne Canada

21 Canmotor Ave
Toronto, ON M8Z 4E6
Canada
Phone: 905.827.6400
Toll Free: 855.668.8722
Fax: 905.827.6402
canada.inquires@bio-techne.com

Bio-Techne Ltd

19 Barton Lane
Abingdon Science Park
Abingdon, OX14 3NB, United Kingdom
Phone: (44) (0) 1235 529449
Free Phone: 0800 37 34 15
Fax: (44) (0) 1235 533420
info.EMEA@bio-techne.com

General Contact Information

www.novusbio.com
Technical Support: nb-technical@bio-techne.com
Orders: nb-customerservice@bio-techne.com
General: novus@novusbio.com

Products Related to NBP3-13283

HAF008	Goat anti-Rabbit IgG Secondary Antibody [HRP]
NB7160	Goat anti-Rabbit IgG (H+L) Secondary Antibody [HRP]
NBP2-24891	Rabbit IgG Isotype Control
H00006595-Q01-10ug	Recombinant Human BRM GST (N-Term) Protein

Limitations

This product is for research use only and is not approved for use in humans or in clinical diagnosis. Primary Antibodies are guaranteed for 1 year from date of receipt.

For more information on our 100% guarantee, please visit www.novusbio.com/guarantee

Earn gift cards/discounts by submitting a review: www.novusbio.com/reviews/submit/NBP3-13283

Earn gift cards/discounts by submitting a publication using this product:
www.novusbio.com/publications

