

Product Datasheet

pan-Synuclein Antibody NBP3-13218

Unit Size: 100 ul

Store at 4C short term. Aliquot and store at -20C long term. Avoid freeze-thaw cycles.

www.novusbio.com



technical@novusbio.com

Protocols, Publications, Related Products, Reviews, Research Tools and Images at:
www.novusbio.com/NBP3-13218

Updated 9/25/2025 v.20.1

Earn rewards for product
reviews and publications.

Submit a publication at www.novusbio.com/publications

Submit a review at www.novusbio.com/reviews/destination/NBP3-13218



NBP3-13218

pan-Synuclein Antibody

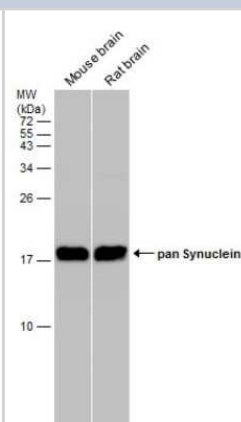
| Product Information | |
|---------------------|--|
| Unit Size | 100 ul |
| Concentration | Concentrations vary lot to lot. See vial label for concentration. If unlisted please contact technical services. |
| Storage | Store at 4C short term. Aliquot and store at -20C long term. Avoid freeze-thaw cycles. |
| Clonality | Polyclonal |
| Preservative | 0.025% Proclin 300 |
| Isotype | IgG |
| Purity | Antigen Affinity-purified |
| Buffer | PBS, 1% BSA, 20% Glycerol |

| Product Description | |
|---------------------|---|
| Description | Centrifuge briefly prior to opening. |
| Host | Rabbit |
| Gene ID | 6622 |
| Gene Symbol | SNCA |
| Species | Mouse, Rat |
| Reactivity Notes | Xenopus laevis (82%), Chicken (84%) |
| Immunogen | Recombinant protein encompassing a sequence within the center region of Rat pan-Synuclein. The exact sequence is proprietary. |

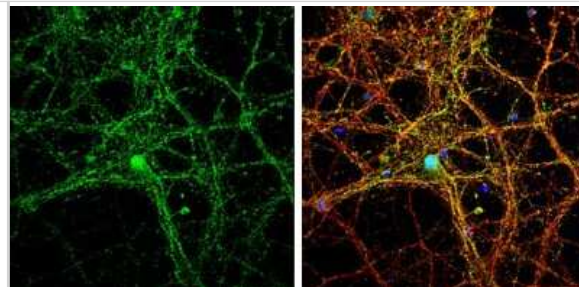
| Product Application Details | |
|-----------------------------|--|
| Applications | Western Blot, Immunohistochemistry-Paraffin, Immunocytochemistry/Immunofluorescence, Immunohistochemistry, Immunohistochemistry-Frozen |
| Recommended Dilutions | Western Blot, Immunohistochemistry, Immunocytochemistry/Immunofluorescence, Immunohistochemistry-Paraffin, Immunohistochemistry-Frozen |

Images

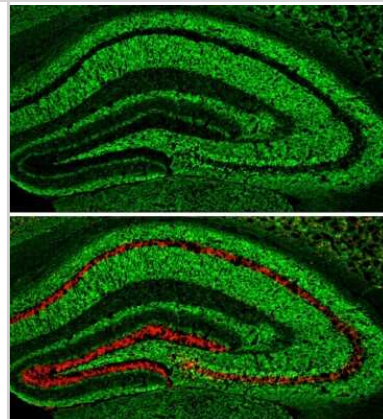
Western Blot: pan-Synuclein Antibody [NBP3-13218] - Various tissue extracts (50 ug) were separated by 15% SDS-PAGE, and the membrane was blotted with pan-Synuclein antibody (NBP3-13218) diluted at 1:1000.



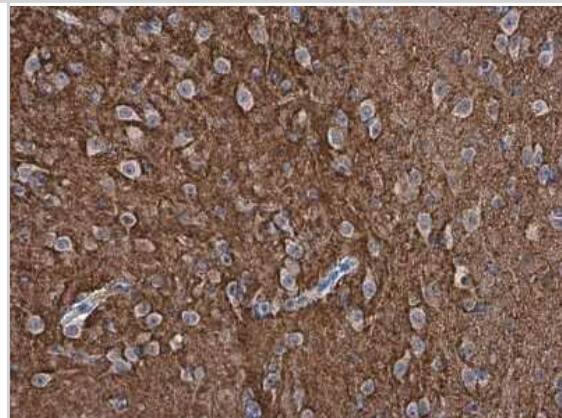
Immunocytochemistry/Immunofluorescence: pan-Synuclein Antibody [NBP3-13218] - pan-Synuclein antibody detects pan-Synuclein protein by immunofluorescent analysis. Sample: DIV14 rat E18 primary cortical neurons were fixed in 4% paraformaldehyde at RT for 15 min. Green: pan-Synuclein protein stained by pan-Synuclein antibody (NBP3-13218) diluted at 1:500. Red: beta Tubulin 3/ Tuj1, stained by beta Tubulin 3/ Tuj1 antibody [GT1338] (NBP3-13505) diluted at 1:500. Blue: Fluoroshield with DAPI.



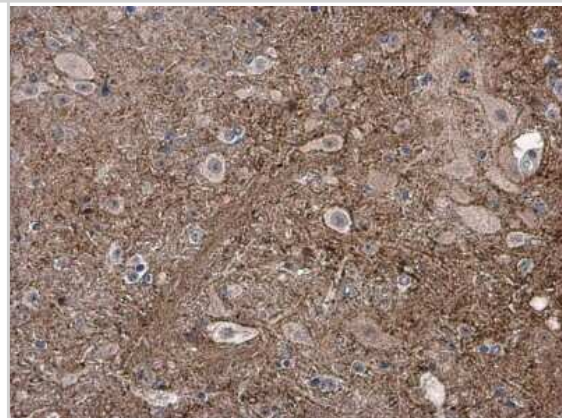
Immunohistochemistry-Frozen: pan-Synuclein Antibody [NBP3-13218] - pan-Synuclein antibody detects pan-Synuclein protein expression by immunohistochemical analysis. Sample: Frozen-sectioned adult mouse hippocampus. Green: pan-Synuclein protein stained by pan-Synuclein antibody (NBP3-13218) diluted at 1:250. Red: NeuN, stained by NeuN antibody [2Q158] diluted at 1:500.



Immunohistochemistry-Paraffin: pan-Synuclein Antibody [NBP3-13218] - pan-Synuclein antibody detects pan-Synuclein protein at cell membrane in mouse brain by immunohistochemical analysis. Sample: Paraffin-embedded mouse brain. pan-Synuclein antibody (NBP3-13218) diluted at 1:500. Antigen Retrieval: Citrate buffer, pH 6.0, 15 min



Immunohistochemistry-Paraffin: pan-Synuclein Antibody [NBP3-13218] - pan-Synuclein antibody detects pan-Synuclein protein at cell membrane in rat brain by immunohistochemical analysis. Sample: Paraffin-embedded rat brain. pan-Synuclein antibody (NBP3-13218) diluted at 1:500. Antigen Retrieval: Citrate buffer, pH 6.0, 15 min



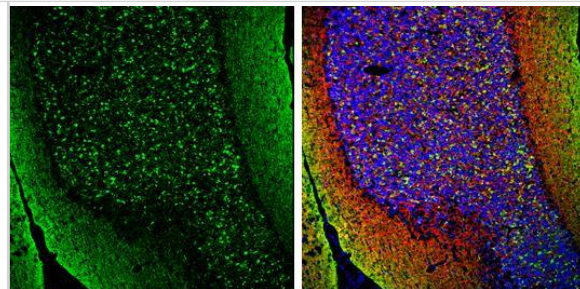
alpha Synuclein antibody detects alpha Synuclein protein expression by immunohistochemical analysis.

Sample: Frozen-sectioned adult mouse cerebellum.

Green: alpha Synuclein protein stained by alpha Synuclein antibody (NBP3-13218) diluted at 1:250.

Red: beta Tubulin 3/ TUJ1, stained by beta Tubulin 3/ TUJ1 antibody [GT11710] diluted at 1:500.

Blue: Fluoroshield with DAPI .





Novus Biologicals USA

10730 E. Briarwood Avenue
Centennial, CO 80112
USA
Phone: 303.730.1950
Toll Free: 1.888.506.6887
Fax: 303.730.1966
nb-customerservice@bio-techne.com

Bio-Techne Canada

21 Canmotor Ave
Toronto, ON M8Z 4E6
Canada
Phone: 905.827.6400
Toll Free: 855.668.8722
Fax: 905.827.6402
canada.inquires@bio-techne.com

Bio-Techne Ltd

19 Barton Lane
Abingdon Science Park
Abingdon, OX14 3NB, United Kingdom
Phone: (44) (0) 1235 529449
Free Phone: 0800 37 34 15
Fax: (44) (0) 1235 533420
info.EMEA@bio-techne.com

General Contact Information

www.novusbio.com
Technical Support: nb-technical@bio-techne.com
Orders: nb-customerservice@bio-techne.com
General: novus@novusbio.com

Products Related to NBP3-13218

| | |
|------------------|---|
| HAF008 | Goat anti-Rabbit IgG Secondary Antibody [HRP] |
| NB7160 | Goat anti-Rabbit IgG (H+L) Secondary Antibody [HRP] |
| NBP2-24891 | Rabbit IgG Isotype Control |
| NBP1-72278-100ug | Recombinant Mouse pan-Synuclein Protein |

Limitations

This product is for research use only and is not approved for use in humans or in clinical diagnosis. Primary Antibodies are guaranteed for 1 year from date of receipt.

For more information on our 100% guarantee, please visit www.novusbio.com/guarantee

Earn gift cards/discounts by submitting a review: www.novusbio.com/reviews/submit/NBP3-13218

Earn gift cards/discounts by submitting a publication using this product:
www.novusbio.com/publications

