

# Product Datasheet

## KCC2/SLC12A5 Antibody - BSA Free NBP3-13161

Unit Size: 100 ul

Store at 4C short term. Aliquot and store at -20C long term. Avoid freeze-thaw cycles.

[www.novusbio.com](http://www.novusbio.com)



[technical@novusbio.com](mailto:technical@novusbio.com)

Protocols, Publications, Related Products, Reviews, Research Tools and Images at:  
[www.novusbio.com/NBP3-13161](http://www.novusbio.com/NBP3-13161)

Updated 3/3/2025 v.20.1

Earn rewards for product  
reviews and publications.

Submit a publication at [www.novusbio.com/publications](http://www.novusbio.com/publications)

Submit a review at [www.novusbio.com/reviews/destination/NBP3-13161](http://www.novusbio.com/reviews/destination/NBP3-13161)



**NBP3-13161**

KCC2/SLC12A5 Antibody - BSA Free

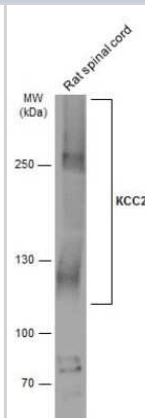
Product Information	
Unit Size	100 ul
Concentration	Concentrations vary lot to lot. See vial label for concentration. If unlisted please contact technical services.
Storage	Store at 4C short term. Aliquot and store at -20C long term. Avoid freeze-thaw cycles.
Clonality	Polyclonal
Preservative	0.025% Proclin 300
Isotype	IgG
Purity	Antigen Affinity-purified
Buffer	PBS (pH 7), 20% Glycerol
Target Molecular Weight	126 kDa

Product Description	
Description	Centrifuge briefly prior to opening.
Host	Rabbit
Gene ID	57468
Gene Symbol	SLC12A5
Species	Human, Mouse, Rat
Immunogen	Carrier-protein conjugated synthetic peptide encompassing a sequence within the C-terminus region of mouse KCC2/SLC12A5. The exact sequence is proprietary.

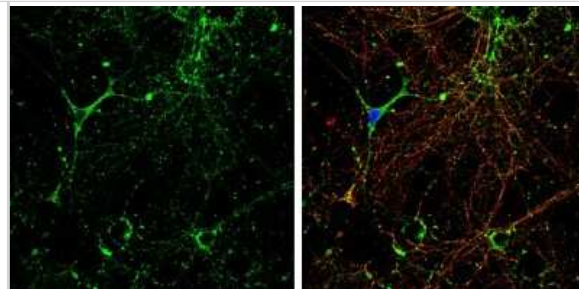
Product Application Details	
Applications	Western Blot, Immunohistochemistry-Paraffin, Immunocytochemistry/ Immunofluorescence, Immunohistochemistry
Recommended Dilutions	Western Blot 1:500-1:10000, Immunohistochemistry 1:100-1:1000, Immunocytochemistry/ Immunofluorescence 1:100-1:1000, Immunohistochemistry-Paraffin 1:100-1:1000

**Images**

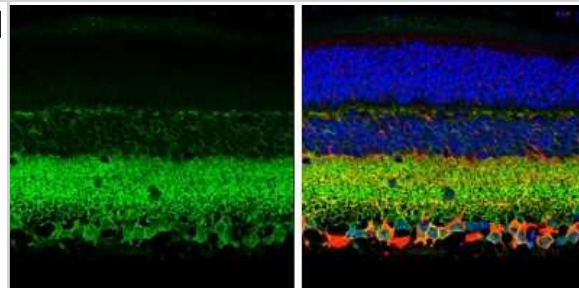
Western Blot: KCC2/SLC12A5 Antibody [NBP3-13161] - Rat tissue extract (50 ug) was separated by 5% SDS-PAGE, and the membrane was blotted with KCC2/SLC12A5 antibody (NBP3-13161) diluted at 1:5000. The HRP-conjugated anti-rabbit IgG antibody (NBP2-19301) was used to detect the primary antibody.



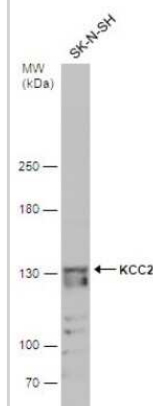
**Immunocytochemistry/Immunofluorescence: KCC2/SLC12A5 Antibody [NBP3-13161]** - KCC2/SLC12A5 antibody detects KCC2/SLC12A5 protein by immunofluorescent analysis. Sample: DIV10 rat E18 primary hippocampal neurons were fixed in 4% paraformaldehyde at RT for 15 min. Green: KCC2/SLC12A5 protein stained by KCC2/SLC12A5 antibody (NBP3-13161) diluted at 1:500. Red: beta Tubulin 3/ Tuj1, stained by beta Tubulin 3/ Tuj1 antibody [GT1338] (NBP3-13505) diluted at 1:500. Blue: Fluoroshield with DAPI.



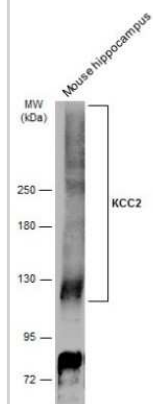
**Immunohistochemistry-Paraffin: KCC2/SLC12A5 Antibody [NBP3-13161]** - KCC2/SLC12A5 antibody detects KCC2/SLC12A5 protein expression by immunohistochemical analysis. Sample: Paraffin-Embedded adult mouse retina. Green: KCC2/SLC12A5 protein stained by KCC2/SLC12A5 antibody (NBP3-13161) diluted at 1:250. Red: beta Tubulin 3/ TUJ1, stained by beta Tubulin 3/ TUJ1 antibody [GT11710] (NBP2-43559) diluted at 1:500. Blue: Fluoroshield with DAPI.



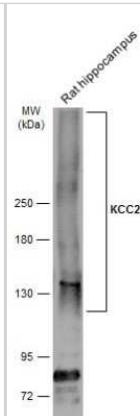
**Western Blot: KCC2/SLC12A5 Antibody [NBP3-13161]** - Whole cell extract (30 ug) was separated by 5% SDS-PAGE, and the membrane was blotted with KCC2/SLC12A5 antibody (NBP3-13161) diluted at 1:500.



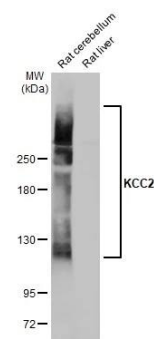
**Western Blot: KCC2/SLC12A5 Antibody [NBP3-13161]** - Mouse tissue extract (50 ug) was separated by 5% SDS-PAGE, and the membrane was blotted with KCC2/SLC12A5 antibody (NBP3-13161) diluted at 1:5000. The HRP-conjugated anti-rabbit IgG antibody (NBP2-19301) was used to detect the primary antibody.



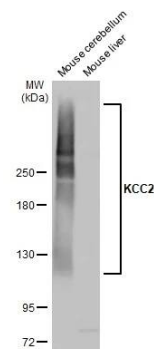
Western Blot: KCC2/SLC12A5 Antibody [NBP3-13161] - Rat tissue extract (50 ug) was separated by 5% SDS-PAGE, and the membrane was blotted with KCC2/SLC12A5 antibody (NBP3-13161) diluted at 1:5000. The HRP-conjugated anti-rabbit IgG antibody (NBP2-19301) was used to detect the primary antibody.



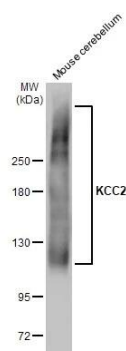
Western Blot: KCC2/SLC12A5 Antibody [NBP3-13161] - Various tissue extracts (50 ug) were separated by 5% SDS-PAGE, and the membrane was blotted with KCC2/SLC12A5 antibody (NBP3-13161) diluted at 1:500. The HRP-conjugated anti-rabbit IgG antibody was used to detect the primary antibody.



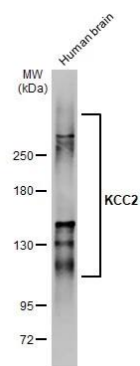
Western Blot: KCC2/SLC12A5 Antibody [NBP3-13161] - Various tissue extracts (50 ug) were separated by 5% SDS-PAGE, and the membrane was blotted with KCC2/SLC12A5 antibody (NBP3-13161) diluted at 1:5000. The HRP-conjugated anti-rabbit IgG antibody was used to detect the primary antibody.



Western Blot: KCC2/SLC12A5 Antibody [NBP3-13161] - Mouse tissue extract (50 ug) was separated by 5% SDS-PAGE, and the membrane was blotted with KCC2/SLC12A5 antibody (NBP3-13161) diluted at 1:5000. The HRP-conjugated anti-rabbit IgG antibody was used to detect the primary antibody.



Western Blot: KCC2/SLC12A5 Antibody [NBP3-13161] - Human brain (5 ug) was separated by 5% SDS-PAGE, and the membrane was blotted with KCC2/SLC12A5 antibody (NBP3-13161) diluted at 1:500. The HRP-conjugated anti-rabbit IgG antibody was used to detect the primary antibody.





### **Novus Biologicals USA**

10730 E. Briarwood Avenue  
Centennial, CO 80112  
USA  
Phone: 303.730.1950  
Toll Free: 1.888.506.6887  
Fax: 303.730.1966  
nb-customerservice@bio-techne.com

### **Bio-Techne Canada**

21 Canmotor Ave  
Toronto, ON M8Z 4E6  
Canada  
Phone: 905.827.6400  
Toll Free: 855.668.8722  
Fax: 905.827.6402  
canada.inquires@bio-techne.com

### **Bio-Techne Ltd**

19 Barton Lane  
Abingdon Science Park  
Abingdon, OX14 3NB, United Kingdom  
Phone: (44) (0) 1235 529449  
Free Phone: 0800 37 34 15  
Fax: (44) (0) 1235 533420  
info.EMEA@bio-techne.com

### **General Contact Information**

www.novusbio.com  
Technical Support: nb-technical@bio-techne.com  
Orders: nb-customerservice@bio-techne.com  
General: novus@novusbio.com

### **Products Related to NBP3-13161**

---

HAF008	Goat anti-Rabbit IgG Secondary Antibody [HRP]
NB7160	Goat anti-Rabbit IgG (H+L) Secondary Antibody [HRP]
NBP2-24891	Rabbit IgG Isotype Control
NBP2-49674PEP	KCC2/SLC12A5 Recombinant Protein Antigen

---

### **Limitations**

This product is for research use only and is not approved for use in humans or in clinical diagnosis. Primary Antibodies are guaranteed for 1 year from date of receipt.

For more information on our 100% guarantee, please visit [www.novusbio.com/guarantee](http://www.novusbio.com/guarantee)

Earn gift cards/discounts by submitting a review: [www.novusbio.com/reviews/submit/NBP3-13161](http://www.novusbio.com/reviews/submit/NBP3-13161)

Earn gift cards/discounts by submitting a publication using this product:  
[www.novusbio.com/publications](http://www.novusbio.com/publications)

