

Product Datasheet

Recombinant Human PSMA/FOLH1/NAALADase I His Protein NBP3-12866-10ug

Unit Size: 10 ug

Store at 4C short term. Aliquot and store at -20C long term. Avoid freeze-thaw cycles.

www.novusbio.com



technical@novusbio.com

Protocols, Publications, Related Products, Reviews, Research Tools and Images at:
www.novusbio.com/NBP3-12866

Updated 4/30/2026 v.20.1

Earn rewards for product
reviews and publications.

Submit a publication at www.novusbio.com/publications

Submit a review at www.novusbio.com/reviews/destination/NBP3-12866



NBP3-12866-10ug

Recombinant Human PSMA/FOLH1/NAALADase I His Protein

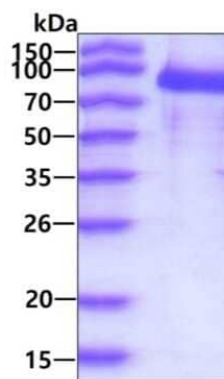
Product Information	
Unit Size	10 ug
Concentration	0.25 mg/ml
Storage	Store at 4C short term. Aliquot and store at -20C long term. Avoid freeze-thaw cycles.
Preservative	No Preservative
Purity	>90%, by SDS-PAGE
Buffer	PBS (pH 7.4), 20% glycerol
Target Molecular Weight	80.7 kDa

Product Description	
Description	<p>A recombinant protein with a His-tag and corresponding to the amino acids 44 - 750 of Human PSMA/FOLH1/NAALADase I</p> <p>Source: <i>Baculovirus</i></p> <p>Accession Number: NP_004467</p> <p>Amino Acid Sequence: KSSNEA TNITPKHNMK AFLDELKAEN IKKFLYNFTQ IPHLAGTEQN FQLAKQIQSQ WKEFGLDSVE LAHYDVLLSY PNKTHPNYIS IINEDGNEIF NTSLFEPPPP GYENVSDIVP PFSAFSPQGM PEGDLVYVNY ARTEDFFKLE RDMKINCSGK IVIARYGKVF RGNKVKNAQL AGAKGVILYS DPADYFAPGV KSYPDGWNLP GGGVQRGNIL NLNGAGDPLT PGYPANEYAY RRGIAEAVGL PSIPVHPIGY YDAQKLEKMG GGSAPPDSSW RGSLKVPYNV GPGFTGNFST QKVVMHIHST NEVTRIYNVI GTLRGAVEPD RYVILGGHRD SWVFGGIDPQ SGAAVVHEIV RSFGTLKKEG WRPRRTILFA SWDAEEFGLL GSTEWAEENS RLLQERGVAY INADSSIEN YTLRVDCTPL MYSLVHNLTK ELKSPDEGFE GKSLYESWTK KSPSPEFSGM PRISKLGSNG DFEVFFQRLG IASGRARYTK NWETNKFSGY PLYHSVYETY ELVEKFYDPM FKYHLTVAQV RGGMVFELAN SIVLPFDCRD YAVVLRKYAD KIYSISMKHP QEMKTYSVSF DSLFSAVKNF TEIASKFSER LQDFDKSNPI VLRMMNDQLM FLERAFIDPL GLPDRPFYRH VIYAPSSHNK YAGESFPGIY DALFDIESKV DPSKAWGEVK RQIYVAAFTV QAAAETLSEV A</p>
Gene ID	2346
Gene Symbol	FOLH1
Species	Human
Endotoxin Note	< 1 EU per 1ug of protein (determined by LAL method)

Product Application Details	
Applications	SDS-Page
Recommended Dilutions	SDS-Page

Images

SDS-Page: Recombinant Human PSMA/FOLH1/NAALADase I His Protein [NBP3-12866] - 3ug by SDS-PAGE under reducing condition and visualized by coomassie blue stain





Novus Biologicals USA

10730 E. Briarwood Avenue
Centennial, CO 80112
USA
Phone: 303.730.1950
Toll Free: 1.888.506.6887
Fax: 303.730.1966
nb-customerservice@bio-techne.com

Bio-Techne Canada

21 Canmotor Ave
Toronto, ON M8Z 4E6
Canada
Phone: 905.827.6400
Toll Free: 855.668.8722
Fax: 905.827.6402
canada.inquires@bio-techne.com

Bio-Techne Ltd

19 Barton Lane
Abingdon Science Park
Abingdon, OX14 3NB, United Kingdom
Phone: (44) (0) 1235 529449
Free Phone: 0800 37 34 15
Fax: (44) (0) 1235 533420
info.EMEA@bio-techne.com

General Contact Information

www.novusbio.com
Technical Support: nb-technical@bio-techne.com
Orders: nb-customerservice@bio-techne.com
General: novus@novusbio.com

Products Related to NBP3-12866-10ug

NBP2-88925PEP	PSMA/FOLH1/NAALADase I Recombinant Protein Antigen
AF231	EGFR Antibody [Unconjugated]
NBP1-45057	PSMA/FOLH1/NAALADase I Antibody (GCP-04) - BSA Free
NB110-74730	Opsin 1 (Medium Wave) Antibody

Limitations

This product is for research use only and is not approved for use in humans or in clinical diagnosis. Peptides and proteins are guaranteed for 1 year from date of receipt.

For more information on our 100% guarantee, please visit www.novusbio.com/guarantee

Earn gift cards/discounts by submitting a review: www.novusbio.com/reviews/submit/NBP3-12866

Earn gift cards/discounts by submitting a publication using this product:
www.novusbio.com/publications

