

Product Datasheet

SARS-CoV-2 Spike Antibody (5G12G11) - Gamma Variant, P.1, Brazil - BSA Free NBP3-12856

Unit Size: 0.1 mg

Store at 4C short term. Aliquot and store at -20C long term. Avoid freeze-thaw cycles.

www.novusbio.com



technical@novusbio.com

Protocols, Publications, Related Products, Reviews, Research Tools and Images at:
www.novusbio.com/NBP3-12856

Updated 9/9/2025 v.20.1

Earn rewards for product
reviews and publications.

Submit a publication at www.novusbio.com/publications

Submit a review at www.novusbio.com/reviews/destination/NBP3-12856



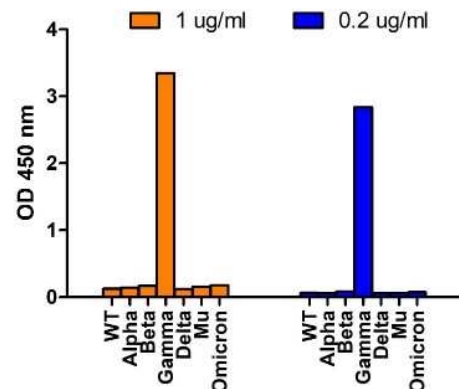
NBP3-12856

SARS-CoV-2 Spike Antibody (5G12G11) - Gamma Variant, P.1, Brazil - BSA Free

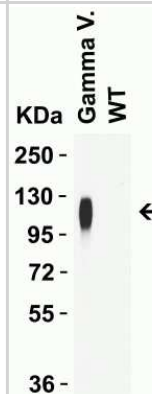
Product Information	
Unit Size	0.1 mg
Concentration	1 mg/ml
Storage	Store at 4C short term. Aliquot and store at -20C long term. Avoid freeze-thaw cycles.
Clonality	Monoclonal
Clone	5G12G11
Preservative	0.02% Sodium Azide
Isotype	IgG1
Purity	Affinity purified
Buffer	PBS
Product Description	
Description	Novus Biologicals Mouse SARS-CoV-2 Spike Antibody (5G12G11) - Gamma Variant, P.1, Brazil - BSA Free (NBP3-12856) is a monoclonal antibody validated for use in WB and ELISA. All Novus Biologicals antibodies are covered by our 100% guarantee.
Host	Mouse
Gene ID	43740568
Gene Symbol	S
Species	SARS-CoV-2
Specificity/Sensitivity	Antibody can only detect SARS-CoV-2 Gamma Variant (P.1) Spike S1 protein and does not cross-react with the spike protein of other variants.
Immunogen	Anti-SARS-CoV-2 Spike P26S (Gamma Variant) antibody was raised against a peptide corresponding to 11 amino acids near the amino terminus of SARS-CoV-2 Gamma variant (P.1) Spike protein. The immunogen is located within the first 50 amino acids of SARS-CoV-2 Gamma variant (P.1) Spike protein.
Product Application Details	
Applications	Western Blot, ELISA
Recommended Dilutions	Western Blot 1 ug/mL, ELISA
Application Notes	Antibody validated: Western Blot in human samples. Anti-SARS-CoV-2 Spike P26S (Gamma Variant) antibody specifically detects SARS-CoV-2 Gamma Variant (P.1) Spike S1 protein, but not SARS-CoV-2 WT and other variant Spike S1 protein by ELISA. All other applications and species not yet tested.

Images

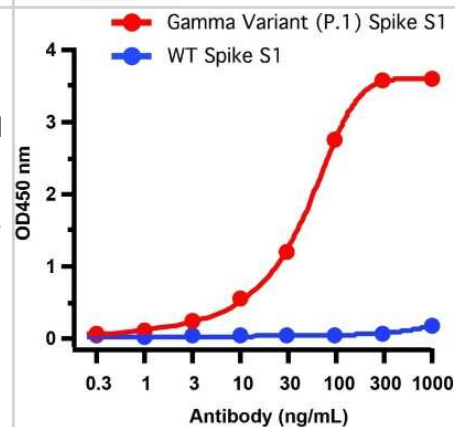
ELISA: SARS-CoV-2 Spike Antibody (5G12G11) - Gamma Variant, P.1, Brazil [NBP3-12856] - SARS-Cov-2 Spike P26S (Gamma Variant) Antibodies Specifically Detect Gamma Variant Spike S1 Protein in an ELISA. Coating Antigen: SARS-CoV-2 spike S1 proteins WT, alpha variant (B.1.1.7), beta variant (B.1.351), gamma variant (P.1), delta variant (B.1.617.2), mu variant (B.1.621), and omicron variant (B.1.1.529), 1 ug/mL, incubated at 4 C overnight. Detection Antibodies: SARS-CoV-2 Spike P26S (Gamma Variant) antibody, dilution: 200 and 1000 ng/mL, incubated at RT for 1 hr. Secondary Antibodies: Goat anti-mouse HRP at 1:5,000, incubated at RT for 1 hr.



Western Blot: SARS-CoV-2 Spike Antibody (5G12G11) - Gamma Variant, P.1, Brazil [NBP3-12856] - WB Validation of Gamma Variant Spike S1 Antibodies with SARS-CoV-2 Gamma Variant Spike S1 Protein. Loading: 50 ng of SARS-CoV-2 spike S1 proteins, including WT and Gamma variant (P.1). Detection Antibodies: Spike P26S (Gamma Variant) antibody, NBP3-12856, 1 ug/mL, incubated at RT for 1 hr. Secondary Antibodies: Goat anti-mouse HRP at 1:5,000, incubated at RT for 1 hr. SARS-CoV-2 Spike P26S (Gamma Variant) antibody specifically detects Gamma variant spike S1 protein, but not WT spike S1 protein.



ELISA: SARS-CoV-2 Spike Antibody (5G12G11) - Gamma Variant, P.1, Brazil [NBP3-12856] - ELISA Validation of Gamma Variant Spike S1 Antibodies with SARS-CoV-2 Gamma Variant Spike S1 Protein. Coating Antigen: SARS-CoV-2 spike S1 proteins WT and Gamma variant (P.1), 1 ug/mL, incubated at 4 C overnight. Detection Antibodies: SARS-CoV-2 Spike P26S (Gamma Variant) antibody, NBP3-12856, dilution: 0.3-1000 ng/mL, incubated at RT for 1 hr. Secondary Antibodies: Goat anti-mouse HRP at 1:5,000, incubated at RT for 1 hr. SARS-CoV-2 Spike P26S (Gamma Variant) antibody specifically detects Gamma variant spike S1 protein, but not WT spike S1 protein.



ELISA: SARS-CoV-2 Spike Antibody (5G12G11) - Gamma Variant, P.1, Brazil [NBP3-12856] - ELISA Validation of Gamma Variant Spike S1 Antibodies with Mutant and WT Peptide. Coating Antigen: SARS-CoV-2 spike S1 peptides: WT and Gamma variant (P.1), 1 ug/mL, incubated at 4 C overnight. Detection Antibodies: SARS-CoV-2 26P antibody, NBP3-12856, dilution: 0.3-1000 ng/mL, incubated at RT for 1 hr. Secondary Antibodies: Goat anti-mouse HRP at 1:5,000, incubated at RT for 1 hr. SARS-CoV-2 Spike P26S (Gamma Variant) antibody detects Gamma variant spike S1 peptide (26S), but not WT peptide (26P).





Novus Biologicals USA

10730 E. Briarwood Avenue
Centennial, CO 80112
USA
Phone: 303.730.1950
Toll Free: 1.888.506.6887
Fax: 303.730.1966
nb-customerservice@bio-techne.com

Bio-Techne Canada

21 Canmotor Ave
Toronto, ON M8Z 4E6
Canada
Phone: 905.827.6400
Toll Free: 855.668.8722
Fax: 905.827.6402
canada.inquires@bio-techne.com

Bio-Techne Ltd

19 Barton Lane
Abingdon Science Park
Abingdon, OX14 3NB, United Kingdom
Phone: (44) (0) 1235 529449
Free Phone: 0800 37 34 15
Fax: (44) (0) 1235 533420
info.EMEA@bio-techne.com

General Contact Information

www.novusbio.com
Technical Support: nb-technical@bio-techne.com
Orders: nb-customerservice@bio-techne.com
General: novus@novusbio.com

Products Related to NBP3-12856

NBP2-33376H	Blue Marker Antibody (6F4-F6) [HRP]
HAF007	Goat anti-Mouse IgG Secondary Antibody [HRP]
NB7539	Goat anti-Mouse IgG (H+L) Secondary Antibody [HRP]
NBP1-97005-0.5mg	Mouse IgG1 Isotype Control (MG1)

Limitations

This product is for research use only and is not approved for use in humans or in clinical diagnosis. Primary Antibodies are guaranteed for 1 year from date of receipt.

For more information on our 100% guarantee, please visit www.novusbio.com/guarantee

Earn gift cards/discounts by submitting a review: www.novusbio.com/reviews/submit/NBP3-12856

Earn gift cards/discounts by submitting a publication using this product:
www.novusbio.com/publications

