

Product Datasheet

PDE4B Antibody NBP3-12243

Unit Size: 100 ug

Store at 4C short term. Store at -20C long term. Avoid freeze-thaw cycles.

www.novusbio.com



technical@novusbio.com

Protocols, Publications, Related Products, Reviews, Research Tools and Images at:
www.novusbio.com/NBP3-12243

Updated 9/9/2025 v.20.1

Earn rewards for product
reviews and publications.

Submit a publication at www.novusbio.com/publications

Submit a review at www.novusbio.com/reviews/destination/NBP3-12243



NBP3-12243

PDE4B Antibody

Product Information	
Unit Size	100 ug
Concentration	Please see the vial label for concentration. If unlisted please contact technical services.
Storage	Store at 4C short term. Store at -20C long term. Avoid freeze-thaw cycles.
Clonality	Polyclonal
Preservative	0.02% Sodium Azide
Purity	Affinity purified
Buffer	Contains Tris, HCl/glycine buffer (pH 7.4-7.8), 30% glycerol, 0.5% BSA, along with cryo-protective agents, and HEPES (exact storage and stabilization buffer information is proprietary).

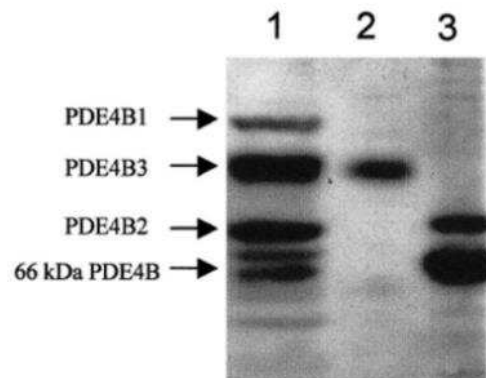
Product Description	
Description	Novus Biologicals Rabbit PDE4B Antibody (NBP3-12243) is a polyclonal antibody validated for use in IHC, WB, ELISA, ICC/IF and IP. All Novus Biologicals antibodies are covered by our 100% guarantee.
Host	Rabbit
Gene ID	5142
Gene Symbol	PDE4B
Species	Human, Mouse, Rat
Immunogen	Synthetic peptide common to all PDE4B subtypes taken near N-terminal

Product Application Details	
Applications	Western Blot, Immunohistochemistry-Paraffin, ELISA, Immunocytochemistry/Immunofluorescence, Immunohistochemistry, Immunoprecipitation
Recommended Dilutions	Western Blot 1:500-1:1000, ELISA 1:10000, Immunohistochemistry 1:250, Immunocytochemistry/ Immunofluorescence 1:250, Immunoprecipitation 1:350, Immunohistochemistry-Paraffin

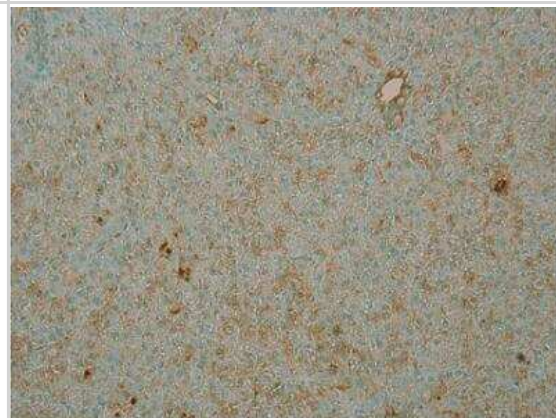


Images

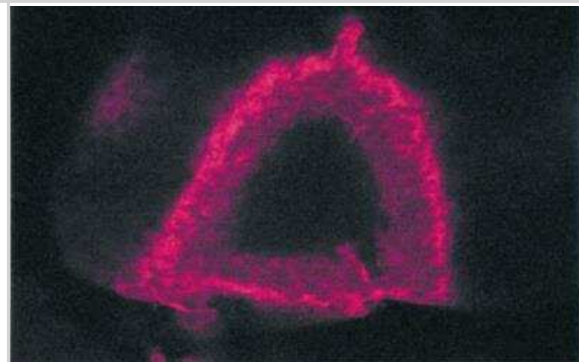
Western Blot: PDE4B Antibody [NBP3-12243] - wb of NBP3-12243.
1:500 antibody dilution in DiluObuffer.



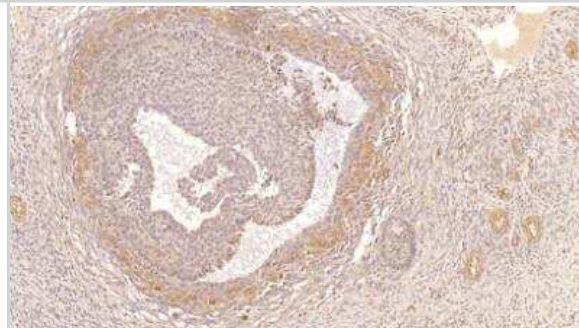
Immunohistochemistry-Paraffin: PDE4B Antibody [NBP3-12243] - IHC of NBP3-12243 and human neuroblastoma cells. 1:250 antibody dilution.



Immunohistochemistry-Paraffin: PDE4B Antibody [NBP3-12243] - Scanning laser microscopy of fixed frozen section of seminiferous tubule stained. Variants are localized in somatic cells, primarily sertoli cells.



Immunohistochemistry-Paraffin: PDE4B Antibody [NBP3-12243] - IHC of NBP3-12243 with human ovarian medulla tissue. 1:300 antibody dilution.





Novus Biologicals USA

10730 E. Briarwood Avenue
Centennial, CO 80112
USA
Phone: 303.730.1950
Toll Free: 1.888.506.6887
Fax: 303.730.1966
nb-customerservice@bio-techne.com

Bio-Techne Canada

21 Canmotor Ave
Toronto, ON M8Z 4E6
Canada
Phone: 905.827.6400
Toll Free: 855.668.8722
Fax: 905.827.6402
canada.inquires@bio-techne.com

Bio-Techne Ltd

19 Barton Lane
Abingdon Science Park
Abingdon, OX14 3NB, United Kingdom
Phone: (44) (0) 1235 529449
Free Phone: 0800 37 34 15
Fax: (44) (0) 1235 533420
info.EMEA@bio-techne.com

General Contact Information

www.novusbio.com
Technical Support: nb-technical@bio-techne.com
Orders: nb-customerservice@bio-techne.com
General: novus@novusbio.com

Products Related to NBP3-12243

NBP2-33376H	Blue Marker Antibody (6F4-F6) [HRP]
HAF008	Goat anti-Rabbit IgG Secondary Antibody [HRP]
NB7160	Goat anti-Rabbit IgG (H+L) Secondary Antibody [HRP]
NBP1-84057PEP	PDE4B Recombinant Protein Antigen

Limitations

This product is for research use only and is not approved for use in humans or in clinical diagnosis. Primary Antibodies are guaranteed for 1 year from date of receipt.

For more information on our 100% guarantee, please visit www.novusbio.com/guarantee

Earn gift cards/discounts by submitting a review: www.novusbio.com/reviews/submit/NBP3-12243

Earn gift cards/discounts by submitting a publication using this product:
www.novusbio.com/publications

