

# Product Datasheet

## Fc epsilon RI Antibody (IB10) [mFluor Violet 500 SE] NBP3-12050MFV500

Unit Size: 0.1 ml

Store at 4C in the dark.

[www.novusbio.com](http://www.novusbio.com)



[technical@novusbio.com](mailto:technical@novusbio.com)

Protocols, Publications, Related Products, Reviews, Research Tools and Images at:  
[www.novusbio.com/NBP3-12050MFV500](http://www.novusbio.com/NBP3-12050MFV500)

Updated 9/20/2023 v.20.1

Earn rewards for product  
reviews and publications.

Submit a publication at [www.novusbio.com/publications](http://www.novusbio.com/publications)

Submit a review at [www.novusbio.com/reviews/destination/NBP3-12050MFV500](http://www.novusbio.com/reviews/destination/NBP3-12050MFV500)



**NBP3-12050MFV500**

Fc epsilon RI Antibody (IB10) [mFluor Violet 500 SE]

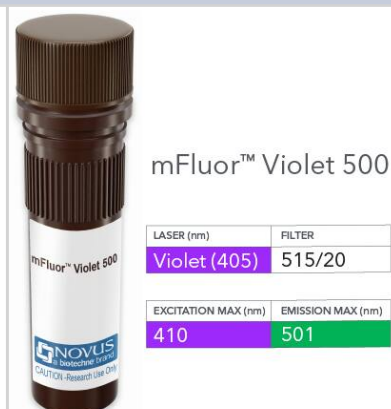
Product Information	
Unit Size	0.1 ml
Concentration	Please see the vial label for concentration. If unlisted please contact technical services.
Storage	Store at 4C in the dark.
Clonality	Monoclonal
Clone	IB10
Preservative	0.05% Sodium Azide
Isotype	IgG Kappa
Conjugate	mFluor Violet 500 SE
Purity	Protein A purified
Buffer	50mM Sodium Borate

Product Description	
Host	Rabbit
Gene ID	2205
Gene Symbol	FCER1A
Species	Human
Specificity/Sensitivity	This antibody binds to human Fc epsilon receptor and competes with IgE binding.
Immunogen	Recombinant human protein, N-terminus.

Product Application Details	
Applications	Flow Cytometry, Immunocytochemistry/ Immunofluorescence, Block/Neutralize
Recommended Dilutions	Flow Cytometry, Immunocytochemistry/ Immunofluorescence, Block/Neutralize
Application Notes	Optimal dilution of this antibody should be experimentally determined.

**Images**

Fc epsilon RI Antibody (IB10) [mFluor Violet 500 SE] - Vial of mFluor Violet 500 conjugated antibody. mFluor Violet 500 is optimally excited at 410 nm by the Violet laser (405 nm) and has an emission maximum of 501 nm.





### **Novus Biologicals USA**

10730 E. Briarwood Avenue  
Centennial, CO 80112  
USA  
Phone: 303.730.1950  
Toll Free: 1.888.506.6887  
Fax: 303.730.1966  
nb-customerservice@bio-techne.com

### **Bio-Techne Canada**

21 Canmotor Ave  
Toronto, ON M8Z 4E6  
Canada  
Phone: 905.827.6400  
Toll Free: 855.668.8722  
Fax: 905.827.6402  
canada.inquires@bio-techne.com

### **Bio-Techne Ltd**

19 Barton Lane  
Abingdon Science Park  
Abingdon, OX14 3NB, United Kingdom  
Phone: (44) (0) 1235 529449  
Free Phone: 0800 37 34 15  
Fax: (44) (0) 1235 533420  
info.EMEA@bio-techne.com

### **General Contact Information**

www.novusbio.com  
Technical Support: nb-technical@bio-techne.com  
Orders: nb-customerservice@bio-techne.com  
General: novus@novusbio.com

### **Products Related to NBP3-12050MFV500**

---

NBP2-23043	Recombinant Human Fc epsilon RI His Protein
210-TA-005	TNF-alpha [Unconjugated]
NBL1-10650	Fc epsilon RI Overexpression Lysate
6507-IL-010/CF	IL-4 [Unconjugated]

---

### **Limitations**

This product is for research use only and is not approved for use in humans or in clinical diagnosis. Primary Antibodies are guaranteed for 1 year from date of receipt.

For more information on our 100% guarantee, please visit [www.novusbio.com/guarantee](http://www.novusbio.com/guarantee)

Earn gift cards/discounts by submitting a review: [www.novusbio.com/reviews/submit/NBP3-12050MFV500](http://www.novusbio.com/reviews/submit/NBP3-12050MFV500)

Earn gift cards/discounts by submitting a publication using this product:  
[www.novusbio.com/publications](http://www.novusbio.com/publications)

