

Product Datasheet

CCRL2/CRAM-A/B Antibody (BZ5B8) - Chimeric - Azide and BSA Free NBP3-11970-0.2mg

Unit Size: 0.2 mg

Store at 4C for up to 3 months. For longer storage, aliquot and store at -20C.

www.novusbio.com



technical@novusbio.com

Protocols, Publications, Related Products, Reviews, Research Tools and Images at:
www.novusbio.com/NBP3-11970

Updated 9/9/2025 v.20.1

Earn rewards for product reviews and publications.

Submit a publication at www.novusbio.com/publications

Submit a review at www.novusbio.com/reviews/destination/NBP3-11970



NBP3-11970-0.2mg

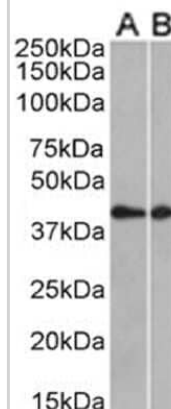
CCRL2/CRAM-A/B Antibody (BZ5B8) - Chimeric - Azide and BSA Free

Product Information	
Unit Size	0.2 mg
Concentration	1 mg/ml
Storage	Store at 4C for up to 3 months. For longer storage, aliquot and store at -20C.
Clonality	Monoclonal
Clone	BZ5B8
Preservative	0.02% Proclin 300
Isotype	IgG Kappa
Purity	Protein A purified
Buffer	PBS
Product Description	
Description	Novus Biologicals Rabbit CCRL2/CRAM-A/B Antibody (BZ5B8) - Chimeric - Azide and BSA Free (NBP3-11970) is a recombinant monoclonal antibody validated for use in IHC, WB, ELISA, Flow, ICC/IF and IP. All Novus Biologicals antibodies are covered by our 100% guarantee.
Host	Rabbit
Gene ID	9034
Gene Symbol	CCRL2
Species	Mouse
Specificity/Sensitivity	This antibody is specific for murine CCRL2/CRAM-A/B (formerly known as L-CCR), which is expressed on mast cells, activated macrophages, and endothelial cells. This receptor binds the leukocyte chemoattractant chemerin without triggering classical GPCR signaling, providing a specific mechanism for local enrichment of chemerin at inflammatory sites. CCRL2/CRAM-A/B presents active chemerin to leukocytes expressing the chemoattractant receptor CMKLR1/Chemr23. Chemerin can block anti-CCRL2/CRAM-A/B antibody binding.
Immunogen	This antibody was raised by immunising Wistar Furth rats with the mCCRL2/CRAM-A/B peptide/KLH conjugate. The immunizing amino-terminal mCCRL2/CRAM-A/B peptide with the sequence NH ₂ -MDNYTVAPDDEYDVLILDDYLDNSC-COOH, corresponding to residues 1-24 of mCCRL2/CRAM-A/B, with a nonnative carboxyl-terminal cysteine to facilitate conjugation to keyhole limpet hemocyanin (KLH).
Product Application Details	
Applications	Western Blot, ELISA, Flow Cytometry, Immunocytochemistry/ Immunofluorescence, Immunohistochemistry, Immunoprecipitation, Functional Assay
Recommended Dilutions	Western Blot, Flow Cytometry, ELISA, Immunohistochemistry, Immunocytochemistry/ Immunofluorescence, Immunoprecipitation, Functional Assay
Application Notes	This chimeric rabbit antibody was made using the variable domain sequences of the original Rat IgG2a format, for improved compatibility with existing reagents, assays and techniques.

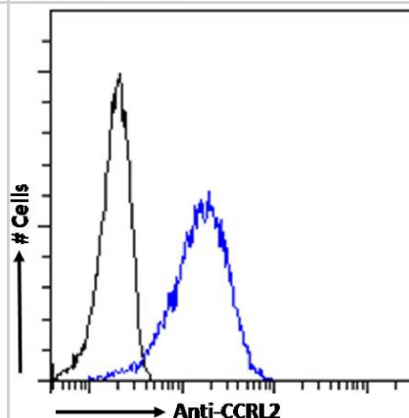


Images

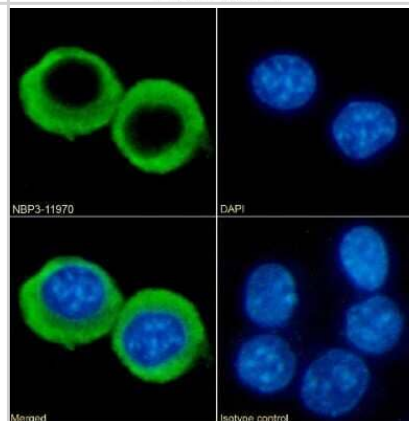
Western Blot: CCRL2/CRAM-A/B Antibody (BZ5B8) - Chimeric [NBP3-11970] - Mouse thymus (A) and mouse brain (B) tissue lysates (35ug protein in RIPA buffer) were resolved on a SDS PAGE gel and blots were probed with the chimeric rabbit version of CCRL2 (NBP3-11970) at 0.5 ug/ml, before detection using an anti-rabbit secondary antibody. A primary incubation of 1h was used and protein was detected by chemiluminescence.



Flow Cytometry: Rabbit Monoclonal CCRL2/CRAM-A/B Antibody (BZ5B8) [NBP3-11970] - Flow cytometry analysis of RAW264.7 cells.



Immunocytochemistry/Immunofluorescence: CCRL2/CRAM-A/B Antibody (BZ5B8) - Chimeric [NBP3-11970] - Immunofluorescence analysis of paraformaldehyde fixed RAW264.7 cells on Shi-fix(TM) coverslips stained with the chimeric rabbit IgG version of BZ5B8 (NBP3-11970) at 10 ug/ml for 1h followed by Alexa Fluor(R) 488 secondary antibody (2 ug/ml), showing membrane staining. The nuclear stain is DAPI (blue). Panels show from left-right, top-bottom NBP3-11970, DAPI, merged channels and an isotype control. The isotype control was an unknown specificity antibody followed by staining with Alexa Fluor(R) 488 secondary antibody.





Novus Biologicals USA

10730 E. Briarwood Avenue
Centennial, CO 80112
USA
Phone: 303.730.1950
Toll Free: 1.888.506.6887
Fax: 303.730.1966
nb-customerservice@bio-techne.com

Bio-Techne Canada

21 Canmotor Ave
Toronto, ON M8Z 4E6
Canada
Phone: 905.827.6400
Toll Free: 855.668.8722
Fax: 905.827.6402
canada.inquires@bio-techne.com

Bio-Techne Ltd

19 Barton Lane
Abingdon Science Park
Abingdon, OX14 3NB, United Kingdom
Phone: (44) (0) 1235 529449
Free Phone: 0800 37 34 15
Fax: (44) (0) 1235 533420
info.EMEA@bio-techne.com

General Contact Information

www.novusbio.com
Technical Support: nb-technical@bio-techne.com
Orders: nb-customerservice@bio-techne.com
General: novus@novusbio.com

Products Related to NBP3-11970-0.2mg

NBP2-33376H	Blue Marker Antibody (6F4-F6) [HRP]
HAF008	Goat anti-Rabbit IgG Secondary Antibody [HRP]
NB7160	Goat anti-Rabbit IgG (H+L) Secondary Antibody [HRP]
NBP1-85588PEP	CCRL2/CRAM-A/B Recombinant Protein Antigen

Limitations

This product is for research use only and is not approved for use in humans or in clinical diagnosis. Primary Antibodies are guaranteed for 1 year from date of receipt.

For more information on our 100% guarantee, please visit www.novusbio.com/guarantee

Earn gift cards/discounts by submitting a review: www.novusbio.com/reviews/submit/NBP3-11970

Earn gift cards/discounts by submitting a publication using this product:
www.novusbio.com/publications

